

Product datasheet for **RG219939**

EDA (NM_001399) Human Tagged ORF Clone

Product data:

Product Type:	Expression Plasmids
Product Name:	EDA (NM_001399) Human Tagged ORF Clone
Tag:	TurboGFP
Symbol:	EDA
Synonyms:	ECTD1; ED1; ED1-A1; ED1-A2; EDA-A1; EDA-A2; EDA1; EDA2; HED; HED1; ODT1; STHAGX1; TNLG7C; XHED; XLHED
Mammalian Cell Selection:	Neomycin
Vector:	pCMV6-AC-GFP (PS100010)
E. coli Selection:	Ampicillin (100 ug/mL)
ORF Nucleotide Sequence:	>RG219939 representing NM_001399 Red=Cloning site Blue=ORF Green=Tags(s)

TTTTGTAATACGACTCACTATAGGGCGGCCGGAATTCGTCGACTGGATCCGGTACCGAGGAGATCTGCC
GCC**GCGATCGCC**

ATGGGCTACCCGGAGGTGGAGCGCAGGGAACCTGCCTGCAGCAGCGCCGGGAGCGAGGGAGCCAGG
GCTGCGGGTGTGGCGGGGCCCTGCCGGGCGGGCAAGGGAACAGCTGCCTGCTTCTGGGTTTCTT
TGGCCTCTCGCTGGCCCTCCACCTGCTGACGTTGTGCTGCTACCTAGAGTTGCGCTCGGAGTTGCGGCGG
GAACGTGGAGCCGAGTCCCGCTTGGCGGCTCGGGCACCCCTGGCACCTCTGGCACCTAAGCAGCCTCG
GTGGCCTCGACCCTGACAGCCCCATCACCAGTCACCTTGGGCAGCCGTCACCTAAGCAGCAGCCATTGGA
ACCGGGAGAAGCCGCACTCCACTCTGACTCCCAGGACGGGCACCAGATGGCCCTATTGAATTTCTTCTTC
CCTGATGAAAAGCCATACTCTGAAGAAGAAAGTAGGCGTGTTCGCCGAATAAAAAGCAAAAGCAATG
AAGGAGCAGATGGCCAGTTAAAAACAAGAAAAGGGAAGAAAGCAGGACCTCCTGGACCAATGGCCC
TCCAGGACCCCAAGGACCTCCAGGACCCAGGGACCCCAAGGAATTCAGGGATTCTGGAATTCAGGA
ACAACCTGTTATGGGACCCTGGTCTCCAGGTCTCCTGGTCTCAAGGACCCCTGGCCTCCAGGGAC
CTTCTGGTGTGCTGATAAAGCTGGAACCTGAGAAAACAGCCAGCTGTGGTGCATCTACAGGGCCAAGG
GTCAGCAATCAAGTCAAGAATGATCTTTCAGGTGGAGTGTCAATGACTGGTCTCGCATCACTATGAAC
CCCAAGGTGTTAAGCTACATCCCGCAGCGGGGAGCTGGAGTACTGGTGGACGGCACCTACTTTCATCT
ATAGTCAGGTAGAAGTACTACATCAACTTCACTGACTTTGCCAGCTATGAGGTGGTGGTGGATGAGAA
GCCCTTCTCAGTGCACACGCAGCATCGAGACGGGCAAGACCACTACAACACTTGCTATACCGCAGGC
GTCTGCCTCCTCAAGGCCCGGCAGAAGATCGCCGTCAAGATGGTGCACGCTGACATCTCCATCAACATGA
GCAAGCACACCACGTTCTTTGGGCCATCAGGCTGGTGAAGCCCTGCATCC

ACGCGTACGCGGCCGCTCGAG - GFP Tag - GTTTAA



[View online »](#)

Protein Sequence: >RG219939 representing NM_001399
Red=Cloning site Green=Tags(s)

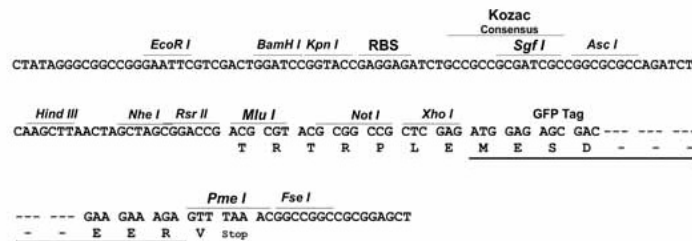
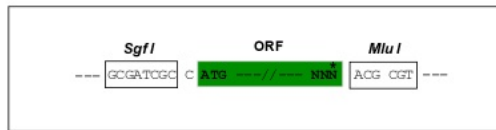
MGYPEVERRELLPAAAPRERGSQGC GCGGAPARAGEGNSCLLFLGFFGLSLALHLLTLCYLELRSELRR
 ERGAESRLGGSGTPTSGT LSSLGGLDPDSPITSHLGQPSPKQQPLEPGEAALHSDSQDGHQMALLNFFF
 PDEKPYSEEE SRRVRRNKRSKSNEGADGPVKNKKKGGKAGPPGPNPPGPPGPPGPPGPPGIPGIPGIPG
 TTVMPGPPGPPGPPGPPGPPGLQGPSGAADKAGTRENQPAVVHLQGGSAIQVKNDL SGGVLNDWSRITMN
 PKVFKLHPRSGELEVELVDGTYFIYSQVEVYYINFTDFASVEVVVDEKPF LQCTRSIETGKTNYNTCYTAG
 VCLLKARQKIAVKMVHADISINMSKHTTFFGAIRLGEAPAS

TRTRPLE - GFP Tag - V

Restriction Sites: SgfI-MluI

Cloning Scheme:

Cloning sites used for ORF Shutting:



ACCN: NM_001399

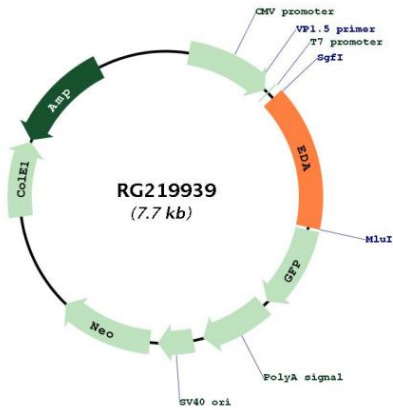
ORF Size: 1173 bp

OTI Disclaimer: Due to the inherent nature of this plasmid, standard methods to replicate additional amounts of DNA in E. coli are highly likely to result in mutations and/or rearrangements. Therefore, OriGene does not guarantee the capability to replicate this plasmid DNA. Additional amounts of DNA can be purchased from OriGene with batch-specific, full-sequence verification at a reduced cost. Please contact our customer care team at custsupport@origene.com or by calling 301.340.3188 option 3 for pricing and delivery.

The molecular sequence of this clone aligns with the gene accession number as a point of reference only. However, individual transcript sequences of the same gene can differ through naturally occurring variations (e.g. polymorphisms), each with its own valid existence. This clone is substantially in agreement with the reference, but a complete review of all prevailing variants is recommended prior to use. [More info](#)

OTI Annotation:	This clone was engineered to express the complete ORF with an expression tag. Expression varies depending on the nature of the gene.
Components:	The ORF clone is ion-exchange column purified and shipped in a 2D barcoded Matrix tube containing 10ug of transfection-ready, dried plasmid DNA (reconstitute with 100 ul of water).
Reconstitution Method:	<ol style="list-style-type: none">1. Centrifuge at 5,000xg for 5min.2. Carefully open the tube and add 100ul of sterile water to dissolve the DNA.3. Close the tube and incubate for 10 minutes at room temperature.4. Briefly vortex the tube and then do a quick spin (less than 5000xg) to concentrate the liquid at the bottom.5. Store the suspended plasmid at -20°C. The DNA is stable for at least one year from date of shipping when stored at -20°C.
RefSeq:	NM_001399.5
RefSeq Size:	5296 bp
RefSeq ORF:	1176 bp
Locus ID:	1896
UniProt ID:	Q92838
Cytogenetics:	Xq13.1
Protein Families:	Druggable Genome, Secreted Protein, Transmembrane
Protein Pathways:	Cytokine-cytokine receptor interaction
Gene Summary:	<p>The protein encoded by this gene is a type II membrane protein that can be cleaved by furin to produce a secreted form. The encoded protein, which belongs to the tumor necrosis factor family, acts as a homotrimer and may be involved in cell-cell signaling during the development of ectodermal organs. Defects in this gene are a cause of ectodermal dysplasia, anhidrotic, which is also known as X-linked hypohidrotic ectodermal dysplasia. Several transcript variants encoding many different isoforms have been found for this gene. [provided by RefSeq, Jul 2008]</p>

Product images:



Circular map for RG219939