

## Product datasheet for **RG219910**

### EIF4G1 (NM\_198242) Human Tagged ORF Clone

#### Product data:

Product Type:	Expression Plasmids
Product Name:	EIF4G1 (NM_198242) Human Tagged ORF Clone
Tag:	TurboGFP
Symbol:	EIF4G1
Synonyms:	EIF-4G1; EIF4F; EIF4G; EIF4GI; P220; PARK18
Mammalian Cell Selection:	Neomycin
Vector:	pCMV6-AC-GFP (PS100010)
E. coli Selection:	Ampicillin (100 ug/mL)
ORF Nucleotide Sequence:	>RG219910 representing NM_198242 Red=Cloning site Blue=ORF Green=Tags(s)

TTTTGTAATACGACTCACTATAGGGCGCCGGGAATTCGTCGACTGGATCCGGTACCGAGGAGATCTGCC  
GCC**CGATCGCC**

ATGAACGACCCAGATTGCTCCCAAGAGGGAGCGTAAGACGATCCGAATTCGAGATCCAAACCAAG  
GAGGAAAGGATATCACAGAGGAGATCATGTCTGGGGCCCGCACTGCCTCCACACCCACCCCTCCCGAGC  
GGGAGGCGGTCTGGAGCCTCAAGCTAATGGGGAGACGCCAGGTTGCTGTCATTGTCCGGCCAGATGAC  
CGGTCACAGGGAGCAATCATTGCTGACCGCCAGGGCTGCCTGGCCAGAGCATAGCCCTCAGAATCCC  
AGCCTTCTGTCGCTTCTCCGACCCCATCACCATCCCAGTCTTGAACCGGGTCTGAGCCTAATCTCGC  
AGTCTCTCTATTCTGGGGACACTATGACAACTATAACAATGTCTGTAGAAGAATCAACCCCATCTCC  
CGTGAAACTGGGGAGCCATATCGCTCTCTCCAGAACCCTCCTCTCGCCGAACCCATACTGGAAGTAG  
AAGTGACACTTAGCAAACCGGTTCCAGAATCTGAGTTTTCTTCCAGTCTCTCCAGGCTCCCACCCCTTT  
GGCATCTCACACAGTGGAATTCATGAGCCTAATGGCATGGTCCCCTCTGAAGATCTGGAACCAGAGGTG  
GAGTCAAGCCAGAGCTTGCTCTCCCCAGCTTGCCCTCCGAATCCCCTGTGCCATTGCTCAAAGT  
CCCAACCTGAGGAACTGCTCAACGGAGCCCTCGCCACCAGTGTGGACTTAAGCCAGTCAGTGAGCC  
AGAGGAGCAGGCCAAGGAGGTGACAGCATCAATGGCGCCCCCACCATCCCCTCTGCTACTCCAGTACG  
GCTCCTCAGTACTTCCCCAGCTCAGGAGGAGGAAATGGAAGAAGAAGAAGAAGAGGAAAGGAGAAG  
CAGGAGAAGCAGGAGAAGCTGAGAGTGAGAAAGGAGGAGGAACTGCTCCCCCAGAGAGTACCCCTAT  
TCCAGCCAACTTGTCTCAGAATTTGGAGGCAGCAGCAGCCACTCAAGTGGCAGTATCTGTGCCAAAGAGG  
AGACGGAAAATTAAGGAGCTAAATAAGAAGGAGGCTGTTGGAGACCTTCTGGATGCCTTCAAGGAGGCGA  
ACCCGGCAGTACCAGAGGTGGAAAATCAGCCTCCTGCAGGCAGCAATCCAGGCCAGAGTCTGAGGGCAG  
TGGTGTGCCCCACGCTCTGAGGAAGCAGATGAGACCTGGGACTCAAAGGAAGACAAAATTCACAATGCT  
GAGAACATCCAGCCCGGGAACAGAAGTATGAATATAAGTCAGATCAGTGAAGCCTCTAAACCTAGAGG  
AGAAAAACGTTACGACCGTGAGTTCCTGCTTGGTTTTTCAGTTCATCTTGGCAGTATGCAGAAGCCAGA  
GGGATTGCCACATATCAGTGACGTGGTGTGGACAAGGCCAATAAAACACCCTGCGGCCACTGGATCCC



[View online »](#)

ACTAGACTACAAGGCATAAATTGTGGCCAGACTTCACTCCATCCTTTGCCAACCTTGGCCGGACAACCC  
TTAGCACCCGTGGGCCCAAGGGTGGGCCAGGTGGGGAGCTGCCCCGTGGCCGGCTGGCCTGGGACC  
CCGGCGCTCTCAGCAGGGACCCGAAAAGAACCACGCAAGATCATTGCCACAGTGTAAATGACCGAAGAT  
ATAAACTGAACAAAGCAGAGAAAGCCTGGAAACCCAGCAGCAAGCGGACGGCGGCTGATAAGGATCGAG  
GGGAAGAAGATGCTGATGGCAGCAAAACCCAGGACCTATCCGCAGGGTGCCTCCATCCTGAATAAACT  
GACACCCAGATGTTCCAGCAGCTGATGAAGCAAGTGACGCAGCTGGCCATCGACACCGAGGAACGCCTC  
AAAGGGTCATTGACCTCATTTTTGAGAAGGCCATTTCCAGAGCCCACTCTCTGTGCCATGSCCAACA  
TGTGCCGCTGCCTCATGGCGCTGAAAGTGCCCACTACGAAAAGCCAACAGTGACTGTGAACCTCCGAAA  
GCTGTTGTTGAATCGATGTCAGAAGGAGTTTGAGAAAAGACAAAGATGATGATGAGTTTTTGAGAAGAAG  
CAAAAAGAGATGGATGAAGCTGTACGGCAGAGGAACGAGGACGCCTGAAGGAAGAGCTGGAAGAGGCTC  
GGGACATAGCCCGCGCGCTCTTTAGGGAATATCAAGTTTATTGGAGAGTTGTTCAAAGTGAAGATGTT  
AACAGAGGCAATAATGCATGACTGTGTGGTCAAAGTCTTAAGAACCATGATGAAGAGTCCCTTGAGTGC  
CTTTGTCGTCTGCTCACCACCTTGGCAAAGACCTGGACTTTGAAAAGCCAAGCCCGAATGGATCAGT  
ATTTCAACCAGATGGAATAATCATTAAAGAAAAGAAGACGTATCCCGCATCCGCTTTATGCTGCAGGA  
CGTGCTGGATCTCGAGGGAGCAATTGGGTGCCACGCCGAGGGGATCAGGGTCCCAAGACCATTGACCAG  
ATCCATAAGGAGGCTGAGATGGAAGAACATCGAGAGCACATCAAAGTGCAGCAGCTCATGGCCAAGGGCA  
GTGACAAGCGTCGGGGCGGTCTCCAGGCCCTCCCATCAGCCGTGGACTTCCCCTTGTGGATGATGGTGG  
CTGGAACACAGTCCCATCAGCAAAGGTAGCCGCCCATTTGACACCTCACGACTACCAAGATCACCAAG  
CCTGGCTCCATCGATTCTAACAACCAGCTCTTTGCACCTGGAGGGCGACTGAGCTGGGGCAAGGGCAGCA  
GCGGAGGCTCAGGAGCCAAGCCCTCAGACGCAGCATCAGAAGCTGCTCGCCAGCTACTAGTACTTTGAA  
TCGCTTTCAGCCCTTCAACAAGCGGTACCCACAGAAAGCACAGATAATAGACGTGTGGTGCAGAGGAGT  
AGCTTGAGCCGAGAACGAGGCGAGAAAGCTGGAGACCGAGGAGACCGCCTAGAGCCGAGTGAACGGGGAG  
GGGACCGTGGGGACCGCTTGTATCGTGCCGGACACCTGCTACCAAGCGGAGCTTACAGAAAGGAGTGA  
GGAGCGGAGTAGAGAACCGCCCTCCAGCCTGAGGGGCTGCGCAAGGCAGCTAGCCTCACGGAGGATCGG  
GACCGTGGGCGGATGCCGTGAAGCGAGAAGCTGCCCTACCCCAAGTGAAGCCCTGAAAGCGGCTCTCT  
CTGAGGAGGAGTTAGAGAAGAAATCCAAGGCTATCATTGAGGAATATCTCCATCTCAATGACATGAAAGA  
GGCAGTCCAGTGCCTGCAGGAGCTGGCCTCACCCTCCTTGCTCTTCATCTTTGTACGGCATGGTGTGAG  
TCTACGCTGGAGCGCAGTGCCATTGCTCGTGAGCATATGGGGCAGCTGCTGCACCAGCTGCTCTGTGCTG  
GGCATCTGTCTACTGCTCAGTACTACCAAGGTTGTATGAAATCTTGAATTGGCTGAGGACATGGAAT  
TGACATCCCCACGTGTGGCTTACCTAGCGGAAGTGGTAAACCCATTCTGCAGGAAGGTGGGGTGCC  
ATGGGGGAGCTGTTACGGGAGATTACAAGCCTCTGAGACCGTTGGGCAAAGCTGCTTCCCTGTTGCTGG  
AGATCCTGGGCCTCCTGTGCAAAAGCATGGGTCTAAAAAGGTGGGGACGCTGTGGCGAGAAGCCGGGCT  
TAGCTGGAAGGAATTTCTACCTGAAGGCCAGGACATTGGTGCATTGCTCGCTGAACAGAAGTGGAGTAT  
ACCCTGGGAGAGGAGTCGGAAGCCCTGGCCAGAGGGCACTCCCCTCCGAGGAGCTGAACAGGCAGCTGG  
AGAAGCTGCTGAAGGAGGGCAGCAGTAACCAGCGGGTGTTCGACTGGATAGAGGCCAACCTGAGTGAAGCA  
GCAGATAGTATCCAACACGTTAGTTCGAGCCCTCATGACGGCTGTCTGCTATTCTGCAATATTTTTGAG  
ACTCCCCTCCGAGTGGACGTTGCAGTGTGAAAGCGCGAGCGAAGCTGCTGCAGAAATACCTGTGTGACG  
AGCAGAAGGAGCTACAGGCGCTTACGCCCTCCAGGCCCTTGTAGTGACCTTGAACAGCCTCCCAACCT  
GCTGCGGATGTTCTTTGACGCACTGTATGACGAGGACGTGGTGAAGGAGGATGCCTTCTACAGTTGGGAG  
AGTAGCAAGGACCCCGCTGAGCAGCAGGGCAAGGGTGTGGCCCTTAAATCTGTACAGCCTTCTTCAAGT  
GGCTCCGTGAAGCAGAGGAGGAGTCTGACCACAAC

ACGCGTACGCGGCCGCTCGAG - GFP Tag - GTTTAA

Protein Sequence: >RG219910 representing NM\_198242  
 Red=Cloning site Green=Tags(s)

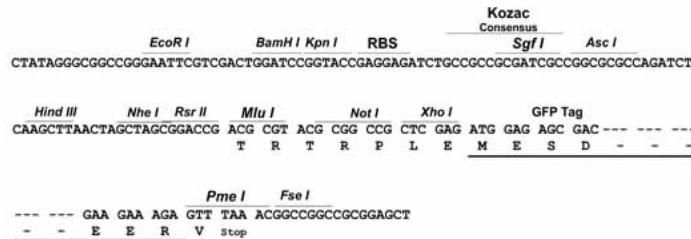
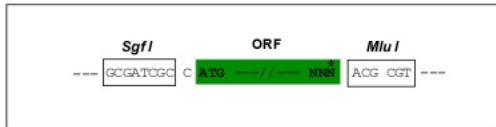
MNQPPQIAPKRERKTIRIRDPNQGGKDITEEIMSGARTASTPTTPPQTGGGLEPQANGETPQVAVIVRPDD  
 RSQGAIIADRPGLPGPEHSPSESQSPSSPTSPSPVLEPGSEPNLAVLSIPGDTMTTIQMSVEESTPIS  
 RETGEPYRLSPEPTPLAEPFILEVEVTL SKVPPESEFSSSPLQAPTPLASHTVEIHEPNGMVPSDELPEV  
 ESSPELAPPPACPSESPVPIAPTAQPEELLNGAPSPPAVDLSPVSEPEEQAKEVTASMAPPTIPSATPAT  
 APSATSPAQEEMEEEEEEEGEAGEAGEAESEKGGEELLPESTPIPANLSQNLEAAAATQVAVSVPKR  
 RRIKIKELNKKEAVGDLLDAFKEANPAVPEVENQPPAGSNPGPESESGVPPRPEEADETWDKEDKIHNA  
 ENIQPGEQKYEYKSDQWKPLNLEEKRYDREFLLGFQIFASMQKPEGLPHISDVVLDKANKTPLRPLDP  
 TRLQGINCPDFTPSFANLGRITLSTRGPPRGPGGELPRGPAGLGPRRSQGPRKEPRKIATVLMTE  
 IKLNKAEKAWKPKSKRTAADKDRGEEDAGSKTQDLFRRVRSILNKLTPQMFQQLMKQVTLAIDTEERL  
 KGVIDLIFEKAISEPNF SVAYANMCRCLMALKVPTTEKPTVTNFRKLLLNRCQKEFEKDKDDDEVFEKK  
 QKEMDEAATAEERGLKEELEEARDIARRRSLGNIKF IGELFKLKMLTEAIMHDCVVKLLKNHDEESLEC  
 LCRLTTIGKDLDFEKAPRMDQYFNQMEKIIKEKKTSSRIRFMLQDVLDLRGSNWVPRRGDQGGPKTIDQ  
 IHKEAEMEEHREHIKVQQLMAKGS DKRRGGPPGPI SRGLPLVDDGGWNTVPISKGRPIDTSRLTKITK  
 PGSIDSNQLFAPGGRLSWGKGS SGGSGAKPSDAASEARPATSTLNRF SALQQAVPTESTDNRVVQRS  
 SLSRERGEKAGDRDLERSERGGDRGDRDLDRARTPATKRSFSKEVEERSRERPSQPEGLRKAASLTEDR  
 DRGRDAVKREAAALPPVSPKAAALSEELEKSKAIIIEYLHLNDMKEAVQCVELASPLLFIFVRHGE  
 STLERSAIAREHMGQLLHQLLCAGHLSTAQYYQGLYEILELAEDMEIDIPHWLYLAELVTPILQEGGVP  
 MGELFREITKPLRPLGKAASLLLEILGLLCKSMGPKKVGTLWREAGL SWKEFLPEGQDIGAFVAEQKVEY  
 TLGEESEAPGQRALPSEELNRQLEKLLKEGSSNQRFVDWIEANLSEQQIVSNTLVRALMTAVCYSAIIFE  
 TPLRVDVAVLKARAKLLQKYLCEQKELQALYALQALVVTLEQPPNLLRMFFDALYDEDVVKEDAFYSWE  
 SSKDPAEQQKGVALKSVTAFFKWLREAEESDHN

TRTRPLE - GFP Tag - V

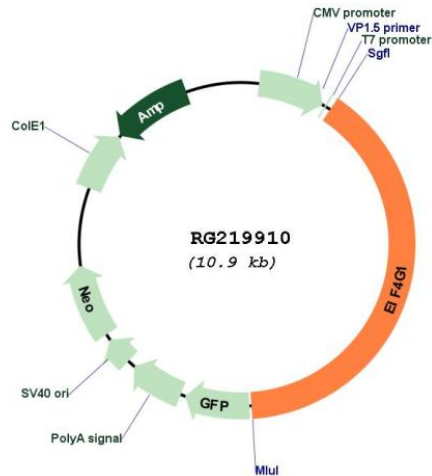
Restriction Sites: SgfI-MluI

Cloning Scheme:

Cloning sites used for ORF Shutting:



## Plasmid Map:



ACCN: NM\_198242

ORF Size: 4305 bp

OTI Disclaimer: The molecular sequence of this clone aligns with the gene accession number as a point of reference only. However, individual transcript sequences of the same gene can differ through naturally occurring variations (e.g. polymorphisms), each with its own valid existence. This clone is substantially in agreement with the reference, but a complete review of all prevailing variants is recommended prior to use. [More info](#)

OTI Annotation: This clone was engineered to express the complete ORF with an expression tag. Expression varies depending on the nature of the gene.

Components: The ORF clone is ion-exchange column purified and shipped in a 2D barcoded Matrix tube containing 10ug of transfection-ready, dried plasmid DNA (reconstitute with 100 ul of water).

**Reconstitution Method:**

1. Centrifuge at 5,000xg for 5min.
2. Carefully open the tube and add 100ul of sterile water to dissolve the DNA.
3. Close the tube and incubate for 10 minutes at room temperature.
4. Briefly vortex the tube and then do a quick spin (less than 5000xg) to concentrate the liquid at the bottom.
5. Store the suspended plasmid at -20°C. The DNA is stable for at least one year from date of shipping when stored at -20°C.

**RefSeq:** [NM\\_198242.3](#)

**RefSeq Size:** 5123 bp

**RefSeq ORF:** 4308 bp

**Locus ID:** 1981

**UniProt ID:** [Q04637](#)

**Cytogenetics:** 3q27.1

**Protein Pathways:** Viral myocarditis

**Gene Summary:** The protein encoded by this gene is a component of the multi-subunit protein complex EIF4F. This complex facilitates the recruitment of mRNA to the ribosome, which is a rate-limiting step during the initiation phase of protein synthesis. The recognition of the mRNA cap and the ATP-dependent unwinding of 5'-terminal secondary structure is catalyzed by factors in this complex. The subunit encoded by this gene is a large scaffolding protein that contains binding sites for other members of the EIF4F complex. A domain at its N-terminus can also interact with the poly(A)-binding protein, which may mediate the circularization of mRNA during translation. Alternative splicing results in multiple transcript variants, some of which are derived from alternative promoter usage. [provided by RefSeq, Aug 2010]