

Product datasheet for **RG219886**

CD30 (TNFRSF8) (NM_152942) Human Tagged ORF Clone

Product data:

Product Type: Expression Plasmids
Product Name: CD30 (TNFRSF8) (NM_152942) Human Tagged ORF Clone
Tag: TurboGFP
Symbol: TNFRSF8
Synonyms: CD30; D1S166E; Ki-1
Mammalian Cell Selection: Neomycin
Vector: pCMV6-AC-GFP (PS100010)
E. coli Selection: Ampicillin (100 ug/mL)
ORF Nucleotide Sequence: >RG219886 representing NM_152942
 Red=Cloning site Blue=ORF Green=Tags(s)

TTTTGTAATACGACTCACTATAGGGCGGCCGGAATTCGTCGACTGGATCCGGTACCGAGGAGATCTGCC
 GCC**CGATCGCC**

ATGAGCCAGCCACTGATGGAGACCTGCCACAGCGTGGGGCAGCCTACCTGGAGAGCCTGCCGCTGCAGG
 ATGCCAGCCCGGGCGGGGCCCTCGTCCCCAGGGACCTTCTGAGCCCGGTGTCCACGGAGCACAC
 CAATAACAAGATTGAGAAAATCTACATCATGAAGGCTGACACCGTGATCGTGGGACCGTGAAGGCTGAG
 CTGCCGGAGGGCCGGGCTGGCGGGCCAGCAGAGCCCGAGTTGGAGGAGGAGCTGGAGCGGACCATA
 CCCCCACTACCCGAGCAGGAGACAGAACCGCCTCTGGCAGCTGCAGCGATGTCATGCTCAGTGGA
 AGAGGAAGGAAAGAAGACCCCTTGCCACAGCTGCCTCTGAAAAG

ACGCGTACGCGGCCGCTCGAG - GFP Tag - GTTTAA

Protein Sequence: >RG219886 representing NM_152942
 Red=Cloning site Green=Tags(s)
 MSQPLMETCHSVGAAYLESLPLQDASPAGGPSSPRDLPEPRVSTEHTNKNIEKIYIMKADTVIVGTVKAE
 LPEGRGLAGPAEPELEEELEADHTPHYPEQETEPPLGSCSDVMLSVEEEGKEDPLPTAASGK

TRTRPLE - GFP Tag - V

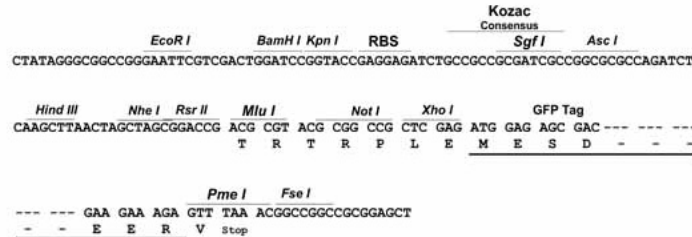
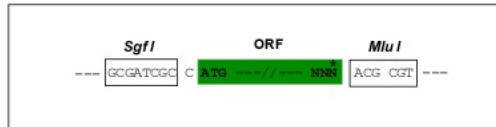
Restriction Sites: Sgfl-MluI



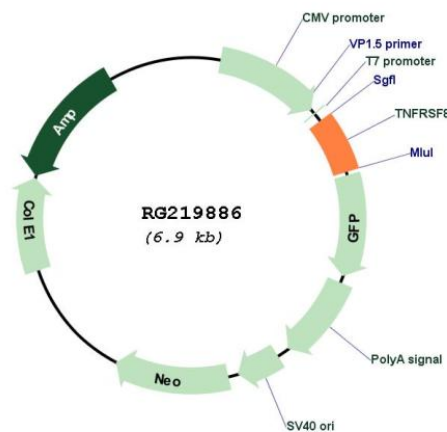
[View online »](#)

Cloning Scheme:

Cloning sites used for ORF Shutting:



Plasmid Map:



ACCN:

NM_152942

ORF Size:

396 bp

OTI Disclaimer:

The molecular sequence of this clone aligns with the gene accession number as a point of reference only. However, individual transcript sequences of the same gene can differ through naturally occurring variations (e.g. polymorphisms), each with its own valid existence. This clone is substantially in agreement with the reference, but a complete review of all prevailing variants is recommended prior to use. [More info](#)

OTI Annotation:	This clone was engineered to express the complete ORF with an expression tag. Expression varies depending on the nature of the gene.
Components:	The ORF clone is ion-exchange column purified and shipped in a 2D barcoded Matrix tube containing 10ug of transfection-ready, dried plasmid DNA (reconstitute with 100 ul of water).
Reconstitution Method:	<ol style="list-style-type: none">1. Centrifuge at 5,000xg for 5min.2. Carefully open the tube and add 100ul of sterile water to dissolve the DNA.3. Close the tube and incubate for 10 minutes at room temperature.4. Briefly vortex the tube and then do a quick spin (less than 5000xg) to concentrate the liquid at the bottom.5. Store the suspended plasmid at -20°C. The DNA is stable for at least one year from date of shipping when stored at -20°C.
RefSeq:	<u>NM_152942.2</u> , <u>NP_694421.1</u>
RefSeq Size:	2361 bp
RefSeq ORF:	398 bp
Locus ID:	943
Cytogenetics:	1p36.22
Protein Families:	Druggable Genome, ES Cell Differentiation/IPS, Stem cell - Pluripotency, Transmembrane
Protein Pathways:	Cytokine-cytokine receptor interaction
Gene Summary:	The protein encoded by this gene is a member of the TNF-receptor superfamily. This receptor is expressed by activated, but not by resting, T and B cells. TRAF2 and TRAF5 can interact with this receptor, and mediate the signal transduction that leads to the activation of NF-kappaB. This receptor is a positive regulator of apoptosis, and also has been shown to limit the proliferative potential of autoreactive CD8 effector T cells and protect the body against autoimmunity. Two alternatively spliced transcript variants of this gene encoding distinct isoforms have been reported. [provided by RefSeq, Jul 2008]