

Product datasheet for **RG219856**

ZNF512 (NM_032434) Human Tagged ORF Clone

Product data:

Product Type:	Expression Plasmids
Product Name:	ZNF512 (NM_032434) Human Tagged ORF Clone
Tag:	TurboGFP
Symbol:	ZNF512
Mammalian Cell Selection:	Neomycin
Vector:	pCMV6-AC-GFP (PS100010)
E. coli Selection:	Ampicillin (100 ug/mL)



[View online »](#)

ORF Nucleotide Sequence:

>RG219856 representing NM_032434
 Red=Cloning site Blue=ORF Green=Tags(s)

TTTTGTAATACGACTCACTATAGGGCGGCCGGGAATTCGTCGACTGGATCCGGTACCGAGGAGATCTGCC
 GCC**GCGATCGCC**

ATGCTTCCAGACTCGGTGCTGTACCCGCCACTTCGGGACCCACAACCTTTAAGCAGCAGAGGAGCAGCA
 GGATCGTGGGAGCTAAGAATAGCAGGACCCAGTGCCTCAAAGGATAATAGTTTCCAGTACACTATCCC
 TCATGATGACTCCTTAAGTGTTTCATCGTCTGCATCTTCGTGTGAACCAGTGAGTGATTTCCAGCATCT
 TTCCGAAAATCTACCTACTGGATGAAGATGAGAAGAATCAAGCCAGCTGCTACTTCTCATGTGCAAGGGT
 CAGGTGGAGTATCAGCCAAGGGGAAAAGGAAACCCAGGCAGGAAGAAGATGAAGACTATCGAGAATTTCC
 TCAGAAGAAGCATAAGCTTTATGGGAGGAAGCAACGGCCATAAACTCAGCCCAATCCCAATCCCAGGCC
 CGTCGTATTCGGAAGGAACCACCACTTTATGCAGCAGGCAGTTTGGAGGAGCAATGGTACTTAGAAATCG
 TTGATAAAGGCAGTGTCTCCTGCCCTACCTGCCAGGCAGTGGGGAGGAAGACCATAGAGGGTTTAAAGAA
 ACACATGGAAAACGCAAGCAGGAAATGTTTACTTGTGCATCATTGTGGGAAACAACCTTCGTTCACTGGCA
 GGGATGAAGTATCATGTCATGGCAAATCATAATAGTTTGGCCATTTTGAAGCCGGAGATGAAATAGATG
 AGCCAAGTGAGAGGGAAAGGCTCCGAACAGTCTAAAGAGACTGGGAAAGCTCAGGTGCATGCGTGAGAG
 TTGCTCCAGTAGCTTACCAGCATCATGGGATATCTCTACCATGTGAGAAAATGTGGCAAAGGGGCTGCA
 GAGCTGGAAAAGATGACCCTGAAATGTCACCACTGTGGAAAACCATATAGGTGCAAGGCTGGACTTGCAT
 ATCACCTGAGGTGAGAGCATGGGCCTATATCCTTCTTCCAGAGTCAGGACAGCCAGAGTGCTTAAAGGA
 GATGAACCTAGAGTCAAAGAGTGGGGCCGAGTTCAGAGACGTTCTGCCAAGATAGCTGTATACCACCTA
 CAGGAGCTGGCCTCTGCTGAACGGCAAGGAATGGCCCAAGAGGAAGGTGCTTCAGGACCTGGTACCTG
 ATGATCGAAAAGTTAAAAATACTCGTCCAGGGCTCCCTACCTTCAGCCAGGAAGTACTACATAAAATGGA
 GACAGATATCAAGAAATATCATCGTATTACAGTGTCCCTAACCCAGGGCTGTGAGGCTGTCTACAGCAGTGA
 TCTGGCCTTAAAGCTCACCTGGGCTCTGTACATTGGGAAACTTTGTGGCTGGAAAATACAAATGTCTTC
 TATGTGAGAAAAGATTTGTGTCAGAGAGTGGTGTCAAGTATCACATCAACTCCGTCCATGCTGAGGACTG
 GTTCGTTGTAAACCCAACAACAACCAAAAGCTTTGAAAAGCTGATGAAGATAAAGCAGCGGCAGCAAGAA
 GAAGAAAAGCGGAGGCAGCAGCAGGAGCAGAAGGTCTCTAAGAAGCGGCAGCAGCCTGGCATTGAGC
 TTCCCAGACAGAGCTGAGTCTTAGAGTAGGGAAGGATCAGAGGAGGAATAATGAGGAACTGGTAGTGTC
 AGCCTCCTGTAAGGAACCAGAGCAGGAGCCAGTCCAGCAGCAGTCCAGAAAAGTAAAGCCCCAAAGACT
 AATCATAAACGAGGAAGGAAA

ACGCGTACGCGGCCGCTCGAG - GFP Tag - GTTTAA

Protein Sequence:

>RG219856 representing NM_032434
 Red=Cloning site Green=Tags(s)

MSSRLGAVPATSGPTTFKQQRSTRIVGAKNSRTQCSIKDNSFQYTI PHDDSLSGSSASSCEPVSDFPAS
 FRKSTYWMKMRRIKPAATSHVEGSGGVSAKGRKPRQEEDDYREFPQKKHKL YGRKQRPKTQPNPKSQA
 RRIRKEPPVYAAAGSLEEQWYLEIVDKGSVSCPTCQAVGRKTIEGLKHHMENCKQEMFTCHHCGLRSLA
 GMKYHVMANHNSLPILKAGDEIDEPSEERLRTVLKRLGKLRMRESCSSSFTSIMGYL YHVRKCGKGA
 ELEKMTLKCHHCCKPYRSKAGLAYHLRSEHGPIISFFPESGQPECLKEMNLESKSGGRVQRRSAKIAVYHL
 QELASAEALAKEWPKRKVLQDLVPDDRKLKYTRPGLPTFSQEVLHKWKTDIKKYHRIQCPNQCEAVYSSV
 SGLKAHLGSCSTLGNFVAGKYKLLCQKEFVSESGVKYHINSVHAEDWFVFNPTTTKSFELMKIKQRQOE
 EEKRRQHRSSRLRRRQPGIELPETELSLRVGKDQRRNNEELVVSASCKEPEQEPVPAQFQVKVPPKT
 NHKRGRK

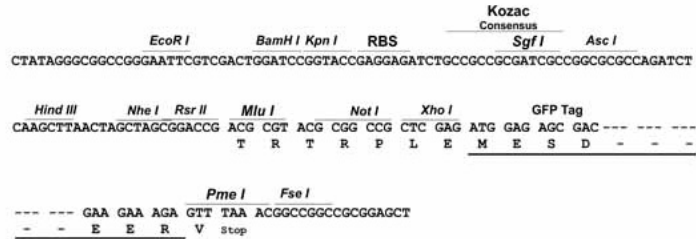
TRTRPLE - GFP Tag - V

Restriction Sites:

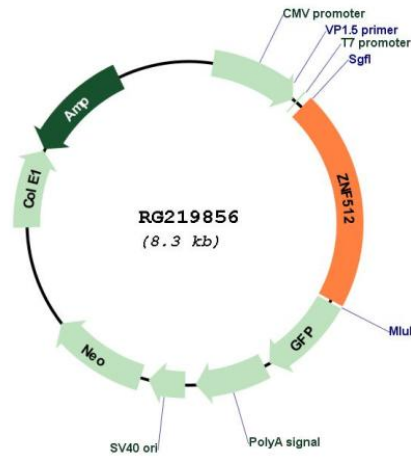
Sgfl-MluI

Cloning Scheme:

Cloning sites used for ORF Shutting:



Plasmid Map:



ACCN:

NM_032434

ORF Size:	1701 bp
OTI Disclaimer:	The molecular sequence of this clone aligns with the gene accession number as a point of reference only. However, individual transcript sequences of the same gene can differ through naturally occurring variations (e.g. polymorphisms), each with its own valid existence. This clone is substantially in agreement with the reference, but a complete review of all prevailing variants is recommended prior to use. More info
OTI Annotation:	This clone was engineered to express the complete ORF with an expression tag. Expression varies depending on the nature of the gene.
Components:	The ORF clone is ion-exchange column purified and shipped in a 2D barcoded Matrix tube containing 10ug of transfection-ready, dried plasmid DNA (reconstitute with 100 ul of water).
Reconstitution Method:	<ol style="list-style-type: none">1. Centrifuge at 5,000xg for 5min.2. Carefully open the tube and add 100ul of sterile water to dissolve the DNA.3. Close the tube and incubate for 10 minutes at room temperature.4. Briefly vortex the tube and then do a quick spin (less than 5000xg) to concentrate the liquid at the bottom.5. Store the suspended plasmid at -20°C. The DNA is stable for at least one year from date of shipping when stored at -20°C.
RefSeq:	NM_032434.4
RefSeq Size:	3460 bp
RefSeq ORF:	1704 bp
Locus ID:	84450
UniProt ID:	Q96ME7
Cytogenetics:	2p23.3
Domains:	zf-C2H2
Protein Families:	Transcription Factors
Gene Summary:	This gene encodes a protein containing four putative zinc finger motifs. Zinc finger motifs may bind to proteins or nucleic acids. Zinc finger-containing proteins are involved in a variety of processes, including regulation of transcription. Alternative splicing results in multiple transcript variants for this gene. [provided by RefSeq, Sep 2012]