

Product datasheet for **RG219841**

EIF4G1 (NM_198241) Human Tagged ORF Clone

Product data:

Product Type:	Expression Plasmids
Product Name:	EIF4G1 (NM_198241) Human Tagged ORF Clone
Tag:	TurboGFP
Symbol:	EIF4G1
Synonyms:	EIF-4G1; EIF4F; EIF4G; EIF4GI; P220; PARK18
Mammalian Cell Selection:	Neomycin
Vector:	pCMV6-AC-GFP (PS100010)
E. coli Selection:	Ampicillin (100 ug/mL)
ORF Nucleotide Sequence:	>RG219841 representing NM_198241 Red=Cloning site Blue=ORF Green=Tags(s)

TTTTGTAATACGACTCACTATAGGGCGGCCGGAATTCGTCGACTGGATCCGGTACCGAGGAGATCTGCC
GCC**CGATCGCC**

ATGAACAAAGCTCCACAGTCCACAGGCCCCACCCGCCCATCCCCGGACTCCACAGCCAGCGTTTC
CCCCGGGGCAGACAGCGCGGTGGTGTTTCAGTACGCCACAAGCGACACAAATGAACACGCCTTCTCAGCC
CCGCCAGCACTTCTACCTAGCCGGGCCAGCCCCGAGCAGTGCAGCCTCCCGAGTGCAGAGTGCAGCC
CCTGCCCGCCCTGGCCAGCTGCCATGTCTACCTGCTGGATCCCAAGTAATGATGATCCCTTCCCAGA
TCTCTACCCAGCCTCCAGGGGCTACTACATCCCTGGACAGGGGCTCCACATACGTTGTCCCGAC
ACAGCAGTACCCTGTGCAGCCAGGAGCCCGAGGCTTCTATCCAGGTGCAAGCCCTACAGAATTTGGGACC
TACGCTGGCGCTACTATCCAGCCCAAGGGGTGCAGCAGTTTCCCACTGGCGTGGCCCCGCCCCAGTTT
TGATGAACCAGCCACCCAGATTGCTCCCAAGAGGGAGCGTAAGACGATCCGAATTCGAGATCCAAACCA
AGGAGGAAAGGATATCACAGAGGAGATCATGTCTGGGGCCCGCACTGCCTCCACACCCACCCCTCCCCAG
ACGGGAGGCGGTCTGGAGCCTCAAGTAATGGGGAGACGCCCCAGGTTGCTGTCAATTGTCCGGCCAGATG
ACCGGTACAGGGAGCAATCATTGCTGACCGGCCAGGGCTGCCTGGCCAGAGCATAGCCCTTCAAGATC
CCAGCCTTCGTCGCTTCTCCGACCCATCACCATCCCCAGTCTTGAACCGGGTCTGAGCCTAATCTC
GCAGTCTCTCTATTCTGGGGACACTATGACAACATAACAATGTCTGTAGAAGATCAACCCCATCT
CCCGTAAACTGGGGAGCCATATCGCCTCTCTCCAGAACCCACTCTCTCGCCGAACCCATACTGGAAGT
AGAAGTGACACTTAGCAACCGGTTCCAGAATCTGAGTTTTCTTCCAGTCTCTCCAGGCTCCACCCCT
TTGGCATCTCACACAGTGGAAATTCATGAGCCTAATGGCATGGTCCCATCTGAAGATCTGGAACAGAGG
TGGAGTCAAGCCAGAGCTTGCTCCTCCCCAGCTTGCCCTCCGAATCCCTGTGCCATTGCTCCAAC
TGCCCAACCTGAGGAAGTCTCAACGGAGCCCTCGCCACCAGCTGTGGACTTAAGCCAGTCACTGAG
CCAGAGGAGCAGGCCAAGGAGGTGACAGCATCAATGGCGCCCCACCATCCCTCTGCTACTCCAGCTA
CGGCTCCTCAGCTACTCCCCAGCTCAGGAGGAGAAATGGAAGAAGAAGAAGAAGAGGAAGAAGGAGA
AGCAGGAGAAGCAGGAGAAGCTGAGAGTGAGAAAGGAGGAGGAACTGCTCCCCCAGAGAGTACCCT



[View online >](#)

ATTCCAGCCAACCTGTCTCAGAATTTGGAGGCAGCAGCAGCCACTCAAGTGGCAGTATCTGTGCCAAAGA
GGAGACGGAAAATTAAGGAGCTAAATAAGAAGGAGGCTGTTGGAGACCTTCTGGATGCCTTCAAGGAGGC
GAACCCGGCAGTACCAGAGGTGGAAAATCAGCCTCCTGCAGGCAGCAATCCAGGCCCAGAGTCTGAGGGC
AGTGGTGTGCCCCACGTCTGAGGAAGCAGATGAGACCTGGGACTCAAAGGAAGACAAAATTCACAATG
CTGAGAACATCCAGCCCAGGGAACAGAAGTATGAATAAAGTCAGATCAGTGAAGCCTCTAACCTAGA
GGAGAAAAACGTTACGACCGTGAGTTCCTGCTGGTTTTTCAGTTCATCTTTGCCAGTATGCAGAAGCCA
GAGGATTGCCACATATCAGTGACGTGGTCTGGACAAGGCCAATAAAACACCCTGCGGCCACTGGATC
CCTAGACTACAAGGCATAAATTTGGGCCAGACTTCACTCCATCCTTTGCCAACCTTGGCCGGACAAC
CCTTAGCACCCGTGGGCCCCCAAGGGTGGGCCAGGTGGGGAGCTGCCCGTGGGCCGGCTGGCCTGGGA
CCCCGGCGCTCTCAGCAGGGACCCGAAAAGAACCACGCAAGATCATTGCCACAGTGTTAATGACCGAAG
ATATAAACTGAACAAAGCAGAGAAAGCCTGGAACCCAGCAGCAAGCGGACGGCGGCTGATAAGGATCG
AGGGGAAGAAGATGCTGATGGCAGCAAAACCCAGGACCTATCCGAGGGTGGCTCCATCTGAATAAA
CTGACACCCAGATGTTCCAGCAGCTGATGAAGCAAGTGACGCAGCTGGCCATCGACACCGAGGAACGCC
TCAAAGGGGTATTGACCTATTTTTGAGAAGGCCATTTAGAGCCCACTTCTCTGTGGCTATGCCAA
CATGTGCCGCTGCCTCATGGCGTGAAAGTGCCCACTACGAAAAGCCAACAGTGACTGTGAACCTCCGA
AAGCTGTTGTTGAATCGATGTCAGAAGGAGTTTGAGAAAAGACAAAGATGATGATGAGTTTTTGAGAAGA
AGCAAAAAGAGATGGATGAAGCTGTACGGCAGAGGAACGAGGACGCCTGAAGGAAGAGCTGGAAGAGGC
TCGGGACATAGCCCGCGCGCTCTTTAGGGAATATCAAGTTTATTGGAGAGTTGTTCAAACCTGAAGATG
TTAACAGAGGCAATAATGCATGACTGTGTGGTCAAACCTGCTTAAGAACCATGATGAAGAGTCCCTTGAGT
GCCTTTGTGCTGCTCACCACCATGGCAAAGACCTGGACTTTGAAAAGCCAAGCCCCGAATGGATCA
GTATTTCAACCAGATGGAAAAATCATTAAAGAAAAGAAGACGTCATCCCGCATCCGCTTATGCTGCAG
GACGTGCTGGATCTGCGAGGGAGCAATTGGGTGCCACGCCGAGGGGATCAGGGTCCCAAGACCATGACC
AGATCCATAAGGAGGCTGAGATGGAAGAACATCGAGAGCACATCAAAGTGACAGCTCATGGCCAAAGGG
CAGTGACAAGCGTCGGGGCGGTCTCCAGGCCCTCCCATCAGCCGTGGACTTCCCCTTGTGGATGATGGT
GGCTGGAACACAGTTCATCAGCAAAGGTAGCCGCCCATTTGACACCTCAGACTCACCAGATACCA
AGCCTGGCTCCATCGATTCTAACCAACAGCTCTTTGCACCTGGAGGGCGACTGAGCTGGGCAAGGGCAG
CAGCGGAGGCTCAGGAGCCAAGCCCTCAGACGCAGCATCAGAAGCTGCTCGCCAGCTACTAGTACTTTG
AATCGCTTCTCAGCCCTCAACAAGCGGTACCCACAGAAAGCACAGATAATAGACGTGTGGTGCAGAGGA
GTAGCTTGAGCCGAGAACGAGGCGAGAAAGCTGGAGACCGAGGAGACCGCTAGAGCGGAGTGAACGGGG
AGGGGACCGTGGGACCGCTTGATCGTGCAGGACACCTGCTACCAAGCGGAGCTTCAAGCAAGGAAGT
GAGGAGCGGAGTAGAGAACGGCCCTCCAGCCTGAGGGGCTGCGCAAGGCAGCTAGCCTCACGGAGGATC
GGGACCGTGGGCGGATGCCGTGAAGCGAGAAGCTGCCCTACCCCAAGTGAAGCCCTGAAGGGCGCTCT
CTCTGAGGAGGAGTTAGAGAAGAAATCCAAGGCTATCATTGAGGAATATCTCCATCTCAATGACATGAAA
GAGGCAGTCCAGTGCAGGAGCTGGCCTCACCTCCTTGCTCTTCTGACGGCATGGTGTGCG
AGTCTACGCTGGAGCGCAGTGCCATTGCTGCTGAGCATAATGGGGCAGCTGCTGCACCAGCTGCTCTGTG
TGGGATCTGTCTACTGCTCAGTACTACCAAGGGTTGTATGAAATCTTGGAAATGGCTGAGGACATGGAA
ATTGACATCCCCACGTGTGGCTCTACCTAGCGGAAGTGGTAACCCCATTTGCAGGAAGGTGGGGTGC
CCATGGGGGAGCTGTTCAAGGAGATTACAAAGCCTCTGAGACCGTTGGGCAAAGCTGTTCCCTGTTGCT
GGAGTCTGGGCTCCTGTGCAAAAGCATGGTCTCTAAAAGGTGGGGACGCTGTGGCGAGAAGCCGGG
CTTAGCTGGAAGGAATTTCTACCTGAAGGCCAGGACATTGGTGCATTCGTCGCTGAACAGAAGGTGGAGT
ATACCCTGGGAGAGGAGTCGGAAGCCCTGGCCAGAGGGCACTCCCTCCGAGGAGCTGAACAGGCAGCT
GGAGAAGCTGCTGAAGGAGGGCAGCAGTAACCAGCGGGTGTTCGACTGGATAGAGGCCAACCTGAGTGAG
CAGCAGATAGTATCCAACACGTTAGTTCGAGCCCTCATGACGGCTGTCTGCTATTCTGCAATATTTTTG
AGACTCCCCTCCGAGTGGACGTTGACGTGCTGAAAGCGCGAGCGAAGCTGCTGCAGAAATACCTGTGTGA
CGAGCAGAAGGAGCTACAGGCGCTCTACGCCCTCAGGCCCTTGTAGTACCTTAGAACAGCCTCCCAAC
CTGCTGCGGATGTTCTTTGACGCACTGTATGACGAGGACGTGGTGAAGGAGGATGCCTTCTACAGTTGGG
AGAGTAGCAAGGACCCCGCTGAGCAGCAGGGCAAGGGTGTGGCCCTTAAATCTGTACAGCCTTCTTCAA
GTGGCTCCGTGAAGCAGAGGAGGAGTCTGACCACAAC

ACGCGTACGCGGCCGCTCGAG - GFP Tag - GTTTAA

Protein Sequence: >RG219841 representing NM_198241
 Red=Cloning site Green=Tags(s)

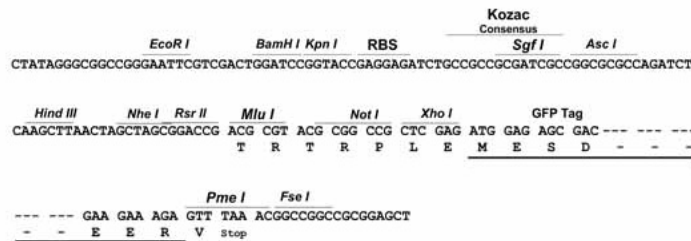
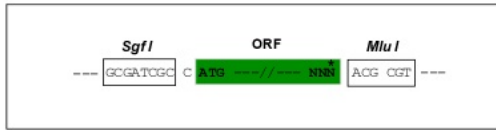
MNKAPQSTGPPPAPSPGLPQPAFPPGQTAPVVFSTPQATQMNTPSQPRQHFYPSRAQPPSSAASRVQSAA
 PARPGPAAHVYPAGSQVMMIPSQISYPASQGAYYIPGQGRSTYVVPTQQYVPVQPGAPGFYPGASPTTEFGT
 YAGAYYPAQGVQQFPTGVAPAPVLMNQPPQIAPKRERKTIIRIDPNQGGKDITEEIMSGARTASTPTPPQ
 TGGGLEPQANGETPQVAVIVRPDDRSQGAIIADRPGLPGPEHSPSESQPSSTPSPSPVLEPGSEPNL
 AVLSIPGDTMTTIQMSVEESTPISRETGEPYRLSPEPTPLAEPILEVEVTL SKVPVESEFSSSPLQAPTP
 LASHTVEIHEPNGMVPSEDLPEVESSPELAPPACPSESPVPIAPTAQPEELLNGAPSPPAVDLSPVSE
 PEEQAKEVTASMAPPTIPSATPATAPSATSPAQEEEMEEEEEEGEAGEAGEAESEKGGEE LLPPESTP
 IPANLSQNLEAAAATQVAVSVPKRRRIKELNKKEAVGDLLDAFKEANPAVPEVENQPPAGSNPGPESEG
 SGVPPRPEEADETWDSKEDIHNAENIQPGEQKYEYKSDQWKPLNLEEKRYDREFFLGFQFIFASMQKP
 EGLPHISDVVLDKANKTPLRPLDPTLQGINCGPDFTPSFANLGRITLSTRGPPRGGPGGELPRGPAGLG
 PRRSQQPRKEPRKIIATVLMTEEDIKLNKAEKAWKPSSKRTAADKDRGEEDADGSKTQDLFRRVRSILNK
 LTPQMFMQLMKQVTLAIDTEERLKGVIDLIFEKAISEPNF SVAYANMCRCLMALKVPTTEKPTVTVNF
 R KLLLNRCKQKFEKDKDDDEVFEKKQKEMDEAATAEERGLKEELEEARDIARRRSLGNIKF IGELFKLKM
 L TEAIMHDCVVKLLKNHDEESLECLCRLLTITIGKDLDFEKAKPRMDQYFNQMEKIIKEKKTSSRIRFMLQ
 DVLDLRGSNWVPRRGDQGPKTIDQIHKEAEMEEHREHIKVVQLMAKGS DKRRGGPPGISRGLPLVDDG
 GWNTVPI SKGSRPIDTSRLTKITKPGSIDSNQLFAPGGRLSWGKSSGGSGAKPSDAASEAARPATSTL
 NRF SALQQAVPTESDNRVVQRSSLRERGEKAGDRGDLERSERGGDRGDRDRARTPATKRSFSKEV
 EERSRERPSQPEGLRKAASLTEDRDRGRDAVKREAAALPPVSPLKAALSEELEKSKAIIIEEYHLNDMK
 EAVQCVQELASPSLLFIFVRHGVESTLERSAIAREHMGLLHQLLCAGHLSTAQYYQGLYEILELAEDME
 IDIPHVWLYLAELVTPILQEGGVPMGLFREITKPLRPLGKAASLLLEILGLLCKSMGPKKVTGLWREAG
 LSWKEFLPEGQDIGAFVAEQKVEYTLGEESEAPGQRALPSEELNRQLEKLLKEGSSNQRFVDWIEANLSE
 QQIYSNTLVRALMTAVCYSAIIFETPLRVDVAVLKARAKLLQKYLCEQKELQALYALQALVVTLEQPPN
 LLRMFFDALYDEDEVVKEDAFYSWESSKDPAEQQGKGVALKSVTAFFKWLREAEESDHN

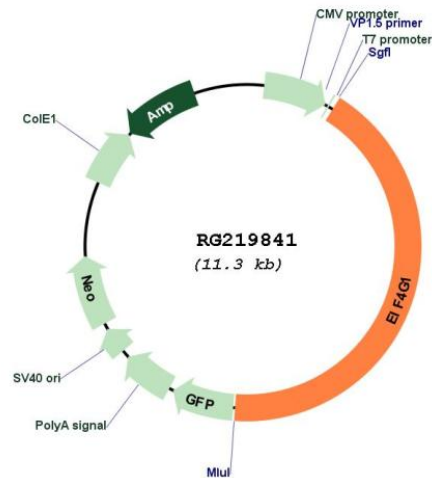
TRTRPLE - GFP Tag - V

Restriction Sites: SgfI-MluI

Cloning Scheme:

Cloning sites used for ORF Shutting:



Plasmid Map:


ACCN: NM_198241

ORF Size: 4797 bp

OTI Disclaimer: The molecular sequence of this clone aligns with the gene accession number as a point of reference only. However, individual transcript sequences of the same gene can differ through naturally occurring variations (e.g. polymorphisms), each with its own valid existence. This clone is substantially in agreement with the reference, but a complete review of all prevailing variants is recommended prior to use. [More info](#)

OTI Annotation: This clone was engineered to express the complete ORF with an expression tag. Expression varies depending on the nature of the gene.

Components: The ORF clone is ion-exchange column purified and shipped in a 2D barcoded Matrix tube containing 10ug of transfection-ready, dried plasmid DNA (reconstitute with 100 ul of water).

Reconstitution Method:

1. Centrifuge at 5,000xg for 5min.
2. Carefully open the tube and add 100ul of sterile water to dissolve the DNA.
3. Close the tube and incubate for 10 minutes at room temperature.
4. Briefly vortex the tube and then do a quick spin (less than 5000xg) to concentrate the liquid at the bottom.
5. Store the suspended plasmid at -20°C. The DNA is stable for at least one year from date of shipping when stored at -20°C.

RefSeq: [NM_198241.2](#), [NP_937884.1](#)

RefSeq Size: 5463 bp

RefSeq ORF: 4800 bp

Locus ID: 1981

UniProt ID: [Q04637](#)

Cytogenetics: 3q27.1

Protein Pathways: Viral myocarditis

Gene Summary: The protein encoded by this gene is a component of the multi-subunit protein complex EIF4F. This complex facilitates the recruitment of mRNA to the ribosome, which is a rate-limiting step during the initiation phase of protein synthesis. The recognition of the mRNA cap and the ATP-dependent unwinding of 5'-terminal secondary structure is catalyzed by factors in this complex. The subunit encoded by this gene is a large scaffolding protein that contains binding sites for other members of the EIF4F complex. A domain at its N-terminus can also interact with the poly(A)-binding protein, which may mediate the circularization of mRNA during translation. Alternative splicing results in multiple transcript variants, some of which are derived from alternative promoter usage. [provided by RefSeq, Aug 2010]