

Product datasheet for **RG219830**

CMTM1 (NM_181283) Human Tagged ORF Clone

Product data:

Product Type: Expression Plasmids
Product Name: CMTM1 (NM_181283) Human Tagged ORF Clone
Tag: TurboGFP
Symbol: CMTM1
Synonyms: CKLFH; CKLFH1; CKLFSF1
Mammalian Cell Selection: Neomycin
Vector: pCMV6-AC-GFP (PS100010)
E. coli Selection: Ampicillin (100 ug/mL)
ORF Nucleotide Sequence: >RG219830 representing NM_181283
Red=Cloning site Blue=ORF Green=Tags(s)

TTTTGTAATACGACTCACTATAGGGCGGCCGGAATTCGTCGACTGGATCCGGTACCGAGGAGATCTGCC
GCC**CGATCGCC**

ATGGATCCTGAACACGCCAAACCTGAGTCATCCGAGGCACCTTCAGGGAACCTGAAACAACCGGAGACTG
CCGCAGCCCTGGATCTTACCAACAGTATCATTACAGCTGTGTTCCCTTCAGTAGTTGCCATCTTGCCAT
GCAAGAAAAGAAAAGAAGGCATTTACTCTATGTCGGGGGGCGG

ACGCGTACGCGGCCGCTCGAG - GFP Tag - GTTTAA

Protein Sequence: >RG219830 representing NM_181283
Red=Cloning site Green=Tags(s)

MDPEHAKPESEAPSGNLKQPETAALDLTNSIITAVFLSVVAIAMQEKKRRHLLYVGGR

TRTRPLE - GFP Tag - V

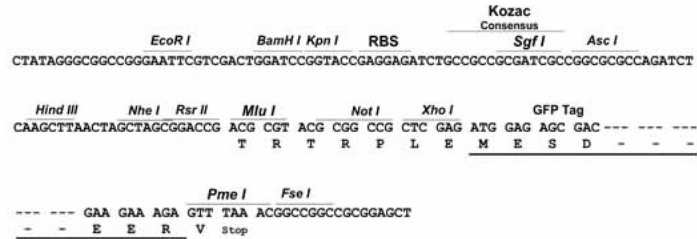
Restriction Sites: Sgfl-MluI



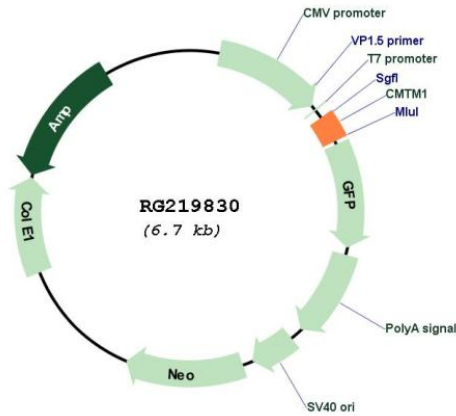
[View online »](#)

Cloning Scheme:

Cloning sites used for ORF Shutting:



Plasmid Map:



ACCN: NM_181283

ORF Size: 183 bp

OTI Disclaimer:	The molecular sequence of this clone aligns with the gene accession number as a point of reference only. However, individual transcript sequences of the same gene can differ through naturally occurring variations (e.g. polymorphisms), each with its own valid existence. This clone is substantially in agreement with the reference, but a complete review of all prevailing variants is recommended prior to use. More info
OTI Annotation:	This clone was engineered to express the complete ORF with an expression tag. Expression varies depending on the nature of the gene.
Components:	The ORF clone is ion-exchange column purified and shipped in a 2D barcoded Matrix tube containing 10ug of transfection-ready, dried plasmid DNA (reconstitute with 100 ul of water).
Reconstitution Method:	<ol style="list-style-type: none">1. Centrifuge at 5,000xg for 5min.2. Carefully open the tube and add 100ul of sterile water to dissolve the DNA.3. Close the tube and incubate for 10 minutes at room temperature.4. Briefly vortex the tube and then do a quick spin (less than 5000xg) to concentrate the liquid at the bottom.5. Store the suspended plasmid at -20°C. The DNA is stable for at least one year from date of shipping when stored at -20°C.
RefSeq:	NM_181283.3
RefSeq Size:	612 bp
RefSeq ORF:	186 bp
Locus ID:	113540
UniProt ID:	Q8IZ96
Cytogenetics:	16q21
Protein Families:	Transmembrane
Gene Summary:	This gene belongs to the chemokine-like factor gene superfamily, a novel family that is similar to the chemokine and the transmembrane 4 superfamilies of signaling molecules. The protein encoded by this gene may play an important role in testicular development. Alternatively spliced transcript variants encoding different isoforms have been identified. Naturally occurring read-through transcription occurs between this locus and the neighboring locus CKLF (chemokine-like factor).[provided by RefSeq, Feb 2011]