

Product datasheet for **RG219820**

C20orf30 (TMEM230) (NM_001009923) Human Tagged ORF Clone

Product data:

Product Type: Expression Plasmids
Product Name: C20orf30 (TMEM230) (NM_001009923) Human Tagged ORF Clone
Tag: TurboGFP
Symbol: C20orf30
Synonyms: C20orf30; dj1116H23.2.1; HSPC274
Mammalian Cell Selection: Neomycin
Vector: pCMV6-AC-GFP (PS100010)
E. coli Selection: Ampicillin (100 ug/mL)
ORF Nucleotide Sequence: >RG219820 representing NM_001009923
Red=Cloning site Blue=ORF Green=Tags(s)

TTTTGTAATACGACTCACTATAGGGCGCCGGGAATTCGTCGACTGGATCCGGTACCGAGGAGATCTGCC
GCC**CGATCGCC**

ATGCAACCTTGGGCGCTGCCAACCGTGGGCGAGCTCTGGGTGTGCGGGCGGCCTGGCGGGCGCTCCGAT
GGAGTCTAGTTCTGTGCGCCAGGCTGGAGCCAGTGGTGTGATCTCAGCTCACTGCAATCTCCACCTCT
GGCTTCAAGCGATTCTTCTGCTTCAAGCTCCCGACTGTGTGAGCGTGTATGATGCCGTCCTACCAAC
CTGGCTACTGGAATCCCCAGTAGTAAAGTAAATATTCAAGGCTCTCCAGCACAGACGATGGCTACATTG
ACCTTCAGTTTAAGAAAACCCCTCCTAAGATCCCTTATAAGGCCATCGCACTTGCCACTGTGCTGTTTTT
GATTGGCGCCTTTCTATTATTATAGGCTCCCTCTGCTGTGAGGCTACATCAGCAAAGGGGGGAGAG
CGGGCCGTTCCAGTGCTGATCATTGGCATTCTGGTGTCTACCCGATTTTACCACCTGCGCATCGCTT
ACTATGCATCAAAGGCTACCGTGGTACTCCTATGATGACATCCAGACTTTGATGAC

ACGCGTACGCGGCCGCTCGAG - GFP Tag - GTTTAA

Protein Sequence: >RG219820 representing NM_001009923
Red=Cloning site Green=Tags(s)

MQPWALPTVGELWVCGRPGAALRWLVLSRPLEPSGVISAHCNLHLLASSDSSASASRLCQRMMPSTRN
LATGIPSSKVYSRLSSTDDGYIDLQFKTPPKIPYKAIALATVLFILGAFLLIIIGSLLLSGYISKGGAD
RAVPVLIIGILVFLPGFYHLRIAYYASKGYRGYSYDDIPDFDD

TRTRPLE - GFP Tag - V

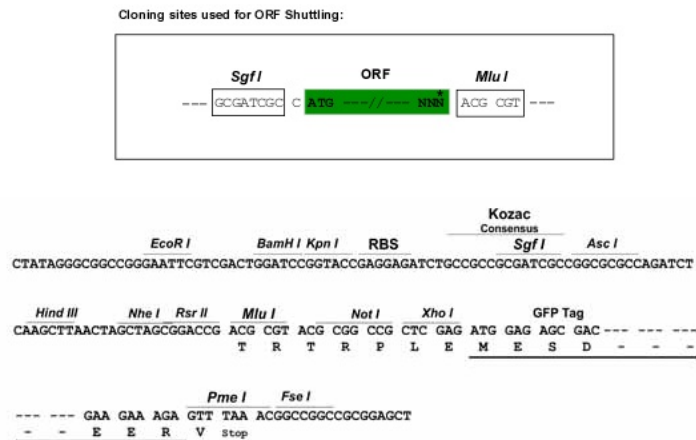
Chromatograms: https://cdn.origene.com/chromatograms/ja1611_e01.zip



[View online >](#)

Restriction Sites: SgfI-MluI

Cloning Scheme:



ACCN: NM_001009923

ORF Size: 549 bp

OTI Disclaimer: The molecular sequence of this clone aligns with the gene accession number as a point of reference only. However, individual transcript sequences of the same gene can differ through naturally occurring variations (e.g. polymorphisms), each with its own valid existence. This clone is substantially in agreement with the reference, but a complete review of all prevailing variants is recommended prior to use. [More info](#)

OTI Annotation: This clone was engineered to express the complete ORF with an expression tag. Expression varies depending on the nature of the gene.

Components: The ORF clone is ion-exchange column purified and shipped in a 2D barcoded Matrix tube containing 10ug of transfection-ready, dried plasmid DNA (reconstitute with 100 ul of water).

Reconstitution Method:

1. Centrifuge at 5,000xg for 5min.
2. Carefully open the tube and add 100ul of sterile water to dissolve the DNA.
3. Close the tube and incubate for 10 minutes at room temperature.
4. Briefly vortex the tube and then do a quick spin (less than 5000xg) to concentrate the liquid at the bottom.
5. Store the suspended plasmid at -20°C. The DNA is stable for at least one year from date of shipping when stored at -20°C.

RefSeq: [NM_001009923.2](#)

RefSeq Size: 1574 bp

RefSeq ORF: 552 bp

Locus ID: 29058

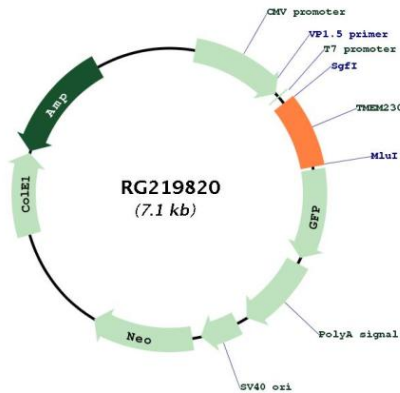
UniProt ID: [Q96A57](#)

Cytogenetics: 20p13-p12.3

Protein Families: Transmembrane

Gene Summary: This gene encodes a multi-pass transmembrane protein that belongs to the TMEM134/TMEM230 protein family. The encoded protein localizes to secretory and recycling vesicle in the neuron and may be involved in synaptic vesicles trafficking and recycling. Mutations in this gene may be linked to familial Parkinson's disease. [provided by RefSeq, Mar 2017]

Product images:



Circular map for RG219820