

Product datasheet for **RG219797**

BRCA1 (NM_007300) Human Tagged ORF Clone

Product data:

Product Type:	Expression Plasmids
Product Name:	BRCA1 (NM_007300) Human Tagged ORF Clone
Tag:	TurboGFP
Symbol:	BRCA1
Synonyms:	BRCA1; BRCC1; BROVCA1; FANCS; IRIS; PNCA4; PPP1R53; PSCP; RNF53
Mammalian Cell Selection:	Neomycin
Vector:	pCMV6-AC-GFP (PS100010)
E. coli Selection:	Ampicillin (100 ug/mL)
ORF Nucleotide Sequence:	>RG219797 representing NM_007300 Red=Cloning site Blue=ORF Green=Tags(s)

TTTTGTAATACGACTCACTATAGGGCGGCCGGAATTCGTCGACTGGATCCGGTACCGAGGAGATCTGCC
GCC**CGATCGCC**

ATGGATTTATCTGCTCTTCGCGTTGAAGAAGTACAAAATGTCATTAATGCTATGCAGAAAATCTTAGAGT
GTCCCATCTGTCTGGAGTTGATCAAGGAACCTGTCTCCACAAAGTGTGACCACATATTTTGCAAATTTTG
CATGCTGAACTTCTCAACCAGAAGAAAGGGCCTTCACAGTGCCTTTATGTAAGAATGATATAACCAA
AGGAGCCTACAAGAAAGTACGAGATTTAGTCAACTTGTGAAGAGCTATTGAAAAATCATTGTGCTTTTC
AGCTTGACACAGGTTTGGAGTATGCAAACAGCTATAATTTTGAAAAAGGAAAAAATACTCTCCTGAACA
TCTAAAAGATGAAGTTTCTATCATCCAAAGTATGGGCTACAGAAACCGTGCCAAAAGACTTCTACAGAGT
GAACCCGAAAATCCTTCCTTGCAGGAAACCACTCTCAGTGTCCAACCTCTAACCTTGAAGTGTGAGAA
CTCTGAGGACAAAAGCAGCGGATACAACCTCAAAGACGCTGTCTACATTGAATGGGATCTGATTCTTC
TGAAGTACCGTTAATAAGGCAACTTATTGCAAGTGTGGGAGATCAAGAATTGTTACAAATCACCCCTCAA
GGAACCAGGGATGAAATCAGTTTGGATTCTGCAAAAAGGCTGCTTGTGAATTTTCTGAGACGGATGTA
CAAATACTGAACATCATCAACCCAGTAATAATGATTTGAACCACTGAGAAGCGTGCAGCTGAGAGGCA
TCCAGAAAAGTATCAGGGTAGTTCTGTTCAAACCTGCATGTGGAGCCATGTGGCAGAAATACTCATGCC
AGCTCATTACAGCATGAGAACAGCAGTTTATTACTCACTAAAGACAGAATGAATGTAGAAAAGGCTGAAT
TCTGTAATAAAAAGCAAACAGCCTGGCTTAGCAAGGAGCCAAACATAACAGATGGGCTGGAAGTAAGGAAAC
ATGTAATGATAGGCGGACTCCCAGCACAGAAAAAAGGTAGATCTGAATGCTGATCCCCTGTGTGAGAGA
AAAGAATGGAATAAGCAGAACTGCCATGCTCAGAGAATCCTAGAGATACTGAAGATGTTCTTGATAA
CACTAAATAGCAGCATTAGAAAAGTAAATGAGTGGTTTTCCAGAAGTATGAAGTGTAGGTTCTGATGA
CTCACATGATGGGAGTCTGAATCAAATGCCAAAGTATGATGATTGGACGTTCTAAATGAGGTAGAT
GAATATTCTGGTTCTTCAGAGAAAATAGACTTACTGGCCAGTATCCTCATGAGGCTTTAATATGTA
GTGAAAGAGTTCACTCCAAATCAGTAGAGAGTAATATTGAAGACAAAATATTTGGGAAAACCTATCGGAA
GAAGGCAAGCCTCCCAACTTAAGCCATGTAAGTAAAACTAATTATAGGAGCATTGTTACTGAGCCA



[View online »](#)

CAGATAATACAAGAGCGTCCCCTCACAAATAAATTAAGCGTAAAAGGAGACCTACATCAGGCCTTCATC
 CTGAGGATTTTATCAAGAAAGCAGATTTGGCAGTTCAAAAGACTCCTGAAATGATAAATCAGGGAACATA
 CCAAACGGAGCAGAATGGTCAAGTGATGAATTTACTAATAGTGGTCATGAGAATAAAACAAAAGGTGAT
 TCTATTCAGAATGAGAAAAATCCTAACCAATAGAATCACTCGAAAAAGAATCTGCTTTCAAACGAAAAG
 CTGAACCTATAAGCAGCAGTATAAGCAATATGGAACCTCGAATTAATATCCACAATTCAAAAGCACCTAA
 AAAGAATAGGCTGAGGAGGAAGTCTTCTACCAGGCATATTCATGCGCTTGAAGTGTAGTGTAGTGTAGT
 CTAAAGCCACCTAATTGTACTGAATGCAAATTTGATAGTTGTTCTAGCAGTGAAGAGATAAAGAAAAAAA
 AGTACAACCAAAATGCCAGTCAGGCACAGCAGAAAACCTACAACCTCATGGAAGGTAAAGAACCTGCAACTGG
 AGCCAAGAAGAGTAACAAGCCAAATGAACAGACAAGTAAAAGACATGACAGCGTACTTTCCAGAGCTG
 AAGTTAACAAATGCACCTGGTTCTTTACTAAGTGTTCAAATACCAGTGAACCTAAAGAATTTGTCAATC
 CTAGCCTTCCAAGAGAAGAAAAAGAAGAGAAACTAGAAACAGTTAAAGTGTCTAATAATGCTGAAGACCC
 CAAAGATCTCATGTTAAGTGGAGAAAGGTTTTGCAAACCTGAAAGATCTGTAGAGAGTAGCAGTATTTCA
 TTGGTACCTGGTACTGATTATGGCACTCAGGAAAGTATCTCGTTACTGGAAGTTAGCACTCTAGGGAAGG
 CAAAAACAGAACCAATAAATGTGTGAGTCAGTGTGCAGCATTGAAAACCCCAAGGACTAATTCATGG
 TTGTTCCAAAGATAATAGAAATGACACAGAAGGCTTTAAGTATCCATTGGGACATGAAGTTAACACAGT
 CGGAAAACAAGCATAGAAATGGAAGAAAAGTGAACCTTGATGCTCAGTATTTGCAGAATACATTCAGGTTT
 CAAAGCGCCAGTCATTTGCTCCGTTTTCAAATCCAGGAAATGCAGAAGAGGAATGTGCAACATTTCTCTGC
 CCACTCTGGGTCCTTAAAGAAACAAAGTCCAAAAGTCACTTTTGAATGTGAACAAAAGGAAGAAAATCAA
 GGAAAGAATGAGTCTAATATCAAGCCTGTACAGACAGTTAATATCACTGCAGGCTTTCTGTGGTTGGTC
 AGAAAGATAAGCCAGTTGATAATGCCAAATGTAGTATCAAAGGAGGCTCTAGGTTTTGTCTATCATCTCA
 GTTCAGAGGCAACGAACTGGACTCATTACTCAAATAAACATGGACTTTTACAAAACCCATATCGTATA
 CCACCATTTTTCCCATCAAGTCATTTGTTAAAACCTAAATGTAAAGAAAAATCTGCTAGAGGAAACATTTG
 AGGAACATTCATGTACCTGAAAGAGAAATGGGAAATGAGAACATTCCAAGTACAGTACAGCACAATTAG
 CCGTAATAACATTAGAGAAAATGTTTTTAAAGAAGCCAGCTCAAGCAATATTAATGAAGTAAAGTTCCAGT
 ACTAATGAAGTGGGCTCCAGTATTAATGAATAGGTTCCAGTGTGAAAACATTCAGCAGAACTAGGTA
 GAAACAGAGGGCCAAAATGAAATGCTATGCTTAGATTAGGGGTTTTGCAACCTGAGGCTATAAAACAAAG
 TCTTCTGGAAGTAATTGTAAGCATCCTGAAATAAAAAAGCAAGAATATGAAGAAGTAGTTCAGACTGTT
 AATACAGATTTCTCTCCATATCTGATTTAGATAAATAGAACAGCCTATGGGAAGTAGTCATGCATCTC
 AGGTTTTGTTCTGAGACACCTGATGACCTGTTAGATGATGGTGAATAAAGGAAGATACTAGTTTTGCTGA
 AAATGACATTAAGGAAAGTTCTGCTGTTTTAGCAAAAAGCGTCCAGAAAGGAGAGCTTAGCAGGAGTCTC
 AGCCCTTTCACCCATACACATTTGGCTCAGGGTTACCGAAGAGGGGCCAAGAAATAGAGTCTCAGAAG
 AGAACTTATCTAGTGAGGATGAAGAGCTCCCTGCTTCCAACACTTGTTATTTGGTAAAGTAAACAATAT
 ACCTTCTCAGTCTACTAGGCATAGCACCGTTGCTACCGAGTGTCTGTCTAAGAACACAGAGGAGAATTTA
 TTATCATTGAAGAATAGCTTAAATGACTGCAGTAACCAGGTAATATTGGCAAAGGCATCTCAGGAACATC
 ACCTTAGTGAGGAAACAAAATGTTCTGCTAGCTTGTTTTCTTCACAGTGCAGTGAATTGGAAGACTTGAC
 TGCAAATACAAACACCCAGGATCCTTTCTTGATTGGTTCTTCAAACAAATGAGGCATCAGTCTGAAAGC
 CAGGGAGTTGGTCTGAGTGACAAGGAATGGTTTCAGATGATGAAGAAAGAGGAACGGGCTTGAAGAAA
 ATAAATCAAGAAGAGCAAAGCATGGATTCAAACTTAGGTGAAGCAGCATCTGGGTGTGAGAGTGAACAAG
 CGTCTCTGAAGACTGCTCAGGGCTATCCTCTCAGAGTACATTTTAACTACTCAGCAGAGGGATACCATG
 CAACATAACCTGATAAAGCTCCAGCAGGAAATGGCTGAACTAGAAGCTGTGTTAGAACAGCATGGGAGCC
 AGCCTTCTAACAGCTACCTTCCATCATAAGTACTCTTCTGCCCTTGAGGACCTGCGAAAATCCAGAACA
 AAGCACATCAGAAAAAGGGGTGACCCAGTCTATTAAGAAAGAAAAATGCTGAATGAGCATGATTTTGAA
 GTCAGAGGAGATGTGGTCAATGGAAGAAACCAAGGTCCAAAGCGAGCAAGAGAATCCAGGACAGAA
 AGATCTTCAGGGGGCTAGAAATCTGTTGCTATGGGCCCTTCAACCAATGCCCACAGATCAACTGGAATG
 GATGGTACAGCTGTGTGGTCTTCTGTGGTGAAGGAGCTTTCATCATTACCCTTGGCACAGGTGTCCAC
 CCAATTGTGGTTGTGCAGCCAGATGCCTGGACAGAGGACAATGGCTTCCATGCAATTTGGGCAGATGTGTG
 AGGCACCTGTGGTGACCCGAGAGTGGGTGTTGGACAGTGTAGCACTCTACCAGTGCCAGGAGCTGGACAC
 CTACCTGATACCCAGATCCCCACAGCCACTAC

ACGCGTACGCGGCCGCTCGAG - GFP Tag - GTTTAA

Protein Sequence: >RG219797 representing NM_007300
 Red=Cloning site Green=Tags(s)

```

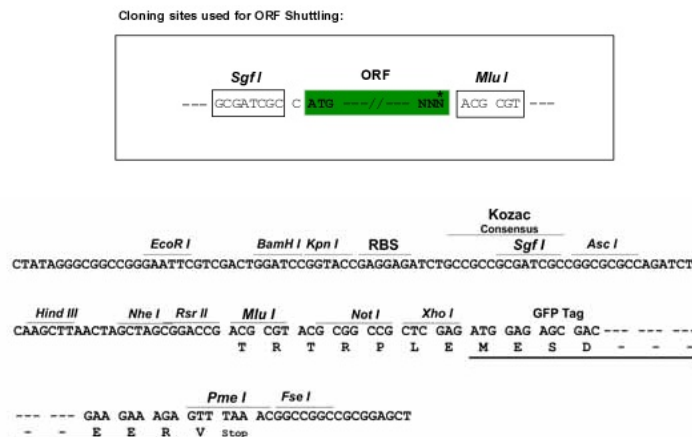
MDLSALRVEEVQNVINAMQKILECPICLLEIKEPVSTKCDHIFCKFCMLKLLNQKKGPSQCPLCKNDITK
RSLQESTRFSQLVEELLKIICAFQLDTGLEAYANSYNFAKKENNSPEHLKDEVSI IQSMGYRNRKRLQS
EPENPISLQETSLSVQLSNLGTVRTLRKQRIQPQKTSVYIELGSDSSEDTV NKATYCSVGDQELLQITPQ
GTRDEISLDSAKKAACEFSETDVTNTEHHQPSNNDLNTTEKRAAERHPEKYQGSSVSNLHVPCGNTNTHA
SSLQHENSLLLLTKDRMNVKEAEFCNKSKQPGLARSQHNRWAGSKETCNDRRTPSTEKKVDLNADPLCER
KEWNKQKLPCCSENPRDTEVPWITLNSSIQKVNEWFSRSDLELGSDDSHDGESESENAKVADVLDVLEVD
EYSGSSEKIDLLASDPHEALICKSERVHSKSVESNIEDKIFGKTYRKKASLPNLSHVTENLIIGAFVTEP
QIIQERPLTNLKRKRRPTSGLHPEDFIKKADLAVQKTPEMINQGTNQTEQNGQVMNITNSGHENKTKGD
SIQNEKNPNPIESLEKESAFKTKAEPISSSISNMELELNIHNSKAPKKNRLRRKSSTRHIAHALELVSRN
LSPNCTELQIDSCSSSEI KKKKYNQMPVRHSRNLQLMEGKEPATGAKKSNKPNEQTSKRHSDTFPEL
KLTNAPGSFTKCSNTSELKEFVNPSLPREEKEEKLETVKVSNNAEDPKDMLSGERVLTQERSVSSSSIS
LVPGTDYGTQESISLLEVSTLGAKTEPNKCVSQCAAFENPKGLIHGCSKDNRNDEGFKYPLGHEVNHS
RETSIEMEESELDAQYLQNTFKVSKRQSFAPFSNPGNAEEECATFSAHSGSLKKQSPKVTFECEQKEENQ
GKNESNIKPVQTVNITAGFPVVGQKDKPVDNAKCSIKGGSRFCLSSQFRNETGLITPNKHGLLQNPYRI
PPLFPIKSFVKTKCKKNLLEENFEHSMSPEREMGNENIPSTVSTISRNNIRENVFKEASSNINEVGSS
TNEVGSSINEIGSSDENIQAELGRNRGPKLNAMLRLGVLQPEVYKQSLPGSNCKHPEIKKQEYEEVVQTV
NTDFSPYLSIDNLEQPMGSSHASQVCSETPDDLDDGEIKEDTSAFENDIKESSAVFSKSVQKGELSRSP
SPFTHTHLAQGYRRGAKKLESSEENLSEDEELPCFQHLLFGKVNIPSQSTRHSTVATECLSKNTEENL
LSLKNSLNDCSNQVILAKASQEHHLSEETKCSASL FSSQCSELEDLTANTNTQDPFLIGSSKQMRHQSES
QGVGLSDKELVSDDEERGTGLEENNQEEQSMDSNLGAAASGCESETSVSEDCSGLSSQSDILTTQQRDTM
QHNLIKLQQEMAELEAVLEQHGSPNSYPSII SDSSALEDLRNPEQSTSEKGVTSIKERKMLNEHDFE
VRGDVVNGRNHQGPKRARESDRKIFRGLIECCYGPFTNMPDQLEWVQVLCGASVVKELSSFTLTGTGVH
PIVVVQPDATEDNGFHAIGQMCEAPVVTREWVLDVALYQCQELDTYLIPQIPHSHY
  
```

TRTRPLE - GFP Tag - V

Chromatograms: https://cdn.origene.com/chromatograms/ja2625_c08.zip

Restriction Sites: SgfI-MluI

Cloning Scheme:

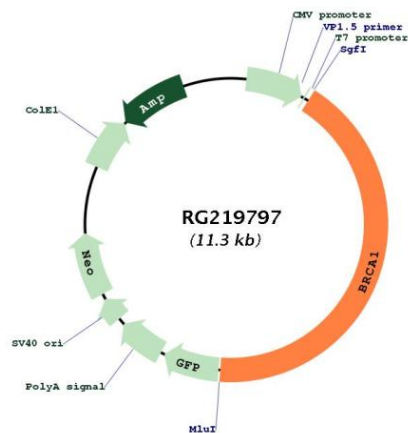


ACCN: NM_007300

ORF Size:	4794 bp
OTI Disclaimer:	<p>Due to the inherent nature of this plasmid, standard methods to replicate additional amounts of DNA in E. coli are highly likely to result in mutations and/or rearrangements. Therefore, OriGene does not guarantee the capability to replicate this plasmid DNA. Additional amounts of DNA can be purchased from OriGene with batch-specific, full-sequence verification at a reduced cost. Please contact our customer care team at custsupport@origene.com or by calling 301.340.3188 option 3 for pricing and delivery.</p> <p>The molecular sequence of this clone aligns with the gene accession number as a point of reference only. However, individual transcript sequences of the same gene can differ through naturally occurring variations (e.g. polymorphisms), each with its own valid existence. This clone is substantially in agreement with the reference, but a complete review of all prevailing variants is recommended prior to use. More info</p>
OTI Annotation:	This clone was engineered to express the complete ORF with an expression tag. Expression varies depending on the nature of the gene.
Components:	The ORF clone is ion-exchange column purified and shipped in a 2D barcoded Matrix tube containing 10ug of transfection-ready, dried plasmid DNA (reconstitute with 100 ul of water).
Reconstitution Method:	<ol style="list-style-type: none">1. Centrifuge at 5,000xg for 5min.2. Carefully open the tube and add 100ul of sterile water to dissolve the DNA.3. Close the tube and incubate for 10 minutes at room temperature.4. Briefly vortex the tube and then do a quick spin (less than 5000xg) to concentrate the liquid at the bottom.5. Store the suspended plasmid at -20°C. The DNA is stable for at least one year from date of shipping when stored at -20°C.
RefSeq:	NM_007300.2 , NP_009231.1
RefSeq Size:	6396 bp
RefSeq ORF:	5655 bp
Locus ID:	672
UniProt ID:	P38398
Cytogenetics:	17q21.31
Protein Families:	Druggable Genome, Transcription Factors
Protein Pathways:	Ubiquitin mediated proteolysis

Gene Summary:

This gene encodes a 190 kD nuclear phosphoprotein that plays a role in maintaining genomic stability, and it also acts as a tumor suppressor. The BRCA1 gene contains 22 exons spanning about 110 kb of DNA. The encoded protein combines with other tumor suppressors, DNA damage sensors, and signal transducers to form a large multi-subunit protein complex known as the BRCA1-associated genome surveillance complex (BASC). This gene product associates with RNA polymerase II, and through the C-terminal domain, also interacts with histone deacetylase complexes. This protein thus plays a role in transcription, DNA repair of double-stranded breaks, and recombination. Mutations in this gene are responsible for approximately 40% of inherited breast cancers and more than 80% of inherited breast and ovarian cancers. Alternative splicing plays a role in modulating the subcellular localization and physiological function of this gene. Many alternatively spliced transcript variants, some of which are disease-associated mutations, have been described for this gene, but the full-length nature of only some of these variants has been described. A related pseudogene, which is also located on chromosome 17, has been identified. [provided by RefSeq, May 2020]

Product images:


Circular map for RG219797