

Product datasheet for **RG219789**

CAMTA1 (NM_015215) Human Tagged ORF Clone

Product data:

Product Type:	Expression Plasmids
Product Name:	CAMTA1 (NM_015215) Human Tagged ORF Clone
Tag:	TurboGFP
Symbol:	CAMTA1
Synonyms:	CANPMR
Mammalian Cell Selection:	Neomycin
Vector:	pCMV6-AC-GFP (PS100010)
E. coli Selection:	Ampicillin (100 ug/mL)
ORF Nucleotide Sequence:	>RG219789 representing NM_015215 Red=Cloning site Blue=ORF Green=Tags(s)

TTTTGTAATACGACTCACTATAGGGCGGCCGGAATTCGTCGACTGGATCCGGTACCGAGGAGATCTGCC
GCC**CGATCGCC**

ATGTGGCGCGGGAGGGGAAATGGCTGCCGAAAACAAGCCGGAAGAGCGTTTCCCAAAGTGTATTCTGCG
GAACTAGCACCTACTGTCTCAACACCGTGCCACCTATAGAAGATGATCATGGGAACAGCAATAGTAG
TCATGTAAAAATCTTTTACCGAAAAAGCTGCTTGAATGTCTGCCGAAATGTTCAAGTTTACCAAAGAG
AGGCACCGCTGGAACACTAATGAGGAAATGCAGCTTATTTAATAACATTTGAGAAACACGAAGAATGCG
TAACCACCTCCCCTAAGACAAGACCACAGAATGGCTCAATGATACTCTACAACAGGAAGAAAGTGAATA
CAGGAAAGATGGGTATTGCTGAAAAAGAGGAAAGATGGGAAAACGACCAGAGAGGACCACATGAAACTC
AAGGTCCAGGGAGTGAGTGCTTGTACGGCTGCTATGTCCATTCTCCATCATCCCCACCTTCCACCGGA
GGTGCTACTGGCTCCTTCAGAACCCCGACATCGTCTGGTGCCTACCTGAACGTGCCGGCCATCGAGGA
CTGCGGCAAGCCTTTCGGGCCCATCCTCTGCTCCATCAACACCGACAAGAAGGAGTGGGCGAAATGGACG
AAAGAAGAGCTCATCGGGCAGCTGAAACCCATGTTCCATGGCATCAAGTGGACCTGCAGCAATGGGAACA
GCAGCTCAGGCTTCTCGGTGGAACAGCTGGTGCAGCAGATCCTCGACAGCCACCAGCAAGCCCCAGCC
GCGGACCCACAACCTGCCTCTGCACCGGCAGCCTGGGAGCTGGCGGCAGCRTGCATCACAAGTKTAACAGC
GCCAAACACCGCATCATCTCGCCAAGGTGGAGCCAGGACAGGGGGTACGGGAGCCACTCGGAGGTGC
AGCACAATGACGTGTCGGAGGGCAAGCAGCAGCACAGCCACAGCAAGGGCTCCAGCCGTGAGAAGAGGAA
CGGCAAGGTGGCAAGCCGTGCTCCTGCACCAGAGCAGCACCAGGTCTCCTCCACCAACCAGGTGGAA
GTCCCCGACACCACCCAGAGCTCCCCTGTGTCCATCAGCAGCGGGCTCAACAGCGACCCGGACATGGTGG
ACAGCCCCGTGGTACAGGTGTGTCCGGTATGGCGGTGGCCTCTGTGATGGGGAGCTTGTCCCAGAGCGC
CACGGTGTTCATGTGAGAGGTACCAATGAGGCCGTGTACACCATGTCCCCACCCTGGCCCCAACCCAC
CACCTCCTCTCACCTGACGCTCTCAGGGCCTCGTCTGGCCGTGAGCTCTGATGGCCACAAGTTCGCTT
TCCCACCACGGGAGCTCAGAGAGCCTGTCCATGCTGCCACCAACGTGTCCGAAGAGCTGGTCTCTC
CACCACCTCGACGGTGGCCGGAAGATTCCAGAAACCACCATGAACCTTTGACCCGACTGTTTCTTAAT



[View online >](#)

AACCCAAAGCAGGGCCAGACGTACGGGGTGGAGGCTGAAAGCCGAGATGGTCAGCTCCAACATCCGGC
ACTCGCCACCCGGGGAGCGGAGCTTACGCTTTACCACCGTCTCACCAAGGAGATCAAGACCGAGGACAC
CTCCTTCGAGCAGCAGATGGCCAAAGAAGCGTACTCCTCCTCCGCGGGCGGCTGTGGCAGCCAGCTCCCTC
ACCCTGACCGCCGGCTCCAGCCTCCTGCCGTGGGGCGGGCCTGAGTCCCAGCACCACCCTGGAGCAGA
TGGACTTCAGCGCCATCGACTCCAACAAGGACTACACGTCCAGCTTCAGCCAGACGGGCCACAGCCCCCA
CATCCACCAGACCCCTCCCGAGCTTCTCCTGCAGGACGCCAGCAAACCCCTCCCGTCGAGCAGAA
ACCCACAGCAGCCTGAGTGACTCTGGGGCACCTTCGTGATGCCACGGTGAAAAACGGAGCCCTCGTCCC
AAACCAGCTCCTGCAGCGGTACGTGGAGACGCGGATCGAGTCCACTTCCCTCCACCTCATGCAGTT
CCAGGCCAACTTCCAGGCCATGACGCGCAGAAGGGGAGGTACCATGGAGACCTCGCAGGCGGGGAAAGG
AGCGAGGTCTGTCAAGTCTGGGGAGCTGCAGGCTTGCAGCTCTGAGCACTACCTGCAGCCGGAGACCA
ACGGGGTAAATCCGAAGCGCCGGCGGCTCCCCATCCTCCGGGCAACGTGGTGCAGGGACTTACCCCGT
GGCCAGCCAGCCTCGGCAACGCTCCAACATGGAGCTCAGCCTGGACCACTTTGACATCTCCTTCAGC
AACCAGTTCTCCGACCTGATCAACGACTTATCTCCGTGGAGGGGGCAGCAGCACCATCTATGGGCACC
AGCTGGTGTGGGGGACAGCAGCGGCTCTCACAGTCAGAGGACGGGGCGGGCCCCCTTACCCAGGC
AGAGATGTGCTCCCTGCTGTAGCCCCAGCAGGGTAGCTGCAGCTGAGCAGCTCGGAGGGCGGGGCC
AGCACCATGGCCTACATGCAGCTCGCCAGGTGGTCTCGCCGCCTCGGCCAGGGCACCCTAGGCATGC
TGACAGCAGAGCGGACGGGTGTTATGGTGACCGACTACTCCCCAGAGTGGTCTTACCCAGAGGGAGGAGT
GAAGTCTCATCACAGGCCCGTGGCAAGAAGCCAGCAATAACTACAGCTGCCTGTTGACCAGATCTCA
GTGCTGCATCCCTGATTACGCTGGGGTGTGTGCTGCTACTGCCAGCCCATGACACTGGTCTTGTGA
CCCTACAAGTTGCCTTCAACAACCAGATCATCTCCAACCTCGTGGTGTGTTGAGTACAAAGCCCGGGCTCT
GCCACGCTCCCTTCTCCAGCAGACTGGCTGTGTTGGACGATAACCAGTTCCAGGATGTCCATCCTG
GAACGACTGGAGCAGATGGAGAGGAGGATGGCCGAGATGACGGGTCCCAGCAGCACAACAGGCGAGGC
GAGGCGGACAGTGGAGGCGGACGCGGAGCGGGAATGGAGGGAGCCAGGCACAGTGTGCTTCTGGGAC
TGGGGCTTGGGGAGCTGTTTTGAGAGCGGTGTGGTCTGGTATGCGAGAAGATGATGAGCCGAGCCTGC
TGGGCGAAGTCCAAGCACTTGATCCACTCAAAGACTTTCGCGGAATGACCTACTCCACCTGGCCGCTG
CCCAGGGCTATGCCACCCTAATCCAGACCTCATCAAATGGCGTACAAAGCACGCGGATAGCATTGACCT
GGAAGTGAAGTTGACCCCTGAATGTGGACCACTTCTCCTGACTCCTCTGATGTGGGCGTGTGCCCTA
GGGCACTTGAAGCTGCCGTGCTGTACAAGTGGGACCGTGGGCCATCTCGATTCCCGACTCTTAG
GAAGGCTGCCTTGGGAATTGCCAGGTCACGGGTGATGAAATTAGCAGAGTGTCTGGAGCACCTGCA
GAGAGATGAGCAGGCTCAGCTGGGACAGAACCCAGAATCCACTGCTGCAAGCGAAGAGCCAGCACA
GAGAGCTGGATGGCCAGTGGCACAGCGAAGCCATCAGCTCTCCAGAAATACCCAGGGAGTCACTGTTA
TTGCAAGCACAACCCAGAGCTGAGAAGACCTCGTTCTGAACCCCTAATTAATAAGCAGTGGAGGCCA
CAAAGATTATCCGGCTCCAAAAAGCATAAATTGAACCTGAGTACTTCCAGACAAGGCAGGAGAAGCTG
CTTCCCACTGCACTGAGTCTGGAAGAGCCAAATATCAGGAAGCAAAGCCCTAGTTCTAAGCAGTCTGTCC
CCGAGACACTCAGCCCCAGTGAAGGAGTGGGGACTTCCAGCCGGAACTTCCCCCTCCACTCCAGAGAC
TGCAGCATTTCAGCCTCTGGATCTCAGCCTGTAGGAAAGTGAATTCCAAAGATCTTTACATTGGTGTG
TCTACAGTACAGGTGACTGGAATCCGAAGGGGACCAGTGTAGGAAAGGAGGCAGCACCTTACAGGTGC
GTCCACGGGAACCAATGAGTGTCTGATGATGGCTAACAGAGAGGTGGTGAATACAGAGCTGGGGTCCCTA
CCGTGATAGTGCAGAAAATGAAGAATGCGGCCAGCCCATGGATGACATACAGGTGAACATGATGACCTTG
GCAGAACACATTATTGAAGCCACACCTGACCGAATCAAGCAGGAGAATTTGTGCCATGGAGTCCCTCAG
GATTGAAAAGAACAGACCCTGCCACCATTAGCAGTACAATGAGCTGGCTGGCCAGTTATCTAGCGGATGC
TGACTGCCTTCCAGTGCTGCCAGATCCGAAGTGCATATAACGAGCCTTAACCCCTTCTTCTAATAACC
AGCTTGAGCCCTGTTGGCTCTCCGTCAGTGAAATCGCTTTCGAGAAACCTAACCTTCCCTCCGCGCGG
ATTGGTCAGAATCCTGAGTGCATCTACCAGTGAAGGTAGAGAATGAGTTTGTCTCAGCTCACTGTGC
TGATCATGAACAGAGAGAATCTATGAGGCTGCCAGGCTGTCCAGACAGCTTTCGGAAATACAAGGGC
CGACCTTTCGGGAACAGCAAGAAGTGTGCTGCTGTTATTACGCGTTGTTACAGAAAAATAAACAGT
ACGCATTTATAAAAAGATGACACAGGCTGCCATCCTTATCCAGAGCAAATTCGAAGTACTATGAACA
AAAAAATTCAGCAGAGCCGACGGGCTGCTGTGCTCATCAAAAAGTACTACCGAAGTTATAAGAAATGT
GGCAAAAGACGGCAGGCTCGCCGACGGCTGTGATTGTACAACAGAAACTCAGGAGCAGTTTGCTAACCA
AAAAGCAGGATCAAGCTGCTCGAAAAATAATGAGGTTTCTTCGCCGCTGTGCCACAGCCCCCTGGTGG
CCATAGGCTGTACAAAAGGAGTGAAGAATTGAAAAGGCCAAGGAACT

ACGCGTACGCGGCCGCTCGAG - GFP Tag - GTTTAA

Protein Sequence:

>RG219789 representing NM_015215
 Red=Cloning site Green=Tags(s)

MWRAEGKWLPKTSRKSVSQSVFCGTSTYCVLNTVPPIEDDHGNSNSSHVKIFLPPKLLLECLPKCSSLPE
 RHRWNTNEEIAAYLITFEKHEEWLTTSPKTRPQNGSMILYNRKKVKYRKDGYCWKKRDKGKTTREDHMKL
 KVQGVCELYGCVYHSSIIPTFHRRCYWLLQNPDIVLVHYLNVPAIEDCGKPCGPILCSINTDKKEWAKWT
 KEELIGQLKPMFHGIKWTCNNGNSSSGFVEQLVQQILDSHQTKPQRTHNCLCTGSLGAGGSXHHKXNS
 AKHRIISPKEVPTGGYVSHSEVQHNDVSEKHEHSHKSSREKRNKGVAKPVLHQSSTEVSSTNQVE
 VPDTTQSSPVSIISSGLNSDPDMVDSPPVTVGVSMAVASVMGSLQSATVFMSEVTNEAVYMSPTAGPNH
 HLLSPDASQGLVAVSSDGHKFAFPTTGSSELSMLPTNVSEELVLSTLTDGGRKIPETTMNFDPCFLN
 NPKQGGTYGGGLKAEMVSSNIRHSPPGERSFSFTTVLTKKIKTEDTSFEQQMAKEAYSSSAAVAASSL
 TLTAGSLLPSGGGLSPSTTLEQMDFAIDSNKDYTSFSQTGHSPHIHQTPSPSFFLQDASKPLPVEQN
 THSSLSDSGGTFVMPTVKTEASSQTSKSGHVETRIESTSSLHLMQFQANFQAMTAEGEVMTESQAAEG
 SEVLLKSGELQACSSEHYLQPETNGVIRSAGGVPIIPGNVQGLYPVAQPSLGNASNMELSLDHFDISFS
 NQFSDLINDFISVEGGSSTIYGHQLVSGDSTALSQSEDGARAPFTAEMCLPCCSPQQGSLQLSSSEGGA
 STMAYMHVAEVSAASAQGLGMLQQSGRVFMTDYSPEWSYPEGGVKVLITGPWQEAANNYSCLFDQIS
 VPASLIQPGVLCYCPAHDGTLVTLQVAFNNQIISNSVVFYKARALPTLPSSQHDWLSLDDNQFRMSIL
 ERLEQMERRMAEMTGSQHQKQASGGSSGGSGSNGGSAQCASGTGALGSCFESRVVVCEKMSRAC
 WAKSKHLIHSKTRFGMTLLHLAAAQGYATLIQTLIKWRTKHADSIDLELEVDPLNVDHFSCTPLMWACAL
 GHLEAAVVLKWDRAISIPDSLGRPLGIARSRGHVKLAECLEHLQRDEQAQLGQNPRIHCPASEEPST
 ESWMAQWHSEAISSPEIPKGVTVIASTNPELRRRSEPSNYSSSESHKDYAPAKKHKLNPYFQTRQEKL
 LPTALSLEENIRKQSPSSKQSVPETLSPSEGVRDFSRLESPPTPETAFAFQASGSQPVGKWNKDLYIGV
 STVQVTGNPKGTSVKGAAAPSQVRPREPMSVLMANREVVNTELGYSYRDSAENECEGQPMDDIQVNMML
 AEHIIIEATPDRIKQENFVMESSGLERTDPATISSTMSWLASYLADADCLPSAAQIRSAVNEPLTPSSNT
 SLSPVGSVPVSEIAFEKPNLPSAADWSEFLSASTSEKVENEFAQLTSDHEQRELVEAARLVQTAFRKYKG
 RPLREQQEVAAAVIQRCYRKYQYALYKMTQAAILIQSKFRSYEQKFKQSRRAAVLIQKYYSRYKCK
 GKRRQARRTAVIVQKLRSSLLTKKQDQAARKIMRFLRRCRHSPLVDHRLYKRSERIEKGQGT

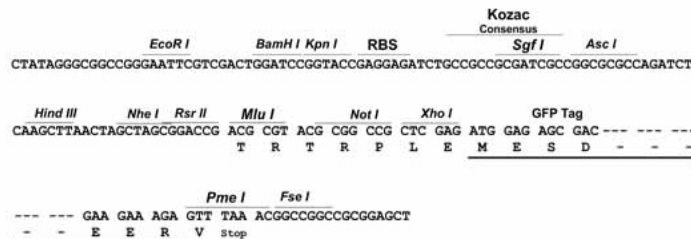
TRTRPLE - GFP Tag - V

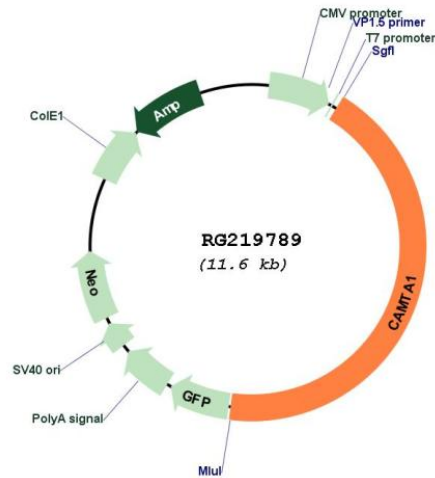
Restriction Sites:

SgfI-MluI

Cloning Scheme:

Cloning sites used for ORF Shuttling:



Plasmid Map:


ACCN: NM_015215

ORF Size: 5019 bp

OTI Disclaimer: The molecular sequence of this clone aligns with the gene accession number as a point of reference only. However, individual transcript sequences of the same gene can differ through naturally occurring variations (e.g. polymorphisms), each with its own valid existence. This clone is substantially in agreement with the reference, but a complete review of all prevailing variants is recommended prior to use. [More info](#)

OTI Annotation: This clone was engineered to express the complete ORF with an expression tag. Expression varies depending on the nature of the gene.

Components: The ORF clone is ion-exchange column purified and shipped in a 2D barcoded Matrix tube containing 10ug of transfection-ready, dried plasmid DNA (reconstitute with 100 ul of water).

Reconstitution Method:

1. Centrifuge at 5,000xg for 5min.
2. Carefully open the tube and add 100ul of sterile water to dissolve the DNA.
3. Close the tube and incubate for 10 minutes at room temperature.
4. Briefly vortex the tube and then do a quick spin (less than 5000xg) to concentrate the liquid at the bottom.
5. Store the suspended plasmid at -20°C. The DNA is stable for at least one year from date of shipping when stored at -20°C.

RefSeq: [NM_015215.1](#), [NP_056030.1](#)

RefSeq Size: 8457 bp

RefSeq ORF: 5022 bp

Locus ID: 23261

UniProt ID: [Q9Y6Y1](#)

Cytogenetics: 1p36.31-p36.23

Protein Families: Transcription Factors

Gene Summary: The protein encoded by this gene contains a CG1 DNA-binding domain, a transcription factor immunoglobulin domain, ankyrin repeats, and calmodulin-binding IQ motifs. The encoded protein is thought to be a transcription factor and may be a tumor suppressor. However, a translocation event is sometimes observed between this gene and the WWTR1 gene, with the resulting WWTR1-CAMTA1 oncoprotein leading to epithelioid hemangioendothelioma, a malignant vascular cancer. [provided by RefSeq, Mar 2017]