

Product datasheet for **RG219788**

Neurexin II alpha (NRXN2) (NM_015080) Human Tagged ORF Clone

Product data:

Product Type:	Expression Plasmids
Product Name:	Neurexin II alpha (NRXN2) (NM_015080) Human Tagged ORF Clone
Tag:	TurboGFP
Symbol:	NRXN2
Mammalian Cell Selection:	Neomycin
Vector:	pCMV6-AC-GFP (PS100010)
E. coli Selection:	Ampicillin (100 ug/mL)
ORF Nucleotide Sequence:	>RG219788 representing NM_015080 Red=Cloning site Blue=ORF Green=Tags(s)

TTTTGTAATACGACTCACTATAGGGCGGCCGGGAATTCGTCGACTGGATCCGGTACCGAGGAGATCTGCC
GCC**CGATCGCC**

ATGGCGTCCGGGAGCCGGTGGCGGCCGACACCGCCGCGCTGCTGTTGCTGCTGCTGCTGGCGCTGGCGG
CGCGCGCGGACGGCCTGGAGTTCGGCGGCCGCCCGGGCAGTGGGCTCGCTACGCGCGTGGGCGGGCGC
GGCGAGCAGCGCGGAGCTCAGCTTCAGCCTGCGCACCAACGCCACGCGCGCTGCTGCTACCTGGAC
GACGGCGGCGACTGCGACTTCTGGAGCTGCTGCTGGTGGACGGCCGCTGCGGCTGCGCTTACGCTTT
CGTGGCGGAGCCGGCCACGCTGCAGCTGGACACGCGGTGGCCGACGACCGCTGGCAGTGGTGGCTGCT
GACCCGCGACGCGCCGACGCGCTGGCGGTGGACGGCGAGGCCCGCGCCGCGAGGTGCGCTCCAAG
CGGCGGAGATGCAGGTGGCCAGCGACCTGTCGTGGCGGCATCCCGCCGACGTGCGCTCTCGGCGC
TTACGCTGAGCACCGTCAAGTACGAGCCGCCCTCCGCGGCTCTGGCCAACTGAAGTGGGCGAGCG
GCCCCCGCGCTGCTGGCAGCCAGGGCCTGCGCGGCCACCGCCGACCGCTGTGCGCGCCGCGCGC
AACCCCTGCGCAACGGCGGCTCTGCACCGTGTGGCCCCGGCGAGGTGGGCTGCGACTGCAGCCACA
CGGGCTTCGGCGCAAGTCTGCAGCGAAGAGGAGCACCCATGGAAGTCCGGCTCACCTGACGTTAA
CAGCGAAGTAGGGTCTTACTGTTCTCCGAGGGGGGGCCGGGAGAGGAGGCCGGCGATGTGCACCA
CCAACAAAAGGCAAGGAGGAGTTTGTGGCGACCTCAAAGGCAATGAGTCTTCTGCTACGACCTGTCAC
ACAACCCATCCAGAGCAGCACTGATGAGATCACACTGGCCTTCCGCACCTGCAACGCAACGGCCTGAT
GCTGCATACAGGCAAGTCCGCGGACTACGTCAACCTGTCCCTCAAGTCTGGGGTGTCTGGCTGGTCATC
AACCTAGGCTCAGGTGCCTTCGAGGCCCTGTGGAACCCGTCAATGGCAAGTTCAACGACAACGCTGGC
ACGACGTCGGGTCAACCGAACTGCGCCAGCACGCGAGGATTGGACACGCTATGGTAAACAACTGCA
TTATCTGGTGACCATCTCGGTGGACGGATCCTGACCACACAGGCTACACGAGGAGGATTACACCATG
CTGGGCTCTGATGACTTCTTCTACATTTGGGGCAGCCCCAACACAGCTGACCTGCCGGCTCGCCCGTCA
GCAACAACTTTCATGGGCTGCCTCAAGGAGTGGTCTATAAGAACAATGACTTCAAATTGGAATATCCCG
CCTGGCAAAGGAAGGGGACCCCAAGATGAAGTGCAGGGGGACTTGTTCATTCCGCTGTGAGGATGGCT
GCCCTGGACCTGTGACCTTGTAGAGTCCGAGGCTTTGTGGCGCTGCCCGCTGGAGCGCTAAGCGCA
CTGGCTCCATCTCCCTAGACTTCCGCACCACCGAGCCCAATGGGCTGCTGCTCTTACGCCAGGGCCGGC



[View online »](#)

GGCTGGGGGTGGAGCTGGCAGCCACAGCTCTGCTCAGCGGGCCGACTACTTTGCCATGGAGCTATTGGAC
 GGCCACCTCTATCTTCTGCTGGACATGGGATCTGGGGGCATCAAGCTGCGGGCATCCAGCCGCAAGGTCA
 ATGATGGCGAGTGGTGTACGTGGACTTCCAGAGGGATGGGCGAAAAGGCTCCATCTCAGTGAATAGTCG
 CAGCACGCCGTTCTTGGCCACTGGAGACAGCGAGATTCTGGACCTGGAGAGTGAGCTGTACCTGGGCGGT
 CTCCTGAGGGGGCCGGGTGGACCTGCCCTGCCCCAGAGGTGGACAGCAGCACTCCGGGCAGGT
 ACGTGGGCTGTGTGCGGGACCTTTCATAGATGGGCGTAGCCGAGACCTCCGGGGCTGGCTGAGGCTCA
 GGGGGCTGTGGGCTTCCCTTTTGTCCCGGAGACGCTGAAGCAGTGTGCATCTGCCCTGTGCG
 AATGGGGGCGTCTGTGAGAGAGGCCACGGTCTGAGCTACGATGGCTCCATGTACATGAAGATCATGCTGCCTAA
 CGCCATGCACACGGAGGCAGAGGATGTGTCCCTGCGTTTCATGTCCAGCGGGCTACGGACTCATGATG
 GCCACCACTTCCAGGGAGTGTGCCGACACCCTACGCTGGAGCTGGATGGGGGCAGATGAAGCTACTG
 TCAACCTCGACTGCCTGCGCGTGGCTGCGCACCCAGTAAAGGCCCGAAAACGCTGTTTGGGGGCACAA
 GCTCAATGACAATGAGTGGCACACGGTGGGGTGGTCCGGCGTGGCAAGAGCCTGCAGCTGTCTGTGGAC
 AACGTGACTGTGGAGGGACAGATGGCAGGAGCCATATGCGGCTGGAGTCCACAACATTGAGACGGGCA
 TCATGACGGAGCGCGGTTTATCTCCGTGGTGCCTCCAACCTCATCGGGCATCTGAGTGGGCTCGTGTT
 CAATGGCCAGCCCTACATGGACCAAGTGAAGGATGGTGCATCACCTACTGTGAGCTCAATGCTCGCTTT
 GGCTGCGTGCCATCGTGGCCGATCCCGTCACCTTCAAGAGTGCAGCAGCTACCTGGCACTCGCCACGC
 TCCAAGCCTATGCTTCCATGCACCTCTTCTCCAGTTCAGAGCCAGGCCCTGATGGGCTTCTTCTGTT
 CAACTCGGGCAACGGCAATGACTTCATTGTATCGAGCTGGTCAAGGGGTACATCCACTACGTGTTTGC
 CTGGGGAATGGCCGCTCTTGTGAAGGGGAACCTCAGACAAACCAGTCAATGACAACCAGTGGCACAACG
 TGGTGGTGTCCAGGGACCCAGGCAACGTGCACACGCTCAAGATTGACTCCCGACTGTACGCAGCACTC
 CAATGGCGCCCGAAAACCTCGATCTCAAAGGGGAGTTGTACATTGGCGTCTGAGCAAGAATATGTTGAGC
 AACCTGCCCAAGCTGGTGGCTCCCGGATGGCTTTCAGGGCTGCCTGGCCTCAGTGGACCTCAACGGG
 GTCTCCAGACCTCATCGCCGACGCCCTGCACCGCATTGGGCAGGTGGAGAGGGCTGTGATGGCCCCAG
 CACCACCTGCACTGAAGAGTCTGTGCCAACAGGGCGTCTGCTTGCAGCAGTGGGATGGCTTACCTGC
 GACTGCACCATGACTTCTATGGAGGCCCTGTCTGCAATGATCCCGGGACCACATACATCTTTGGGAAGG
 GGGGAGCGCTCATCACCTACACGTGGCCCCCAATGACAGGCCAGCAGCAGGATGGATCGCTGGCCGT
 GGGCTTACAGCACCCAGCGGAGCGTGTGCTGGTGGGGTGGACAGCGCTCCGGCTTGGAGACTAC
 CTGCAGCTGCACATCGACCAGGGCACCGTGGGGTGTATTTAACGTGGGCAGGACGACATTACCATCG
 ACGAGCCCAACGCCATAGTAAGCGACGGCAAATACCACGTGGTGCCTTCACTCGAAGCGCGGCAACGC
 CACCCTGCAGGTGGACAGCTGGCCGGTCAACGAGCGGTACCCGGCAGGAACTTTGATAACGAGCGCTG
 GCGATTGTAGACAGAGAATCCCTACCGGCTTGGTGCAGTAGTATGATGAGTGGCTGCTCGACAAAGGCC
 GCCAGTGAACATCTTCAACAGCCAGGCTGCCATCAAGATCGGGGGCCGGGATCAGGGCCGCCCTTCCA
 GGGCCAGGTGTCCGGCTCTACTACAATGGGCTCAAGGTGCTGGCGCTGGCCGCCGAGAGCGACCCCAAT
 GTGCGGACTGAGGGTACCTGCGCTGGTGGGGGAGGGGCGTCCGTGCTGCTCAGTGGCGAGACCACGG
 CCACCACCTGCTGGTGCATGGCCACCACCATCATGGAGACTACCACCACCATGGCCACTACCACCAC
 GCGCCGGGGCCGCTCCCCCACTGAGGGACAGCACCCAGAACACAGATGACCTGCTGGTGGCTCT
 GCTGAGTGTCAAAGCGATGATGAGGACCTGGAGGAGTGTGAGCCAGTACTGGAGGAGAGTTAATATTGC
 CCATTATCACGGAGGACTCCTTAGACCCCCCTCCCGTGGCCACCCGATCCCCCTTGTGCCCGCCCCC
 TACCTTCTACCCCTTCTCACGGGAGTGGGCGCCACCCAAGACACGCTGCCCGCCCGCGCGCGCCGC
 CCGCCCTCTGGGGCCCGTGCAGGCGGAGCGGGACGACAGCGACTGCGAGGAGCCCATCGAGGCCCTCGG
 GCTTGCCTCCGGGAGGTCTTTGACTCCAGCCTCCCCCCACGGACGACGAGGACTTTTACACCACCTT
 TCCCTGGTACGGACCGCACCCCTCTGTACCCCGCAAACCCGCTCCCCGGCCCAACCTCAGGACA
 GATGGGGCCACGGGCGCCCTGGGGTGTGTTGCCCTCCGCCCGGGCCCAACCTGCCGGCGGGCA
 AAATGAACCACCGAGACCCGCTTACGCCCTGCTGGAGAACCAGCCCTTGGGGCCGGGGCCCCACGTC
 CTTTGGCGCGGAGGCCCTCCCTGCGCCCCGGCGTGACCTCAGCCCCGGCTTCCCCATCTGCC
 ACAGCCAAACCCACAGGGCCTGGGGAGCGGGCCCGCGGGCGCAGTGGAGGTGATCCGGGAGTCCAGCA
 GCACCACGGGATGGTGGTGGGCAATGTGGCGGGCGGGCGCTCTGCATCCTCATCTCCTACGCCAT
 GTATAAGTACCGCAATCGTGTGATGAGGGCTCTACCAGGTGGACCAGAGCCGAAACTACATCAGTAACTCG
 GCCCAGAGCAATGGGGCGGTGGTAAAGAGAAGGCCCGGCTGCCCCCAAGACGCCAGCAAGGCCAAGA
 AGAACAAAGACAAGGAGTATTATGTC

ACGCGTACGCGGCCGCTCGAG - GFP Tag - GTTTAA

Protein Sequence:

>RG219788 representing NM_015080
 Red=Cloning site Green=Tags(s)

MASGSRWRPTPPPLLLLLLLALAARADGLEFGGGPQWARYARWAGAASSGELSFSLRTNATRALLLYLD
 DGGDCDFLELLLVDGRLRLRFTLSAEPATLQLDTPVADDRWHMVLLTRDARRTALAVDGEARAAEVRSK
 RREMQVASDLFVGGIPPDVRLSALTSTVKYEPFRGLLANLKLGERPPALLGSQGLRGATADPLCAPAR
 NPCANGGLCTVLAPGEVGCDCSHTGFGGKFCSEEEHPMEGPAHLTLNSEVGSLLFSEGGAGRGGAGDVHQ
 PTKGKEEFVATFKGNEFFCYDLSHNPIQSSTDEITLAFRTLQRNGLMLHTGKSADYVNLCLKSGAVWLVI
 NLGSGAFEALVEPVNGKFNDAWHDRVTRNLRQHAGIGHAMVNLKHYLVTISVDGILTTTGYTQEDYTM
 LGSDDFFYIGGSPNTADLPGSPVSNFMGCLKDVVYKNNDFKLELSRLAKEGDPKMKLQGDLSFRCEDEVA
 ALDPVTFESPEAFVALPRWSAKRTGSI SLDFRTTEPNGLLLFSQGRRAGGGAGSHSSAQRADYFAMELLD
 GHL YLLLDMGSGGIKL RASSRKVNDGEWCHVDVFRDGRKGSISVNSRSTPFLATGDSEILDLESEL YLGG
 LPEGGRVDLPLPPEVWTAALRAGYVGCVRDLFIDGRSRDLRGLAEAQGAVGVAPFCSRETLKQCASAPCR
 NGGVCREGWNRFCDCIGTGFGRVCEREATVLSYDGS MYMIMLPNAMHTEAEDVSLRFMSQRAYGLMM
 ATTSRESADTLRLELDGGQMKLTVNLDCLRVGCAPSKGPETLFAGHKLNDNEWHTVRVRRGKSLQLSVD
 NVTVEGQMAGAHMRELFHNIETGIMTERRFISVPSNFIHLSGLVFNGQPYMDQCKDGDITYCELNARF
 GLRAIVADPVTFKSRSSYLALATLQAYASMHFFQFKTTAPDGLLLFNSGNGNDFIVIELVKGYIHVYFD
 LGNGPSLMKGNSDKPVNDNQWHNVVSRDPGNVHTLKIDSRTVTQHSNGARNLDLKGELYIGGLSKNMF
 NLPKLVASRDGFQGLASVDLNGRLPDLIADALHRIQVERGCDGPSTTCTEESCANQGVCLQQWDGFTC
 DCTMTSYGGPVCNDPGTTYIFGKGGALITYTWPNDRPSRMDRLAVGFSTHQRSVAVLRVDSASGLGDY
 LQLHIDQGTGVVIFNVGTDDITIDEPNIVSDGKYHVVRFRTRSGGNATLQVDSWPVNERYPAGNFNERL
 AIARQRIPIYRLGRVYDEWLLDKGRQLTIFNSQAATKIGGRDQGRPFQGVSGLYYNGLKVLALAAESDPN
 VRTEGHLRLVGEGPSVLLSAETTATLLADMATTIMETTTTMTATTTTRGRSPTLRDSTTQNTD DLLVAS
 AECPSDDELEECEPSTGGELILPIITEDSLDPPPVA TRSPFVPPPTFY PFLTG VGATQD TLPPAARR
 PPSGGCQAERDDSDCEEPIEASGFASGEVFDSSLPPTDDEDFYTTFPLVTDRTLLSPRKPAPRPNLRT
 DGATGAPGVLFAPSAPAPNLPAGKMNHRDPLQPLENPLGPGAPTSFEPRRPPPLRPGVTSAPGFPHLP
 TANPTGPGERGGP GAVEVIRESSSTTGMVVGIVAAAALCILILLYAMYKYRNRDEGSYQVDQSRNYISNS
 AQSNGAVVKEKAPAAPKTPSKAKKNKDKEYYY

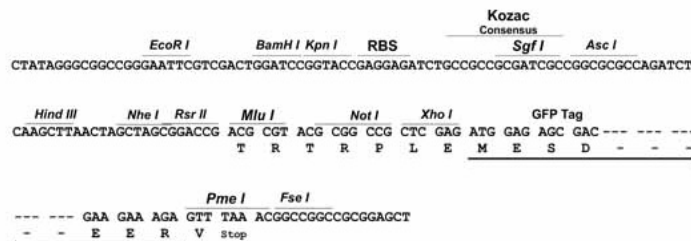
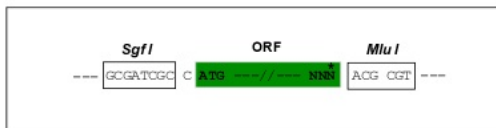
TRTRPLE - GFP Tag - V

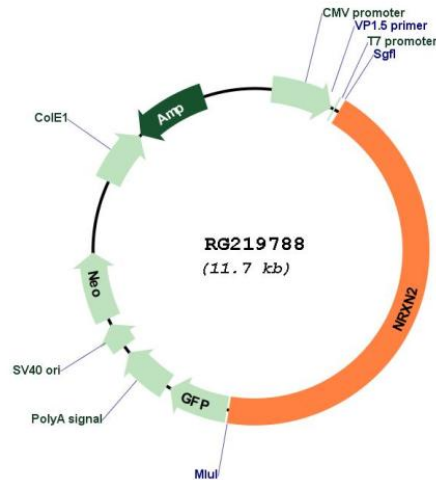
Restriction Sites:

SgfI-MluI

Cloning Scheme:

Cloning sites used for ORF Shutting:



Plasmid Map:


ACCN: NM_015080

ORF Size: 5136 bp

OTI Disclaimer: The molecular sequence of this clone aligns with the gene accession number as a point of reference only. However, individual transcript sequences of the same gene can differ through naturally occurring variations (e.g. polymorphisms), each with its own valid existence. This clone is substantially in agreement with the reference, but a complete review of all prevailing variants is recommended prior to use. [More info](#)

OTI Annotation: This clone was engineered to express the complete ORF with an expression tag. Expression varies depending on the nature of the gene.

Components: The ORF clone is ion-exchange column purified and shipped in a 2D barcoded Matrix tube containing 10ug of transfection-ready, dried plasmid DNA (reconstitute with 100 ul of water).

Reconstitution Method:

1. Centrifuge at 5,000xg for 5min.
2. Carefully open the tube and add 100ul of sterile water to dissolve the DNA.
3. Close the tube and incubate for 10 minutes at room temperature.
4. Briefly vortex the tube and then do a quick spin (less than 5000xg) to concentrate the liquid at the bottom.
5. Store the suspended plasmid at -20°C. The DNA is stable for at least one year from date of shipping when stored at -20°C.

RefSeq: [NM_015080.4](#)

RefSeq Size: 6616 bp

RefSeq ORF: 5139 bp

Locus ID: 9379

UniProt ID: [Q9P2S2](#)

Cytogenetics:	11q13.1
Protein Families:	Druggable Genome, Transmembrane
Protein Pathways:	Cell adhesion molecules (CAMs)

Gene Summary: This gene encodes a member of the neurexin gene family. The products of these genes function as cell adhesion molecules and receptors in the vertebrate nervous system. These genes utilize two promoters. The majority of transcripts are produced from the upstream promoter and encode alpha-neurexin isoforms while a smaller number of transcripts are produced from the downstream promoter and encode beta-neuresin isoforms. The alpha-neurexins contain epidermal growth factor-like (EGF-like) sequences and laminin G domains, and have been shown to interact with neurexophilins. The beta-neurexins lack EGF-like sequences and contain fewer laminin G domains than alpha-neurexins. Alternative splicing and the use of alternative promoters may generate thousands of transcript variants (PMID: 12036300, PMID: 11944992).[provided by RefSeq, Jun 2010]