

Product datasheet for **RG219725**

DDX27 (NM_017895) Human Tagged ORF Clone

Product data:

Product Type:	Expression Plasmids
Product Name:	DDX27 (NM_017895) Human Tagged ORF Clone
Tag:	TurboGFP
Symbol:	DDX27
Synonyms:	dj686N3.1; DRS1; Drs1p; HSPC259; PP3241; RHLP
Mammalian Cell Selection:	Neomycin
Vector:	pCMV6-AC-GFP (PS100010)
E. coli Selection:	Ampicillin (100 ug/mL)



[View online »](#)

ORF Nucleotide Sequence:

>RG219725 representing NM_017895
 Red=Cloning site Blue=ORF Green=Tags(s)

TTTTGTAATACGACTCACTATAGGGCGGCCGGGAATTCGTCGACTGGATCCGGTACCGAGGAGATCTGCC
 GCC**CGCATCGCC**

ATGGTACTTGCCAAAGACGACGAGGAGGCTGCGAAAAGTTAAGGGCCGGACCGCAGGCTGTGCTCGCTT
 CCGGAAGTGGCTTCTGCGACAACATGCTTGCAGCCTCGCTTAATCGGAACCATAGGCGAGGATGACGA
 GGTGCCGGTGGAGCCCGAGTCTGACTCCGGGGACGAGGAAGAGGAGGGGCCATTGTGCTGGCAGACGA
 CAAAAAGCTTTGGGAAGAACCAGTGTGATTTCAACCCTGATTTCTGTTTTCACTGAGAAGGAGGGGA
 CGTACGATGGCAGCTGGGCCCTGGCTGATGTCATGAGCCAACTCAAGAAGAAGAGGGCAGCCACTACATT
 AGATGAGAAGATTGAGAAAGTTCGAAAGAAAAGGAAAACAGAGGATAAAGAAGCCAAAGTCTGGGAAGTTG
 GAAAAGGAGAAAGAAGCAAGGAAGGCTCTGAACCAAGGAGCAGGAAGACCTTCAAGAGAATGATGAGG
 AAGGCTCAGAAGATGAAGCCTCGGAGACTGACTACTCATCAGCTGATGAGAACATCCTCACCAAAGCAGA
 TACTACTCAAAGTAAAGGATCGGAAGAAGAAGAAGAAGAAAGGACAGGAAGCAGGAGGATTTTTTGAAGAT
 GCATCTCAGTACGATGAAAACCTCTCGTTCCAGGACATGAACCTTTCCCGCCTCTCTGAAGGCCATTA
 CAGCCATGGGCTTCAAGCAGCCACCCCGATCCAGAAGGCGTGCATACCTGTGGGTCTATTGGGGAAGGA
 CATCTGTGCTGTGCAGCCACTGGGACAGGTA AAACTGCCGCCTTTGCCCTGCCTGTTTTGGAGCGTCTG
 ATTTATAAACCCCGCCAGGCTCCAGTCAACCCGCGTGTGGTGCTAGTGCCACCCGAGAGCTGGGCATCC
 AGGTGCACTCTGTACCAGACAGCTGGCCAGTTCTGCAACATCACCACTGCCTGGCTGTGGGCGGCTT
 GGATGTGAAGTCTCAGGAAGCAGCTCTTCGGGCAGCGCTGACATCCTCATCGCCACCCAGGCCGGCTC
 ATCGATCACCTCCAACTGCCCTTCTTCCACCTGAGCAGCATCGAGGTGCTCATCTGGACGAGGCTG
 ACAGATGCTGGATGAGTACTTTGAGGAGCAGATGAAGGAGATCATCCGAATGTGTTCCACCACCGCCA
 GACCATGCTCTTCTCGGCCACCATGACAGACGAGGTGAAAGATCTGGCTTCTGTCTCCTTGAAGAATCCT
 GTCGGATATTTGTGAACAGCAACACAGATGTGGCTCCCTTCTGCGGCAGGAGTTCATCCGGATCCGGC
 CTAATCGTGAAGGAGACCGGAAGCCATCGTGGCAGCTTTGTTGACGAGGACCTTCACTGACCATGTGAT
 GCTGTTACGCAAACCAAGAAGCAGGCCACCGCATGCACATCCTCCTGGGGCTCATGGGCTGCAGGTG
 GGTGAGCTCCATGGCACTTGTACAGACGCAGCGGCTGGAGGCCCTCCGGCTTTTAAGGATGAACAGA
 TTGACATCCTCGTGGCCACTGATGTGGCAGCCGTTGACTTGACATTGAGGGGTCAAACCGTAATCAA
 CTTCACAATGCCTAATACCATCAAACATTATGTCCACCGGTGGGGCGAACAGCACGTGCTGGCAGGCT
 GGGCGCTCAGTCTCTGTTGGGAGAAGATGAGCGGAAGATGCTGAAGGAGATTGTAAGCTGCCAAGG
 CCCCTGTGAAGGCCAGGATACTTCCCAAGATGTCATCCTCAAATTCGGGACAAGATTGAGAAAATGGA
 GAAAGATGTGATGCAGTCTGCAGCTAGAGGGGAGGAAAAAGAGATGCAGCAGTCAGAAGCCAGATC
 AATACAGCAAAGCGGCTCCTGGAGAAGGGGAAGGAGGCAGTGGTCCAAGAGCCCGAGAGGAGCTGGTTCC
 AGACCAAAGAAGAGAGGAAGAAGGAGAAAATTGCCAAAGCTCTGCAGGAATTTGACTTGGCCTTAAGAGG
 AAAGAAGAAAAGGAAGAAGTTTATGAAGGATGCCAAAAAAGGGGGAGATGACAGCAGAGGAAAGGTCT
 CAGTTTGAATCCTCAAGGCGCAGATGTTTGTGAACGGCTAGCGAAGAGGAATCGCAGAGCCAAGCGGG
 CCCGAGCAATGCCGAGGAGGAGCCAGTGAAGGCTCTGCCAAGAAGCAAAGCAGGGGAAGAAATCTGT
 ATTTGATGAAGAACTACCAACACAAGCAAGAAGGCCCTGAAACAGTATCGAGCTGGCCCTTCTTTGAA
 GAAAGGAAACAGTTGGCTTGGCCACCCAGAGACGAGGAGGAAACTTTAAATCTAAATCCAGATCAAGA
 GGAGGAAG

ACGCGTACGCGGCCGCTCGAG - GFP Tag - GTTTAA

Protein Sequence: >RG219725 representing NM_017895
Red=Cloning site Green=Tags(s)

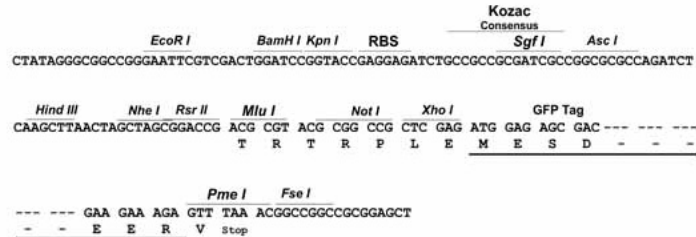
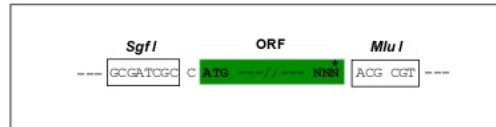
MVLAQRRRGCEKLRAGPQAVLASGSGFCNMLADLGLIGTIGEDDEVPVEPESDSGDEEEEGPIVLGRR
QKALGKNRSADFNPDFVFTEKEGTYDGSWALADVMSQLKKKRAATTLDEKIEKVRKKRKTEDKEAKSGKL
EKEKEAKEGSEPKEQEDLQENDEEGSEDEASETDYSSADENILTKADTLKVKDRKKKKKQGEAGGFED
ASQYDENLSFQDMNLSRPLLKAITAMGFKQPTPIQKACIPVGLLGKDICACAATGTGKTAAFALPVLRL
IYKPRQAPVTRVLVLPTRRELGIQVHSVTRQLAQFCNITTCCLAVGGLDVKSQEAALRAAPDILIATPGR
IDHLHNCPSFHLSSIEVLILDEADRMLDEYFEEQMKEIIRMCSHHRQTMLFSATMTDEVKDLASVSLKNP
VRIFVNSNTDVAPFLRQEFIRIRPNREGDREAIVAALLTRTFTDHSVMLFTQTKKQAHRMHILLGLMGLQV
GELHGNLSQTRLEALRRFKDEQIDILVATDVAARGLDIEGVKTVINFTMPNTIKHYVHRVGRARAGRA
GRSVSLVGEDERKMLKEIVKAAKAPVKARILPQDVILKFRDKIEKMEKDYYAVLQLEAEEKEMQQSEAI
NTAKRLLLEKGEAVVQEPERSWFQTKEEKKEKIAKALQEFDLALRGKKRKKFMKDAKKKGEMTAEERS
QFEILKAQMF AERLAKNRRRAKRARAMPEEPEVRGPAKKQKQKKS VVFEELTNTSKKALKQYRAGPSFE
ERKQLGLPHQRRGGNFKSKSRYKRRK

TRTRPLE - GFP Tag - V

Restriction Sites: Sgfl-MluI

Cloning Scheme:

Cloning sites used for ORF Shutting:



ACCN: NM_017895

ORF Size: 2388 bp

OTI Disclaimer: The molecular sequence of this clone aligns with the gene accession number as a point of reference only. However, individual transcript sequences of the same gene can differ through naturally occurring variations (e.g. polymorphisms), each with its own valid existence. This clone is substantially in agreement with the reference, but a complete review of all prevailing variants is recommended prior to use. [More info](#)

OTI Annotation: This clone was engineered to express the complete ORF with an expression tag. Expression varies depending on the nature of the gene.

Components: The ORF clone is ion-exchange column purified and shipped in a 2D barcoded Matrix tube containing 10ug of transfection-ready, dried plasmid DNA (reconstitute with 100 ul of water).

Reconstitution Method:

1. Centrifuge at 5,000xg for 5min.
2. Carefully open the tube and add 100ul of sterile water to dissolve the DNA.
3. Close the tube and incubate for 10 minutes at room temperature.
4. Briefly vortex the tube and then do a quick spin (less than 5000xg) to concentrate the liquid at the bottom.
5. Store the suspended plasmid at -20°C. The DNA is stable for at least one year from date of shipping when stored at -20°C.

RefSeq: [NM_017895.7](#), [NP_060365.7](#)

RefSeq Size: 2657 bp

RefSeq ORF: 2298 bp

Locus ID: 55661

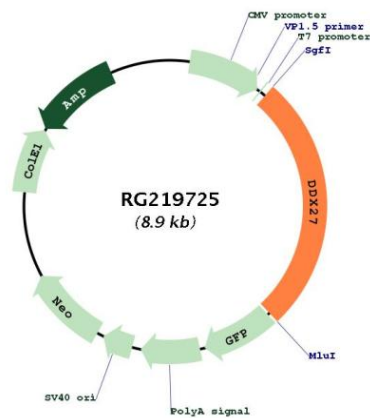
UniProt ID: [Q96GQ7](#)

Cytogenetics: 20q13.13

Domains: DEAD, helicase_C

Gene Summary: DEAD box proteins, characterized by the conserved motif Asp-Glu-Ala-Asp (DEAD), are putative RNA helicases. They are implicated in a number of cellular processes involving alteration of RNA secondary structure such as translation initiation, nuclear and mitochondrial splicing, and ribosome and spliceosome assembly. Based on their distribution patterns, some members of this family are believed to be involved in embryogenesis, spermatogenesis, and cellular growth and division. This gene encodes a DEAD box protein involved in the processing of 5.8S and 28S ribosomal RNAs. More specifically, the encoded protein localizes to the nucleolus, where it interacts with the PeBoW complex to ensure proper 3' end formation of 47S rRNA. [provided by RefSeq, Jan 2017]

Product images:



Circular map for RG219725