

Product datasheet for **RG219708**

Bax inhibitor 1 (TMBIM6) (NM_001098576) Human Tagged ORF Clone

Product data:

Product Type:	Expression Plasmids
Product Name:	Bax inhibitor 1 (TMBIM6) (NM_001098576) Human Tagged ORF Clone
Tag:	TurboGFP
Symbol:	Bax inhibitor 1
Synonyms:	BAXI1; BI-1; TEGT
Mammalian Cell Selection:	Neomycin
Vector:	pCMV6-AC-GFP (PS100010)
E. coli Selection:	Ampicillin (100 ug/mL)
ORF Nucleotide Sequence:	>RG219708 representing NM_001098576 Red=Cloning site Blue=ORF Green=Tags(s)

TTTTGTAATACGACTCACTATAGGGCGGCCGGAATTCGTCGACTGGATCCGGTACCGAGGAGATCTGCC
GCC**CGGATCGCC**

ATGTCACACTCCTCTGTGACACGCGAGGCTCCTCAGTTACTTAGCCAACGGCAGAGGCGGGAAGTGAGAG
GAGTCTGGGGCTGGGGCTGCCTTCCAGGCCACGGGGCGGCCCGCTCTTTTCGGATTGGTTACCTTTGG
GCAGAGTGGAGACTGCTGCACGGACTCTGGAACCATGAACATATTTGATCGAAAGATCAACTTTGATGCG
CTTTTAAATTTTCTCATATAACCCCGTCAACGCAGCAGCACCTGAAGAAGGTCTATGCAAGTTTGCC
TTTGTATGTTTGTGGCGCTGCAGGGCCCTATGTCCATATGGTCACTCATTTCATTTCAGGCTGGCCTGCT
GTCTGCCTTGGGCTCCCTGATATTGATGATTTGGCTGATGGCAACACCTCATAGCCATGAACTGAACAG
AAAAGACTGGGACTTCTTGTGATTTGCATTCCTTACAGGAGTTGGCCTGGGCCCTGCCCTGGAGTTTT
GTATTGCTGTCAACCCAGCATCCTTCCACTGCTTTCATGGGCACGGCAATGATCTTTACCTGCTTCAC
CCTCAGTGCACCTATGCCAGGGCCGTAGCTACCTCTTCTGGGAGGTATCTTGATGTCAGCCCTGAGC
TTGTTGCTTTTGTCTTCCCTGGGGAATGTTTTCTTTGGATCCATTTGGCTTTTCCAGGCAAACCTGTATG
TGGGACTGGTGGTCATGTGTGGCTTCGTCCTTTTGGTACTCAACTCATTATTGAAAAGGCCGAACATGG
AGATCAAGATTATCTGGCACTGCATTGATCTCTTCTTAGATTTTATTACTGTCTTCAGAAAACATCATG
ATGATCCTGGCCATGAATGAAAAGGATAAGAAGAAAGAGAAGAAA

ACGCGTACGCGGCCGCTCGAG - GFP Tag - GTTTAA



[View online »](#)

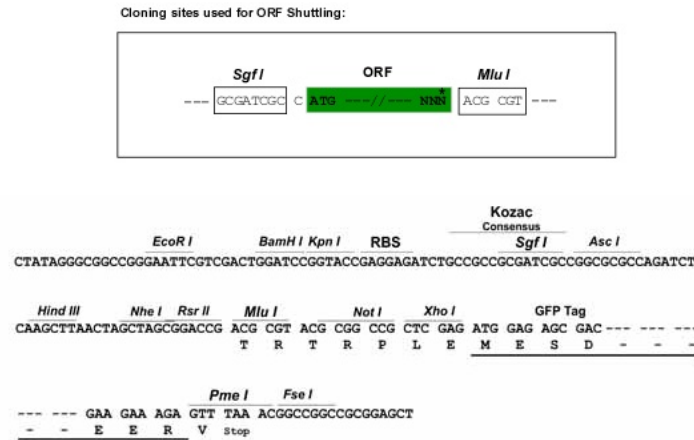
Protein Sequence: >RG219708 representing NM_001098576
Red=Cloning site Green=Tags(s)

MSHSSVTREAPQLLSQRQRREVRGVWGWGCLPGRGGPALFGLVTFGQSGDCCTDSGTMNIFDRKINFDA
 LLKFSHITPSTQQLKKVYASFALCMFVAAAGAYVHMVTHFIQAGLLSALGSLILMIWLMATPHSHETEQ
 KRLGLLAGFAFLTGVGLGPALEFCIAVNPSILPTAFMGTAMIFTCFTLSALYARRRSYFLGGILMSALS
 LLLLSSLGNVFFGSIWLFQANLYVGLVVMCGFVLFDTQLIEKAEHGDQDYIWHCIDLFLDFITVFRKLM
 MILAMNEKDKKKEKK

TRTRPLE - GFP Tag - V

Restriction Sites: SgfI-MluI

Cloning Scheme:



ACCN: NM_001098576

ORF Size: 885 bp

OTI Disclaimer: The molecular sequence of this clone aligns with the gene accession number as a point of reference only. However, individual transcript sequences of the same gene can differ through naturally occurring variations (e.g. polymorphisms), each with its own valid existence. This clone is substantially in agreement with the reference, but a complete review of all prevailing variants is recommended prior to use. [More info](#)

OTI Annotation: This clone was engineered to express the complete ORF with an expression tag. Expression varies depending on the nature of the gene.

Components: The ORF clone is ion-exchange column purified and shipped in a 2D barcoded Matrix tube containing 10ug of transfection-ready, dried plasmid DNA (reconstitute with 100 ul of water).

Reconstitution Method:

1. Centrifuge at 5,000xg for 5min.
2. Carefully open the tube and add 100ul of sterile water to dissolve the DNA.
3. Close the tube and incubate for 10 minutes at room temperature.
4. Briefly vortex the tube and then do a quick spin (less than 5000xg) to concentrate the liquid at the bottom.
5. Store the suspended plasmid at -20°C. The DNA is stable for at least one year from date of shipping when stored at -20°C.

RefSeq: [NM_001098576.1](#), [NP_001092046.1](#)

RefSeq Size: 3255 bp

RefSeq ORF: 888 bp

Locus ID: 7009

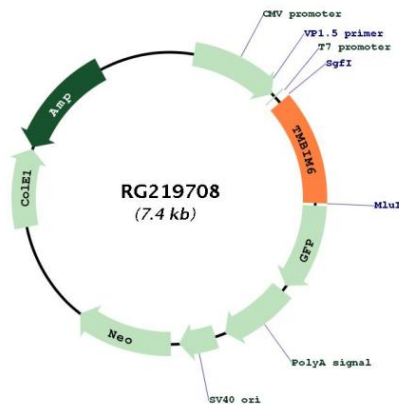
UniProt ID: [P55061](#)

Cytogenetics: 12q13.12

Protein Families: Druggable Genome, Transmembrane

Gene Summary: Suppressor of apoptosis (PubMed:21075086). Modulates unfolded protein response signaling (PubMed:21075086). Modulates ER calcium homeostasis by acting as a calcium-leak channel (PubMed:22128171). Negatively regulates autophagy and autophagosome formation, especially during periods of nutrient deprivation, and reduces cell survival during starvation (By similarity).[UniProtKB/Swiss-Prot Function]

Product images:



Circular map for RG219708