

Product datasheet for **RG219703**

HNF4 gamma (HNF4G) (NM_004133) Human Tagged ORF Clone

Product data:

Product Type:	Expression Plasmids
Product Name:	HNF4 gamma (HNF4G) (NM_004133) Human Tagged ORF Clone
Tag:	TurboGFP
Symbol:	HNF4 gamma
Synonyms:	NR2A2; NR2A3
Mammalian Cell Selection:	Neomycin
Vector:	pCMV6-AC-GFP (PS100010)
E. coli Selection:	Ampicillin (100 ug/mL)



[View online »](#)

ORF Nucleotide Sequence:

>RG219703 representing NM_004133
 Red=Cloning site Blue=ORF Green=Tags(s)

TTTTGTAATACGACTCACTATAGGGCGGCCGGAATTCGTCGACTGGATCCGGTACCGAGGAGATCTGCC
 GCC**CGGATCGCC**

ATGGACATGGCAAATTACAGTGAAGTTTTGGACCAACTTACACAACCTTTGGAGTTGAACTATGCAGA
 TTCTATATAATCAAGTATAGTTCTGCCCCAGAGACAAGTATGAATACCACAGACAACGGTGTCAACTG
 TCTGTGTGCTATCTGTGGGACAGAGCAACAGGAAAACTATGGGGCATCCAGCTGTGATGGGTGCAAG
 GGTTCCTCAGACGCAGCATTCTGAAGAGTCACGTTTATTCTTGCAGTTTCAAGTGGCAATGTGTTGTTG
 ACAAGGACAAAAGGAATCAATGTAGATATTGTCGATTAAGAAAGTGTGTTAGAGCGGGAATGAAAAAGA
 AGCTGTACAAAATGAACGTGACAGAATAAGCACCAGAAGAAGCACATTTGATGGCAGCAACATCCCTCC
 ATTAACACACTGGCACAAGCTGAAGTTCGGTCTCGCCAGATCTCAGTCTCAAGCCCTGGGCAAGCACTG
 ACATAAACGTTAAGAAAATTGCAAGTATTGGTGTGTCTGTGAATCTATGAAACAGCAGCTCTTAGTCTT
 GGTGGAATGGGCTAAATATATTCCTGCCTTCTGTGAATTACCATTGGATGATCAGGTGGCACTGTTGAGA
 GCTCACGCAGGGGAGCACTTACTGCTTGGAGCTACAAAGAGATCCATGATGTATAAAGATATTTTGCCTT
 TGGGAAACAACATGTTATTCACCGCAACAGCTGTGAAGTTGAGATTAGCCGTGTGGCAATCGTGTCTT
 AGATGAGCTGGTTAGACCATTTCAAGAAATCCAGATTGATGACAAATGAGTATGCTTGTGTTAAAGGCAATT
 GTATTTTTTGTATCCAGATGCAAAAGGGCTAAGCGATCCAGTAAAAATTAAGAACATGAGGTTCCAAGTGC
 AGATCGGTTTGGAGGACTACATCAATGATCGGCAGTATGACTCCCGGGGGAGGTTTGGAGAGTTGCTTCT
 GCTCCTGCCACACTGCAGAGCATCACGTGGCAATGATTGAGCAAAACAGTTTGTAACTTTTTGGG
 ATGGTTAAAATTGACAATCTACTTCAGGAAATGCTATTAGGTGGGCTTCCAATGATGGCAGTCACTCC
 ATCATCCAATGCATCCACATTTGTCTCAAGACCATAACTGGACAACTATACTTTTAGTCCCATGTC
 AACACTGGTTTATGCAGACCAGATCTCAACTCCTGAAACCCCACTCCCTTCCCCACCACAAGGCTCTGGG
 CAAGAACAGTACAAAATAGCTGCAAAACCAAGCATCAGTCATTTACACCAGCATCTCTCCAAACAAAAGC
 AATTG

ACGCGTACGCGGCCGCTCGAG - GFP Tag - GTTTAA

Protein Sequence:

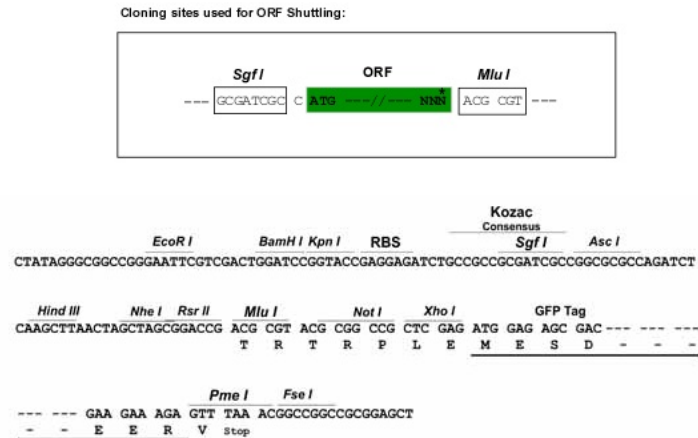
>RG219703 representing NM_004133
 Red=Cloning site Green=Tags(s)

MDMANYSEVLDPYTTLEFETMQILYNSSDSSAPETSMNTTDNGVNCLCAICGDRATGKHYGASSCDGCK
 GFFRRSIRKSHVYSCRFSRQCVDKDKRNQCRYCRLRKCFRAGMKKEAVQNERDRISTRSTFDGNSNIPS
 INTLAQAEVRSRQISVSSPGSSDINVKKIASIGDVCESMKQQLLVLEWAKYIPAFCELPLDDQVALLR
 AHAGEHLLLGATKRSMYKDILLGNYYVIHRNSCEVEISRANRVLDLVRPFQEIQIDDNEYACLKAI
 VFFDPAKGLSDPVKIKNMRQVQIGLEDYINDRQYDSRGRFGELLLLLPTLQSIWQMIQIQFVKLFG
 MYKIDNLLQEMLLGGASNDGSHLHHPMHPHLSQDPLTGQTIILLGPMSTLVHADQISTPETPLPSPQSGS
 QEYKIAANQASVISHQLSKQQL

TRTRPLE - GFP Tag - V

Restriction Sites:

SgfI-MluI

Cloning Scheme:


ACCN: NM_004133

ORF Size: 1335 bp

OTI Disclaimer: The molecular sequence of this clone aligns with the gene accession number as a point of reference only. However, individual transcript sequences of the same gene can differ through naturally occurring variations (e.g. polymorphisms), each with its own valid existence. This clone is substantially in agreement with the reference, but a complete review of all prevailing variants is recommended prior to use. [More info](#)

OTI Annotation: This clone was engineered to express the complete ORF with an expression tag. Expression varies depending on the nature of the gene.

Components: The ORF clone is ion-exchange column purified and shipped in a 2D barcoded Matrix tube containing 10ug of transfection-ready, dried plasmid DNA (reconstitute with 100 ul of water).

Reconstitution Method:

1. Centrifuge at 5,000xg for 5min.
2. Carefully open the tube and add 100ul of sterile water to dissolve the DNA.
3. Close the tube and incubate for 10 minutes at room temperature.
4. Briefly vortex the tube and then do a quick spin (less than 5000xg) to concentrate the liquid at the bottom.
5. Store the suspended plasmid at -20°C. The DNA is stable for at least one year from date of shipping when stored at -20°C.

RefSeq: [NM_004133.4](#), [NP_004124.4](#)

RefSeq Size: 4101 bp

RefSeq ORF: 1368 bp

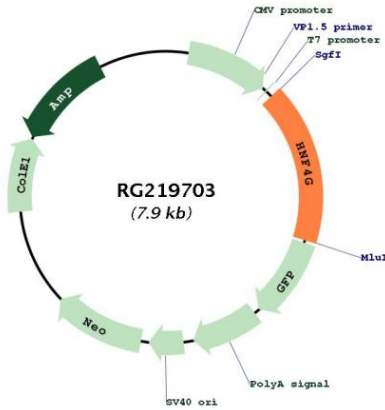
Locus ID: 3174

UniProt ID: [Q14541](#)

Cytogenetics: 8q21.13

Protein Families: Druggable Genome, Nuclear Hormone Receptor, Transcription Factors
Protein Pathways: Maturity onset diabetes of the young
Gene Summary: Transcription factor. Has a lower transcription activation potential than HNF4-alpha. [UniProtKB/Swiss-Prot Function]

Product images:



Circular map for RG219703