

Product datasheet for **RG219698**

SLC6A6 (NM_003043) Human Tagged ORF Clone

Product data:

Product Type:	Expression Plasmids
Product Name:	SLC6A6 (NM_003043) Human Tagged ORF Clone
Tag:	TurboGFP
Symbol:	SLC6A6
Synonyms:	TAUT
Mammalian Cell Selection:	Neomycin
Vector:	pCMV6-AC-GFP (PS100010)
E. coli Selection:	Ampicillin (100 ug/mL)



[View online »](#)

ORF Nucleotide Sequence:

>RG219698 representing NM_003043
 Red=Cloning site Blue=ORF Green=Tags(s)

TTTTGTAATACGACTCACTATAGGGCGGCCGGAATTCGTCGACTGGATCCGGTACCGAGGAGATCTGCC
 GCC**GCGATCGCC**

ATGGCCACCAAGGAGAAGCTGCAGTGTCTGAAAGATTTCCACAAGGACATCCTGAAGCCCTCACCAGGGA
 AGAGCCCAGGCACGCGGCTGAGGACGAGGCTGAGGGAAAACCTCCGCAGAGGGAGAAGTGGTCTAGCAA
 GATCGACTTTGTCTCTCTGTGGCTGGCGGCTTCGTGGGCTTGGGCAACGCTCGCGCTTCCCGTACCTC
 TGCTACAAGAATGGTGGAGGTGCGTTTCTCATACCGTATTTATTTCTGTTTGGGAGCGGCTGCCTG
 TGTTTTTCTTGGAGATCATCATAGGCCAGTACACCTCTGAAGGGGGCATCACCTGCTGGGAAAAGATCTG
 CCCCTTGTCTCTGGTATCGGCTATGCCTCCGTTGTAATTGTGTCCCTCCTGAATGTCTACTACATCGTC
 ATCCTGGCCTGGCCACATACTACCTGTCCAGTCTCCAGAAGGAGCTGCCCTGGGCACACTGCAACC
 ACAGCTGGAACACACCTCACTGCATGGAGGACACCATGCGCAAGAACAAGAGTGTCTGGATCACCATCAG
 CTCACCAACTTACCTCCCCTGTCATCGAGTTCTGGGAGCGCAACGTGCTGAGCTTGCCCTGGAATC
 GACCACCCAGGCTCTCTGAAATGGGACCTCGCTCTCTGCCTTCTTTAGTCTGGCTAGTGTGTTTCTTCT
 GCATCTGGAAGGGCGTCAAGTCCACTGGGAAGGTCGTCTACTTCACAGCCACTTTTCCATTCCGCATGCT
 CCTGGTGTCTGGTCCGAGGGCTGACGCTGCCGGGCGGGGCGCAGGCATCAAGTTCTATCTGTATCCT
 GACATCACCCGCCTTGGAGCCACAGGTGTGGATTGACGCTGGGACTCAGATAATCTTCTTTATGCCA
 TCTGCCTGGGGCTATGACCTCGCTGGGGAGCTACAACAAGTACAAGTAACTCGTACAGGGACTGTAT
 GCTGCTGGGATGCCTGAACAGTGGTACCAGTTTGTGTCTGGCTTCGCAATTTTTTCCATCCTGGGCTTC
 ATGGCACAAGAGCAAGGGGTGGACATTGCTGATGGCTGAGTCAGGTCCTGGCCTGGCCTCATTGCCT
 ACCCAAAGCTGTGACAATGATGCCCTGCCACATTTTGGTCCATTCTTTTTTTTATTATGCTTCTTCTT
 GCTTGGACTGGATAGCCAGTTTGTGAAGTTGAAGGACAGATCACATCCTTGGTTGATCTTACCATCC
 TTCTTAAGGAAGGTTATCGTCGGGAAATCTTCATCGCCTTCGTGTGTAGCATCAGCTACCTGCTGGGGC
 TGACGATGGTACGAGGGTGGCATGTATGTGTTTTCAGCTCTTTGACTACTATGCAGCTAGCGGTGTATG
 CCTTTTGTGGTTGCATTCTTTGAATGTTTTGTTATTGCCTGGATATATGGAGGTGATAACCTTTATGAT
 GGTATTGAGGACATGATTGGCTATCGGCCCGGGCCCTGGATGAAGTACAGCTGGGCTGTGATCACTCCAG
 TTCTCTGTGTTGGATGTTTCATCTTCTCGCTCGTCAAGTACGTACCCCTGACCTACAACAAAACATACGT
 GTACCCCAACTGGCCATTGGGCTGGGCTGGAGCCTGGCCCTTCTCCATGCTCTGCGTCCCTTGGTC
 ATCGTCATCCGCCTCTGCCAGACTGAGGGGCCGTTCTTGTGAGAGTCAAGTACCTGCTGACCCCAAGGG
 AACCCAACCGCTGGGCTGTGGAGCGGAGGGAGCCACACCTTACAACCTCTCGCACCGTCATGAACGGCGC
 TCTCGTAAACCGACCCACATCATTGTGGAGACCATGATG

ACGCGTACGCGGCCGCTCGAG – GFP Tag – GTTTAA

Protein Sequence:

>RG219698 representing NM_003043
 Red=Cloning site Green=Tags(s)

MATKEKLQCLKDFHKDILKPSPGKSPGTRPEDEAEGKPPQREKWSKIDFVLSVAGGFVGLGNVWRFPYL
 CYKNGGGAFLIPYFIFLFGSGLPVFFLEIIIGQYTSEGGITCWEKICPLFSGIGYASVVIIVSLLNVYYIV
 ILAWATYYLFSQKELPWAHCNHSWNTPHCMEDTMRKNKSVWITISSTNFTSPVIEFWERNVLSLSPGI
 DHPGSLKWDLALCLLLVWLVCFCIWKGVSTGKVVYFTATFPFAMLLVLLVRGLTLPGAGAGIKFYLYP
 DITRLEDPOVWIDAGTQIFFSYAICLGAMTSLGSYNKYKNSYRDCMLLGLNSGTSFVSGFAIFSILGF
 MAQEQQVDIADVAESGPLAFIAYPKAVTMMPLPTFWSILFFIMLLLLGLDSQFVEVEGQITSLVDLYPS
 FLRKGYRREIFIAFVCSISYLLGLTMVTEGGMYVQLFDYYAASGVCLLWVAFFECFVIAWIYGGDNLYD
 GIEDMIGYRPGPVMKYSWAVITPVLCVGCIFISLVKYVPLTYNKTYVYPNWAIGLWLSLSSMLCVPLV
 IVIRLCQTEGPFLVRVKYLLTPREPNRWAVEREGATPYNRSRTVMNGALVKPHTHIIIVETMM

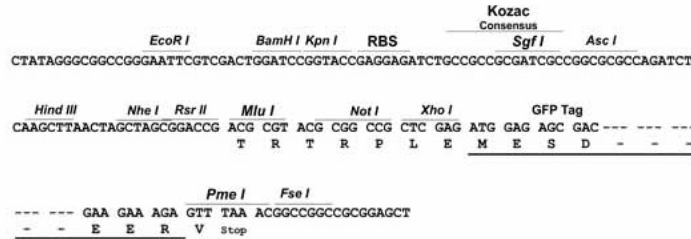
TRTRPLE – GFP Tag – V

Restriction Sites:

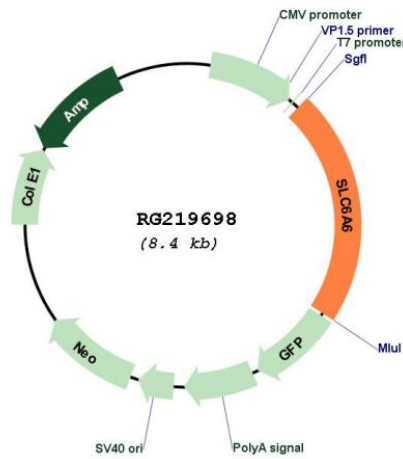
SgfI-MluI

Cloning Scheme:

Cloning sites used for ORF Shutting:



Plasmid Map:



ACCN: NM_003043
 ORF Size: 1860 bp

OTI Disclaimer:	The molecular sequence of this clone aligns with the gene accession number as a point of reference only. However, individual transcript sequences of the same gene can differ through naturally occurring variations (e.g. polymorphisms), each with its own valid existence. This clone is substantially in agreement with the reference, but a complete review of all prevailing variants is recommended prior to use. More info
OTI Annotation:	This clone was engineered to express the complete ORF with an expression tag. Expression varies depending on the nature of the gene.
Components:	The ORF clone is ion-exchange column purified and shipped in a 2D barcoded Matrix tube containing 10ug of transfection-ready, dried plasmid DNA (reconstitute with 100 ul of water).
Reconstitution Method:	<ol style="list-style-type: none">1. Centrifuge at 5,000xg for 5min.2. Carefully open the tube and add 100ul of sterile water to dissolve the DNA.3. Close the tube and incubate for 10 minutes at room temperature.4. Briefly vortex the tube and then do a quick spin (less than 5000xg) to concentrate the liquid at the bottom.5. Store the suspended plasmid at -20°C. The DNA is stable for at least one year from date of shipping when stored at -20°C.
RefSeq:	NM_003043.5 , NP_003034.2
RefSeq Size:	4627 bp
RefSeq ORF:	1863 bp
Locus ID:	6533
UniProt ID:	P31641
Cytogenetics:	3p25.1
Domains:	SNF
Protein Families:	Druggable Genome, Transmembrane
Gene Summary:	This gene encodes a multi-pass membrane protein that is a member of a family of sodium and chloride-ion dependent transporters. The encoded protein transports taurine and beta-alanine. There is a pseudogene for this gene on chromosome 21. Alternative splicing results in multiple transcript variants. [provided by RefSeq, May 2013]