

Product datasheet for **RG219689**

Galectin 10 (CLC) (NM_001828) Human Tagged ORF Clone

Product data:

Product Type: Expression Plasmids
Product Name: Galectin 10 (CLC) (NM_001828) Human Tagged ORF Clone
Tag: TurboGFP
Symbol: Galectin 10
Synonyms: Gal-10; GAL10; LGALS10; LGALS10A; LPPL_HUMAN
Mammalian Cell Selection: Neomycin
Vector: pCMV6-AC-GFP (PS100010)
E. coli Selection: Ampicillin (100 ug/mL)
ORF Nucleotide Sequence: >RG219689 representing NM_001828
 Red=Cloning site Blue=ORF Green=Tags(s)

TTTTGTAATACGACTCACTATAGGGCGGCCGGAATTCGTCGACTGGATCCGGTACCGAGGAGATCTGCC
GCC**CGATCGCC**

ATGTCCCTGCTACCCGTGCCATACACAGAGGCTGCCTCTTTGTCTACTGGTTCTACTGTGACAATCAAAG
GGCGACCCTTGTCTGTTTCTTGAATGAACCATATCTGCAGGTGGATTTCCACACTGAGATGAAGGAGGA
ATCAGACATTGTCTTCCATTTCCAAGTGTGCTTTGGTCGTCGTGGTTCATGAACAGCCGTGAGTATGGG
GCCTGGAAGCAGCAGGTGAATCCAAGAACATGCCCTTTCAGGATGGCCAAGAATTTGAAGTGAAGTATCT
CAGTGCTGCCAGATAAGTACCAGGTAATGGTCAATGGCCAATCCTTTACACCTTTGACCATAGAATCAA
GCCTGAGGCTGTGAAGATGGTGAAGTGTGGAGAGATATCTCCCTGACCAAATTTAATGTCAGCTATTTA
AAGAGA

ACGCGTACGCGGCCGCTCGAG - GFP Tag - GTTTAA

Protein Sequence: >RG219689 representing NM_001828
 Red=Cloning site Green=Tags(s)

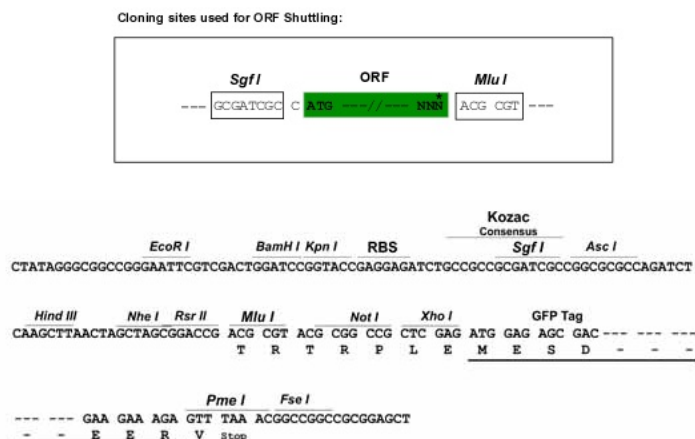
MSLLPVPYTEAASLSTGSTVTIKRPLVCFLEPFLYQVDFHTEMKEESDIVFHFQVCFGRRVVMNSREYG
AWKQQVESKNMPFQDQGEFELSISVLPDKYQVMVNGQSSYTFDHRKPEAVKMQVWRDISLTKFNVSYL
KR

TRTRPLE - GFP Tag - V

Restriction Sites: Sgfl-MluI



[View online »](#)

Cloning Scheme:


ACCN: NM_001828

ORF Size: 426 bp

OTI Disclaimer: The molecular sequence of this clone aligns with the gene accession number as a point of reference only. However, individual transcript sequences of the same gene can differ through naturally occurring variations (e.g. polymorphisms), each with its own valid existence. This clone is substantially in agreement with the reference, but a complete review of all prevailing variants is recommended prior to use. [More info](#)

OTI Annotation: This clone was engineered to express the complete ORF with an expression tag. Expression varies depending on the nature of the gene.

Components: The ORF clone is ion-exchange column purified and shipped in a 2D barcoded Matrix tube containing 10ug of transfection-ready, dried plasmid DNA (reconstitute with 100 ul of water).

Reconstitution Method:

1. Centrifuge at 5,000xg for 5min.
2. Carefully open the tube and add 100ul of sterile water to dissolve the DNA.
3. Close the tube and incubate for 10 minutes at room temperature.
4. Briefly vortex the tube and then do a quick spin (less than 5000xg) to concentrate the liquid at the bottom.
5. Store the suspended plasmid at -20°C. The DNA is stable for at least one year from date of shipping when stored at -20°C.

RefSeq: [NM_001828.3](#)

RefSeq Size: 641 bp

RefSeq ORF: 429 bp

Locus ID: 1178

UniProt ID: [Q05315](#)

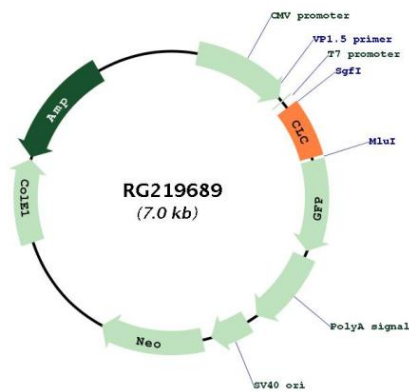
Cytogenetics: 19q13.2

Domains: Gal-bind_lectin

Protein Families: Secreted Protein

Gene Summary: Lysophospholipases are enzymes that act on biological membranes to regulate the multifunctional lysophospholipids. The protein encoded by this gene is a lysophospholipase expressed in eosinophils and basophils. It hydrolyzes lysophosphatidylcholine to glycerophosphocholine and a free fatty acid. This protein may possess carbohydrate or IgE-binding activities. It is both structurally and functionally related to the galectin family of beta-galactoside binding proteins. It may be associated with inflammation and some myeloid leukemias. [provided by RefSeq, Jul 2008]

Product images:



Circular map for RG219689