

Product datasheet for **RG219679**

BRCA1 (NM_007294) Human Tagged ORF Clone

Product data:

Product Type:	Expression Plasmids
Product Name:	BRCA1 (NM_007294) Human Tagged ORF Clone
Tag:	TurboGFP
Symbol:	BRCA1
Synonyms:	BRCA1; BRCC1; BROVCA1; FANCS; IRIS; PNCA4; PPP1R53; PSCP; RNF53
Mammalian Cell Selection:	Neomycin
Vector:	pCMV6-AC-GFP (PS100010)
E. coli Selection:	Ampicillin (100 ug/mL)
ORF Nucleotide Sequence:	>RG219679 representing NM_007294 Red=Cloning site Blue=ORF Green=Tags(s)

TTTTGTAATACGACTCACTATAGGGCGGCCGGAATTCGTCGACTGGATCCGGTACCGAGGAGATCTGCC
GCC**CGATCGCC**

ATGGATTTATCTGCTCTTCGCGTTGAAGAAGTACAAAATGTCATTAATGCTATGCAGAAAATCTTAGAGT
GTCCCATCTGTCTGGAGTTGATCAAGGAACCTGTCTCCACAAAGTGTGACCACATATTTTGCAAATTTTG
CATGCTGAACTTCTCAACCAGAAGAAAGGGCCTTACAGTGTCTTTATGTAAGAATGATATAACCAA
AGGAGCCTACAAGAAAGTACGAGATTTAGTCAACTTGTGAAGAGCTATTGAAAAATTTGTGCTTTTC
AGCTTGACACAGTTTGGAGTATGCAAACAGCTATAATTTTGAAAAAGGAAAAAATACTCTCCTGAACA
TCTAAAAGATGAAGTTTCTATCATCCAAAGTATGGGCTACAGAAACCGTGCCAAAAGACTTCTACAGAGT
GAACCCGAAAATCCTTCTTGCAGGAAACAGTCTCAGTGTCCAACCTCTAACCTTGAAGTGTGAGAA
CTCTGAGGACAAAAGCAGCGGATACAACCTCAAAGACGCTGTCTACATTGAATGGGATCTGATTCTTC
TGAAGTACCGTTAATAAGGCAACTTATTGCAAGTGTGGGAGATCAAGAATTGTTACAAATCACCCCTCAA
GGAACAGGGATGAAATCAGTTTGGATTCTGCAAAAAGGCTGCTTGTGAATTTTCTGAGACGGATGTA
CAAATACTGAACATCATCAACCCAGTAAATGATTTGAACCCACTGAGAAGCGTGCAGCTGAGAGGCA
TCCAGAAAAGTATCAGGGTAGTTCTGTTCAAACCTGCATGTGGAGCCATGTGGCAGAAATACTCATGCC
AGCTCATTACAGCATGAGAACAGCAGTTTATTACTCACTAAAGACAGAATGAATGTAGAAAAGGCTGAAT
TCTGTAATAAAAAGCAAACAGCCTGGCTTAGCAAGGAGCCAACATAACAGATGGGCTGGAAGTAAGGAAAC
ATGTAATGATAGCGGACTCCCAGCACAGAAAAAAGGTAGATCTGAATGCTGATCCCCTGTGTGAGAGA
AAAGAATGGAATAAGCAGAACTGCCATGCTCAGAGAATCCTAGAGATACTGAAGATGTTCTTGATAA
CACTAAATAGCAGCATTAGAAAAGTTAATGAGTGGTTTTCCAGAAGTATGAACTGTTAGGTTCTGATGA
CTCACATGATGGGAGTCTGAATCAAATGCCAAAGTAGCTGATGTATTGGACGTTCTAAATGAGGTAGAT
GAATATTCTGGTTCTTCCAGAGAAAATAGACTTACTGGCCAGTATCCTCATGAGGCTTTAATATGTA
GTGAAAGAGTTCACTCCAAATCAGTAGAGAGTAATATTGAAGACAAAATATTTGGGAAAACCTATCGGAA
GAAGGCAAGCCTCCCAACTTAAGCCATGTAACGAAAATCTAATTATAGGAGCATTGTTACTGAGCCA



[View online »](#)

CAGATAATACAAGAGCGTCCCCTCACAAATAAATTAAGCGTAAAAGGAGACCTACATCAGGCCTTCATC
 CTGAGGATTTTATCAAGAAAGCAGATTTGGCAGTTCAAAAGACTCCTGAAATGATAAATCAGGGAACATA
 CCAAACGGAGCAGAATGGTCAAGTGATGAATTTACTAATAGTGGTCATGAGAATAAAACAAAAGGTGAT
 TCTATTCAGAATGAGAAAAATCCTAACCAATAGAATCACTCGAAAAAGAATCTGCTTTCAAACGAAAG
 CTGAACCTATAAGCAGCAGTATAAGCAATATGGAACCTCGAATTAATATCCACAATTCAAAAGCACCTAA
 AAAGAATAGGCTGAGGAGGAAGTCTTCTACCAGGCATATTCATGCGCTTGAAGTGTAGTGTAGTGTAGTGT
 CTAAGCCACCTAATTGTACTGAATTTGCAAATGATAGTTGTTCTAGCAGTGAAGAGATAAAGAAAAAAA
 AGTACAACCAAAATGCCAGTCAAGCACAGCAGAAAACCTACAACCTCATGGAAGGTAAAGAACCTGCAACTGG
 AGCCAAGAAGAGTAACAAGCCAAATGAACAGACAAGTAAAAGACATGACAGTGATACTTTCCAGAGCTG
 AAGTTAACAAATGCACCTGGTCTTTTACTAAGTGTTCAAATACCAGTGAACCTAAAGAATTTGTCAATC
 CTAGCCTTCCAAGAGAAGAAAAAGAAGAGAACTAGAAACAGTTAAAGTGTCTAATAATGCTGAAGACCC
 CAAAGATCTCATGTTAAGTGGAGAAAGGTTTTGCAAACCTGAAAGATCTGTAGAGAGTAGCAGTATTTCA
 CTGGTACCTGGTACTGATTATGGCACTCAGGAAAGTATCTCGTTACTGGAAGTTAGCACTCTAGGGAAGG
 CAAAAACAGAACCAATAAATGTGTGAGTCAGTGTGCAGCATTGAAAACCCCAAGGACTAATTCATGG
 TTGTTCCAAAGATAATAGAAATGACACAGAAGGCTTTAAGTATCCATTGGGACATGAAGTTAACACAGT
 CGGAAAACAAGCATAGAAATGGAAGAAAAGTGAACCTTGATGCTCAGTATTTGCAGAATACATTCAGGTTT
 CAAAGCGCCAGTCATTTGCTCTGTTTTCAAATCCAGGAAATGCAGAAGAGGAATGTGCAACATTTCTCTGC
 CCACTCTGGGTCCTTAAAGAAACAAAGTCCAAAAGTCACTTTTGAATGTGAACAAAAGGAAGAAAATCAA
 GGAAAGAATGAGTCTAATATCAAGCCTGTACAGACAGTTAATATCACTGCAGGCTTTCTGTGGTTGGTC
 AGAAAGATAAGCCAGTTGATAATGCCAAATGTAGTATCAAAGGAGGCTCTAGGTTTTGTCTATCATCTCA
 GTTCAGAGGCAACGAACTGGACTCATTACTCCAAATAAATGGACTTTTACAAAACCCATATCGTATA
 CCACCATTTTCCCATCAAGTCATTTGTTAAAACCTAAATGTAGAAAAATCTGCTAGAGGAAAACTTTG
 AGGAACATTCATGTACCTGAAAGAGAAATGGGAAATGAGAACATTCCAAGTACAGTGAACACAATTAG
 CCGTAATAACATTAGAGAAAATGTTTTTAAAGGAGCCAGCTCAAGCAATATTAATGAAGTAAAGTTCCAGT
 ACTAATGAAGTGGGCTCCAGTATTAATGAATAGGTTCCAGTGTGAAAACATTCAGCAGAAGTGGTA
 GAAACAGAGGGCCAAAATGAATGCTATGCTTAGATTAGGGTTTTGCAACCTGAGGCTATAAAACAAAG
 TCTTCTGGAAGTAATTGTAAGCATCCTGAAATAAAAAAGCAAGAATATGAAGAAGTAGTTCAGACTGTT
 AATACAGATTTCTCTCCATATCTGATTTAGATAAATAGAACAGCCTATGGGAAGTAGTCATGCATCTC
 AGGTTTTGTTCTGAGACACCTGATGACCTGTTAGATGATGGTGAATAAAGGAAGATACTAGTTTTGCTGA
 AAATGACATTAAGGAAAGTCTGCTGTTTTAGCAAAAAGCGTCCAGAGAGGAGAGCTTAGCAGGAGTCTC
 AGCCCTTTCACCCATACACATTTGGCTCAGGGTTACCGAAGAGGGGCCAAGAAATAGAGTCTCAGAAG
 AGAACTTATCTAGTGAGGATGAAGAGCTCCCTGCTTCCAACACTTGTTATTTGGTAAAGTAAACAATAT
 ACCTTCTCAGTCTACTAGGCATAGCACCGTTGCTACCGAGTGTCTGTCTAAGAACACAGAGGAGAATTTA
 TTATCATTGAAGAATAGCTTAAATGACTGCAGTAAACAGGTAATATTGGCAAAGGCATCTCAGGAACATC
 ACCTTAGTGAGGAAACAAAATGTTCTGCTAGCTTGTCTTTCACAGTGCAGTGAATTTGGAAGACTTGAC
 TGCAAATACAAACACCCAGGATCCTTTCTGATTGGTCTTCCAAACAAATGAGGCATCAGTCTGAAAGC
 CAGGGAGTTGGTCTGAGTGACAAGGAATGGTTTCAGATGATGAAGAAAGAGGAACGGGCTTGAAGAAA
 ATAAATCAAGAAGAGCAAAGCATGGATTCAAACTTAGGTGAAGCAGCATCTGGGTGTGAGAGTGAACAAG
 CGTCTCTGAAGACTGCTCAGGGCTATCCTCTCAGAGTACATTTAACCCTCAGCAGAGGGATACCATG
 CAACATAACCTGATAAAGCTCCAGCAGGAAATGGCTGAACTAGAAGCTGTGTTAGAACAGCATGGGAGCC
 AGCCTTCTAACAGCTACCTTCCATCATAAGTACTCCTCTGCCCTTGAGGACCTGCGAAAATCCAGAACA
 AAGCACATCAGAAAAAGCAGTATTAACCTCACAGAAAAGTAGTGAATACCCTATAAGCCAGAATCCAGAA
 GGCTTTCTGCTGACAAGTTTGGAGTGTCTGCAGATAGTTCTACCAGTAAAAATAAAGAACCAGGAGTGG
 AAAGGTACATCCCCTTCTAAATGCCATCATTAGATGATAGGTGGTACATGCACAGTTGCTCTGGGAGTCT
 TCAGAATAGAAACTACCCATCTCAAGAGGAGCTCATTAGGTTGTTGATGTGGAGGAGCAACAGCTGGAA
 GAGTCTGGGCCACAGATTTGACGGAACATCTTACTTGCCAAGGCAAGATCTAGAGGGAACCCCTTACC
 TGGAACTGGAATCAGCCTCTTCTGATGACCCTGAATCTGATCCTTCTGAAGACAGAGCCCCAGAGTC
 AGCTCGTGTGGCAACATACCATCTTCAACCTCTGCATTGAAAGTTCCCAATTGAAAGTTGCAGAAATCT
 GCCCAGGGTCCAGCTGCTGCTCATACTACTGATACTGCTGGGTATAATGCAATGGAAGAAAAGTGTGAGCA
 GGGAGAAGCCAGAATTGACAGCTTCAACAGAAAAGGTTCAACAAAAGAATGTCCATGGTGGTGTCTGGCCT
 GACCCAGAAAGATTTATGCTCGTGTACAAGTTTGCCAGAAAACACCACATCACTTTAACTAATCTAATT
 ACTGAAGAGACTACTCATGTTGTTATGAAAACAGATGCTGAGTTTGTGTGTGAACGGACTGAAATATT

TTCTAGGAATTGCGGGAGGAAAAATGGGTAGTTAGCTATTTCTGGGTGACCCAGTCTATTAAGAAAGAAA
 AATGCTGAATGAGCATGATTTTGAAGTCAGAGGAGATGTGGTCAATGGAAGAAACCACCAAGGTCCAAAG
 CGAGCAAGAGAATCCCAGGACAGAAAGATCTTCAGGGGGCTAGAAATCTGTTGCTATGGGCCCTTACCA
 ACATGCCACAGATCAACTGGAATGGATGGTACAGCTGTGTGGTGCTTCTGTGGTGAAGGAGCTTTCATC
 ATTCACCTTGGCACAGGTGCCACCAATTGTGGTTGTGCAGCCAGATGCCTGGACAGAGGACAATGGC
 TTCCATGCAATTGGGCAGATGTGTGAGGCACCTGTGGTGACCCGAGAGTGGGTGTGGACAGTGTAGCAC
 TCTACCAGTGCCAGGAGCTGGACACCTACCTGATACCCAGATCCCCACAGCCACTAC

ACGCGTACGCGGCCGCTCGAG - GFP Tag - GTTTAA

Protein Sequence:

>RG219679 representing NM_007294
 Red=Cloning site Green=Tags(s)

MDLSALRVEEVQNVINAMQKILECPICLLELIKEPVSTKCDHIFCKFCMLKLLNQKKGPSQCPLCKNDITK
 RSLQESTRFSQVEELLKIIICAFQLDTGLEYANSYNFAKKENNSPEHLKDEVSI IQSMGYRNRARLLQS
 EPENPSLQETSLSVQLSNLGTVRTLRKQRIQPQKTSVYIELGSDSSEDTVNKATYCSVGDQELLQITPQ
 GTRDEISLDSAKKAACEFSETDVTNTEHHQPSNNDLNTTEKRAAERHPEKYQGSSVSNLHVPCGTNTHA
 SSLQHENSLLLLTKDRMNVEKAFCNKSKQPLARSQHNRWAGSKETCNDRRTPSTEKKVDLADPLCER
 KEWNNKQLPCSENPRDTEVPWITLNSSIQKVNWF SRDELGSDSDHGESESNKAVDVLVDLNEVD
 EYSGSSEKIDLLASDPHEALICKSERVHKS SVESNIEDKIFGKTYRKKASLPNL SHVTENLIIGAFVTEP
 QIIQERPLTNKLRKRRTSGLHPEDFIKKADLAVQKTPEMINQGTNQTEQNGQVMNITNSGHENKTKGD
 SIQNEKNPNPIESLEKESAFKTKAEPISSSI SNMEL ELNIHNSKAPKKNRLRRKSSTRHIAL ELVSRN
 LSPPNCTELQIDSCSSSEI IKKKYNQMPVHRSNLQLMEGKEPATGAKKSNKPNEQTSKRHSDTFPEL
 KLTNAPGSFTKCSNTSELKEFVNPSLPREEKEELETVKVSNNAEDPKDMLSGERVLQTERSVESSSIS
 LVPGTDYGTQESISLLEVSTLGKAKTEPNKCVSQCAAFENPKGLIHGCSKDNNDTEGFKYPLGHEVNHS
 RETSIEMEESELDAQYLQNTFKVSKRQSFALFSNPGNAEEEECATFSAHSGSLKKQSPKVTFECEQKEENQ
 GKNESNIKPVQTVNITAGFPVVGQKDKPVDNAKCSIKGGSRFCLSSQFRGNETGLITPNKHGLLQNPYRI
 PPLFPIKSFVKTKCKKNLLEENFEEHSMSPEREMGNENIPSTVSTISRNNIRENVFKGASSNINEVGSS
 TNEVGSSINEIGSSDENIQAELGRNRGPKLNAMLRLGVLQPEVYKQSLPGSNCKHPEIKKQEYEEVVQTV
 NTDFSPYLI SDNLEQPMGSSSHASQVCSETPDDLDDGEIKEDTSAENDIKESSAVF SKSVQRGELSRSP
 SPFTHTHLAQGYRRGAKKLESSEENLSSEDEELPCFQHLLFGKVNNIPSQSTRHSTVATECLSKNTEENL
 LSLKNSLNDCSNQVILAKASQEHHLSEETKCSASLFSQCSELEDLTANTNTQDPFLIGSSKQMRHQSES
 QGVGLSDKELVSDDEERGTGLEENNQEEQMSDNSLGEAASGCESETSVSEDCSGLSSQSDILTTQQRDTM
 QHNLIKLQEMAELEAVLEQHGSQPSNSYPSIISDSSALEDLRNPEQSTSEKAVLTSQKSSEYPI SQNPE
 GLSADKFEVSADSSTSKNKEPGVERSSPSKCPSLDDRWMHSCSGSLQNRNYPSEELIKVVDVEEQLE
 ESGPHDLTETSYLPRQDLEGTPYLESGISLFSDDPESDPSEDRAPE SARVGNIPSSSALKVPQLKVAES
 AQGPAAAHTTDTAGYNAMEESVSREKPELTASTERVNRMSMVVSGLTPEEFMLVYKFAKHHITLNL I
 TEETTHVVMKTADEFVCERTLKYFLGIAGGKVVSYFWVTQSIKERKMLNEHDFEVGRD VVNGRNHQGPK
 RARESQRKIFRGL EICCYGPF TNMPTDQLEWMVQLCGASVVKELSSFTLGTGVHPIVVVQPDAWTEDNG
 FHAIGQMCEAPVVTREWLD SVALYQCQELDTYLIPQIPHSHY

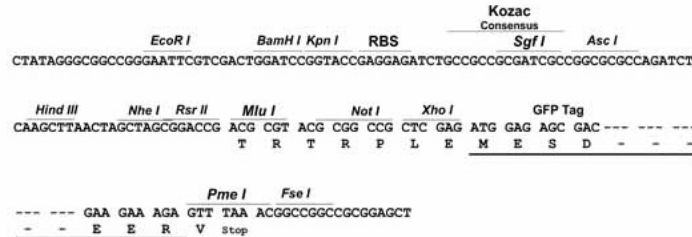
TRTRPLE - GFP Tag - V

Restriction Sites:

SgfI-MluI

Cloning Scheme:

Cloning sites used for ORF Shutting:


ACCN: NM_007294

ORF Size: 5589 bp

OTI Disclaimer: The molecular sequence of this clone aligns with the gene accession number as a point of reference only. However, individual transcript sequences of the same gene can differ through naturally occurring variations (e.g. polymorphisms), each with its own valid existence. This clone is substantially in agreement with the reference, but a complete review of all prevailing variants is recommended prior to use. [More info](#)

OTI Annotation: This clone was engineered to express the complete ORF with an expression tag. Expression varies depending on the nature of the gene.

Components: The ORF clone is ion-exchange column purified and shipped in a 2D barcoded Matrix tube containing 10ug of transfection-ready, dried plasmid DNA (reconstitute with 100 ul of water).

Reconstitution Method:

1. Centrifuge at 5,000xg for 5min.
2. Carefully open the tube and add 100ul of sterile water to dissolve the DNA.
3. Close the tube and incubate for 10 minutes at room temperature.
4. Briefly vortex the tube and then do a quick spin (less than 5000xg) to concentrate the liquid at the bottom.
5. Store the suspended plasmid at -20°C. The DNA is stable for at least one year from date of shipping when stored at -20°C.

RefSeq: [NM_007294.2](#), [NP_009225.1](#)

RefSeq Size: 7191 bp

RefSeq ORF: 5592 bp

Locus ID: 672

UniProt ID: [P38398](#)

Cytogenetics: 17q21.31

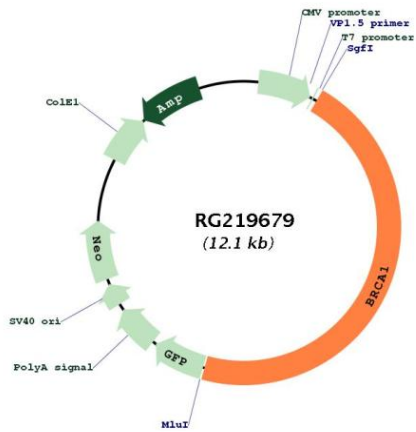
Domains: BRCT, RING

Protein Families: Druggable Genome, Transcription Factors

Protein Pathways: Ubiquitin mediated proteolysis

Gene Summary: This gene encodes a 190 kD nuclear phosphoprotein that plays a role in maintaining genomic stability, and it also acts as a tumor suppressor. The BRCA1 gene contains 22 exons spanning about 110 kb of DNA. The encoded protein combines with other tumor suppressors, DNA damage sensors, and signal transducers to form a large multi-subunit protein complex known as the BRCA1-associated genome surveillance complex (BASC). This gene product associates with RNA polymerase II, and through the C-terminal domain, also interacts with histone deacetylase complexes. This protein thus plays a role in transcription, DNA repair of double-stranded breaks, and recombination. Mutations in this gene are responsible for approximately 40% of inherited breast cancers and more than 80% of inherited breast and ovarian cancers. Alternative splicing plays a role in modulating the subcellular localization and physiological function of this gene. Many alternatively spliced transcript variants, some of which are disease-associated mutations, have been described for this gene, but the full-length natures of only some of these variants has been described. A related pseudogene, which is also located on chromosome 17, has been identified. [provided by RefSeq, May 2020]

Product images:



Circular map for RG219679