

## Product datasheet for **RG219666**

### SPRR3 (NM\_001097589) Human Tagged ORF Clone

#### Product data:

Product Type:	Expression Plasmids
Product Name:	SPRR3 (NM_001097589) Human Tagged ORF Clone
Tag:	TurboGFP
Symbol:	SPRR3
Mammalian Cell Selection:	Neomycin
Vector:	pCMV6-AC-GFP (PS100010)
E. coli Selection:	Ampicillin (100 ug/mL)
ORF Nucleotide Sequence:	>RG219666 ORF sequence, <b>codon optimized</b> . Due to the complexity of NM_001097589, the ORF clone is codon optimized for mammalian Expression. The nucleotide sequence differs from the reference sequence, yet the amino acid sequence remains identical.

Red=Cloning site Blue=ORF Green=Tags(s)

TTTTGTAATACGACTCACTATAGGGCGGCCGGAATTCGTCGACTGGATCCGGTACCGAGGAGATCTGCC  
GCC**CGATCGCC**

ATGAGCTCTACCAGCAGAAACAGACATTCCTCCTCCACAGCTTCAGCAGCAGCAGGTAAAGCAAC  
CCTCCCAGCCCCCTCAGGAGATTTTGTTCCTCAACTACGAAGGAGCCATGCCACAGTAAAGTCCCCCA  
ACCCGGAAACTAAAATACCCGAGCCGGGGTGTACTAAAGTTCCCGAGCCAGGCTGCACAAAAGTGCCA  
GAACCGGGCTGTACTAAAGTGCCGGAACCCGGATGCACCAAGGTACCTGAGCCCGGATGTACCAAGGTT  
CAGAACCAGGATGCACAAAAGTGCTGAACCAGGTTACACAAAGGTGCCCGAACCCAGGGAGTATTAAGGT  
ACCGGATCAGGGATTTATCAAGTCCCGAGCCCGGCCATTAAAGTACCAGAGCAGGGATACACAAA  
GTCCCGTACCCGGCTACACAAAATTGCCGGAACCATGTCCTTCAACAGTGACACCCGGCCCCGCGCAGC  
AGAAGACCAAGCAGAAG

**ACGCGT**ACGCGGCCGCTCGAG - GFP Tag - GTTTAA



[View online »](#)

**Protein Sequence:** >RG219666 representing NM\_001097589  
Red=Cloning site Green=Tags(s)

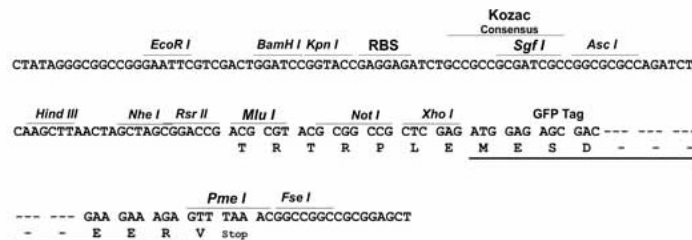
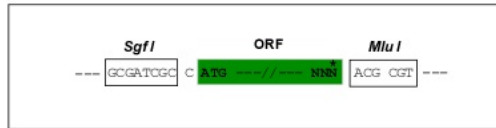
MSSYQQKQTFPPPLQQQQVKQPSQPPPQEIFVPTTKEPCHSKVPQPGNTKIPEPGCTKVPEPGCTKVP  
 EPGCTKVPEPGCTKVPEPGCTKVPEPGCTKVPEPGYTKVPEPGSIKVPDQGFIKFPEPGAIAKVPEQGYTK  
 VPVPGYTKLPEPCPSTVTPGPAQQKTKQK

TRTRPLE - GFP Tag - V

**Restriction Sites:** SgfI-MluI

**Cloning Scheme:**

Cloning sites used for ORF Shuttling:



**ACCN:** NM\_001097589

**ORF Size:** 507 bp

**OTI Disclaimer:** The molecular sequence of this clone aligns with the gene accession number as a point of reference only. However, individual transcript sequences of the same gene can differ through naturally occurring variations (e.g. polymorphisms), each with its own valid existence. This clone is substantially in agreement with the reference, but a complete review of all prevailing variants is recommended prior to use. [More info](#)

**OTI Annotation:** This clone was engineered to express the complete ORF with an expression tag. Expression varies depending on the nature of the gene.

**Components:** The ORF clone is ion-exchange column purified and shipped in a 2D barcoded Matrix tube containing 10ug of transfection-ready, dried plasmid DNA (reconstitute with 100 ul of water).

**Reconstitution Method:**

1. Centrifuge at 5,000xg for 5min.
2. Carefully open the tube and add 100ul of sterile water to dissolve the DNA.
3. Close the tube and incubate for 10 minutes at room temperature.
4. Briefly vortex the tube and then do a quick spin (less than 5000xg) to concentrate the liquid at the bottom.
5. Store the suspended plasmid at -20°C. The DNA is stable for at least one year from date of shipping when stored at -20°C.

**RefSeq:** [NM\\_001097589.1](#), [NP\\_001091058.1](#)

**RefSeq Size:** 900 bp

**RefSeq ORF:** 510 bp

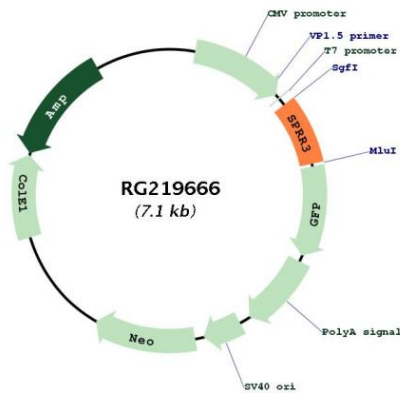
**Locus ID:** 6707

**UniProt ID:** [Q9UBC9](#)

**Cytogenetics:** 1q21.3

**Gene Summary:** Cross-linked envelope protein of keratinocytes.[UniProtKB/Swiss-Prot Function]

**Product images:**



Circular map for RG219666