

Product datasheet for **RG219636**

TMEM180 (MFSD13A) (NM_024789) Human Tagged ORF Clone

Product data:

Product Type:	Expression Plasmids
Product Name:	TMEM180 (MFSD13A) (NM_024789) Human Tagged ORF Clone
Tag:	TurboGFP
Symbol:	MFSD13A
Synonyms:	bA18I14.8; C10orf77; TMEM180
Mammalian Cell Selection:	Neomycin
Vector:	pCMV6-AC-GFP (PS100010)
E. coli Selection:	Ampicillin (100 ug/mL)



[View online »](#)

ORF Nucleotide Sequence:

>RG219636 representing NM_024789
 Red=Cloning site Blue=ORF Green=Tags(s)

TTTTGTAATACGACTCACTATAGGGCGGCCGGGAATTCGTCGACTGGATCCGGTACCGAGGAGATCTGCC
 GCC**GCGATCGCC**

ATGGGGCTGGGTAGCCCCAGGCTGGTTGCTGGGTCTGCCACAGCTGTGGTCTATGGCTCCCTGGCTC
 TCTTACCACCATCTGCACAATGTCTTCTGCTACTATGTGGACACCTTTGTCTCAGTGTACAAGAT
 CAACAAAATGGCCTTCTGGGTCGAGAGACAGTGTCTCTCTGGAACAGCCTCAATGACCCTCTCTTC
 GGTTGGCTCAGTGACCGGAGTTCCTCAGCTCCAGCCCCGGTACAGGCGCCGGGCTCTCCTCAAGGGCTG
 TGGTGTGGCCCGGGTGCAGGCCCTGGGCTGGCATGGGCCGCTGCTGGCGCTGTCGTTCTGGCGTCTG
 GGTGCCCTGGGCCAGCTGGCCTGCAGTCTTGTCTGTGCCTGTGCCTCTATGATGGTCTCTGACGCTC
 GTGGACCTGCACCACCATGCCTGTGGCCGACCTGGCCCTCTCAGCCCAGCCGACCCACCTCAACT
 TCTACTGCTCCCTCTCAGCGCGGCCGGCTCCCTCTGTCTTTGCATCCTATGCCTTTTGAACAAGGA
 GGATTTCTCTCTTCCGCGCTTCTGCGTGACACTGGCTGTGAGCTCTGGGCTGGGCTTCTGGGGGCC
 ACACAGCTGCTGAGGCGCGGGTTGAGGCGGCCGAAAGGACCCAGGGTCTCAGGCCTGGTTGTGGATA
 GCGGCCTGTGTGGAGAGGAGCTGCTTGTGGCAGTGAGGAGGCGGACAGCATCACCTTGGGCCGGTATCT
 CCGGCAGCTGGCAGCCATCGGAACTTCTGTGGTTCTGTGAGCATGGACCTGGTGCAGGTCTTCCACTGC
 CACTTCAACAGCAACTTCTTCCCTCTTCTGAGCATCTGTTGTCGACCATATCTCCCTTCCACGG
 GCTCCATCTGTGGGCTCTCCTATGTGCTCCCATCTCAACAACCTCTACTTCTGTCCCTGTGCCG
 GCGCTGGGGCTACTACGGTGGTGGGGGCTCTTCTGCTCAAGCTGGGACTTAGCCTGCTCATGTTG
 TTGGCCGGCCCGACACCTCAGCCTGCTGTGCCTTTCATTGCCAGCAACCGCTTCTACTGAGGCA
 CCTGTAAGCTGCTGACCTTGGTGGTCACTGACCTGGTAGACGAGGACCTGGTGTGAACCCGCAAGCA
 GGCAGCCTCGGCCTCTCTTTGGCATGGTTGCCTTGGTGACCAAGCCAGGCCAGACCTTGGCCCGCTG
 CTGGGCACCTGGCTGCTGTTTCTACACAGGTATGACCTTCCAGCAGTCCCTCATAACCCCTGTGG
 GGAGTGCCATCCCTGGCCAGAGCCCCAGCTCCAGCCCTGCACAGGCCCGACGCTCCGCCAGGGCTG
 CTTCTACCTGCTGGTGTGGTGCATCACCTGTGCTCTGCTGCAGCTCTTACCTGGTCCAGTTCAGC
 CTGCATGGGAGACGCTGCATGGTCAAGGCCAGGCCAGAACCTGTACAGGCCAAACCTGGATG
 TTAAGATGGTG

ACGCGTACGCGGCCGCTCGAG – GFP Tag – GTTTAA

Protein Sequence:

>RG219636 representing NM_024789
 Red=Cloning site Green=Tags(s)

MGLGQPQAWLLGLPTAVVYGLALFTTILHNVFLLYYVDTFVSVYKINKMAFWVGETVFLLWNSLNDPLF
 GWLSDRQFLSSQPRSGAGLSSRAVVLARVQALGWHGPLLALSFLAFWVPWAPAGLQFLCLCLYDGFLL
 VDLHHHALLADLALSAHDRTHLNFYCSLFSAAAGLSVFSYAFWNKEDFSSFRAFVTLAVSSGLGFLGA
 TQLRRRVEAARKDPGCSGLVVDVSLGCEELLVGSEEADSIITLGRYLRQLARHRNFLWFVSMDLVQVFHC
 HFNSNFFPLFLEHLLSDHISLSTGSILLGLSYVAPHLNLYFLSLCRRWGVYAVVRGLFLLKLLSLLML
 LAGPDHLSLLCLFIASNRVFTEGTCKLLTLVVTDLVDEDLVLNHRKQAASALLFGMVALVTKPGQTFAPL
 LGTWLLCFYTGHDLFQQLITPVGSAHPWPEPPAPAPAQAPTLRQGFYLLVLPITCALLQLFTWSQFT
 LHGRRLHMVKAQRQNLQAQTLVDMV

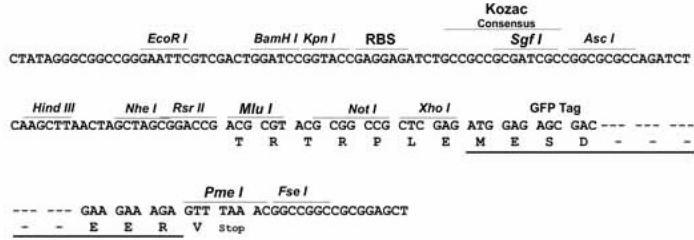
TRTRPLE – GFP Tag – V

Restriction Sites:

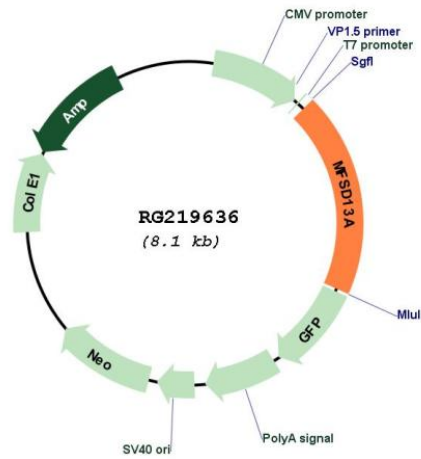
Sgfl-MluI

Cloning Scheme:

Cloning sites used for ORF Shutting:



Plasmid Map:



ACCN:	NM_024789
ORF Size:	1551 bp
OTI Disclaimer:	The molecular sequence of this clone aligns with the gene accession number as a point of reference only. However, individual transcript sequences of the same gene can differ through naturally occurring variations (e.g. polymorphisms), each with its own valid existence. This clone is substantially in agreement with the reference, but a complete review of all prevailing variants is recommended prior to use. More info
OTI Annotation:	This clone was engineered to express the complete ORF with an expression tag. Expression varies depending on the nature of the gene.
Components:	The ORF clone is ion-exchange column purified and shipped in a 2D barcoded Matrix tube containing 10ug of transfection-ready, dried plasmid DNA (reconstitute with 100 ul of water).
Reconstitution Method:	<ol style="list-style-type: none">1. Centrifuge at 5,000xg for 5min.2. Carefully open the tube and add 100ul of sterile water to dissolve the DNA.3. Close the tube and incubate for 10 minutes at room temperature.4. Briefly vortex the tube and then do a quick spin (less than 5000xg) to concentrate the liquid at the bottom.5. Store the suspended plasmid at -20°C. The DNA is stable for at least one year from date of shipping when stored at -20°C.
RefSeq:	NM_024789.2 , NP_079065.2
RefSeq Size:	2846 bp
RefSeq ORF:	1554 bp
Locus ID:	79847
UniProt ID:	Q14CX5
Cytogenetics:	10q24.32
Protein Families:	Transmembrane