

Product datasheet for **RG219630**

RASGRP 4 (RASGRP4) (NM_170604) Human Tagged ORF Clone

Product data:

Product Type:	Expression Plasmids
Product Name:	RASGRP 4 (RASGRP4) (NM_170604) Human Tagged ORF Clone
Tag:	TurboGFP
Symbol:	RASGRP4
Mammalian Cell Selection:	Neomycin
Vector:	pCMV6-AC-GFP (PS100010)
E. coli Selection:	Ampicillin (100 ug/mL)



[View online »](#)

**ORF Nucleotide
Sequence:**

>RG219630 representing NM_170604
 Red=Cloning site Blue=ORF Green=Tags(s)

TTTTGTAATACGACTCACTATAGGGCGGCCGGGAATTCGTCGACTGGATCCGGTACCGAGGAGATCTGCC
 GCC**CGATCGCC**

ATGAACAGAAAAGACAGTAAGAGGAAGTCCCACCAGGAATGCACCGAAAAATAGGAGGGCGAGGCCGGC
 CCCGCCAAGTGCGCCGCCACAAGACATGCCCCAGCCCTCGGAAAATCAGCAAGGTCATGGCTTCCATGAA
 CCTGGGCCTGCTGAGTGAGGGCGGCTGCAGCGAAGATGAGCTGCTGGAGAAATGCATCCAGTCTTCGAT
 TCAGCTGGCAGCCTGTGCCACGAGGACCACATGCTCAACATGGTCTGGCCATGCACAGCTGGGTGCTGC
 CGTCCGCCGACCTGGCTGCCCGCTGCTGACCTCATACCAGAAGGCCACAGGGGACCCAGGAGCTGAG
 ACGGCTGCAGATCTGTCACCTGGTCAGGTAAGTGGCTGATGCGACACCCTGAGGTGATGCACCAGGATCCC
 CAGCTAGAAGAAGTCATAGGTCGTTTCTGGGCCACCGTGGCCCGGAGGGCAACTCAGCCCAGAGAAGAC
 TGGGAGACTCTTCTGACCTCCTGAGCCCTGGTGGCCCTGGCCCCCACTCCCAATGAGCAGCCCAGGCCCT
 GGGCAAAAAGCGCAAAGTGTCTTGGCTTTTCGACCACTTGAGAGCGGGGAGCTGGCTCAGCACCTCACC
 TACCTGGAGTTCGGTCTCTCCAGGCTATCACGCCCCAGGACCTGCGGAGCTACGTTTTGACAGGGCTCAG
 TACGAGGCTGCCCGCCCTGGAGGGCTCCGTAGGTCTCAGCAACAGCGTGTCCCGCTGGGTGCAGGTGAT
 GGTGCTGAGCCGTCCCGGCCCTACAGCGTGCACAGGTGCTGGACAAGTTCATTACAGTGGCACAGAGG
 CTCCACCAGCTGCAGAATTTCAACACGCTGATGGCAGTGCACAGGGGGCCTGTGTACAGTGCCATCTCCA
 GACTCAAGGACTCCCATGCCACCTGAGCCCTGACAGCACCAAGGCCCTCCTGGAGCTCACTGAGCTCCT
 TGCTCCCAACAACACTACGCCGCTACCGCCGACCTGGGTGGCTGCGCGGTTTCCGGCTGCCTGTA
 CTGGGCGTGACCTCAAGGACCTGGTGTCCCTGCATGAGGCACAGCCCGACAGGTTGCCTGACGGCCGCC
 TGCACCTACCCAAGCTGAACAACCTCTACCTGCGGCTGCAGGAGCTGGTGGCCCTCAAGGGCAGCATCC
 ACCCTGCAGCGCCAATGAGGATCTGCTGCACCTGCTCACGCTCTCCCTGGACCTTCTACACGGAAGAC
 GAGATCTATGAGCTTTCTATGCCCGGGAGCCGCTTGTCCCAAGAGCCTGCCACCCTCCCCCTTCAATG
 CACCTCTGGTGGTGGAGTGGGCCCTGGTGTGACACCCAAGCCGGACAGGGTCACACTGGGTGCGCATGT
 GGAGCAGCTGGTGGAGTCTGTGTTCAAGAATTATGACCCTGAAGGCCGAGGAACAATCTCTCAGGAGGAC
 TTTGAGCGACTCTCGGGCAATTTCCCTTCGCCTGCCATGGGCTTCAACCACCCACGCCAGGGGAGAG
 GATCCTTCAGCAGAGAGGAGCTGACAGGGTACCTGCTCCGGGCCAGGCCATCTGCTCCAAGTTGGGCT
 GGCCTTCTGCACACCTCCATGAGGTACCTTCCGAAAGCCTACCTTCTGCGACAGCTGCAGTGGCTTC
 CTCTGGGGTGTACCAAGCAAGGCTACCGCTGTGGGAGTGGGGCTGTGTTGCCACAAACTGCAGAG
 ACCAGGTGAAGGTAGAATGTAAGAAGAGGCCAGGGGCCAAGGGGATGCAGGACCCCGGAGCTCCTGT
 CCCATCCACACCAGCTCCCCATGCCAGCTGTGGCTCCGAGGAAAATCACTCCTACACGCTATCCCTGGAG
 CCTGAGACTGGGTGCCAGCTTCGCCATGCTGGACCCAGACTGAATCCCCACACCCTTCTGGGAAACAG
 ATACGGTCCCCTGCCCGGTGATGGACCCACCATCAACTGCATCCTCAAGCTGGATTCC

ACGCGTACGCGGCCGCTCGAG – GFP Tag – GTTTAA

Protein Sequence: >RG219630 representing NM_170604
 Red=Cloning site Green=Tags(s)

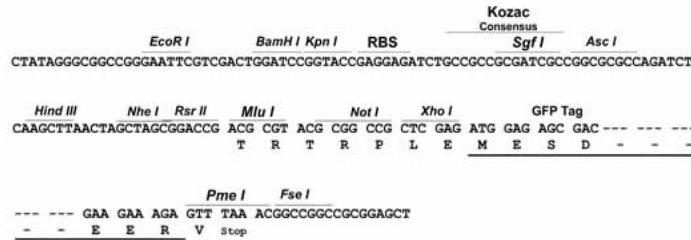
MNRKDSKRKSHQECTGKIGGRGRPRQVRRHKTCPSPREISKVMASMNLLGLLSEGGCSEDELLEKCIQSFD
 SAGSLCHEDHMLNMVLAHMSWVLPADLAARLLTSYQKATGDTQELRRLQICHLVRYWLMRHPEVMHODP
 QLEEVIGRFWATVAREGNSAQRRLGDSSDLLSPGGPGPPLPMSSPGLGKKRKYVSLFDHLETGELAQHLT
 YLEFRSFQAITPQDLRSYVLQGSVRCPALEGSVGLSNSVSRWVQVMVLSRPGPLQRAQVLDKFIHVAQR
 LHQLQNFNTLMAVTGGLCHSAISRKDSHAHLSPDSTKALLELELLASHNNYARYRRTWAGCAGFRLPV
 LGVHLKDLVSLHEAQPDRLPDGRLLHLPKLNLYLRLQELVALQGQHPPCSANEDLLHLLTSLDLFYTED
 EIYELSYAREPRCPKSLPPSPFNAPLVVEWAPGVTPKPDVRTLGRHVEQLVESVFKNYDPEGRGTISQED
 FERLSGNFPFACHGLHPPPRQGRGSFSREELTYLLRASAICSKLGLAFLHTFHEVTRKPTFCDCSCGF
 LWGVTKQGYRCREGLCCHKHCRDQVQVECKKRPKAKGDAGPPGAPVVPSTPAPHASCSEENHSYTLSE
 PETGCQLRHAWTQTESPHPSWETDTPCPVMDPPSTASSKLDS

TRTRPLE - GFP Tag - V

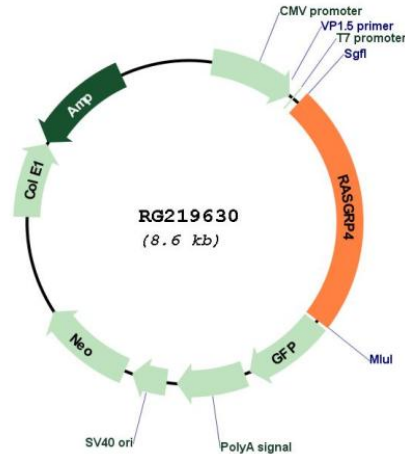
Restriction Sites: SgfI-MluI

Cloning Scheme:

Cloning sites used for ORF Shuttling:



Plasmid Map:



ACCN: NM_170604

ORF Size: 2019 bp

OTI Disclaimer: The molecular sequence of this clone aligns with the gene accession number as a point of reference only. However, individual transcript sequences of the same gene can differ through naturally occurring variations (e.g. polymorphisms), each with its own valid existence. This clone is substantially in agreement with the reference, but a complete review of all prevailing variants is recommended prior to use. [More info](#)

OTI Annotation: This clone was engineered to express the complete ORF with an expression tag. Expression varies depending on the nature of the gene.

Components: The ORF clone is ion-exchange column purified and shipped in a 2D barcoded Matrix tube containing 10ug of transfection-ready, dried plasmid DNA (reconstitute with 100 ul of water).

Reconstitution Method:

1. Centrifuge at 5,000xg for 5min.
2. Carefully open the tube and add 100ul of sterile water to dissolve the DNA.
3. Close the tube and incubate for 10 minutes at room temperature.
4. Briefly vortex the tube and then do a quick spin (less than 5000xg) to concentrate the liquid at the bottom.
5. Store the suspended plasmid at -20°C. The DNA is stable for at least one year from date of shipping when stored at -20°C.

RefSeq:	NM_170604.3
RefSeq Size:	2436 bp
RefSeq ORF:	2022 bp
Locus ID:	115727
UniProt ID:	Q8TDF6
Cytogenetics:	19q13.2
Protein Families:	Druggable Genome
Protein Pathways:	MAPK signaling pathway
Gene Summary:	<p>The protein encoded by this gene is a member of the Ras guanyl nucleotide-releasing protein (RasGRP) family of Ras guanine nucleotide exchange factors. It contains a Ras exchange motif, a diacylglycerol-binding domain, and two calcium-binding EF hands. This protein was shown to activate H-Ras in a cation-dependent manner in vitro. Expression of this protein in myeloid cell lines was found to be correlated with elevated level of activated RAS protein, and the RAS activation can be greatly enhanced by phorbol ester treatment, which suggested a role of this protein in diacylglycerol regulated cell signaling pathways. Studies of a mast cell leukemia cell line expressing substantial amounts of abnormal transcripts of this gene indicated that this gene may play an important role in the final stages of mast cell development. Multiple transcript variants encoding different isoforms have been found for this gene. [provided by RefSeq, Apr 2009]</p>