

## Product datasheet for **RG219621**

### **GCOM1 (POLR2M) (NM\_015532) Human Tagged ORF Clone**

#### Product data:

Product Type:	Expression Plasmids
Product Name:	GCOM1 (POLR2M) (NM_015532) Human Tagged ORF Clone
Tag:	TurboGFP
Symbol:	POLR2M
Synonyms:	GCOM1; Gdown; Gdown1; GRINL1A
Mammalian Cell Selection:	Neomycin
Vector:	pCMV6-AC-GFP (PS100010)
E. coli Selection:	Ampicillin (100 ug/mL)
ORF Nucleotide Sequence:	>RG219621 representing NM_015532 Red=Cloning site Blue=ORF Green=Tags(s)

TTTTGTAATACGACTCACTATAGGGCGGCCGGAATTCGTCGACTGGATCCGGTACCGAGGAGATCTGCC  
GCC**CGATCGCC**

ATGTGCTCGTGCCTCCGCGGCTTCGAGCCCAAGCTCCCGAGGACTTGCGCAGCGGAGTTTGGTGGAGC  
TGCGGGAAATGTTGAAGCGCCAGGAGAGACTTTTGCACAACGAAAAATTCATTTGCAAATGCCCGACAA  
AGGTAAGAAAGATCTTTGACTCTTTTGCCTAACTGAAAGCTGCCATTGCAGAATGTGAAGAAGTTAGAAGA  
AAAAGTGAAGTGTAAACCTGTTAGTTTACAGTGTAAAGCAAGCAAAAGCAATTCAGAAGTTGATG  
TGGGTACAGATAAGGCCAGAATTCTGACCCGATACTTGATACTCATCACTAGTTCTCGGATGTTCTC  
TGTAGATAACATCAAGTCATCTCAAACCTCACAAAACCGAGGACTTGAGGTCCTACTCTTGAAGGTGAT  
GAAGAGACTTCAGAGGTTGAGTACACAGTGAATAAGGGCCAGCTTCAGCAATAGAGACAGGGTACCAC  
CTTCATCTGAAGCTAGTGAAGTACACCCGCGGCATCGTGTTCAGTCAAGCGGAAGATACTTCCAGCAG  
CTTTGACAACCTGTTTATTGACAGGTTACAGAGGATCACCATTGCGGACCAAGGTGAACAACAGTCAGAA  
GAAAACGCAAGTACTAAGAACTTGACAGGCCTTCCAGTGGGACTGAGAAGAAACCTCATTACATGGAAG  
TGCTAGAAATGCGAGCCAAAACCCAGTGCCCGAGCTGCGTAAATTTAAAACCAATGTGTTACCTTTTCG  
ACAAAATGATTCATCTAGTCATTGCCAGAAGAGTGGGTCTCCTATTTCTCAGAAGAGCGGCGCGCAGG  
GATAAGCAGCATCTTGATGACATCACAGCAGCTCGGCTTACCACCTCACCATATGCCACGCGAGCTGC  
TCTCCATAGAAGAATCCTTGGCACTTCAGAAACAGCAGAAACAGAAATTATGAGGAGATGCAAGCAAAGCT  
CGCAGCGCAAAAATTAGCTGAAAGACTGAATATTTAAATGCGGAGTTATAATCCAGAAGGGGAGTCTTCA  
GGGAGATACCGAGAAGTAAGGGATGAAGATGACGATTGGTCTCTGATGAATTC

**ACCGT**ACGCGGCCGCTCGAG - GFP Tag - GTTTAA



[View online »](#)

**Protein Sequence:** >RG219621 representing NM\_015532  
 Red=Cloning site Green=Tags(s)

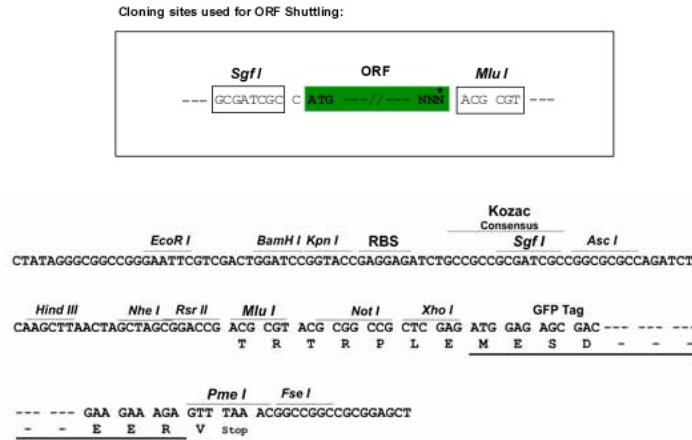
MCSLPRGFEPQAPEDLAQRSLVELREMLKRQERLLRNEKFICKLPDKGKKIFDSFAKLKAAIAECEVEVRR  
 KSELFNPVSLDCKLRQKAIAEVDVGTDKAQNSDPILDTSSLVPGCSSVDNIKSSQTSQNQGLGRPTLEGD  
 EETSEVEYTVNKGPASSNRDRVPPSSEASEHHRHRVSSQAEDTSSSFDNLFIDRLQRITIAHQGEQQSE  
 ENASTKNLTGLSSGTEKKPHYMEVLEMRAKNPVPQLRKFKTNVLPFRQNDSSSHCQKSGSPISSEERRRR  
 DKQHLDDITAARLLPLHMPQTQLLSIEESLALQKQKQNYEEMQAKLAAQKLAERLNKMRSYNPEGESS  
 GRYREVRDEDDWSSDEF

TRTRPLE - GFP Tag - V

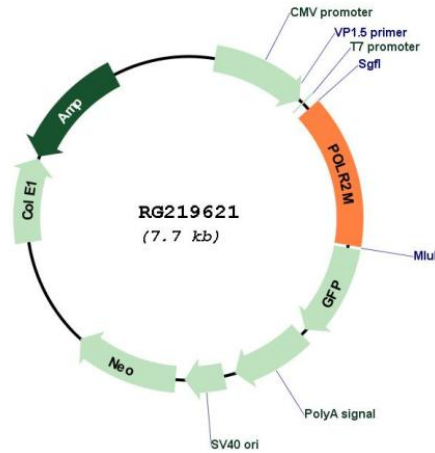
**Restriction Sites:**

Sgfl-MluI

**Cloning Scheme:**



**Plasmid Map:**



**ACCN:**

NM\_015532

<b>ORF Size:</b>	1104 bp
<b>OTI Disclaimer:</b>	The molecular sequence of this clone aligns with the gene accession number as a point of reference only. However, individual transcript sequences of the same gene can differ through naturally occurring variations (e.g. polymorphisms), each with its own valid existence. This clone is substantially in agreement with the reference, but a complete review of all prevailing variants is recommended prior to use. <a href="#">More info</a>
<b>OTI Annotation:</b>	This clone was engineered to express the complete ORF with an expression tag. Expression varies depending on the nature of the gene.
<b>Components:</b>	The ORF clone is ion-exchange column purified and shipped in a 2D barcoded Matrix tube containing 10ug of transfection-ready, dried plasmid DNA (reconstitute with 100 ul of water).
<b>Reconstitution Method:</b>	<ol style="list-style-type: none"><li>1. Centrifuge at 5,000xg for 5min.</li><li>2. Carefully open the tube and add 100ul of sterile water to dissolve the DNA.</li><li>3. Close the tube and incubate for 10 minutes at room temperature.</li><li>4. Briefly vortex the tube and then do a quick spin (less than 5000xg) to concentrate the liquid at the bottom.</li><li>5. Store the suspended plasmid at -20°C. The DNA is stable for at least one year from date of shipping when stored at -20°C.</li></ol>
<b>RefSeq:</b>	<a href="#">NM_015532.5</a>
<b>RefSeq Size:</b>	4139 bp
<b>RefSeq ORF:</b>	1107 bp
<b>Locus ID:</b>	81488
<b>UniProt ID:</b>	<a href="#">Q6EEV4</a>
<b>Cytogenetics:</b>	15q21.3
<b>Protein Families:</b>	Druggable Genome, Ion Channels: Other
<b>Gene Summary:</b>	This gene encodes a subunit of a specific form of RNA polymerase II termed Pol II(G). The encoded protein may act as a negative regulator of transcriptional activation by the Mediator complex. Alternative splicing results in multiple transcript variants. There is a pseudogene for this gene on chromosome 4. Readthrough transcription between this gene and the neighboring upstream gene MYZAP (myocardial zonula adherens protein) is represented with GeneID 145781. [provided by RefSeq, Oct 2013]