

Product datasheet for **RG219608**

INSC (NM_001031853) Human Tagged ORF Clone

Product data:

Product Type:	Expression Plasmids
Product Name:	INSC (NM_001031853) Human Tagged ORF Clone
Tag:	TurboGFP
Symbol:	INSC
Mammalian Cell Selection:	Neomycin
Vector:	pCMV6-AC-GFP (PS100010)
E. coli Selection:	Ampicillin (100 ug/mL)



[View online »](#)

ORF Nucleotide Sequence:

>RG219608 representing NM_001031853
 Red=Cloning site Blue=ORF Green=Tags(s)

TTTTGTAATACGACTCACTATAGGGCGGCCGGGAATTCGTCGACTGGATCCGGTACCGAGGAGATCTGCC
 GCC**CGGATCGCC**

ATGAGACGGCCCCCTGGCAATGGAGAGGGCGCCAGCGAAGGTCCAGGTGGCTGGGTCTATGGGAGTCC
 AGGAGTCCAGGAGGCTGTGCTGTGCCGGTCACGACCGCTGCAAGCAGGCTTTGCTGCAGATTGGGATCAA
 CATGATGGCACTGCCTGGAGGTCGCCACCTGGACTCCGTACCCTGCCGGGTACGCGCTACACCTGATG
 CAGGTGGACTCAGTCCAGCGCTGGATGGAAGATCTGAAGCTCATGACCGAGTGGAGTGCATGTGTGTCC
 TGCAGGCCAAGCCATCAGCCTGGAAGAGGATGCACAGGGTGACCTCATCCTGGCAGGTGGCCCTGGCCC
 TGGAGACCCCTGCAGCTGCTGCTCAAACGGGGTTGGGTCAATAGCACAGAGCTGCGCAGGATCGGGCAG
 AAGCTGGCCAGGACCGCTGGGCACGGGTGCACAGCATGAGCGTGCCTGACCTGCCATGCCCGCTCCA
 TGGTCAGCGAGTACAGTGTGTCAGCAGGAACCTTGAAGGAAATGGGCGAGATTGAGAAGCTGCTAAT
 GGAGAAATGCTCGGAGCTCTCGGAGTACAGAGAGGTGCCTTCAGGTTGAGAATGAGCATGTCTTGAAG
 TCAATGAAGGCCTGCGTGAGTGAGACCCGAGCATGCTGGGCCAGCACTTTGGCCAGCTGCTGGAGCTGG
 CCCTGACACGGGAGGTTCAAGCACTGGTGAAGAAAATGATGCCTCAGACAATATCTACACCACAGAGTC
 CACCACAGGGAACCTGTTCAAGCTGACCCAGGAGGGGGCTCCCTTGTGCCGCATCATAGCCAAGGAGGGT
 GGGGTGCTAGCACTCTTCAAGGTTTGGCCGAGGACAGTTTCCGGTGCTTGTACCCAGGCGCTCCGCA
 CGCTGGCTCCATCTGCTGCGTGGAAAGAGGGTGTCCACCAGTGGAGAAGGTGGATGGCGTTCTGTGCTT
 GGCCGACATCTGACCGACAACAGCCACTCAGAGGCCACACGGGCTGAGGCTGCGGCTGTGGTGGCCAG
 GTCACCTCCCCACACCTGCCCGTACCCAGCACCTCAGTAGCTTCTGGAGAGCATGGAGGAGATCGTGA
 CAGCCCTCGTCAAACGTGCCAAGAGGCTCATCAGGGGAAGTCTTCTACTGGCCTCTGCGGCCCTTGC
 CAACATCACGTTCTTTGACACAATGGCCTGCGAGATGCTCCTGCAGTTGAATGCCATCCGTGTTCTCCTG
 GAAGCCTGCAGTGACAAGCAGAGAGTGGACACGCCTTACACTCGGACCAGATTGTGACCATCTGGCAA
 ACATGTCTGCTCTAGAACAGTGTGCTCTGACATCATTACGAAAATGGGGTCCAGCTTATCATGGGCAT
 GCTGTCTGAAAAACCAAGGTCTGGGACTCTGCTGAAGTGGCAGCCTGTGAGCGAGTCCAGCAGAAAGCT
 GCAGTGACCTGGCTCGTCTCAGCCGAGACCCAGATGTGGCACGGGAGGCCGTGCGGCTCAGCTGCATGT
 CCCGTCTCATCGAGCTCTGCAGATCCCCATCAGAGAGGAACAGCAGTACGCGCTGCTTGTGGCCTGCCT
 GGCTGCTCTGCGTAGATTGGCTGGGTCTGCCCTGAAGGCCTCCAGGACTCTGACTTTCAGCAGTTGGTC
 CAGCCTCGGCTGGTGGACTCCTTCTACTGCAGCAACATGGAGGAGAGTTTTGTG

ACGCGTACGCGGCCGCTCGAG – GFP Tag – GTTTAA

Protein Sequence:

>RG219608 representing NM_001031853
 Red=Cloning site Green=Tags(s)

MRRPPNGEAAASEGPGWGLWGVQESRRLCCAGHDRCKQALLQIGINMMALPGGRHLDVSLTPGQRLHLM
 QVDSVQRWMDLKLMTCECECMCVLQAKPISLEEDAQGDILAGGPGPGDPLQLLLKRGWVISTELRRIGQ
 KLAQDRWARVHSMVRLTCHARSMVSEYSAVSRNSLKEMGEIEKLLMEKCELSAVTERCLQVENEHVLK
 SMKACVSETLSMLGQHFQQLLELALTRVQALVRKIDASDNIYTTSTGNLFSLTQEGAPLCRIAKEG
 GVVALFKVCRQDSFRCLYPQALRTLASICVVEGVHQLKVDGVLCLADILTDNSHSEATRAEAAVVAQ
 VTSPHLPVTQHLSSFLESMEIIVTALVKLCQEASSGEVFLASAALANITFFDTMACEMLLQLNAIRVLL
 EACSDKQRVDTPYTRDQIVTILANMSVLEQCASDIIQENGVQLIMGMLSEKPRSGTPAEVAACERVQKA
 AVTLARLSRDPDVAREAVRLSCMSRLIELCRSPSERNSSDAVLVACLAALRRLAGVCPGLQDSDFQLV
 QPRLVDSFLLCSNMEESFV

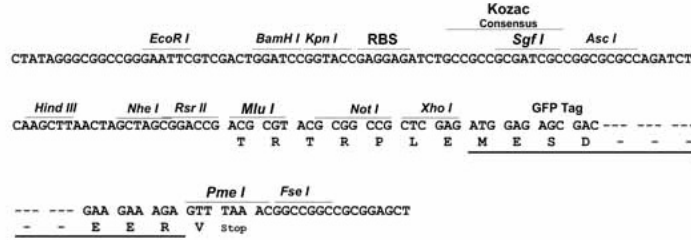
TRTRPLE – GFP Tag – V

Restriction Sites:

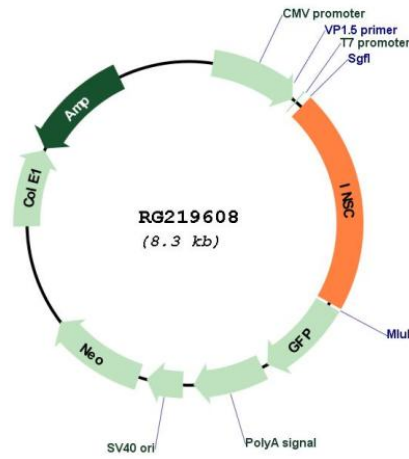
Sgfl-MluI

Cloning Scheme:

Cloning sites used for ORF Shutting:



Plasmid Map:



ACCN:

NM_001031853

ORF Size:	1737 bp
OTI Disclaimer:	The molecular sequence of this clone aligns with the gene accession number as a point of reference only. However, individual transcript sequences of the same gene can differ through naturally occurring variations (e.g. polymorphisms), each with its own valid existence. This clone is substantially in agreement with the reference, but a complete review of all prevailing variants is recommended prior to use. More info
OTI Annotation:	This clone was engineered to express the complete ORF with an expression tag. Expression varies depending on the nature of the gene.
Components:	The ORF clone is ion-exchange column purified and shipped in a 2D barcoded Matrix tube containing 10ug of transfection-ready, dried plasmid DNA (reconstitute with 100 ul of water).
Reconstitution Method:	<ol style="list-style-type: none">1. Centrifuge at 5,000xg for 5min.2. Carefully open the tube and add 100ul of sterile water to dissolve the DNA.3. Close the tube and incubate for 10 minutes at room temperature.4. Briefly vortex the tube and then do a quick spin (less than 5000xg) to concentrate the liquid at the bottom.5. Store the suspended plasmid at -20°C. The DNA is stable for at least one year from date of shipping when stored at -20°C.
RefSeq:	NM_001031853.3 , NP_001027024.3
RefSeq Size:	2970 bp
RefSeq ORF:	1740 bp
Locus ID:	387755
UniProt ID:	Q1MX18
Cytogenetics:	11p15.2
Gene Summary:	In Drosophila, neuroblasts divide asymmetrically into another neuroblast at the apical side and a smaller ganglion mother cell on the basal side. Cell polarization is precisely regulated by 2 apically localized multiprotein signaling complexes that are tethered by Inscuteable, which regulates their apical localization (Izaki et al., 2006 [PubMed 16458856]).[supplied by OMIM, Mar 2008]