

Product datasheet for **RG219597**

Chromosome X open reading frame 6 (MAMLD1) (NM_005491) Human Tagged ORF Clone

Product data:

Product Type:	Expression Plasmids
Product Name:	Chromosome X open reading frame 6 (MAMLD1) (NM_005491) Human Tagged ORF Clone
Tag:	TurboGFP
Symbol:	MAMLD1
Synonyms:	CG1; CXorf6; F18; HYSP2
Mammalian Cell Selection:	Neomycin
Vector:	pCMV6-AC-GFP (PS100010)
E. coli Selection:	Ampicillin (100 ug/mL)



[View online »](#)

ORF Nucleotide Sequence:

>RG219597 representing NM_005491
 Red=Cloning site Blue=ORF Green=Tags(s)

TTTTGTAATACGACTCACTATAGGGCGGCCGGGAATTCGTCGACTGGATCCGGTACCGAGGAGATCTGCC
 GCC**CGATCGCC**

ATGGATGACTGGAAAAGTCGGCTTGTAAATCAAGAGCATGCTTCCCATTTCGCCATGGTGGGAAATCGTC
 AGGAGCCCAGAAAAGCTCCAGGAATCGGGAAAGAAGCCCTCGTGGATGGAGGAAGAAGATTTATCTTTTCT
 CTACAAGAGCAGCCAGGAAGAAAGCATCAGGGAAGTGTAAAGAGGAGACAAGAAGAAGACCACTTCCAG
 TTTCCAGACATGGCTGATGGGGCTACCCTAATAAAAATTAAGAGGCCTTGCCTTGAAGATGTCACCCCTG
 CAATGGGCCAGGTGCTCATCTAGTACTGCTTGTGCAGAACTGCAGGTCCCTCCATTGACAATAAATCC
 TAGCCCTGCGGCTATGGGAGTGGCTGGCCAGTCTTACTGCTGGAGAATAACCCTATGAATGGCAACATC
 ATGGGCTCACCATTTGTAGTACCACAGACTACAGAAGTGGGACTGAAAGGGCCCACTGTTCTTACTATG
 AGAAAATCAACAGCGTCCCGCTGTAGACCAGGAGCTTCAAGAGCTGCTAGAGGAGCTCACAAAATTC
 AGACCTTCTCCAAATGAGCTAGATCTTGAGAAGATACTGGGACGAAGCCAGAAGGCCACTGGTTTTA
 GATCATCCCAGCAACCCTAAGCACAACCTCCCAAGCCTTCGGTTCAGATGTCACACTTGGAGAGCCTGG
 CTTCCAGCAAGGAGTTTGTCTTCTAGTTGCAGCCAAAGTACTGGCATGTCACTTCAGATCCCATCCTCCTC
 CACAGGGATCAGCTATTCGATTCCCTTCCACCAGTAAGCAGATAGTGTACCCGAGTTCTTCAATGGCAGAG
 TCCAAGAGCCAGGTCCAGGCCATGCTCCCTGTCGCTCTGCCCCCTTACCAGTGCCTCAGTGGCATCACG
 CCCACCAGCTGAAGGCGTTGGCAGCCAGCAAGCAGGGGTCTGCTACAAAGCAGCAAGGGCCACCCCCAG
 TTGGTCTGGTCTGCCTCCTCCAGGACTCTCTCCACCTTACCGCCAGTGCATCACCACACCCACCACCG
 CTGCCACTGCCACCACCACCCCCATTACGCCCCAGAGCCTCATGGTGTCTGCATGTCGTCCAATA
 CTTTGTGGGCTAGCACTCTCCGAGGCTCTCCCAATGCCCTTACTGTCAAGCATGACGTCCAGCAGCAATGC
 TGCCCTGGGGCCCGCCATGCCCTATGCTCCTGAGAAGCTCCCCAGCCCTGCTCTCACTCAACAGCCGCAG
 TTCGGCCCTCAGAGCTCCATTCTTGCCAACCTCATGTCCTCTACCATCAAACCCCTCAAGGACACCTGA
 TGTCTGCTCTGCCTGCCAGCAACCCTGGGCGTCCCCACCCTATCGCCAGAGAAGCTCTTAGCCAGG
 CTTGCCACAGCAGTCTTACCCACAGTGTTCCTGTATCCGAAGCCTCACTCCACCAGTAATCTTCTA
 AGCCAGCAACAGCAGCAGCAGCAGCAGCAGCAAGCAATGTGATCTTTAAGCCATAAGCAGCAACT
 CATCCAAAACCTGAGCATGATCATGCAGCAGGGGATGGCAAGCTCCAGCCAGGAGCCACGGAGCCATT
 TACTTTTGGCAACACCAAGCCCTTGTCCATTTTGTCTTCTGAGCCGGTCCCCAGAAGATGCCCTCCATG
 CCTACCACCTCTAGGCAGCCTTCCCTGCTCCACTACCTGCAGCAGCCGACACCAACGCAGGCCTCCTCAG
 CCACTGCCTCCTCCACGGCCACTGCCACCTTGACGCTGCAGCAGCAGCAGCAACAGCAGCAGCAGCC
 TGACCATTCTTATTCTTCTGCAGCAGATGATGCAGCAACCCAGCGTTTTTCAGCGATCAGTGGCCTCA
 GATTCCATGCCTGCTCTGCCAGACAGGGCTGTTGCCATCTGTTTGCATGGACTTCTGCAGCTAGCTCGG
 TGAAGCCCAGCATCAACACGGGAAGTCTTCACTAGCAGGCAAGATCCTCAGCCTGGAGACGTGTCACC
 GTCTAACATTACTCATGTAGACAAAGCCTGCAAGCTTGGGGAAGCCAGGCACCCCAAGTCCAGCCTCGGG
 CGACAGCCCCGCTCCTGCCAGGCCCTGGGGAGTGAAGCTTCTGCCCCGAGCTCCTTTGCTCATGAGC
 TGGCCCGAGTCACTCCTCGTACAGCACCTCAGAGGCAGCGCCCTGGGGCAGCTGGGATCCGAAGCCCTG
 GAGGCAGGTGCCCGCTCCACTACTGCCTAGCTGCCAGCCACAGCAAGAGGAACAGAGATCAGGTCTTAT
 GGCAATGACCCC

ACGCGTACGCGGCCGCTCGAG - GFP Tag - GTTTAA

Protein Sequence: >RG219597 representing NM_005491
 Red=Cloning site Green=Tags(s)

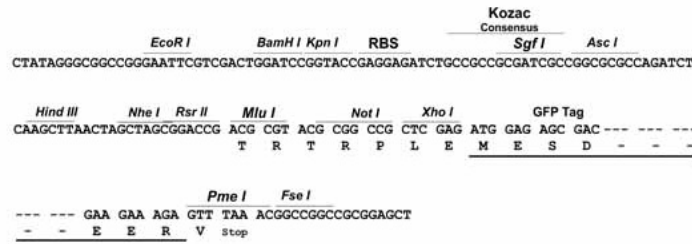
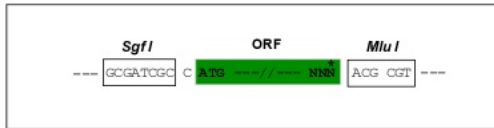
MDDWKSRLVIKSMPLPHFAMVGNRQEPKRLQESGKKPSWMEEDLSFLYKSSPGRKHQGTVKRRQEEDHFQ
 FPDMDAGGYPNKIKRPCLEDTVLTAMGPGAHPSTACAELQVPLTINPSAAMGVAGQSLLENNPMNGNI
 MGSPPFVVPQTTEVGLKGPTVPYIEKINSVPAVDQELQELLEELTKIQDPSPNELDLEKILGTKPEEPLVL
 DHPQATLSTTPKPSVQMSHLESASSKEFASSCSQVTGMSLQIPSSSTGISYSIPSTSKQIVSPSSSMAQ
 SKSQVQAML PVALPPLPVPQWHHAHLKALAASKQGSATKQQGTPSWSGLPPPGLSPPYRVPVSPHPPP
 LPLPPPPPPFSPQSLMVSCMSSNTLSGSTLRGSPNALLSSMTSSSNAALGPAMPYAPEKLPSPALTQQPQ
 FGPQSSILANLMSSTIKTPQGHLSALPASNPGSPPYRPEKLSSPGLPQQSFTPQCSLIRSLTPTSNLL
 SQQQQQQQQQANVIFKPISSNSKTL SMIMQQGMASSSPGATEPFTFGNTKPLSHFVSEPGPQKMP SM
 PTTSRQPSLLHYLQQPTPTQASSATASSTATATLQLQQQQQQQQPDHSSFLQMMQQPQRFQRSVAS
 DSMPALPRQGCCHLFAWTSAASSVKPQHGHNSFTRQDPQPGDVSPSNI THVDKACKLGEARHPQVSLG
 RQPPSCQALGSESFLPGSSF AHELARVTSYSTSEAAPWGSWDPKAWRQVPAPLLPSCDATARGTEIRSY
 GNDP

TRTRPLE - GFP Tag - V

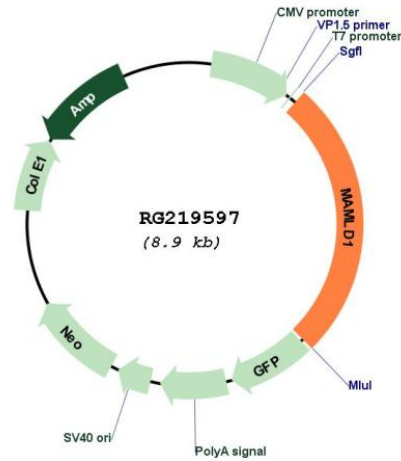
Restriction Sites: SgfI-MluI

Cloning Scheme:

Cloning sites used for ORF Shuttling:



Plasmid Map:



ACCN: NM_005491

ORF Size: 2322 bp

OTI Disclaimer: The molecular sequence of this clone aligns with the gene accession number as a point of reference only. However, individual transcript sequences of the same gene can differ through naturally occurring variations (e.g. polymorphisms), each with its own valid existence. This clone is substantially in agreement with the reference, but a complete review of all prevailing variants is recommended prior to use. [More info](#)

OTI Annotation: This clone was engineered to express the complete ORF with an expression tag. Expression varies depending on the nature of the gene.

Components: The ORF clone is ion-exchange column purified and shipped in a 2D barcoded Matrix tube containing 10ug of transfection-ready, dried plasmid DNA (reconstitute with 100 ul of water).

Reconstitution Method:

1. Centrifuge at 5,000xg for 5min.
2. Carefully open the tube and add 100ul of sterile water to dissolve the DNA.
3. Close the tube and incubate for 10 minutes at room temperature.
4. Briefly vortex the tube and then do a quick spin (less than 5000xg) to concentrate the liquid at the bottom.
5. Store the suspended plasmid at -20°C. The DNA is stable for at least one year from date of shipping when stored at -20°C.

RefSeq: [NM_005491.4](#), [NP_005482.2](#)

RefSeq Size: 4636 bp

RefSeq ORF: 2325 bp

Locus ID: 10046

UniProt ID: [Q13495](#)

Cytogenetics: Xq28

Gene Summary:

This gene encodes a mastermind-like domain containing protein. This protein may function as a transcriptional co-activator. Mutations in this gene are the cause of X-linked hypospadias type 2. Alternate splicing results in multiple transcript variants. [provided by RefSeq, Apr 2010]