

Product datasheet for **RG219571**

ZNF14 (NM_021030) Human Tagged ORF Clone

Product data:

Product Type:	Expression Plasmids
Product Name:	ZNF14 (NM_021030) Human Tagged ORF Clone
Tag:	TurboGFP
Symbol:	ZNF14
Synonyms:	GIOT-4; KOX6
Mammalian Cell Selection:	Neomycin
Vector:	pCMV6-AC-GFP (PS100010)
E. coli Selection:	Ampicillin (100 ug/mL)



[View online »](#)

ORF Nucleotide Sequence:

>RG219571 representing NM_021030
 Red=Cloning site Blue=ORF Green=Tags(s)

TTTTGTAATACGACTCACTATAGGGCGGCCGGAATTCGTCGACTGGATCCGGTACCGAGGAGATCTGCC
 GCC**CGCATCGCC**

ATGGACTCAGTCTCCTTTGAGGATGTGGCCGTGAACCTCACCTGGAGGAGTGGCCTTTGCTGGATTCTT
 CACAGAAAAAGCTCTATGAAGATGTGATGCAGGAGACCTTCAAAAACCTGGTTTGTCTAGGAAAAAGTG
 GGAAAGACCAGGACATTGAAGATGACCACAGAAACCAGGGGAAAAATCGAAGATGCATATGGTTGAGAGA
 CTCTGTGAAAGTAGAAGAGGTAGCAATGTGGAGAAACCACTAGCCAGATGCCAAATGTTAATATCAACA
 AGGAAACTTTTACTGGAGCAAACACATGAATGCAGCTTTTGTGGAAGAGACTTCATTCATCATTCTGTC
 CCTTAATAGGCACATGAGATCTCACACTGGACAGAAACCAATGAGTATCAGGAATATGAAAAGCAACCA
 TGTAAATGTAAGCAGTTGGGAAAACCTTCAGTTATCACCACTGCTTCGCAAACATGAAAGAAGCTCACA
 CTGGAGTGAAGCCCTATGAATGTAACAGTGTGGGAAAGCCTTTATATATTACCAGCCATTTCAAAGACA
 TGAAGGACTCATGCTGGACAGAAACCTATGAATGTAAGCAATGTGAAAAACCTTTATATATTACCAG
 TCTTTTCAAAAACATGCTCATACTGAAAGAAACCTATGAATGTAACAGTGTGGGAAAGCCTTTATAT
 GTTACCAATCTTTTCAAAGACACAAAAGGACTCACACTGGAGAGAAACCTATGAATGTAAGCAATGTGG
 TAAGGCTTTCAGTTGTCCACATACTTTGAACTCATGAAAGAAGCTCACACTGGAGAAAAACCTACAAA
 TGTAAAGAATGTGGTAAAGCCTTCAGTTTTCTCAGTTCTTTTGAAGGCATAAAAGGACTCATAGTGGAG
 AGAAACCTATGAATGTAAGAATGTGGAAAAGCCTTCTTTTATCTGCAAGCTTTCGAGCACATGTAAT
 AATACACACTGGGCTCGACCTTATAAATGTAAGAATGTGGAAAAGCCTTCAACTCTTCTAATTCCTGT
 CGAGTGCATGAAAGAAGCTCATATTGGAGAAAAACCATATGAATGTAACAGATGTGGCAAAATCATTAGTT
 GTCCATTTCTCTCGATTGCATGAAAGAAGCTCATACTGGAGAGAAACCTTATGAGTGAACAGTGTCA
 TAAAACCTTCAGTTTTTCAAGTTCCTTCGAGAACACGAAACAACCTCACACTGGAGAGAAACCTATGAA
 TGTAAACAATGTGGTAAAACCTTCAGTTTTTCAAGTTCCTTCAAAGACATGAAAGGACTACAATGCAG
 AGAAACCTATGAATGTAACAGTGTGGAAAAGCCTTCAGGTGTTCAAGTATTTTGAATTCATGAAAG
 GTCACACACTGGAGAGAAACCTATGAATGTAACAGTGTGGAAAAGTTTTTCATTCGTTCCAGTTCCTTT
 CGACTGCATGAAAGAACACACTGGAGAGAAACCTATGAATGTAACATGCGGTAAAACCTTCAGTT
 TTTCAAGTTCCTTCGAGAACATGAAAAAATTCACACTGGAAATAAGCCTTTGAGTGAAGCAATGTGG
 TAAGGCCCTTCCTTCGTTCCAGTCAAATTCGATTGCATGAAAGGACTCACACTGGAGAGAAACCGTATCAA
 TGTAAACAATGTGAAAAGCCTTCATTTCTCCAGTAAATTCGAATGCATGAGAGAAGCTCACACGGGAG
 AGAAACCTATCGATGTAACAATGTGGAAAAGCCTTCAGATTTTCAAGTCTGTTTCAAGTTCATGAAAG
 GTCTCACACTGGAGAGAAACCTATGAATGCAACAATGTGGAAAAGCCTTCATTTCTTCAGTCACTTT
 CGACTGCATGAAAGGACTCATATGGGAGAGAAAGTC

ACGCGTACGCGGCCGCTCGAG - GFP Tag - GTTTAA

Protein Sequence:

>RG219571 representing NM_021030
 Red=Cloning site Green=Tags(s)

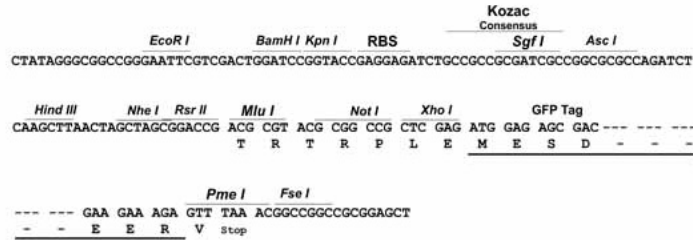
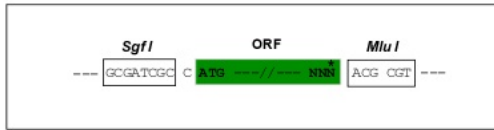
MDSVSFEDVAVNFTLEEWALLDSSQKLYEDVMQETFKNLVCLGKKWEDQDIEDDHRNQGNRRCHMVER
 LCESRRGSKCGETTSQMPNVNINKETFTGAKPHECSFCGRDFIHHSSLNRHMRSHGQKPNEYQEYEQP
 CKCKAVGKTF SYHHC FRKHERHTHTGVKPYECKQCGKAFIYYQPFQRHERTHAGQKPYECKQCGKTFIYYQ
 SFQKHAHTGKKPYECKQCGKAFICYQSFQRHKRTHHTGEKPYECKQCGKAFSCPTYFRTHERTHTGEKPYK
 CKECGKAFSFLSSFRRHKRTHSGEKPYECKEGKAFYASFRAHVIIHTGARPYKCKECKGAFNSNSC
 RVHERTHIGKPYECKRCKGKSFWSISLRLHERHTHTGEKPYECKQCHKTFSSSSLREHETHTHTGEKPYE
 CKQCGKTFSSSSLQRHERTHNAEKPYECKQCGKAFRCSSYFRIHERSHTGEKPYECKQCGKVFIRSSSF
 RLHERHTHTGEKPYECKLCKGKTFSSSSLREHEKIHTGNKPFECKQCGKAFLRSSQIRLHERHTHTGEKPYQ
 CKQCGKAFISSSKFRMHERHTHTGEKPYRCKQCGKAFRFSVRIHERSHTGEKPYECKQCGKAFISSSHF
 RLHERTHMGEKV

TRTRPLE - GFP Tag - V

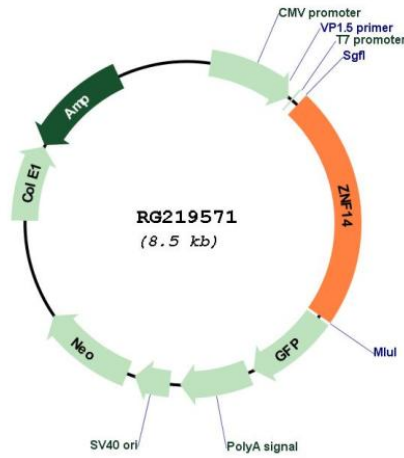
Restriction Sites: SgfI-MluI

Cloning Scheme:

Cloning sites used for ORF Shutting:



Plasmid Map:



ACCN: NM_021030

ORF Size: 1926 bp

OTI Disclaimer:	The molecular sequence of this clone aligns with the gene accession number as a point of reference only. However, individual transcript sequences of the same gene can differ through naturally occurring variations (e.g. polymorphisms), each with its own valid existence. This clone is substantially in agreement with the reference, but a complete review of all prevailing variants is recommended prior to use. More info
OTI Annotation:	This clone was engineered to express the complete ORF with an expression tag. Expression varies depending on the nature of the gene.
Components:	The ORF clone is ion-exchange column purified and shipped in a 2D barcoded Matrix tube containing 10ug of transfection-ready, dried plasmid DNA (reconstitute with 100 ul of water).
Reconstitution Method:	<ol style="list-style-type: none">1. Centrifuge at 5,000xg for 5min.2. Carefully open the tube and add 100ul of sterile water to dissolve the DNA.3. Close the tube and incubate for 10 minutes at room temperature.4. Briefly vortex the tube and then do a quick spin (less than 5000xg) to concentrate the liquid at the bottom.5. Store the suspended plasmid at -20°C. The DNA is stable for at least one year from date of shipping when stored at -20°C.
RefSeq:	NM_021030.3
RefSeq Size:	2967 bp
RefSeq ORF:	1929 bp
Locus ID:	7561
UniProt ID:	P17017
Cytogenetics:	19p13.11
Domains:	KRAB, zf-C2H2
Protein Families:	Transcription Factors
Gene Summary:	The protein encoded by this gene contains a zinc finger and a Kruppel-associated box (KRAB) domain. KRAB domain is known to be involved in the transcriptional repression of a number of zinc finger proteins. [provided by RefSeq, Jul 2008]