

Product datasheet for **RG219563**

ILF3 (NM_004516) Human Tagged ORF Clone

Product data:

Product Type:	Expression Plasmids
Product Name:	ILF3 (NM_004516) Human Tagged ORF Clone
Tag:	TurboGFP
Symbol:	ILF3
Synonyms:	CBTF; DRBF; DRBP76; MMP4; MPHOSPH4; MPP4; MPP4110; NF-AT-90; NF90; NF90a; NF90b; NF90c; NF90ctv; NF110; NF110b; NFAR; NFAR-1; NFAR-2; NFAR2; NFAR90; NFAR110; TCP80; TCP110
Mammalian Cell Selection:	Neomycin
Vector:	pCMV6-AC-GFP (PS100010)
E. coli Selection:	Ampicillin (100 ug/mL)



[View online »](#)

ORF Nucleotide Sequence:

>RG219563 representing NM_004516
 Red=Cloning site Blue=ORF Green=Tags(s)

TTTTGTAATACGACTCACTATAGGGCGGCCGGAATTCGTCGACTGGATCCGGTACCGAGGAGATCTGCC
 GCC**CGCATCGCC**

ATGCGTCCAATGCGAATTTTTGTGAATGATGACCGCCATGTGATGGCAAAGCATTCTTCGTTTATCCAA
 CACAAGAGGAGCTGGAGGCAGTCCAGAACATGGTGTCCCACACGAGCGGGCGCTCAAAGCTGTGTCCGA
 CTGGATAGACGAGCAGGAAAAGGGTAGCAGCGAGCAGGCAGAGTCCGATAACATGGATGTCCCCAGAG
 GACGACAGTAAAGAAGGGGCTGGGGAACAGAAGACGGAGCACATGACCAGAACCCTGCGGGGAGTGATGC
 GGGTGGGCTGGTGGCAAAGGGCTCTACTCAAGGGGACTTGGATCTGGAGCTGGTGTCTGTGTAA
 GGAGAAGCCACAACCGCCCTCTGGACAAGGTGGCCGACAACCTGGCCATCCAGCTTGTGTGTAAACA
 GAAGACAAGTACGAAATACTGCAATCTGTGACGATGTGCGATTGTGATAAAAAACACAAAAGAGCCTC
 CATTGTCCCTGACCATCCACCTGACATCCCTGTTGTGACAGAGAAGAAATGGAGAAAGTATTAGCTGGAGA
 AACGCTATCAGTCAACGACCCCCGGACGTTCTGGACAGGCAGAAATGCCTTGTGCCTTGGCGTCCCTC
 CGACACGCCAAGTGGTTCAGGCCAGAGCCAACGGGCTGAAGTCTTGTGTCATTGTGATCCGGGTCTTGA
 GGGACCTGTGCACTCGCGTGCACCTGGGGTCCCTCCGAGGCTGGCCTCTCGAGCTCCTGTGTGAGAA
 ATCCATTGGCACGGCCAACAGACCGATGGGTGCTGGCAGGCCCTGCGGAGAGTGTGGAGTGCCTGGCG
 TCGGGCATCGTGATGCCAGATGGTCTGGCATTATGACCCTTGTGAAAAAGAAGCCACTGATGCTATTG
 GGCATCTAGACAGACAGCAACGGGAAGATATCACACAGAGTGCAGCAGCAGCACTGCGGCTCGCTGCCTT
 CGGCCAGCTCCATAAAGTCTAGGCATGGACCTCTGCCTTCAAAGATGCCCAAGAAACCAAGAATGAA
 AACCCAGTGGACTACACCGTTGAGTCCCACCAAGCACCACTATGCCATTACGCCATGAAACGCCCAA
 TGGAGGAGGACGGGAGGAGAAGTCCGCCAGCAAAAAGAAGAAGATTGAGAAGAAAGAGGAGAAGGC
 AGAGCCCCCAGGCTATGAATGCCCTGATGCGGTTGAACCAGCTGAAGCCAGGGCTGCAGTACAAGCTG
 GTGTCCCAGACTGGGCCGTCATGCCCCATCTTACCATGTCTGTGGAGTTGATGGCAATTCATTTCG
 AGGCCTCTGGGCCTCCAAAAGACGGCCAAGCTGCACGTGGCCGTTAAGGTGTTACAGGACATGGGCTT
 GCCGACGGGTGCTGAAGGCAGGGACTCGAGCAAGGGGAGGACTCGGCTGAGGAGACCGAGGCGAAGCCA
 GCAGTGGTGGCCCTGCCCAAGTGTAGAAAGTGTCTCCACCCCTAGTGCAGGCTTCCCTCAGATGCCA
 CTGCCGAGCAGGGCCGATCCTGACAAAGCACGGCAAGAACCAGTCATGGAGCTGAACGAGAAGAGGCG
 TGGGCTCAAGTACGAGCTCATCTCCGAGACCGGGGACGCCACGACAAGCGCTTCGTGATGGAGGTCGAA
 GTGGATGGACAGAAGTCCAAGGTGCTGGTCCAACAAAAGGTGGCGAAGGCCTACGCTGCTTGTCTG
 CCCTAGAAAAGCTTTTCCCTGACACCCCTCTCGCCCTTGTGCAACAAAAGAAGAGAGCCCCAGTACC
 CGTCAGAGGGGGACCGAAATTTGCTGCTAAGCCACATAACCCTGGCTTCGGCATGGGAGGCCCATGCAC
 AACGAAGTCCCCCACCCTTCGAGGGCGGGGAAGAGGCGGGAGCATCCGGGGACGAGGGCGCG
 GGCGAGGATTTGGTGGCGCAACCATGGAGGCTACATGAATGCCGGTGTGGGTATGGAAGCTATGGGTA
 CGGAGGCAACTCGGCGACAGCAGGCTACAGTACTTTTTACAGACTGCTACGGCTATCATGATTTTGGG
 TCTTCC

ACGCGTACGCGGCCGCTCGAG - GFP Tag - GTTTAA

Protein Sequence: >RG219563 representing NM_004516
 Red=Cloning site Green=Tags(s)

MRPMRIFVNDRRHVMMAKSSVYPTQEELEAVQNMVSHTERALKAVSDWIDEQEKGSSSEQAESDNMDVPPE
 DDSKEGAGEQKTEHMTRTLRGVMRVGLVAKGLLLKGDLDLELVLLCKEKPTTALLDKVADNLAIQLAAVT
 EDKYEILQSVDDAAIVIKNTKEPPLSLTIHLTSPVVREEMEKVLGETLSVNDPPDVLDRQKLAALASL
 RHAKWFQARANGLKSCVIVIRVLRDLCTRVPTWGPLRGWPLELLCEKSIGTANRPMGAGEALRRVLECLA
 SGIVMPDGSYDPCEKEATDAIGHLDROREDITQSAQHALLRLAAFQGLHKVLGMDPLPSKMPKPKNE
 NPVDYTVQIPPSTTYAITPMKRPMEEDGEEKSPSKKKKIQKKEEKAEPQAMNALMRLNQLKPLQYKL
 VSQTGPHAPIFTMSVEVDGNSFEASGPSKKTAKLHVAVKVLQDMGLPTGAEGRDSSKGDSSAEETEAKP
 AVVAPAPVVEAVSTPSAAFPSDATAEQGPILTKHGKNPVMELNEKRRGLKYELISETGGSHDKRFVMEVE
 VDGQKFQAGSNKKVAKAYAALAALAEKLPDTPALDANKKKRAPVVRGGPKFAAKPHNPGFGMGGPMH
 NEVPPPNLRGRGRGGSIRGRGRGRGFGGANHGGYMNAGAGYGSYGYGGSATAGYSDFFTDCYGYHDFG
 SS

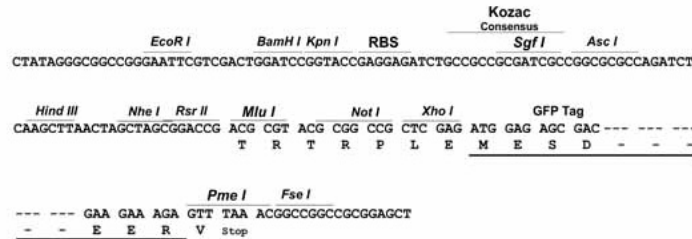
TRTRPLE - GFP Tag - V

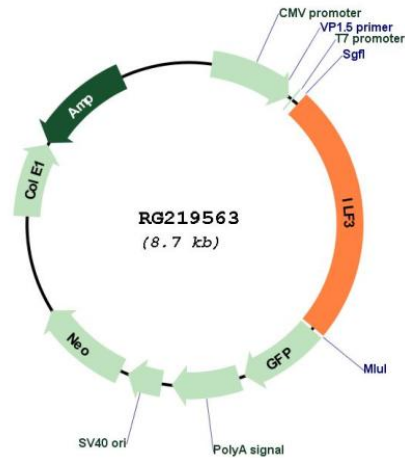
Restriction Sites:

SgfI-MluI

Cloning Scheme:

Cloning sites used for ORF Shutting:



Plasmid Map:


ACCN: NM_004516

ORF Size: 2106 bp

OTI Disclaimer: Due to the inherent nature of this plasmid, standard methods to replicate additional amounts of DNA in *E. coli* are highly likely to result in mutations and/or rearrangements. Therefore, OriGene does not guarantee the capability to replicate this plasmid DNA. Additional amounts of DNA can be purchased from OriGene with batch-specific, full-sequence verification at a reduced cost. Please contact our customer care team at custsupport@origene.com or by calling 301.340.3188 option 3 for pricing and delivery.

The molecular sequence of this clone aligns with the gene accession number as a point of reference only. However, individual transcript sequences of the same gene can differ through naturally occurring variations (e.g. polymorphisms), each with its own valid existence. This clone is substantially in agreement with the reference, but a complete review of all prevailing variants is recommended prior to use. [More info](#)

OTI Annotation: This clone was engineered to express the complete ORF with an expression tag. Expression varies depending on the nature of the gene.

Components: The ORF clone is ion-exchange column purified and shipped in a 2D barcoded Matrix tube containing 10ug of transfection-ready, dried plasmid DNA (reconstitute with 100 ul of water).

Reconstitution Method:

1. Centrifuge at 5,000xg for 5min.
2. Carefully open the tube and add 100ul of sterile water to dissolve the DNA.
3. Close the tube and incubate for 10 minutes at room temperature.
4. Briefly vortex the tube and then do a quick spin (less than 5000xg) to concentrate the liquid at the bottom.
5. Store the suspended plasmid at -20°C. The DNA is stable for at least one year from date of shipping when stored at -20°C.

RefSeq: [NM_004516.4](#)

RefSeq Size: 3745 bp

RefSeq ORF: 2109 bp

Locus ID: 3609

UniProt ID: [Q12906](#)

Cytogenetics: 19p13.2

Domains: DSRM, DZF

Protein Families: Druggable Genome, Transcription Factors

Gene Summary: This gene encodes a double-stranded RNA (dsRNA) binding protein that complexes with other proteins, dsRNAs, small noncoding RNAs, and mRNAs to regulate gene expression and stabilize mRNAs. This protein (NF90, ILF3) forms a heterodimer with a 45 kDa transcription factor (NF45, ILF2) required for T-cell expression of interleukin 2. This complex has been shown to affect the redistribution of nuclear mRNA to the cytoplasm. Knockdown of NF45 or NF90 protein retards cell growth, possibly by inhibition of mRNA stabilization. In contrast, an isoform (NF110) of this gene that is predominantly restricted to the nucleus has only minor effects on cell growth when its levels are reduced. Alternative splicing results in multiple transcript variants encoding distinct isoforms.[provided by RefSeq, Dec 2014]