

Product datasheet for **RG219525**

ZSWIM7 (NM_001042697) Human Tagged ORF Clone

Product data:

Product Type: Expression Plasmids
Product Name: ZSWIM7 (NM_001042697) Human Tagged ORF Clone
Tag: TurboGFP
Symbol: ZSWIM7
Synonyms: SWS1
Mammalian Cell Selection: Neomycin
Vector: pCMV6-AC-GFP (PS100010)
E. coli Selection: Ampicillin (100 ug/mL)
ORF Nucleotide Sequence: >RG219525 representing NM_001042697
 Red=Cloning site Blue=ORF Green=Tags(s)

TTTTGTAATACGACTCACTATAGGGCGGCCGGAATTCGTCGACTGGATCCGGTACCGAGGAGATCTGCC
GCC**CGATCGCC**

ATGGCCGTAGTGTGCCGGCGTTGTGGAGGAGCTCCTGAGCGAGATGGCGGGCGGCGGTGCAGGAGAGCG
CGCGAATTCCTGATGAATATCTGTTATCGCTGAAGTTTCTCTTTGGCTCATCAGCCACCCAGGCCTTGA
CCTAGTTGATCGACAGTCCATCACCTTAATCTCATCACCCAGTGAAGGCGTGTACCAGGTCCTTGA
AGTTCCAGTAAACATACACATGTTGGCTTCTGTCTACTGTTCATGTCCTGCATTTGCATTCTCAG
TGCTACGGAAGAGTGACAGCATCTGTGAAGCATCTCTTGGCAGTTTACCTGAGTCAGGTTATGAGGAC
CTGTCAGCAGCTAAGTGTCTCTGACAAGCAGTTGACTGACATATTATTGATGGAGAAGAAACAAGAAGCA

ACGCGTACGCGGCCGCTCGAG - GFP Tag - GTTTAA

Protein Sequence: >RG219525 representing NM_001042697
 Red=Cloning site Green=Tags(s)
 MAVVLPVVEELLSEMAAVQESARIPDEYLLSLKFLFGSSATQALDLVDRQSITLISSPSGRRVYQVLG
 SSKTYTCLASCHYCSPAFAFSVLRKSDSILCKHLLAVYLSQVMRTCQQLSVSDKQLTDILLMEKKQEA

TRTRPLE - GFP Tag - V

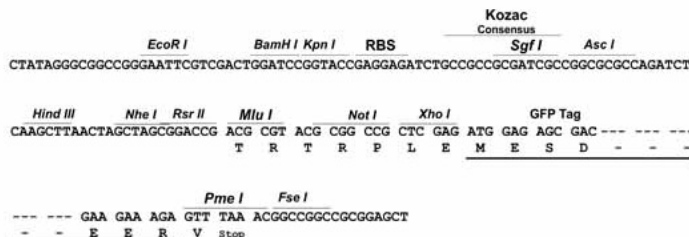
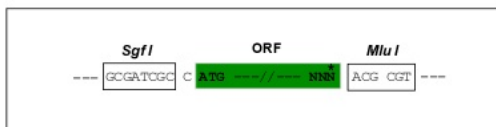
Restriction Sites: Sgfl-MluI



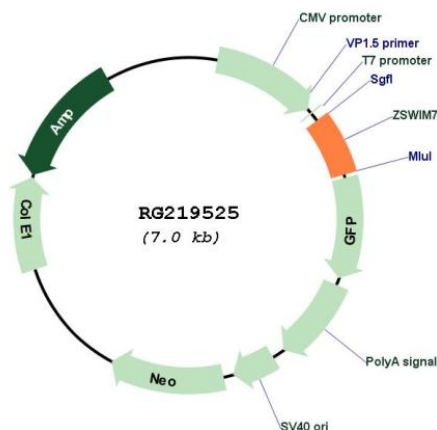
[View online »](#)

Cloning Scheme:

Cloning sites used for ORF Shutting:



Plasmid Map:



ACCN: NM_001042697

ORF Size: 420 bp

OTI Disclaimer: The molecular sequence of this clone aligns with the gene accession number as a point of reference only. However, individual transcript sequences of the same gene can differ through naturally occurring variations (e.g. polymorphisms), each with its own valid existence. This clone is substantially in agreement with the reference, but a complete review of all prevailing variants is recommended prior to use. [More info](#)

OTI Annotation:	This clone was engineered to express the complete ORF with an expression tag. Expression varies depending on the nature of the gene.
Components:	The ORF clone is ion-exchange column purified and shipped in a 2D barcoded Matrix tube containing 10ug of transfection-ready, dried plasmid DNA (reconstitute with 100 ul of water).
Reconstitution Method:	<ol style="list-style-type: none">1. Centrifuge at 5,000xg for 5min.2. Carefully open the tube and add 100ul of sterile water to dissolve the DNA.3. Close the tube and incubate for 10 minutes at room temperature.4. Briefly vortex the tube and then do a quick spin (less than 5000xg) to concentrate the liquid at the bottom.5. Store the suspended plasmid at -20°C. The DNA is stable for at least one year from date of shipping when stored at -20°C.
RefSeq:	<u>NM_001042697.2</u>
RefSeq Size:	2008 bp
RefSeq ORF:	423 bp
Locus ID:	125150
UniProt ID:	<u>Q19AV6</u>
Cytogenetics:	17p12
Gene Summary:	Involved in early stages of the homologous recombination repair (HRR) pathway of double-stranded DNA breaks arising during DNA replication or induced by DNA-damaging agents. [UniProtKB/Swiss-Prot Function]