

Product datasheet for **RG219493**

CACNA1G (NM_198376) Human Tagged ORF Clone

Product data:

Product Type:	Expression Plasmids
Product Name:	CACNA1G (NM_198376) Human Tagged ORF Clone
Tag:	TurboGFP
Symbol:	CACNA1G
Synonyms:	Ca(V)T.1; Cav3.1; NBR13; SCA42; SCA42ND
Mammalian Cell Selection:	Neomycin
Vector:	pCMV6-AC-GFP (PS100010)
E. coli Selection:	Ampicillin (100 ug/mL)
ORF Nucleotide Sequence:	>RG219493 representing NM_198376 Red=Cloning site Blue=ORF Green=Tags(s)

TTTTGTAATACGACTCACTATAGGGCGGCCGGAATTCGTCGACTGGATCCGGTACCGAGGAGATCTGCC
GCC**CGATCGCC**

ATGGACGAGGAGGAGGATGGAGCGGGCGCCGAGGAGTCGGGACAGCCCCGGAGCTTCATGCGGCTCAACG
ACCTGTGCGGGGGCCGGGGCCGGCCGGGGCGGGGTGTCAGCAGAAAAGGACCCGGGCGCGGACTCCGA
GGCGGAGGGGCTGCCGTACCCGGCGCTGGCCCCGGTGGTTTTCTCTACTTGAGCCAGGACAGCCGCCG
CGGAGCTGGTGTCTCCGACGGTCTGTAACCCCTGGTTTGAGCGCATCAGCATGTTGGTCATCCTTCTCA
ACTGCGTGACCCTGGGCATGTTCCGGCCATGCGAGGACATCGCCTGTGACTCCCAGCGCTGCCGGATCCT
GCAGGCCCTTGTGACTTCATCTTTGCCTTCTTTGCCGTGGAGATGGTGGTGAAGATGGTGGCCTTGGGC
ATCTTTGGGAAAAAGTGTACCTGGGAGACACTTGAACCCGGCTTGAATTTTTCATCGTCATCGCAGGGA
TGCTGGAGTACTCGTGGACCTGCAGAACGTCAGCTTCTCAGCTGTCAGGACAGTCCGTGTGCTGCGACC
GCTCAGGGCCATTAACCGGGTGCCAGCATGCGCATCCTGTGACGTTGCTGGATACGCTGCCCATG
CTGGGCAACGTCCTGCTGCTCTGCTTCTTCGTCTTCTTCATCTTCGGCATCGTCGGCGTCCAGCTGTGGG
CAGGGCTGCTTCGGAACCGATGCTTCTACCTGAGAATTCAGCCTCCCCCTGAGCGTGGACCTGGAGCG
CTATTACCAGACAGAGAACGAGGATGAGAGCCCCCTTCACTGCTCCAGCCACGCGAGAACGGCATGCGG
TCCTGCAAGAGCGTGCCACGCTGCGCGGGGACGGGGCGGTGGCCACCTTGGCTGACTATGAGG
CCTACAACAGCTCCAGCAACACCACCTGTGTCACTGGAACCACTACTACCAACTGCTCAGCGGGGA
GCACAACCCCTTCAAGGGCGCCATCAACTTTGACAACATTGGCTATGCCTGGATCGCCATCTTCCAGGTC
ATCAGCTGGAGGGCTGGGTCGACATCATGTAATTTGTGATGGATGCTCATTCTTCTACAATTTTCATCT
ACTTCATCCTCCTCATCATCGTGGGCTCCTTCTTCATGATCAACCTGTGCTGGTGGTATTGCCACGCA
GTTCTCAGAGACCAAGCAGCGGAAAGCCAGCTGATGCGGGAGCAGCGTGTGCGGTTCTGTCCAACGCC
AGCACCCTGGCTAGCTTCTGTAGCCCGGACGCTGCTATGAGGAGCTGCTCAAGTACCTGGTGTACATCC
TTCGTAAGGCAGCCCGCAGGCTGGCTCAGGTCTCTCGGGCAGCAGGTGTGCGGGTGGGCTGCTCAGCAG
CCCAGCACCCCTCGGGGGCCAGGAGACCAGCCAGCAGCAGCTGCTCTGCTCCACCGCCGCTATCC



[View online >](#)

GTCCACCACCTGGTGCACCACCACCACCACCATCACCACCACTACCACCTGGGCAATGGGACGCTCAGGG
 CCCCCGGGCCAGCCCGGAGATCCAGGACAGGGATGCCAATGGGTCCC GCCGGCTCATGCTGCCACCACC
 CTCGACGCCTGCCTCTCCGGGGCCCCCTGGTGGCGCAGAGTCTGTGCACAGCTTCTACCATGCCGAC
 TGCCACTTAGAGCCAGTCCGCTGCCAGGCGCCCCCTCCAGGTCCCCATCTGAGGCATCCGGCAGGACTG
 TGGGCAGCGGGAAGGTGTATCCCACCGTGCACACCAGCCCTCCACCGGAGACGCTGAAGGAGAAGGCACT
 AGTAGAGTGGCTGCCAGCTCTGGGCCCAACCCTCACCAGCTCAACATCCCACCCGGGCCCTACAGC
 TCCATGGACAAGCTGCTGGAGACACAGAGTACAGGTGCCTGCCAAAGCTTTGCAAGATCTCCAGCCCTT
 GCTTGAAAGCAGACAGTGGAGCCTGTGGTCCAGACAGCTGCCCTACTGTGCCGGCCGGGGCAGGGGA
 GGTGGAGCTCGCCGACCTGAAATGCCTGACTCAGACAGCGAGGCAAGTTATGAGTTCACACAGGATGCC
 CAGCACAGCGACCTCCGGGACCCCCACAGCCGGCGGAACGGAGCCTGGGCCAGATGCAGAGCCCAGCT
 CTGTGCTGGCCTTCTGGAGGTAATCTGTGACACCTTCCGAAAGATTGTGGACAGCAAGTACTTTGGCCG
 GGGAAATCATGATCGCCATCCTGGTCAACACACTCAGCATGGGCATCGAATACCACGAGCAGCCCAGGAG
 CTTACCAACGCCCTAGAAATCAGCAACATCGTCTTACCAGCCTCTTGGCCTGGAGATGCTGCTGAAGC
 TGCTTGTGTATGGTCCCTTTGGTACATCAAGAATCCCTACAACATCTTCGATGGTGTATTGTGGTGT
 CAGCGTGTGGGAGATCGTGGGCCAGCAGGGGGCGGCCTGTGCGTGTGCGGACCTTCCGCTGATGCGT
 GTGCTGAAGCTGGTGCCTTCTGCCGGCGCTGCAGCGGAGCTGGTGGTGTCTATGAAGACCATGGACA
 ACGTGGCCACCTTCTGCATGCTGCTTATGCTCTTCATCTTCAGCATCCTGGGCATGCATCTCTT
 CGGCTGCAAGTTTGCCTCTGAGCGGGATGGGGACACCCTGCCAGACCGGAAGAAATTTGACTCCTTGCTC
 TGGGCCATCGTCACTGTCTTTCAGATCTGACCCAGGAGGACTGGAACAAAGTCTCTACAATGGTATGG
 CCTCCACGTGCTCCTGGGCGGCCCTTATTTTATTGCCCCATGACCTTCGGCAACTACGTGCTCTTCAA
 TTTGCTGGTCGCCATTCTGGTGGAGGGCTCCAGGCGGAGGGAGATGCCAACAAGTCCGAATCAGAGCCC
 GATTTCTTCTACCCAGCCTGGATGGTGTGGGACAGGAAGAAGTGTGGCCTTGGTGTCCCTGGGAG
 AGCACCAGGAGCTGCGGAAGAGCCTGCTGCCCTCTCATCATCCACAGCGCCACACCCATGTCGCT
 GCCAAGAGCACCAGCAGGGCCCTGGGCGAGGCGCTGGGCCCTGCGTTCGCGCCGCACAGCAGCAGCGGG
 TCGGCAGAGCCTGGGGCGGCCACGAGATGAAGTACCAGCCAGCGCCCGAGCTCTCCGCACAGCCCT
 GGAGCGTGAAGCAGCTGGACCAGCAGGCGCTCCAGCCGGAACAGCCTCGGCCGTGCACCCAGCCTGAA
 GCGGAGAAGCCCAAGTGGAGAGCGGGCGTCCCTGTTGTGCGGAGAAGGCCAGGAGAGCCAGGATGAAGAG
 GAGAGCTCAGAAGAGGAGCGGGCCAGCCCTGCGGGCAGTGACCATCGCCACAGGGGGTCCCTGGAGCGGG
 AGGCCAAGAGTTCCTTTGACCTGCCAGACACACTGCAGGTGCCAGGGCTGCATCGCACTGCCAGTGGCCG
 AGGCTCTGCTTCTGAGCACCAGGACTGCAATGGCAAGTCCGCTTACGGGCGCTGGCCCGGGCCCTGCGG
 CCTGATGACCCCCACTGGATGGGGATGACGCCGATGACGAGGGCAACCTGAGCAAGGGGAACGGGTCC
 GCGCGTGGATCCGAGCCGACTCCCTGCCTGCTGCTCGAGCGAGACTCCTGGTCAAGCCTACATCTCCC
 TCCTCAGTCCAGGTTCCGCTCCTGTGTACCCGGATCATCACCCACAAGATGTTCCAGCAGTGGTCCCT
 GTCATCATCTTCTTAAGTGCATCACCATCGCCATGGAGCGCCCCAAAATTGACCCCCACAGCGTGAAC
 GCATCTTCTGACCTCTCCAATTACATCTTACCAGCAGTCTTTCTGGTGAAATGACAGTGAAGGTGGT
 GGCAGTGGGCTGGTGTTCGGGGAGCAGGCGTACCTGCGGAGCAGTTGGAACGTGCTGGACGGGCTGTTG
 GTGCTCATCTCCGTCATCGACATTTCTGGTGTCCATGGTCTTGCAGCGGCACCAAGATCCTGGGCATGC
 TGAGGGTGTGCGGCTGCTGCGGACCCTGCGCCGCTCAGGGTGTATCAGCCGGGCGCAGGGGCTGAAGCT
 GGTGGTGGAGACGCTGATGTCCTCACTGAAACCCATCGGCAACATTGTAGTATCTGCTGTGCCTTCTT
 ATCATTTTCGGCATCTTGGGGTGCAGCTCTTCAAAGGGAAGTTTTTCGTGTGCCAGGGCGAGGATACCA
 GGAACATCACCAATAAATCGGACTGTGCCGAGGCCAGTTACCGGTGGGTCCGGCACAAGTACAACCTTGA
 CAACCTTGGCCAGGCCCTGATGTCCCTGTTGTTTTGGCCTCAAAGGATGGTTGGGTGGACATCATGTAC
 GATGGGCTGGATGCTGTGGGCGTGGACCAGCAGCCATCATGAACCACAACCCCTGGATGCTGCTGACT
 TCATCTCGTTCCTGCTCATTGTGGCCTTCTTGTCTGAACATGTTTGTGGGTGTGGTGGGAGAAGT
 CCACAAGTGTCCGAGCACCAGGAGGAAGAGGAGGCCCGCGGGGAGGAGAAGCGCCTACGAAGACTG
 GAGAAAAAGAGAAGGAGTAAGGAGAAGCAGATGGCTGAAGCCAGTGCAAACCTTACTACTCCGACTACT
 CCCGCTTCCGGCTCCTCGTCCACCATTGTGCACCAGCCACTACCTGGACCTTTCATCACAGGTGTCT
 CCGGCTGAACGTGGTACCATGGCCATGGAGCACTACCAGCAGCCCAAGATTCTGGATGAGGCTCTGAAG
 ATCTGCAACTACATCTTCACTGTCTTTGTCTTGGAGTCAAGTTTTCAAACCTTGTGGCCTTTGGTTCC
 GTCGGTCTTCCAGGACAGGTGGAACAGCTGGACCTGGCCATTGTGCTGCTGTCCATCATGGGCATCAC
 GCTGGAGGAAATCGAGGTCAACGCCCTCGTGCCTCAACCCACCATCATCCGCATCATGAGGGTGTG
 CGCATTGCCCCAGTGTGAAGCTGTGAAGATGGCTGTGGGCATGCGGGCGCTGCTGGACACGGTGTATGC

AGGCCCTGCCCCAGGTGGGGAACCTGGGACTTCTCTTCATGTTGTTGTTTTTCATCTTTGCAGCTCTGGG
CGTGGAGCTCTTTGGAGACCTGGAGTGTGACGAGACACCCCCTGTGAGGGCCTGGGCCGTATGCCACC
TTTCGGAACTTTGGCATGGCCTTCTAACCCCTTCCGAGTCTCCACAGGTGACAATTGGAATGGCATT
TGAAGGACACCCCTCCGGGACTGTGACCAGGAGTCCACCTGCTACAACACGGTCATCTCGCCTATCTACTT
TGTGTCCTTCGTGCTGACGGCCAGTTCGTGCTAGTCAACGTGGTGATCGCCGTGCTGATGAAGCACCTG
GAGGAGAGCAACAAGGAGGCCAAGGAGGAGGCCGAGCTAGAGGCTGAGCTGGAGCTGGAGATGAAGACCC
TCAGCCCCAGCCCCACTCGCCACTGGGCAGCCCCTTCTCTGGCCTGGGGTCGAGGGCCCCGACAGCCC
CGACAGCCCCAAGCCTGGGGCTCTGCACCCAGCGGCCACGCGAGATCAGCCTCCCACTTTTCCCTGGAG
CACCCCACGATGCAGCCCCACCCACGGAGCTGCCAGGACCAGACTTACTGACTGTGCGGAAGTCTGGGG
TCAGCCGAACGCACTCTCTGCCAATGACAGCTACATGTGTGCGCATGGGAGCACTGCCGAGGGGCCCT
GGGACACAGGGGCTGGGGCTCCCCAAGCTCAGTCAGGCTCCGTCTTGTCCGTTCACTCCAGCCAGCA
GATACCAGCTACATCCTGCAGCTTCCCAAAGATGCACCTCATCTGCTCCAGCCCCACAGCGCCCCAACCT
GGGGCACCATCCCCAACTGCCCCACCAGGACGCTCCCTTTGGCTCAGAGGCCACTCAGGCGCCAGGC
AGCAATAAGGACTGACTCCTTGACGTTTCCAGGCTGGGCAGCCGGAAGACCTGCTGGCAGAGGAGGAG
CCCCATCCCCACGGGACCTGAAGAAGTGTACAGCGTGGAGGCCAGAGCTGCCAGCGCCGGCCTACGT
CCTGGCTGGATGAGCAGAGGAGACTCTATCGCCGTGAGTGCCTGGACAGCGGCTCCCAACCCACCT
GGGCACAGACCCCTTAACCTTGGGGGCCAGCCTCTTGGGGGGCCTGGGAGCCGGCCCAAGAAAAACTC
AGCCCGCCTAGTATCACCATAGACCCCCCGAGAGCCAAGGTCTCGGACCCCGCCAGCCCTGGTATCT
GCCTCCGAGGAGGGCTCCGTCCAGGACTCCAAGGATCCCTTGGCCTCTGGCCCCCTGACAGCATGGC
TGCTCGCCCTCCCCAAGAAAGATGTGCTGAGTCTCTCCGTTTATCTCTGACCCAGCAGACCTGGAC
CCC

ACGCGTACGCGGCCGCTCGAG - GFP Tag - GTTTAA

Protein Sequence: >RG219493 representing NM_198376
 Red=Cloning site Green=Tags(s)

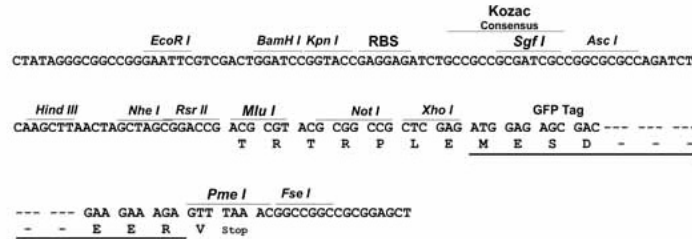
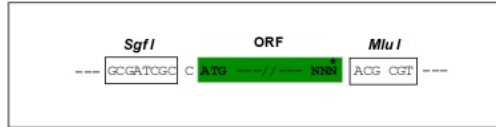
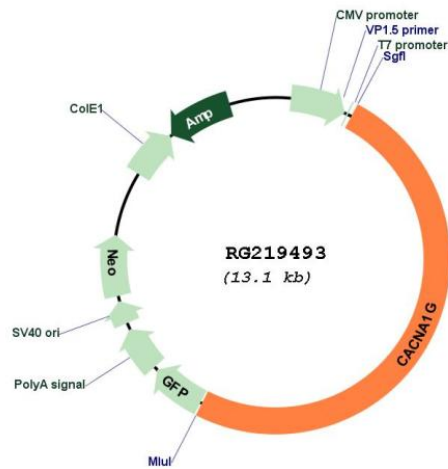
MDEEDGAGAEESGQPRFSMRLNDLSGAGGRPGPGSAEKDPGSADSEAEGLPYPALAPVVFYLSQDSRP
 RSWCLRTVCNPWFERISMLVILLNCVTLMGFRPCEDIACDSQRCRILQAFDDFIFAFFAVEMVVKMVALG
 IFGKKCYLGDTWNRLDFFIVIAGMLEYSLDLQNVSFSAVRTVRVLRPLRAINRVPSMRILVTLLEDLTPM
 LGNVLLLCFFVFFIFGI VGVQLWAGLLRNRCFLPENFSLPLSVDLERYYTENEDESPFICSQPRENGMR
 SCRSVPTLRGDGGGPPCGLDYEAYNSSNTTCVNNWQYYTNC SAGEHNPFKGAINFNDI GYAWIAIFQV
 ITLEGWVDIMYFVMDAHSFYNF IYFILLIIVGSFFMINLCLVVIATQFSETKQRESQLMREQRVFRLSNA
 STLASFSEPGSCYEELLYLVYILRKAARRLAQVSRAAGVRVGLLSSPAPLGGQETQPSSSCSRSHRRLS
 VHHLVHHHHHHHHYHLGNGTLRAPRASPEIQDRDANGSRRLMLPPPSTPALSGAPPGGAESVHSFYHAD
 CHLEPVRCAQAPPRSPSEASGRTVGSGKVVYPTVHTSPPPETLKEKALVEVAASSGPPTL TSLNIPPGPYS
 SMHKLLETQSTGACQSSCKISSPCLKADSGACGPDSCPYCARAGAGEVELADREMPDSDSEAVYEFQDA
 QHSDLRDPHSRRQRSLGPAEPSSVLAFWRLICDTRFKIVDSKYFGRGIMIAILVNTLSMGIEYHEQPEE
 LTNALEISNIVFTSLFALEMLLKL VYGPFYIKNPYINIFDGVIVVISVWEIVGQGGGLSVLRTFRMLR
 VLKLVRFALPQRQLVVLMTMDNVATFCMLLMFLIFIFISILGMHLFGCKFASERDGTLPDRKNFDSLL
 WAIIVTVFQILTQEDWNKVL YNGMASTSSWAALYFIALMTFGNYVLFNLLVAILVEGFQAEGDANKSESEP
 DFFSPSLDGDGDRKKCLALVSLGEHPELRKSLPLPIIHTAATPMSLPKSTSTGLGEALGPASRRTSSSG
 SAEPGAAHEMKSPPSARSSPHSPWSAASWTSRRSSRNSLGRAPSLKRRSPSGERRSLLSGEQESQDEE
 ESSEERASPAGSDHRRHRSLEREAKSSFDLPDTLQVPLHRTASGRGSAEHQCNGKSASGRLARALR
 PDDPPLDGDADDEGNLSKGERVRAWIRARLPACCLERDSWSAYIFPPQSRFRLCHR IITHKMFHDHVVL
 VIFLNCITIAMERPKIDPHSAERIFLTL SNYIFTAVFLAEMTVKVVVALGWCFGEQAYLRSSWNVLDGLL
 VLSVIDILVSMVSDSGTKILGMLRVLRLRRLRPLRVI SRAQGLKLVVETLMSSLKPIGNIVVICAFF
 IIFGILGVQLFKGKFFVCQGEDTRNITNKSDCAEAS YRWRHKYNFDNLGQALMSL FVLASKDGWVDIMY
 DGLDAVGVDQQPI MNHNPWMLLYFISFLLI VAFFVLNMFVGVVVENFHKCRQH QEEEEARRREEKRLRRL
 EKKRRSKEQMAEAQCKPYSDYSRFRLLVHHLCTSHYLDL FITGVIGLNVVTMAMEHYQQPQILDEALK
 ICNYIFTVIFVLESVFKLVAFGFRRFFQDRWNQLDLAIVLLSIMGITLEEIEVNASLPINPTIIRIMRVL
 RIARVLKLLKMAVGMRALLDTVMQALPQVGNLGLL FMLFFIFAALGVELFGDLECDETHPCEGLGRHAT
 FRNFGMAFLTLFRVSTGDNWNGIMKDTLRDCDQESTCYNTVISPIYFVSFVLT AQFVLVNVVIAVLMKHL
 EESNKEAKEEAELAELEEMKTLSPQPHSPLGSPFLWPGVEGPDSPDSPKPGALHPAAHARSASHFSLE
 HPTMQPHPTELPGPDLLTVRKSGVSRTHSLPNDSYMCRHGSTAEGPLGHRGWGLPKAQSGSVL SVHSQPA
 DTSYILQLPKDAPHLLQPHSAPTWTGIPKLP PPGRSPLAQRPLRRQAAIRTDSLDVQGLGSREDLLAEE
 PPSPRDLKCYVSAEQSQRRPTSWLDEQRHSIAVSCLDSGSQPHLGTDP SNLGGQPLGGPGSRPKKKL
 SPPSITIDPPESQGPRTPPSPGICLRRRAPSSDSK DPLASGPPDSMAASPSPKKDVLSL SGLSSDPADL
 P

TRTRPLE - GFP Tag - V

Restriction Sites: SgfI-MluI

Cloning Scheme:

Cloning sites used for ORF Shutting:


Plasmid Map:

ACCN:

NM_198376

ORF Size:

6513 bp

OTI Disclaimer:

The molecular sequence of this clone aligns with the gene accession number as a point of reference only. However, individual transcript sequences of the same gene can differ through naturally occurring variations (e.g. polymorphisms), each with its own valid existence. This clone is substantially in agreement with the reference, but a complete review of all prevailing variants is recommended prior to use. [More info](#)

OTI Annotation:

This clone was engineered to express the complete ORF with an expression tag. Expression varies depending on the nature of the gene.

Components:	The ORF clone is ion-exchange column purified and shipped in a 2D barcoded Matrix tube containing 10ug of transfection-ready, dried plasmid DNA (reconstitute with 100 ul of water).
Reconstitution Method:	<ol style="list-style-type: none">1. Centrifuge at 5,000xg for 5min.2. Carefully open the tube and add 100ul of sterile water to dissolve the DNA.3. Close the tube and incubate for 10 minutes at room temperature.4. Briefly vortex the tube and then do a quick spin (less than 5000xg) to concentrate the liquid at the bottom.5. Store the suspended plasmid at -20°C. The DNA is stable for at least one year from date of shipping when stored at -20°C.
RefSeq:	<u>NM_198376.3</u>
RefSeq Size:	7646 bp
RefSeq ORF:	6516 bp
Locus ID:	8913
UniProt ID:	<u>O43497</u>
Cytogenetics:	17q21.33
Protein Families:	Druggable Genome, Ion Channels: Calcium, Transmembrane
Protein Pathways:	Calcium signaling pathway, MAPK signaling pathway, Type II diabetes mellitus
Gene Summary:	Voltage-sensitive calcium channels mediate the entry of calcium ions into excitable cells, and are also involved in a variety of calcium-dependent processes, including muscle contraction, hormone or neurotransmitter release, gene expression, cell motility, cell division, and cell death. This gene encodes a T-type, low-voltage activated calcium channel. The T-type channels generate currents that are both transient, owing to fast inactivation, and tiny, owing to small conductance. T-type channels are thought to be involved in pacemaker activity, low-threshold calcium spikes, neuronal oscillations and resonance, and rebound burst firing. Many alternatively spliced transcript variants encoding different isoforms have been described for this gene. [provided by RefSeq, Sep 2011]