

Product datasheet for **RG219480**

TMEM185B (NR_000034) Human Tagged ORF Clone

Product data:

Product Type: Expression Plasmids
Product Name: TMEM185B (NR_000034) Human Tagged ORF Clone
Tag: TurboGFP
Symbol: TMEM185B
Synonyms: FAM11B; FLJ20979
Mammalian Cell Selection: Neomycin
Vector: pCMV6-AC-GFP (PS100010)
E. coli Selection: Ampicillin (100 ug/mL)
ORF Nucleotide Sequence: >RG219480 representing NR_000034
 Red=Cloning site Blue=ORF Green=Tags(s)

TTTTGTAATACGACTCACTATAGGGCGCCGGGAATTCGTCGACTGGATCCGGTACCGAGGAGATCTGCC
 GCC**CGATCGCC**

ATGAACCCAGGGCCTGTTCCAGGACTCAACCCAGTAAGTTTCTCATCTACACCTGCCTGCTGCTCT
 TCTCGGTGCTGCTGCCCCCGCCTGGACGGCATCATCCAATGGAGCTACTGGCCGTCTTTGCCCCAT
 ATGGCTGTGGAAGCTTCTAGTCGTCGACGGCGCCTCCGTGGCGCGGGCCTTTGGCCCGCAACCCCTCGC
 TACCGCACCGAGGAGAGGCCTGTGTGGAGTTCAAAGCCATGCTGATCGCTGTGGGCATCCACCTGCTGC
 TGCTCATGTTTGAAGTCTGGTCTGCGACAGGGTGGAGAGGGGCACCCACTTCTGGCTGCTGGTCTTCAT
 GCCTCTCTTCTCGTGTCCCCCGTGTCCGTGGCTGCCTGCGTCTGGGGCTTTCGACACGATAGGTCGCTG
 GAGCTGGAGATCCTGTGCTCGGTCAACATCCTGCAGTTTCACTTCATCGCCCTAAAGCTGGACAGGATTA
 TTTACTGGCCGTGGCTGGTGGTGTGTTGTGCCCTGTGGATCCTCATGTCGTTCTTTGCCTGGTCTGCTCT
 CTATTACATCGTCTGGTCCCTCCTGTTCCCTGCGGTCCCTGGATGTGGTTGCCGAGCAGCGGAGAACACAC
 GTGACCATGGCTATCAGTTGGATAACGATTGTCGTCGCTCTGCTCACTTTTGGAGTCTGCTGGTTCACA
 GATTGGATGGCCACAATACATTTCTCCTACGTCTCCATATTTGTCCCCCTTTGGCTTTCTTACTAAGTTT
 AATGGCCACAACATTTAGGCGAAAGGGGGCAATCATTGGTGGTTGGCATTCCGAGAGACTTCTGTCAG
 TTTCTGCTTGAATTTTCCATTTTAAAGAGAATATGGGAACATTTTCATATGATCTCCATCAGGAAGATA
 GTGAAGATGCTGAAGAAACATCAGTCCAGAAAGCTCCGAAAATTGCTCCAATATTTGGAAAAGAGGCCAG
 AGTAGTTATAACCCAGAGCCCTGGGAAATACGTTCCCCCCCCCTCCAAGTTAAATATTGATATGCCAGAT

ACGCGTACGCGGCCGCTCGAG - GFP Tag - GTTTAA



[View online »](#)

Protein Sequence: >RG219480 representing NR_000034
 Red=Cloning site Green=Tags(s)

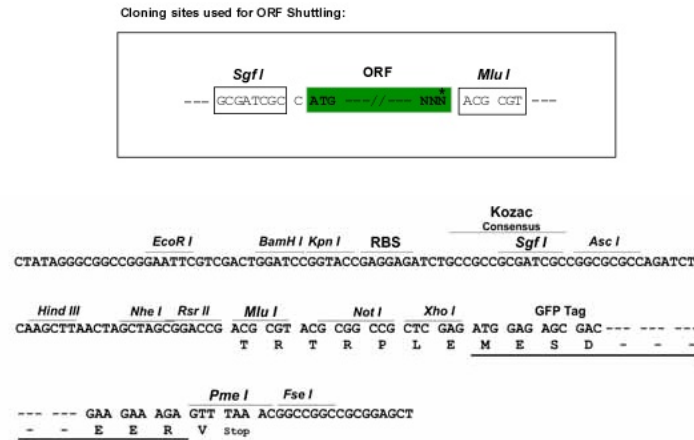
MNPRGLFQDFNPSKFLIYTCLLLFSVLLPLRLDGIQWSYWAVFAPIWLKLLVVAGASVGAGVWVARNPR
 YRTEGEACVEFKAMLIAVGIHLLLMFEVLVCDRVERGTHFWLLVFMPLFFVSPVSAACVWGRHDSL
 ELEILCSVNILQFIFIALKLDRIIHWPLVVFVPLWILMSFLCLVLYIYVWSLLFLRSLDVAEQRRTH
 VTMAISWITIVVPLLTFEVLVHRLDGHNTFSYVSIFVPLWLSLLTLMATTFRRKGGNHWWFGIRRDFCQ
 FLLEIFPFLREYGNISYDLHHEDEDAEETSVPKPIAPIFGKKARVITQSPGKYVPPPKLNIDMPD

TRTRPLE - GFP Tag - V

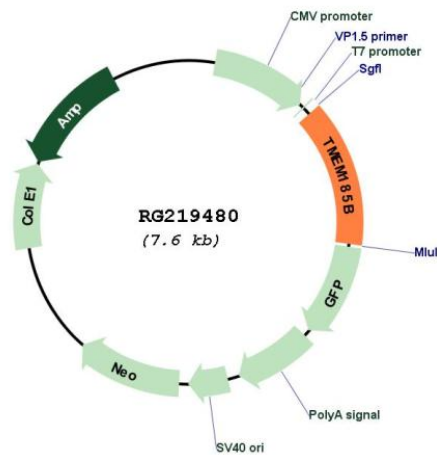
Restriction Sites:

SgfI-MluI

Cloning Scheme:



Plasmid Map:



ACCN: NR_000034

ORF Size: 657 bp

OTI Disclaimer:	The molecular sequence of this clone aligns with the gene accession number as a point of reference only. However, individual transcript sequences of the same gene can differ through naturally occurring variations (e.g. polymorphisms), each with its own valid existence. This clone is substantially in agreement with the reference, but a complete review of all prevailing variants is recommended prior to use. More info
OTI Annotation:	This clone was engineered to express the complete ORF with an expression tag. Expression varies depending on the nature of the gene.
Components:	The ORF clone is ion-exchange column purified and shipped in a 2D barcoded Matrix tube containing 10ug of transfection-ready, dried plasmid DNA (reconstitute with 100 ul of water).
Reconstitution Method:	<ol style="list-style-type: none">1. Centrifuge at 5,000xg for 5min.2. Carefully open the tube and add 100ul of sterile water to dissolve the DNA.3. Close the tube and incubate for 10 minutes at room temperature.4. Briefly vortex the tube and then do a quick spin (less than 5000xg) to concentrate the liquid at the bottom.5. Store the suspended plasmid at -20°C. The DNA is stable for at least one year from date of shipping when stored at -20°C.
RefSeq:	NR_000034.1
RefSeq Size:	2131 bp
RefSeq ORF:	1049 bp
Locus ID:	79134
Cytogenetics:	2q14.2