

## Product datasheet for **RG219423**

### AP4 (REPIN1) (NM\_001099695) Human Tagged ORF Clone

#### Product data:

Product Type:	Expression Plasmids
Product Name:	AP4 (REPIN1) (NM_001099695) Human Tagged ORF Clone
Tag:	TurboGFP
Symbol:	REPIN1
Synonyms:	AP4; RIP60; Zfp464; ZNF464
Mammalian Cell Selection:	Neomycin
Vector:	pCMV6-AC-GFP (PS100010)
E. coli Selection:	Ampicillin (100 ug/mL)



[View online »](#)

**ORF Nucleotide Sequence:**

>RG219423 representing NM\_001099695  
 Red=Cloning site Blue=ORF Green=Tags(s)

TTTTGTAATACGACTCACTATAGGGCGGCCGGAATTCGTCGACTGGATCCGGTACCGAGGAGATCTGCC  
 GCC**GCGATCGCC**

ATGGGGATAGGGGTGCTTTTATTACTGCAGTTTTCTCTAACACCTGGGGCTACCGAGTGTGGCCGAA  
 GCAGGCGCTGCAGCCCGGAAGTATCCCCAGGAACATCCCCAAGAGGAGCTGAAAAAGCCTCATCCCCA  
 GCTCTGCAGTCTCCAGGCAGAGGAAGAACCAGTCTGGAACGTCGTTGCAGGGGCCCTGGCCATGGGC  
 CTGGCCAGCCCCGACTCCTTTCTGGGCCCTCCAGGAGTCAACCCAGACCTGGGGAAGGAGTCCCGCG  
 GGCTGAGGCAACAAGGCACGTCAGTGGCCAGTCTGGTCCCAAGCCCCAGGCAGGGCCCATCGCTGTGC  
 CCACTGTCGAAGGCACTCCCTGGCTGGTGGCTCTGTGGCTTACACCCGCGGTGCCAGGCCCGGCTG  
 CCCTTGCCTGCCCTGAGTGTGGCCGCTGCTTTCGCCATGCCCTTCTTAGCACTGCACCGCCAGGTCC  
 ATGCTGCTGCCACCCAGACCTGGGCTTTCCTGCCACCTCTGTGGCAGAGCTCCGAGGCTGGTGGC  
 CCTGGTTCTGCATCTGCGGGCCATTAGCTGCAAAGCGGCCATCGCTTGTCCAAATGCGAGAGACGC  
 TTCTGGCGACAAAGCAGCTTCGAGCTCATCTGCGGCGGTGCCACCTCCCGCCCCGAGGCCCGGCCCT  
 TCATATGCGGCAACTGTGGCCGGAGCTTTCGCCAGTGGGACCAGCTAGTTGCCCAAGCGGGTGCACGT  
 AGCTGAGGCCCTGGAGGAGGCCGACGCAAGGCTCTGGGGCCCCGGCCAGGGGCCCGCCCGCGTGACC  
 GCCCCCCGGCCGGTGGAGATGCCGTCGACCGCCCTTCCAGTGTGCCTGTTGTGGCAAGCGCTCCGGC  
 ACAAGCCCAACTTGATCGCTCACCGCCGCTGCACACGGGCGAGCGGCCACCAGTGCCTCGAGTGC  
 GAAGCGCTTTACCAATAAGCCCTATCTGACTTCGACCGGCGCATCCACACCGGCGAGAAGCCCTACCCG  
 TGCAAAGAGTGCAGCCGCGCTTCCGGCACAACCAACCTGCTGTCTCACAGCAAGATTCACAAGCGAT  
 CCGAGGGTTCGGCCAGGCCGCCCCGGCCGGGAGCCCGCCAGTGCACAGCCCGCCAGGAGTCCGC  
 GGCCGAGCCACCCCGGCGGTACCTCTGAAACCGGCCAGGAGCCGCGCCAGGGGCCCGCCAGAGCAC  
 CCGCAGGACCCGATCGAAGCCCCCTCCCTCTACAGCTGCGACGACTGCGGCAGGAGCTTCCGGCTGG  
 AGCGCTTCTGCGGGCCACCAGCGGCAGCACACCGGGGAGCGGCCCTTACCTGCGCCGAGTGCGGAA  
 GAATTCGGCAAGAAGACGCACCTGGTGGCGCACTCGCGCTGCACTCCGGCGAGCGGCCCTTCGCTGC  
 GAGGAGTGCAGCCCGCTTCTCCAGGGCAGCCATCTGGCGGCGCATCGGCGGACCACGCCCCGATC  
 GGCCCTTCTGTGTCCGACTGCGGCAAGGCTTCCGCCACAACCTACCTGGCGGCGACCGGCGCAT  
 CCACACCGGCGAGAAGCCCTACGCTGCCCCGACTGCGGCAAAGCCTTACGCCAGAAGTCCAACCTGGT  
 TCGCACCGGCGCATCCACACGGGCGAGCGCCCTACGCTGTCCGACTGCGACCGCAGCTTACGCCAGA  
 AGTCCAACCTCATACCCACCGCAAGAGCCACATCCGGGACGGCGCTTCTGCTGTGCCATCTGTGCCA  
 GACCTTCGACGACGAGGAGACTCTGGCCACCAGAAGAAGCAGATGTC

**ACGCGTACGCGGCCGCTCGAG** – GFP Tag – GTTTAA

**Protein Sequence:**

>RG219423 representing NM\_001099695  
 Red=Cloning site Green=Tags(s)

MGIGVSLLLQFSLTPGGYRSVGRSRRCSRGSIPRNIPKRSWKKPHPQLCSLQAEIEPMLERRRCRGLAMG  
 LAQPRLLSGPSQESPQLGKESRGLRQQGTSVAQSGAQAPGRAHRCACRRRHPGWVALWLHTRRCQARL  
 PLPCPECGRRFRHAPFLALHRQVHAAATPDLGFACHLCGQSFGRWVALVLHLRAHSAKRPIACPKCERR  
 FWRKQLRAHLRRCHPPAPEARPFICGNCGRSFAQWDQLVAHKRVHVAEALAEAAKALGPRPRGRPAVT  
 APRPGGDAVDRPFQACCGKRFRRHKPNLIAHRRVHTGERPHQCECGKRFNPKPYLTSRRRIHTGEKYPY  
 CKECGRRFRHKPNLLSHSKIHKRSEGSAQAAPGPGSPQLPAGPQESAAEPTPAVPLKPAQEPGAPPEH  
 PQDPIEAPPSLYSCDDGRSFRLEFLRAHQHQHTGERPFTCAECGNFVKKTHLVAHSRVHSGERPFAC  
 EECGRRFSQGSLLAAHRDHAPDRPFVCPDCGKAFRHKPYLAAHRRRIHTGEKYPYCPDCGKAFSQQSNLY  
 SHRRRIHTGERPYACPDORSFSQSNLITHRKSIRDGAFCCAICGQTFDDEERLLAHQKHDV

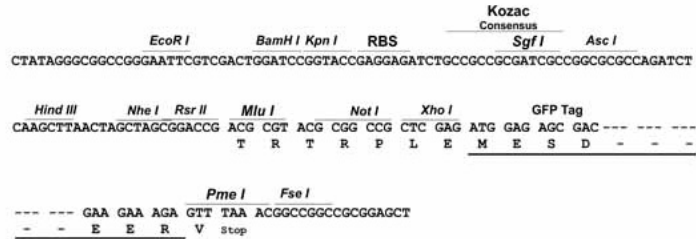
**TRTRPLE** – GFP Tag – V

**Restriction Sites:**

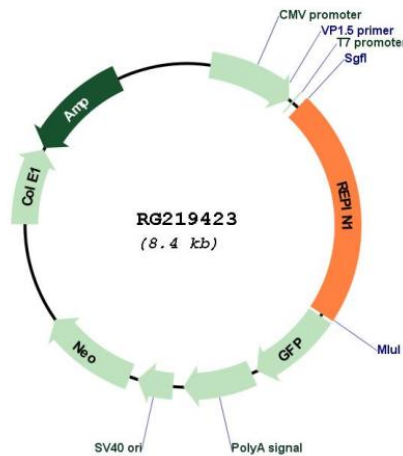
SgfI-MluI

Cloning Scheme:

Cloning sites used for ORF Shutting:



Plasmid Map:



ACCN: NM\_001099695  
 ORF Size: 1872 bp

<b>OTI Disclaimer:</b>	The molecular sequence of this clone aligns with the gene accession number as a point of reference only. However, individual transcript sequences of the same gene can differ through naturally occurring variations (e.g. polymorphisms), each with its own valid existence. This clone is substantially in agreement with the reference, but a complete review of all prevailing variants is recommended prior to use. <a href="#">More info</a>
<b>OTI Annotation:</b>	This clone was engineered to express the complete ORF with an expression tag. Expression varies depending on the nature of the gene.
<b>Components:</b>	The ORF clone is ion-exchange column purified and shipped in a 2D barcoded Matrix tube containing 10ug of transfection-ready, dried plasmid DNA (reconstitute with 100 ul of water).
<b>Reconstitution Method:</b>	<ol style="list-style-type: none"><li>1. Centrifuge at 5,000xg for 5min.</li><li>2. Carefully open the tube and add 100ul of sterile water to dissolve the DNA.</li><li>3. Close the tube and incubate for 10 minutes at room temperature.</li><li>4. Briefly vortex the tube and then do a quick spin (less than 5000xg) to concentrate the liquid at the bottom.</li><li>5. Store the suspended plasmid at -20°C. The DNA is stable for at least one year from date of shipping when stored at -20°C.</li></ol>
<b>RefSeq:</b>	<a href="#">NM_001099695.2</a>
<b>RefSeq Size:</b>	3185 bp
<b>RefSeq ORF:</b>	1875 bp
<b>Locus ID:</b>	29803
<b>UniProt ID:</b>	<a href="#">Q9BWE0</a>
<b>Cytogenetics:</b>	7q36.1
<b>Gene Summary:</b>	Sequence-specific double-stranded DNA-binding protein required for initiation of chromosomal DNA replication. Binds on 5'-ATT-3' reiterated sequences downstream of the origin of bidirectional replication (OBR) and a second, homologous ATT sequence of opposite orientation situated within the OBR zone. Facilitates DNA bending.[UniProtKB/Swiss-Prot Function]