

Product datasheet for **RG219397**

DENN (MADD) (NM_003682) Human Tagged ORF Clone

Product data:

Product Type: Expression Plasmids
Product Name: DENN (MADD) (NM_003682) Human Tagged ORF Clone
Tag: TurboGFP
Symbol: MADD
Synonyms: DEEAH; DENN; IG20; NEDDISH; RAB3GEP; RabGEF
Mammalian Cell Selection: Neomycin
Vector: pCMV6-AC-GFP (PS100010)
E. coli Selection: Ampicillin (100 ug/mL)
ORF Nucleotide Sequence: >RG219397 representing NM_003682
Red=Cloning site Blue=ORF Green=Tags(s)

TTTTGTAATACGACTCACTATAGGGCGGCCGGAATTCGTCGACTGGATCCGGTACCGAGGAGATCTGCC
GCC**CGATCGCC**

ATGGTGCAAAAGAAGAAGTTCTGTCTCGGTTACTTGACTATCTAGTGATCGTAGGGGCCAGGCACCCGA
GCAGTGATAGCGTGGCCAGACTCTGAATTGCTACGGCGATACCCCTTGGAGGATCACACTGAGTTTCC
CCTGCCCCAGATGTAGTGTCTTCTGCCAGCCGAGGGTGCCTGAGCGTGGCAGCGGCGCATGAGC
CTTCGGGATGATACCTCTTTGTCTTACCCTCACTGACAAGGACTGGAGTACGCGATATGGCATCT
GTGTTAACTTCTACCGCTCCTTCCAAAAGCGAATCTCTAAGGAGAAGGGGAAGGTGGGGCAGGGTCCCC
TGGGAAGGAAGGAACCCATGCCACCTGTGCCTCAGAAGAGGGTGGCACTGAGAGCTCAGAGAGTGGCTCA
TCCTGCAGCCTCTCAGTGTGACTCTACCCCTGATGTGAACAGTCTCCTCGGGCAAACGCCGGGCCA
AGGCGGGGAGCCGCTCCCGCAACAGTACTCTCACGTCCCTGTGCGTGTCTAGCCACTACCCCTTCTTCTC
CACCTTCCGAGAGTGTGTATACTCTCAAGCGCTGGTGGACTGCTGTAGTGAGCGCTTCTGGGCAAG
AACTGGGCATCCCTCGAGGCGTACAAAGGACACCATGTGGCGGATCTTACTGGATCGCTGTGGTAG
AGGAGAAGTCAAGTGCCTTCTGCATGACCTTCGAGAGATTGAGGCTGGATCTATCGATTGCTGCGCTC
CCCAGTACCCGTCTCTGGGCAGAAGCGAGTAGACATCGAGTCTACCCCAAGAGCTCCAGCCAGCTCTG
ACCTTTGCTCTTCCAGACCCATCTCGATTACCCCTAGTGGATTTCCCACTGCACCTCCCTGGAACCTC
TAGGTGTGGACGCTGTCTCCAGGTGCTAACCTGCATTCTGTTAGAGCACAAGGTGGTGCTACAGTCCCG
AGACTACAATGCACTCTCCATGTCTGTGATGGCATTCTGGCAATGATCTACCCACTGGAGTATATGTTT
CCTGTCATCCCGCTGCTACCCACCTGCATGGCATCAGCAGAGCAGCTGCTGTTGGCTCCAACCCCGTACA
TCATTGGGGTTCCTGCCAGCTTCTTCTCTACAACTGGACTTCAAAATGCCTGATGATGTATGGCTAGT
GGATCTGGACAGCAATAGGGTATTGCCCCACCAATGCAGAAGTGTGCCTATCCTGCCAGAACCAGAA
TCACTAGAGCTGAAAAAGCATTTAAAGCAGGCCTTGGCCAGCATGAGTCTCAACACCCAGCCCATCTCA
ATCTGGAGAAATTCATGAGGGCCAGGAGATCCCCCTTCTTGGGAAGGCTTCTAATGACCTGCAGTC
CACACCGTCCACTGAATCAACCCACTCATCTATGGCAATGATGTGGATTCTGTGGATGTTGCAACCAGG



[View online >](#)

GTTGCCATGGTACGGTTCTTCAATTCGCCAACGTGCTGCAGGGATTTTCAGATGCACACGCGTACCCTGC
 GCCTCTTCTCGGCCTGTGGTAGCTTTTCAAGCTGGCTCCTTTCTAGCCTCACGTCCCCGGCAGACTCC
 TTTTGCCGAGAAATTGGCCAGGACTCAGGCTGTGGAGTACTTTGGGGAATGGATCCTTAACCCACCAAC
 TATGCCTTTCAGCGAATTCACAACAATATGTTTGTATCCAGCCCTGATTGGTGACAAGCCAAAGTGGTATG
 CTCATCAGCTGCAGCCTATCCACTATCGCGTCTATGACAGCAATCCCAGCTGGCTGAGGCCCTGAGTGT
 ACCACCAGAGCGGACTCTGACTCCGAACCTACTGATGATAGTGGCAGTGATAGTATGGATTATGACGAT
 TCAAGCTCTTCTACTCCTCCCTTGGTGACTTTGTGTCAGTGAATGATGAAATGTGACATTAAATGGTGATA
 CTCCCAATGTGGACCCTCTGACACATGCAGCACTGGGGGATGCCAGCGAGGTGGAGATTGACGAGCTGCA
 GAATCAGAAGGAAGCAGAAGAGCCTGGCCAGACAGTGAGAACTCTCAGGAAAACCCCCACTGCGCTCC
 AGCTCTAGCACCACAGCCAGCAGCAGCCCCAGCACTGTATCCACGGAGCCAACTCTGAACCTGCTGACT
 CTACGGAGATGGATGATAAGGCAGCAGTAGGCGTCTCCAAGCCCCCTCCTTCCGTGCCTCCAGCATTGG
 CAAATCGAACATGGACAGACGTGAGCAGAAAATGGAGAGGGGTGAGTGCAGCCGCGAATCTATGACAA
 CCATACTCGAGCCCAATATGGCTTTCCCTGAGGAAGATGAGGATGAGCAGGGGAAAGTTACTC
 CCCGATTCAGCCAAATGTCAGTGGCAATCGGGCTCAAAGCTGCTGCGGCCAACAGCTTGAGACTGGC
 AAGTGACTCAGATGCAGAGTCACTCTCGGGCAAGCTCTCCAACCTCCAGCTCTCAACACCAGCACC
 GAGGGCTTCGGGGGCATCATGTCTTTGCCAGCAGCCTCTATCGGAACCACAGTACCAGCTTCAGCTTT
 CAAACCTCACACTGCCCAAAAGGTGCCCGAGAGAAGGCCACGCCCTTCCCAGTCTGAAAGTATTTGG
 GCTAAATACTCTAATGGAGATTGTTACTGAAGCCGGCCCCGGGAGTGGTGAAGGAAAACAGGAGGGCGTTA
 GTGGATCAGAAGTCATCTGTCAATAAACACAGCCCAACAGTGAAGGAGAACCTCCATCACCCAGGGTC
 GATCCAGCAATTTAGTGAGAACCAGCAGTTCCTGAAGGAGGTGGTGCACAGCGTCTGGACGGCCAGGG
 AGTTGGCTGGCTCAACATGAAAAGGTGCGCCGGCTGCTGGAGAGCGAGCAGTGCAGTCTTTGTCCTG
 AGCAAGTGAACCGCATGGTGCAGTCAAGGACGATGCCCGCAGGACATCATCCCGATGTGGAGATCA
 GTCGGAAGGTGTACAAGGGAATTTAGACCTCTCAAGTGTACAGTCTCAGCTTGAGCAGCTCATGTC
 CCACGCGGTCTGGGTGGCATGGCCAGCATCTTTGGGCTTTTGGAGATTGCCAGACCCACTACTATAGT
 AAAGAACCAGACAAGCGGAAGAGAAGTCCAACAGAAAAGTGAATAACCCAGTTGGCAAGGATCCTGGCC
 TAGCTGGCGGGGGACCCAAAGGCTATGGCACAACTGAGAGTCCACAACCTGGGACCTCGGGCACCAAG
 TGCCACAGGAAAGGTCCTAAGGAACTGGACACCAGAAGTTAAAGGAAGAAAATTTTATAGCATCTATT
 GAATTGTGGAACAAGCACCAGGAAGTGAAGGCAAAAAGCTTTGGAAAAACAGAGGCTGAAGTAAATCA
 AACCTGTCTTTGACCTTGGTGGACAGAGGAGAAAAAGTCCCAGATCAGCGCAGACAGTGGTGTGAGCCT
 GACGTCTAGTTCCAGAGGACTGATCAAGACTCTGTATCGGCGTGAAGTCCAGCTGTTATGATCCGACG
 TCAAGTCAAGATTCTGAAGTTAGCACCGTGGTGAAGTAAAGTCTGGAGAGACCTTGGAGCTGACAGTG
 ACTTGAGCAGCAATGCAGGTGATGGACCAGGTGGCGAGGGCAGTGTTCACCTGGCAAGCTCTCGGGGCAC
 TTTGTCTGATAGTGAATTTGAGACCAACTCTGCCACAAGCACCATCTTTGGTAAAGCCCACAGCTTGAAG
 CCAAGCATAAAGGAGAAGCTGGCAGGCAGCCCCATTCTGTAATCTGAAGATGTGAGCCAGCGAGTCTATC
 TCTATGAGGGACTCCTAGGAAGGACAAAGGATCCATGTGGGACCAGTTAGAGGATGCAGCTATGGAGAC
 CTTTTCTATAAGCAAAGAGCGTTCTACTTTATGGGACCAATGCAATCTGGGAAGATGCCTTCTTAGAT
 GCTGTGATGTTGGAGAGAGAAGGGATGGGTATGGACCAGGTCCCAGGAAATGATCGACAGGTACCTGT
 CCCTTGGAGAACATGACCGGAAGCGCTGGAAGATGATGAAGATCGCTTGGTGGCCACACTTCTGCACAA
 CCTCATCTCCTACATGCTGCTGATGAAGTAAATAAGAATGACATCCGCAAGAAGGTGAGGCGCCTAATG
 GGAAAGTCGCACATTGGGCTTGTGTACAGCCAGCAAAATCAATGAGGTGCTTGTATCAGCTGGCGAACCTGA
 ATGGACGCGATCTCTATCTGTTCCAGTGGCAGCCGGCACATGAAGAAGCAGACATTTGTGGTACATGC
 AGGGACAGATACAAACGGAGATATCTTTTTCATGGAGGTGTGCGATGACTGTGTGGTGTGCGTAGTAAC
 ATCGGAACAGTGTATGAGCGCTGGTGGTACGAGAAGCTCATCAACATGACCTACTGTCCCAAGACGAAGG
 TGTTGTGCTTGTGGCGTAGAAAATGGCTCTGAGACCCAGCTCAACAAGTTCTATACTAAAAAGTGTGGGA
 GCTGTACTACTGTGTGAAGGACAGCATGGAGCGCGCTGCCGCCGACAGCAAAGCATCAAACCCGGACCT
 GAATTTGGTGGCAGTTCCTGTGCAGGACCTGAAGACTGGTGGGGTGGCTGCTGCAGGTGACCTGG
 AAGGGATCAACCTCAAATTCATGCACAATCAGGTTTTTCATAGAGCTGAATCACATTAAGGATGCAATAC
 AGTTTCAGGGCGTCTTTGTCTGGAGGAATTTGTTCTGAAATTAAGAAGTGGTGAAGCCACAAGTACAAG
 ACACCAATGGCCACGAAATCTGCTACTCCGATTTATGTCTCTTCTCGTACGTGGCTGCAGTTCATAGCA
 GTGAGGAAGATCTCAGAACCCCGCCCGGCTGTCTCTAGC

AGCGGACCGACGCGTACGCGGCCGCTCGAG - GFP Tag - GTTTAA

Protein Sequence: >RG219397 representing NM_003682
 Red=Cloning site Green=Tags(s)

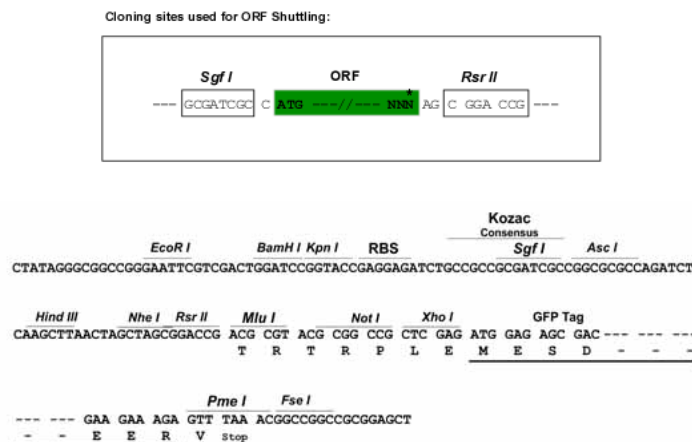
```

MVQKKKFCPRLLDYLVIIGARHPSSDSVAQTEPLLRRYPLEDHTEFFLPPDVVFFCQPEGCLSVRQRMS
LRDDTSFVFTLTDKDTGVTRYGICVNFYRSFQKRISKEKGGGAGSRGKEGTHATCASEEGGTESSESGS
SLQPLSADSTPDVNQSPRGKRRKAGSRSRNSTLTSCLVLSHYPPFFSTFRECLYTLKRLVDCSERLLGK
KLGIPRGVQRDTMWIRIFTGSLLEVEEKSSALLHDLREIEAWIYRLLRSPVPVSGQKRVDIEVLPQELQPAL
TFALPDPSPRFTLVDFPLHLPLELLGVDAQLQVLTCLLLEHKVVQLQSRDYNALSMSVMAFVAMIYPLEYMF
PVIPLLPCTMASAEQLLLAPTPYIIGVPASFFLYKLDKMPDDVWLVDLDSNRVIAPTNAEVLPIPEPE
SLELKKHLKQALASMSLNTQPIILNLEKFHEGQEIPLLLGRPSNDLQSTPSTEFNLIYGNVDVSDVATR
VAMVRRFNSANLVQGFQMHTRTLRLLFPRPVVAFQAGSFLASRPRQTPFAEKLARTQAVEYFGEWILNPTN
YAFQRIHNNMFDPALIGDKPKWYAHQLQPIHYRVYDSNSQLAEALSVPPERDSDEPTDDSGSDSMDYDD
SSSSYSSLGDFVSEMMKCDINGDTPNVDPLTHAALGDASEVEIDELQNQKEAEEPGPDSSENSQENPPLRS
SSSTTASSPSTVIHGANSEPADSTEMDDKAAVGVSKPLPSVPPSIGKSNMDRRQAEIGEGSVRRRIYDN
PYFEPQYGFPEEDEDQGESYTPRFSQHVSNGRAQKLLRPNSLRASDSAE SDSRASSPNSTVSNSTST
EGFGGIMSFASSLYRNHSTSFSLSNLTLPTKGAREKATPFPSLKVFGNLTLMEIVTEAGPGSGEGRRAL
VDQKSSVIKHSPTVKREPPSPQGRSSNSSENQFLKEVHVSVDGQGVGWLNMKKVRRLESEQLRVFVL
SKLNRMVQSEDDARQDIIPDVEISRKYKGMDDLKCTVL SLEQSYAHAGLGGMASIFGLLEIAQTHYYS
KEPDKRRKSPTESVNTVPVKDPLAGRGPDKAMAQLRVPQLGPRAPSATGKGPKELDTRSLKEENFIASI
ELWNKHQEVKKQKALEKQRPEVIKPVFDLGETEEKSQISADSGVSLTSSSQRTDQDSVIGVSPAVMIRS
SSQDSEVSTVVSNSSETL GADSDLSSNAGDGGGEGSVHLASSRGTLDSEIETNSATSTIFGKAHSLK
PSIKEKLAGSPIRTSEDVSRVYLYEGLLGRDKGSMWDQLEDAAMETFSISKERSTLWDQMFWEDAFLD
AVMLEREGMGMDQGPQEMIDRYLSLGEHDRKLEDEDRLLATLLHNLISYMLLMKVNKNDIRKKVRRRLM
GKSHIGLVYSQQINEVL DQLANLNGRDL SIWSSGSRHMKKQTFVVHAGTDTNGDIFMEVCDCCVLRSN
IGTVYERWYKLIINMTYCPKTKVLCLWRRNGSETQLNKFYTKKCRELYYCVKDSMERAAARQSSIKPGP
ELGGFEPVQDLKTGEGGLLQVTLLEGINLKFHNQVFIELNHIKKCNTVRGVFVLEEFVPEIKEVVSCHKYK
TPMAHEICYSVLCLFSYVAAVHSSEEDLRTPPRPVSS
    
```

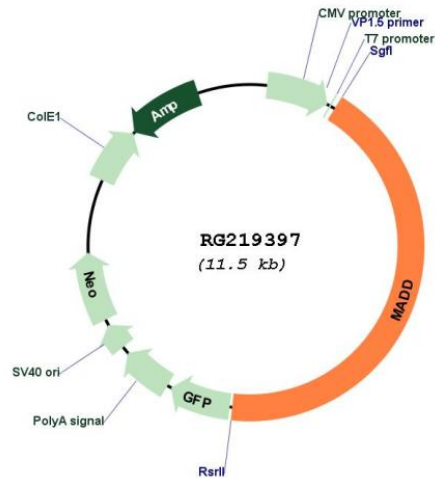
SGP TRRRLE - GFP Tag - V

Restriction Sites: SgfI-RsrII

Cloning Scheme:



Plasmid Map:



ACCN: NM_003682

ORF Size: 4941 bp

OTI Disclaimer: The molecular sequence of this clone aligns with the gene accession number as a point of reference only. However, individual transcript sequences of the same gene can differ through naturally occurring variations (e.g. polymorphisms), each with its own valid existence. This clone is substantially in agreement with the reference, but a complete review of all prevailing variants is recommended prior to use. [More info](#)

OTI Annotation: This clone was engineered to express the complete ORF with an expression tag. Expression varies depending on the nature of the gene.

Components: The ORF clone is ion-exchange column purified and shipped in a 2D barcoded Matrix tube containing 10ug of transfection-ready, dried plasmid DNA (reconstitute with 100 ul of water).

Reconstitution Method:

1. Centrifuge at 5,000xg for 5min.
2. Carefully open the tube and add 100ul of sterile water to dissolve the DNA.
3. Close the tube and incubate for 10 minutes at room temperature.
4. Briefly vortex the tube and then do a quick spin (less than 5000xg) to concentrate the liquid at the bottom.
5. Store the suspended plasmid at -20°C. The DNA is stable for at least one year from date of shipping when stored at -20°C.

RefSeq: [NM_003682.2](#), [NP_003673.2](#)

RefSeq Size: 6016 bp

RefSeq ORF: 4944 bp

Locus ID:	8567
UniProt ID:	Q8WXG6
Cytogenetics:	11p11.2
Domains:	DENN, dDENN, uDENN
Protein Families:	Druggable Genome
Gene Summary:	<p>Tumor necrosis factor alpha (TNF-alpha) is a signaling molecule that interacts with one of two receptors on cells targeted for apoptosis. The apoptotic signal is transduced inside these cells by cytoplasmic adaptor proteins. The protein encoded by this gene is a death domain-containing adaptor protein that interacts with the death domain of TNF-alpha receptor 1 to activate mitogen-activated protein kinase (MAPK) and propagate the apoptotic signal. It is membrane-bound and expressed at a higher level in neoplastic cells than in normal cells. Several transcript variants encoding different isoforms have been described for this gene. [provided by RefSeq, Jul 2008]</p>