

Product datasheet for **RG219372**

PRSS57 (NM_214710) Human Tagged ORF Clone

Product data:

Product Type: Expression Plasmids
Product Name: PRSS57 (NM_214710) Human Tagged ORF Clone
Tag: TurboGFP
Symbol: PRSS57
Synonyms: NSP4; PRSSL1; UNQ782
Mammalian Cell Selection: Neomycin
Vector: pCMV6-AC-GFP (PS100010)
E. coli Selection: Ampicillin (100 ug/mL)
ORF Nucleotide Sequence: >RG219372 representing NM_214710
 Red=Cloning site Blue=ORF Green=Tags(s)

TTTTGTAATACGACTCACTATAGGGCGGCCGGAATTCGTCGACTGGATCCGGTACCGAGGAGATCTGCC
 GCC**CGATCGCC**

ATGGGGCTCGGGTTGAGGGGCTGGGGACGTCCTCTGCTGACTGTGGCCACCGCCCTGATGCTGCCCGTGA
 AGCCCCCGCAGGCTCCTGGGGGCCAGATCATCGGGGCCACGAGGTGACCCCCACTCCAGGCCCTA
 CATGGCATCCGTGCGCTTCGGGGGCCAACATCACTGCGGAGGCTTCTGCTGCGAGCCCGCTGGGTGGTC
 TCGGCCGCCACTGCTTCAGCCACAGAGACCTCCGCACTGGCCTGGTGGTGTGGGCGCCACGTCCTGA
 GTACTGCGGAGCCACCCAGCAGGTGTTTGGCATCGATGCTCTACCACGCACCCGACTACCACCCAT
 GACCCACGCCAACGACATCTGCCTGCTGCGGCTGAACGGCTCTGCTGTCTGGGCCCTGCAGTGGGGCTG
 CTGAGGCTGCCAGGGAGAAGGGCCAGGCCCCCCACAGCGGGGACACGGTGCCGGGTGGCTGGCTGGGGCT
 TCGTGTCTGACTTTGAGGAGCTGCCGCCTGGACTGATGGAGGCCAAGGTCCGAGTGTGGACCCGGACGT
 CTGCAACAGCTCCTGGAAGGGCCACCTGACACTTACCATGCTCTGCACCCGAGTGGGGACGCCACAGA
 CGGGGCTTCTGCTCGGCCGACTCCGAGGGGCCCTGGTGTGCAGGAACCGGGCTCACGGCCTCGTTTCT
 TCTCGGGCCTCTGGTGCGGGACCCCAAGACCCCGACGTGTACACGCAGGTGTCCGCCTTTGTGGCCTG
 GATCTGGGACGTGGTTCGGCGGAGCAGTCCCAGCCCGGCCCTGCCTGGGACCACAGCCCCCAGGA
 GAAGCCGCC

AG**CGGACCG**ACGCGTACGCGGCCGCTCGAG - GFP Tag - GTTTAA



[View online »](#)

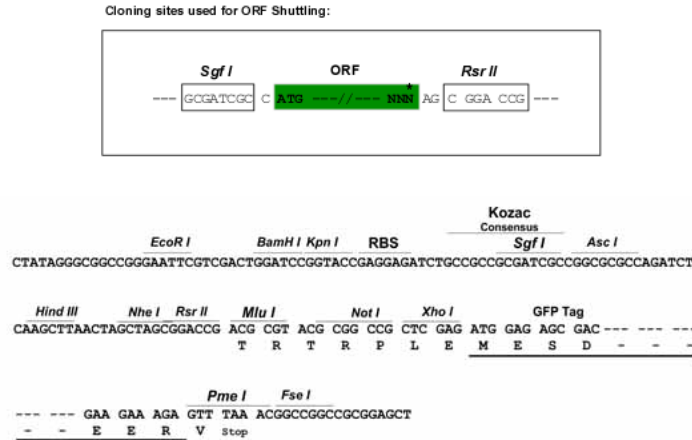
Protein Sequence: >RG219372 representing NM_214710
 Red=Cloning site Green=Tags(s)

MGLGLRGWGRPLLTVATALMLPVKPPAGSWGAIIGGHEVTPHSRPYMASVRFGGQHHCGGFLLRARWVW
 SAAHCFSHRDLRTGLVVLGAHVLSTAEP TQQVFGIDAL TTHPDYHPMTHANDICLLRLNGSAVLGPAVGL
 LRLPGRRARPPTAGTRCRVAGWGFVSDFEELPPGLMEAKVRVLDPDVCNCSWKGHLTL TMLCTRSGD SHR
 RGFC SADS GGPL VCRNRAHGLVSF SGL WCGDPKTPDVYTQVS AFVAWIWDVVRRSSPQPGPLPGTTRPPG
 EAA

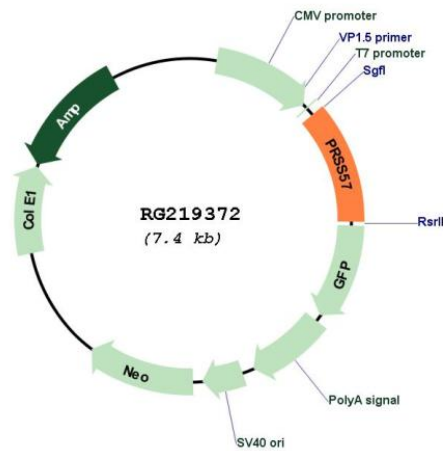
SGPTRRRLE - GFP Tag - V

Restriction Sites: SgfI-RsrII

Cloning Scheme:



Plasmid Map:



ACCN: NM_214710

ORF Size: 849 bp

OTI Disclaimer:	The molecular sequence of this clone aligns with the gene accession number as a point of reference only. However, individual transcript sequences of the same gene can differ through naturally occurring variations (e.g. polymorphisms), each with its own valid existence. This clone is substantially in agreement with the reference, but a complete review of all prevailing variants is recommended prior to use. More info
OTI Annotation:	This clone was engineered to express the complete ORF with an expression tag. Expression varies depending on the nature of the gene.
Components:	The ORF clone is ion-exchange column purified and shipped in a 2D barcoded Matrix tube containing 10ug of transfection-ready, dried plasmid DNA (reconstitute with 100 ul of water).
Reconstitution Method:	<ol style="list-style-type: none">1. Centrifuge at 5,000xg for 5min.2. Carefully open the tube and add 100ul of sterile water to dissolve the DNA.3. Close the tube and incubate for 10 minutes at room temperature.4. Briefly vortex the tube and then do a quick spin (less than 5000xg) to concentrate the liquid at the bottom.5. Store the suspended plasmid at -20°C. The DNA is stable for at least one year from date of shipping when stored at -20°C.
RefSeq:	NM_214710.2
RefSeq Size:	1114 bp
RefSeq ORF:	852 bp
Locus ID:	400668
UniProt ID:	Q6UWY2
Cytogenetics:	19p13.3
Protein Families:	Protease
Gene Summary:	This gene encodes an arginine-specific serine protease and member of the peptidase S1 family of proteins. The encoded protein may undergo proteolytic activation before storage in azurophil granules, in neutrophil cells of the immune system. Following neutrophil activation, the protease is released into the pericellular environment, where it may play a role in defense against microbial pathogens. [provided by RefSeq, Jul 2016]