

Product datasheet for **RG219360**

MRGPRX4 (NM_054032) Human Tagged ORF Clone

Product data:

Product Type:	Expression Plasmids
Product Name:	MRGPRX4 (NM_054032) Human Tagged ORF Clone
Tag:	TurboGFP
Symbol:	MRGPRX4
Synonyms:	GPCR; MRGX4; SNSR6
Mammalian Cell Selection:	Neomycin
Vector:	pCMV6-AC-GFP (PS100010)
E. coli Selection:	Ampicillin (100 ug/mL)
ORF Nucleotide Sequence:	>RG219360 representing NM_054032 Red=Cloning site Blue=ORF Green=Tags(s)

TTTTGTAATACGACTCACTATAGGGCGGCCGGAATTCGTCGACTGGATCCGGTACCGAGGAGATCTGCC
GCC**CGATCGCC**

ATGGATCCAACCGTCCCAGTCTTCGGTACAAAACGACACCAATCAACGGACGTGAGGAGACTCCTTGCT
ACAATCAGACCCTGAGCTTCACGGTGCTGACGTGCATCATTTCCCTTGTCGGACTGACAGGAAACGCGGT
TGTGCTCTGGCTCCTGGCTACCGCATGCGCAGGAACGCTGTCTCCATCTACATCCTCAACCTGGCCGCA
GCAGACTTCTCTCCTCAGCTCCAGATTATACGTTCCGATTACGCCTCATCAATATCAGCCATCTCA
TCCGAAAATCCTCGTTTCTGTGATGACCTTTCCCTACTTTACAGGCCTGAGTATGCTGAGCGCCATCAG
CACCGAGCGCTGCCTGTCTGTTCTGTGGCCATCTGGTACCGCTGCCGCCGCCACACACCTGTCAGCG
GTCGTGTGTGCTCCTGCTCTGGGGCTGTCCCTGCTGTTTAGTATGCTGGAGTGGAGGTTCTGTGACTTCC
TGTTTAGTGGTGCTGATTCTAGTTGGTGTGAAACGTCAGATTTACCCAGTCCGCTGGCTGATTTTTTT
ATGTGTGGTTCTCTGTGTTCCAGCCTGGTCTGCTGGTCCAGGATCCTCTGTGGATCCCGGAAGATGCCG
CTGACCAGGCTGTACGTGACCATCCTGCTCACAGTGCTGGTCTTCCCTCTGCGGCCTGCCCTTCGGCA
TTCTGGGGCCCTAATTTACAGGATGCACCTGAATTTGGAAGTCTTATATTGTCATGTTTATCTGGTTTG
CATGTCCCTGTCTCTTTAAACAGTAGTGCCAACCCATCATTTACTTCTTCGTGGGCTCTTTTAGGCAG
CGTCAAAATAGGCAGAACCTGAAGCTGGTCTCCAGAGGGCTCTGCAGGACAAGCCTGAGGTGGATAAAG
GTGAAGGCAGCTTCTGAGGAAAGCCTGGAGCTGTCCGGAAGCAGATTGGGGCCA

ACGCGTACGCGGCCGCTCGAG - GFP Tag - GTTTAA



[View online »](#)

Protein Sequence: >RG219360 representing NM_054032
 Red=Cloning site Green=Tags(s)

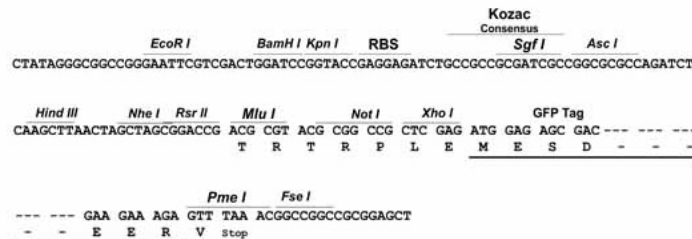
```
MDPTVPVFGTKLTPINGREETPCYNQTLSTVLTCIISLVGLTGNVVLWLLGYRMRNNAVSIYILNLAA
ADFLFLSFQIIRSPLRLINISHLIRKILVSMTFPYFTGLSMLSAISTERCLSVLWPIWYRCRRPHTLSA
VVCVLLWGLSLLFSMLEWRFCDFLFSGADSSWCETSDFIPVAWLIFLCVVLVCVSSLVLLVRILCGSRKMP
LTRLVYVITLLTVLVFLLCGLPFGILGALIYRMHLNLEVLVCHVYLVCMSSLSLNSANPIIYFFVGSFRQ
RQNRQNLKLVLQRALQDKPEVDKGEQQLPEESLELSESGSRLGP
```

TRTRPLE - GFP Tag - V

Restriction Sites: SgfI-MluI

Cloning Scheme:

Cloning sites used for ORF Shuttling:



ACCN: NM_054032

ORF Size: 966 bp

OTI Disclaimer: The molecular sequence of this clone aligns with the gene accession number as a point of reference only. However, individual transcript sequences of the same gene can differ through naturally occurring variations (e.g. polymorphisms), each with its own valid existence. This clone is substantially in agreement with the reference, but a complete review of all prevailing variants is recommended prior to use. [More info](#)

OTI Annotation: This clone was engineered to express the complete ORF with an expression tag. Expression varies depending on the nature of the gene.

Components: The ORF clone is ion-exchange column purified and shipped in a 2D barcoded Matrix tube containing 10ug of transfection-ready, dried plasmid DNA (reconstitute with 100 ul of water).

Reconstitution Method:

1. Centrifuge at 5,000xg for 5min.
2. Carefully open the tube and add 100ul of sterile water to dissolve the DNA.
3. Close the tube and incubate for 10 minutes at room temperature.
4. Briefly vortex the tube and then do a quick spin (less than 5000xg) to concentrate the liquid at the bottom.
5. Store the suspended plasmid at -20°C. The DNA is stable for at least one year from date of shipping when stored at -20°C.

RefSeq: [NM_054032.2](#), [NP_473373.1](#)

RefSeq Size: 1463 bp

RefSeq ORF: 969 bp

Locus ID: 117196

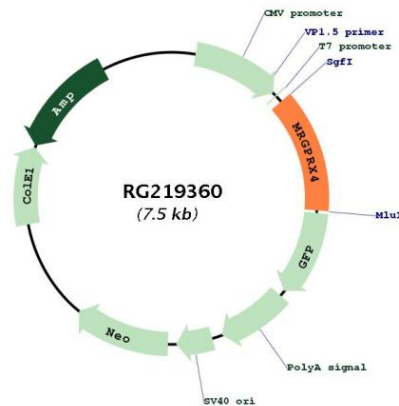
UniProt ID: [Q96LA9](#)

Cytogenetics: 11p15.1

Protein Families: Druggable Genome, GPCR, Transmembrane

Gene Summary: Orphan receptor. Probably involved in the function of nociceptive neurons. May regulate nociceptor function and/or development, including the sensation or modulation of pain. Potently activated by enkephalins (By similarity).[UniProtKB/Swiss-Prot Function]

Product images:



Circular map for RG219360