

Product datasheet for **RG219346**

DENN (MADD) (NM_130476) Human Tagged ORF Clone

Product data:

Product Type:	Expression Plasmids
Product Name:	DENN (MADD) (NM_130476) Human Tagged ORF Clone
Tag:	TurboGFP
Symbol:	MADD
Synonyms:	DEEAH; DENN; IG20; NEDDISH; RAB3GEP; RabGEF
Mammalian Cell Selection:	Neomycin
Vector:	pCMV6-AC-GFP (PS100010)
E. coli Selection:	Ampicillin (100 ug/mL)
ORF Nucleotide Sequence:	>RG219346 representing NM_130476 Red=Cloning site Blue=ORF Green=Tags(s)

TTTTGTAATACGACTCACTATAGGGCGCCGGGAATTCGTCGACTGGATCCGGTACCGAGGAGATCTGCC
GCC**CGATCGCC**

ATGGTGCAAAGAAGAAGTTCTGTCTCGGTTACTTGACTATCTAGTGATCGTAGGGCCAGGCACCCGA
GCAGTGATAGCGTGGCCAGACTCTGAATTGCTACGGCGATACCCCTTGGAGGATCACACTGAGTTTCC
CCTGCCCCAGATGTAGTGTCTTCTGCCAGCCGAGGGTGCCTGAGCGTGGCAGCGGCGCATGAGC
CTTCGGGATGATACCTCTTTGTCTTACCCTCACTGACAAGGACTGGAGTCACGCGATATGGCATCT
GTGTTAACTTCTACCGCTCCTTCAAAGCGAATCTCTAAGGAGAAGGGGAAGGTGGGGCAGGGTCCCCG
TGGGAAGGAAGGAACCCATGCCACCTGTGCCTCAGAAGAGGGTGGCACTGAGAGCTCAGAGAGTGGCTCA
TCCTGCAGCCTCTCAGTGCTGACTCTACCCCTGATGTGAACAGTCTCCTCGGGCAAACGCCGGGCCA
AGGCGGGGAGCCGCTCCCGCAACAGTACTCTCACGTCCCTGTGCGTGCTCAGCCACTACCCCTTCTTCTC
CACCTCCGAGAGTGTTGTATACTCTCAAGCGCCTGGTGGACTGCTGTAGTGAGCGCCTTCTGGGCAAG
AACTGGGCATCCCTCGAGGCGTACAAAGGACACCATGTGGCGGATCTTACTGGATCGCTGCTGGTAG
AGGAGAAGTCAAGTGCCCTTCTGCATGACCTTCGAGAGATTGAGGCTGGATCTATCGATTGCTGCGCTC
CCCAGTACCCGTCTCTGGGCAGAAGCGAGTAGACATCGAGGTCCTACCCCAAGAGCTCCAGCCAGCTCTG
ACCTTTGCTCTTCCAGACCCATCTCGATTACCCCTAGTGGATTTCCCACTGCACCTCCCTTGGAACTTC
TAGGTGTGGACGCCTGTCTCCAGGTGCTAACCTGCATTCTGTTAGAGCACAAGGTGGTGCTACAGTCCCG
AGACTACAATGCACTCTCCATGTCTGTGATGGCATTCTGGCAATGATCTACCCACTGGAATATATGTTT
CCTGTCATCCCGCTGCTACCCACCTGCATGGCATCAGCAGAGCAGCTGCTGTTGGCTCAACCCCGTACA
TCATTGGGGTTCCTGCCAGCTTCTTCTCTACAACTGGACTTCAAAATGCCTGATGATGTATGGCTAGT
GGATCTGGACAGCAATAGGGTGATTGCCCCACCAATGCAGAAGTGTGCCTATCCTGCCAGAACCAGAA
TCACTAGAGCTGAAAAAGCATTAAAGCAGGCCTTGGCCAGCATGAGTCTCAACACCCAGCCCATCTCA
ATCTGGAGAAATTCATGAGGGCCAGGAGATCCCCCTTCTTGGGAAGGCTTCTAATGACCTGCAGTC
CACACCGTCCACTGAATCAACCCACTCATCTATGGCAACGATGTGGATTCTGTGGATGTTGCAACCAGG



[View online »](#)

GTTGCCATGGTACGGTTCTTCAATTCCGCCAACGTGCTGCAGGGATTTTCAGATGCACACGCGTACCCTGC
 GCCTCTTTCTCGGCCTGTGGTAGCTTTTCAAGCTGGCTCCTTTCTAGCCTCACGTCCCCGGCAGACTCC
 TTTTGCCGAGAAATTGGCCAGGACTCAGGCTGTGGAGTACTTTGGGGAATGGATCCTTAACCCACCAAC
 TATGCCTTTCAGCGAATTCACAACAATATGTTTGTATCCAGCCCTGATTGGTGACAAGCCAAAGTGGTATG
 CTCATCAGCTGCAGCCTATCCACTATCGCGTCTATGACAGCAATCCCAGCTGGCTGAGGCCCTGAGTGT
 ACCACCAGAGCGGACTCTGACTCCGAACCTACTGATGATAGTGGCAGTGATAGTATGGATTATGACGAT
 TCAAGCTCTTCTACTCCTCCCTTGGTGACTTTGTGTCAGTGAATGATGAAATGTGACATTAATGGTGATA
 CTCCCAATGTGGACCCTCTGACACATGCAGCACTGGGGGATGCCAGCGAGGTGGAGATTGACGAGCTGCA
 GAATCAGAAGGAAGCAGAAGAGCCTGGCCAGACAGTGAGAACTCTCAGGAAAACCCCCACTGCGCTCC
 AGCTCTAGCACCACAGCCAGCAGCAGCCCCAGCACTGTATCCACGGAGCCAACTCTGAACCTGCTGACT
 CTACGGAGATGGATGATAAGGCAGCAGTAGGCGTCTCCAAGCCCCCTCCTTCCGTGCCTCCAGCATTGG
 CAAATCGAACGTGGACAGACGTGAGGCAGAAATGGAGAGGGGTGAGTGCAGCGGCGAATCTATGACAA
 CCATACTCGAGCCCAATATGGCTTTCCCCCTGAGGAAGATGAGGATGAGCAGGGGAAAGTTACTC
 CCCGATTCAGCCAAATGTCAGTGGCAATCGGGCTCAAAGCTGCTGCGGCCAACAGCTTGAGACTGGC
 AAGTGACTCAGATGCAGAGTCTGAGTCTCGGGCAAGCTCTCCAACCTCCACCGTCTCCAACACCAGCACC
 GAGGGCTTCGGGGGCATCATGTCTTTTGGCAGCAGCCTCTATCGGAACCACAGTACCAGCTTCAGTCTTT
 CAAACCTCACACTGCCCACAAAGGTGCCCGAGAGAAGGCCACGCCCCCTCCCCAGTCTGAAAGGAAACAG
 GAGGGCGTTAGTGGATCAGAAGTCATCTGTCAATTAACACAGCCCAACAGTGAAAAGAGAACCCTCCATCA
 CCCCAGGGTCGATCCAGCAATTCAGTGAAGAACAGCAGTTTCTGAAGGAGGTGGTGACAGCGTGTGG
 ACGGCCAGGGAGTTGGCTGGCTCAACATGAAAAAGGTGCGCCGGCTGCTGGAGAGCGAGCAGTGCAGT
 CTTTGTCTGAGCAAGCTGAACCGCATGGTGCAGTCAAGGACGATGCCCGCAGGACATCATCCCGGAT
 GTGGAGATCAGTCGGAAGGTGTACAAGGGAATGTTAGACCTCCTCAAGTGTACAGTCTCAGTCTGGAGC
 AGTCTATGCCACGCGGGTCTGGGTGGCATGGCCAGCATCTTTGGCTTTTGGAGATTGCCAGACCCA
 CTAATAAGTAAAGAACCAGACAAGCGGAAGAGAAGTCCAACAGAAAGTGTAAATACCCCAAGTTGGCAAG
 GATCCTGGCCTAGCTGGCGGGGGACCAAAGGCTATGGCACAAGTGGAGTTCACAAGTGGGACCTC
 GGGACCAAGTGGCACAGGAAAGGGTCTAAGGAACTGGACACCAGAAGTTAAAGGAAGAAAATTTTAT
 AGCATCTATTGGGCTGAAGTAATCAAACCTGTCTTTGACCTTGGTGAGACAGAGGAGAAAAGTCCAG
 ATCAGCGCAGACAGTGGTGTGAGCCTGACGTCTAGTCCAGAGGACTGATCAAGACTCTGTATCGGCG
 TGAGTCCAGCTGTTATGATCCGACGCTCAAGTCAAGTCTGAAGTATGACACCGTGGTGAGTAAAGCTC
 TGGAGAGACCCTTGGAGCTGACAGTACTGAGCAGCAATGCAGGTGATGGACCAGTGGCAGGGCAGT
 GTTACCTGGCAAGCTCTCGGGCACTTTGTCTGATAGTAAAATGAGACCAACTCTGCCACAAGCACCA
 TCTTTGGTAAAGCCACAGCTTGAAGCCAAGCATAAAGGAGAAGCTGGCAGGCAGCCCCATTCGACTTC
 TGAAGATGTGAGCCAGCGAGTCTATCTCTATGAGGGACTCCTAGGCAAAGAGCGTCTACTTTATGGGAC
 CAAATGCAATTCTGGGAAGATGCCTTCTTAGATGCTGTGATGTTGGAGAGAGAAGGGATGGGTATGGACC
 AGGGTCCCCAGGAAATGATCGACAGGTACCTGTCCCTTGGAGAACATGACCGGAAGCGCCTGGAAGATGA
 TGAAGATCGCTTGGTGGCCACACTTCTGCACAACCTCATCTCCTACATGCTGCTGATGAAGGTAATAAG
 AATGACATCCGCAAGAAGGTGAGGCGCCTAATGGGAAAGTCGCACATTGGGCTTGTGTACAGCCAGCAAA
 TCAATGAGGTGCTTATCAGCTGGCGAACCTGAATGGACGCGATCTCTCTATCTGGTCCAGTGGCAGCCG
 GCACATGAAGAAGCAGACATTTGTGGTACATGCAGGGACAGATACAACGGAGATATCTTTTTCATGGAG
 GTGTGCGATGACTGTGTGGTGTGCGTAGTAACATCGGAACAGTGTATGAGCGCTGGTGGTACGGAAGC
 TCATCAACATGACCTACTGTCCCAAGACGAAGGTGTTGTGCTTGTGGCGTAGAAATGGCTCTGAGACCCA
 GCTCAACAAGTTCTATACTAAAAAGTGTGGGAGCTGACTACTGTGTAAGGACAGCATGGAGCGCGCT
 GCCGCCGACAGCAAAGCATCAAACCCGGACCTGAATTGGGTGGCGAGTTCCTGTGCAGGACCTGAAGA
 CTGGTGGGGTGGCCTGCTGCAGGTGACCCTGGAAGGGATCAACCTCAAATTCATGCACAATCAGGTTTT
 CATAGAGCTGAATCACATTAAGGAGTGAATACAGTTCGAGGCGTCTTTGTCTGGAGGAATTTGTCTCT
 GAAATTAAGAAGTGGTGGAGCCACAAGTACAAGACCAATGGCCACGAAATCTGCTACTCCGTATTAT
 GTCTTCTCGTACGTGGCTGCAGTTCATAGCAGTGGGAAGATCTCAGAACCCCGCCCGCCTGTCTC
 TAGC

AGCGGACCGACGCGTACGCGGCCGCTCGAG - GFP Tag - GTTTAA

Protein Sequence: >RG219346 representing NM_130476
 Red=Cloning site Green=Tags(s)

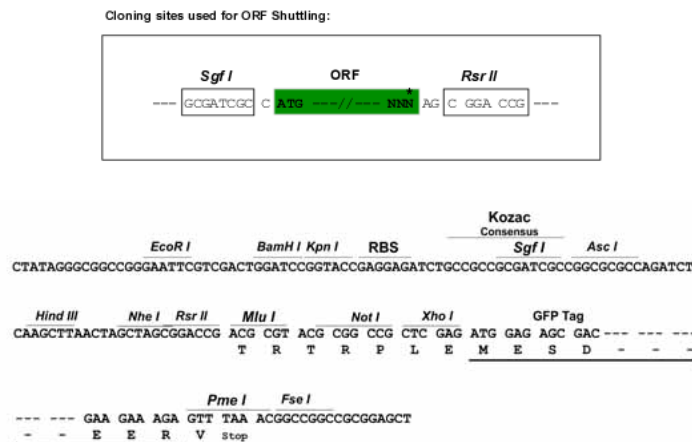
```

MVQKKKFCPRLLDYLVIVGARHPSSDSVAQTPELLRRYPLEDHTEFFLPPDVVFFCQPEGCLSVRQRMS
LRDDTSFVFTLTDKDTGVTRYGICVNFYRSFQKRISKEKEGGAGSRGKEGTHATCASEEGGTESSESGS
SLQPLSADSTPDVNQSPRGKRRAKAGSRSRNSTLTSCLVLSHYPPFFSTFRECLYTLKRLVDCCSERLLGK
KLGIPRGVQRDTMWIRIFTGSLLEVEEKSSALLHDLREIEAWIYRLLRSPVPVSGQKRVDIEVLPQELQPAL
TFALPDPSPRFTLVDFPLHLPLELLGVDAQLQVLTCLLLEHKVVQLQRDYNALSMSVMAFVAMIYPLEYMF
PVIPLLPCTMASAEQLLLAPTPYIIGVPASFFLYKLDKMPDDVWLVDLDSNRVIAPTNAEVLPIPEPE
SLELKKHLKQALASMSLNTQPIILNLEKFHEGQEIPLLLGRPSNDLQSTPSTEFNLIYGNVDVSDVATR
VAMVRRFFNSANVLQGFQMHTRTLRLFPRPVVAFQAGSFLASRPRQTPFAEKLARTQAVEYFGEWILNPTN
YAFQRIHNNMFDPALIGDKPKWYAHQLQPIHYRVYDSNSQLAEALSVPPERDSDEPTDDSGSDSMDYDD
SSSSYSSLGDFVSEMMKCDINGDTPNVDPLTHAALGDASEVEIDELQNQKEAEEPGPDSSENSQENPLRS
SSSTTASSPSTVIHGANSEPADSTEMDDKAAVGVSKPLPSVPPSIGKSNVDRRQAEIGESVRRRIYDN
PYFEPQYGFPEEDEDQGESYTPRFSQHVSNGRAQKLLRPNSLRLASDSAESDRASSPNSTVSNSTST
EGFGGIMSFASSLYRNHSTSFSLSNLTLPTKGAREKATPFPSLKGNNRRLVDQKSSVIKHSPTVKREPPS
PQGRSSNSSENQQFLKEVVHSLVDGQGVWLNMMKVRRLLESEQLRVFVLSKLNRMVQSEDDARQDIIPD
VEISRKYKGMDDLKCTVLSLEQSYAHAGLGGMASIFGLLEIAQTHYYSKEPKRKRSPTESVNTPVGK
DPGLAGRGDPKAMAQLRVPQLGPRAPSATGKGPKELDTRSLKEENFIASIGPEVIKPVFDLGETEEKKSQ
ISADSGVSLTSSSQRTDQDSVIGVSPAVMIRSSSQDSEVSTVSNSSGETLGADSDLSSNAGDGGGGEGS
VHLASSRGTLSDSEIETNSATSTIFGKAHSLKPSIKEKLAGSPIRTSEDVSQRVYLEGLLGKERSTLWD
QMWFEDAFLDAYMLEREGMGMDQGPQEMIDRYLSLGEHDKRLEDEDEDRLATLLHNLISYMLLMKVNK
NDIRKKVRRRLMGKSHIGLVYSQQINEVLQDLANLNGRDL SIWSSGSRHMKKQTFV VHAGDTNGDIFFME
VCDDCVVLRSNIGTVYERWYKELINMTYCPKTKVLC LWRNGSETQLNKFYTKKCRELYYCVKDSMERA
AARQOSIKPPELGGFFVQDLKTGEGGLLQVTLEGINLKFMHNQVFIELNHIKKCNTVRGVFVLEEFVP
EIKEVVSCHKYKTPMAHEICYSVLC LFSYVAAVHSSEEDLRTPRPVSS
  
```

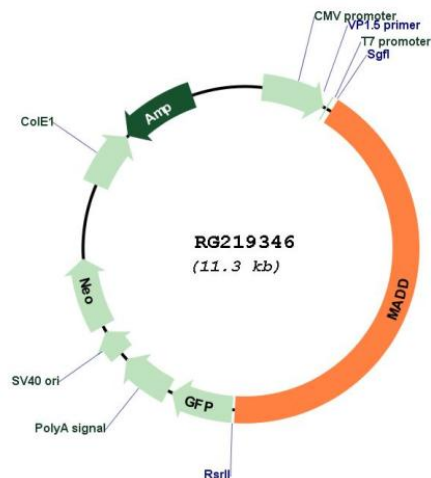
SGPTRRRLE - GFP Tag - V

Restriction Sites: SgfI-RsrII

Cloning Scheme:



Plasmid Map:



ACCN: NM_130476

ORF Size: 4764 bp

OTI Disclaimer: The molecular sequence of this clone aligns with the gene accession number as a point of reference only. However, individual transcript sequences of the same gene can differ through naturally occurring variations (e.g. polymorphisms), each with its own valid existence. This clone is substantially in agreement with the reference, but a complete review of all prevailing variants is recommended prior to use. [More info](#)

OTI Annotation: This clone was engineered to express the complete ORF with an expression tag. Expression varies depending on the nature of the gene.

Components: The ORF clone is ion-exchange column purified and shipped in a 2D barcoded Matrix tube containing 10ug of transfection-ready, dried plasmid DNA (reconstitute with 100 ul of water).

Reconstitution Method:

1. Centrifuge at 5,000xg for 5min.
2. Carefully open the tube and add 100ul of sterile water to dissolve the DNA.
3. Close the tube and incubate for 10 minutes at room temperature.
4. Briefly vortex the tube and then do a quick spin (less than 5000xg) to concentrate the liquid at the bottom.
5. Store the suspended plasmid at -20°C. The DNA is stable for at least one year from date of shipping when stored at -20°C.

RefSeq: [NM_130476.1](#), [NP_569832.1](#)

RefSeq Size:	5875 bp
RefSeq ORF:	4764 bp
Locus ID:	8567
UniProt ID:	Q8WXG6
Cytogenetics:	11p11.2
Domains:	DENN, dDENN, uDENN
Protein Families:	Druggable Genome
Gene Summary:	<p>Tumor necrosis factor alpha (TNF-alpha) is a signaling molecule that interacts with one of two receptors on cells targeted for apoptosis. The apoptotic signal is transduced inside these cells by cytoplasmic adaptor proteins. The protein encoded by this gene is a death domain-containing adaptor protein that interacts with the death domain of TNF-alpha receptor 1 to activate mitogen-activated protein kinase (MAPK) and propagate the apoptotic signal. It is membrane-bound and expressed at a higher level in neoplastic cells than in normal cells. Several transcript variants encoding different isoforms have been described for this gene. [provided by RefSeq, Jul 2008]</p>