

Product datasheet for **RG219344**

TFDP3 (NM_016521) Human Tagged ORF Clone

Product data:

Product Type:	Expression Plasmids
Product Name:	TFDP3 (NM_016521) Human Tagged ORF Clone
Tag:	TurboGFP
Symbol:	TFDP3
Synonyms:	CT30; DP4; HCA661
Mammalian Cell Selection:	Neomycin
Vector:	pCMV6-AC-GFP (PS100010)
E. coli Selection:	Ampicillin (100 ug/mL)
ORF Nucleotide Sequence:	>RG219344 representing NM_016521 Red=Cloning site Blue=ORF Green=Tags(s)

TTTTGTAATACGACTCACTATAGGGCGGCCGGAATTCGTCGACTGGATCCGGTACCGAGGAGATCTGCCGCC**CGATCGCC**

ATGCCTCAGAGACCAGCAGCATCAAACATCCCTGTGGTAGGAAGCCAAACCCACCCAGCACTCACTTTG
CCTCTCAGAACCCAGCATTCTACTCCTCACCTCCTTGGGCCGGGCAGCACAAACAGGAAAGGAGAGAAGAA
TGGCATGGGCCTGTGCCGTCTTCCATGAAGGTCTGGGAGACGGTGCAGAGGAAAGGGACCCTTCTCGC
CAGGAAGTGGTGGCGAGCTGGTCGCCAAGTTCAGAGCTGCCAGCAACCACGCCTCACCAAACGAGTCAG
CTTATGACGTGAAAAACATAAAACGGCGCACCTACGATGCCTTAAACGTGCTGATGGCCATGAATATCAT
CTCCAGGGAGAAAAAGAAGATCAAGTGGATTGGTCTGACCACCAACTCGGCTCAGAACTGTGAGAACTTA
CGGGTGGAAAGACAGAAGAGACTTGAAAGAATAAAGCAGAAACAGTCTGAACTTCAACAACCTTATTCTAC
AGCAAATTGCTTTCAAGAACCTGGTGTGAGAAACAGTATGTGGAGGAGCAGGTGAGCCAGCGGCCGCT
GCCCAACTCAGTCATCCACGTGCCCTTCATCATCAGCAGTAGCAAGAAGACCGTCATCAACTGCAGC
ATCTCCGACGACAAATCAGAATATCTGTTAAGTTAACAGCTCCTTTGAAATCCACGATGACACAGAAG
TGCTGATGTGGATGGCATGACTTTTGGGCTAGAGTCCGGGAGCTGCTCTGCCGAAGACCTTAAATGGC
CAGAAATTTGGTCCCAAAGGCTCTGGAGCCGTACGTGACAGAAATGGCTCAGGAACTTTTGGAGGTGTG
TTCACGACGGCAGGTTCCAGGTAAATGGCAGTGGCTTCTGCCAGTGACCTGACCAACATTGCGATTG
GGATGCTGGCCACAAGCTCCGGTGGATCTCAGTACAGTGGCTCCAGGGTGGAGACCCAGCAGTCGAGGA
GGAAGAGGAGGAGGACAACAACGATGACGACCTCAGTGAATGACGAGGATGAC

ACGCGTACGCGGCCGCTCGAG - GFP Tag - GTTTAA



[View online »](#)

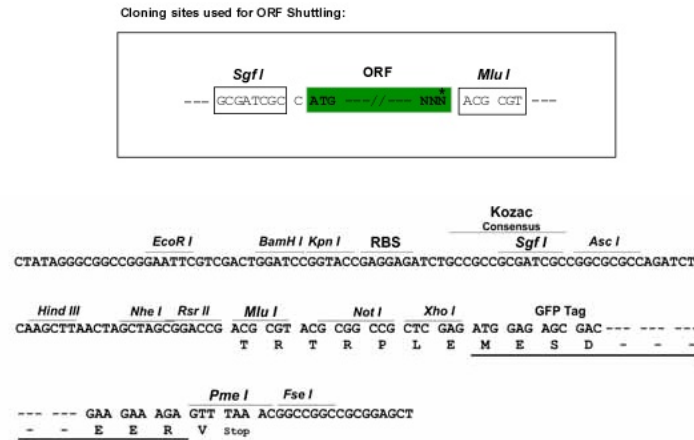
Protein Sequence: >RG219344 representing NM_016521
 Red=Cloning site Green=Tags(s)

MPQRPAASNIPVVGSPNPPSTHFASQNQHSYSSPPWAGQHNRKGEKNGMGLCRLSMKVWETVQRKGTTCSC
 QEVVVGELVAKFRAASNHASPNEAYDVKNIKRRTYDALNVLMMAMNIIISREKKKIKWIGLTTNSAQNCQNL
 RVERQKRLERIKQKQSELQQLILQQIAFKNLVLRNQYVEEQVSRPLPNSVIHVPFIIISSSKKTVINCS
 ISDDKSEYLFKFNSSFETHDDTEVLMWGMFTFGLSESGSCSAEDLKMARNLVPKALEPYVTEMAQGTFFGGV
 FTAGSRNNGTWLSASDLTNIAIGMLATSSGGSQYSGSRVETPAVEEEEEEDNDDDLSENDEDD

TRTRPLE - GFP Tag - V

Restriction Sites: SgfI-MluI

Cloning Scheme:



ACCN: NM_016521

ORF Size: 1035 bp

OTI Disclaimer: The molecular sequence of this clone aligns with the gene accession number as a point of reference only. However, individual transcript sequences of the same gene can differ through naturally occurring variations (e.g. polymorphisms), each with its own valid existence. This clone is substantially in agreement with the reference, but a complete review of all prevailing variants is recommended prior to use. [More info](#)

OTI Annotation: This clone was engineered to express the complete ORF with an expression tag. Expression varies depending on the nature of the gene.

Components: The ORF clone is ion-exchange column purified and shipped in a 2D barcoded Matrix tube containing 10ug of transfection-ready, dried plasmid DNA (reconstitute with 100 ul of water).

Reconstitution Method:

1. Centrifuge at 5,000xg for 5min.
2. Carefully open the tube and add 100ul of sterile water to dissolve the DNA.
3. Close the tube and incubate for 10 minutes at room temperature.
4. Briefly vortex the tube and then do a quick spin (less than 5000xg) to concentrate the liquid at the bottom.
5. Store the suspended plasmid at -20°C. The DNA is stable for at least one year from date of shipping when stored at -20°C.

RefSeq: [NM_016521.2](#), [NP_057605.3](#)

RefSeq Size: 1680 bp

RefSeq ORF: 1218 bp

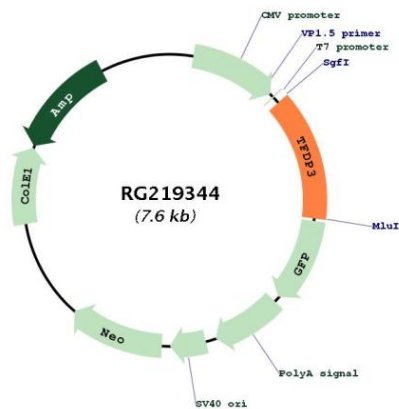
Locus ID: 51270

UniProt ID: [Q5H9I0](#)

Cytogenetics: Xq26.2

Gene Summary: This gene encodes a member of the DP family of transcription factors. These factors heterodimerize with E2F proteins to enhance their DNA-binding activity and promote transcription from E2F target genes. This protein functions as a negative regulator and inhibits the DNA binding and transcriptional activities of E2F factors.[provided by RefSeq, May 2010]

Product images:



Circular map for RG219344