

Product datasheet for **RG219332**

RNF39 (NM_025236) Human Tagged ORF Clone

Product data:

Product Type: Expression Plasmids
Product Name: RNF39 (NM_025236) Human Tagged ORF Clone
Tag: TurboGFP
Symbol: RNF39
Synonyms: FAP216; HZF; HZFW; LIRF
Mammalian Cell Selection: Neomycin
Vector: pCMV6-AC-GFP (PS100010)
E. coli Selection: Ampicillin (100 ug/mL)
ORF Nucleotide Sequence: >RG219332 representing NM_025236
 Red=Cloning site Blue=ORF Green=Tags(s)

TTTTGTAATACGACTCACTATAGGGCGGCCGGAATTCGTCGACTGGATCCGGTACCGAGGAGATCTGCC
 GCC**CGATCGCC**

ATGTGGTGGAGAGATTTGACGAGACTGAGACTCTGGTTGAAGAGAGAGGCAATCCAGGAGAGGGCGGA
 AAGCGCAAAAGTTAATGCGGGAGTCGGAGAGAAGGCCATCTACACAGCAAGCAGAGGGCGGCCCGCC
 ATCTGCGCGCTCGAAGCGGTACGGTGGTCGCGGAAGGGCGCGTCCAGATCCTGGCTTCCATGGAT
 GCGCCCGAGCTGGGCCCGGGCTGGTGGAGCGTCTGGAGCAGCTGGCGACGTGCCTCTGTGCGGGGGCT
 CCTTCGAGGACCCGGTGTCTTCTGGCGTGGGAGCACAGCTTCTGCCGCGCTGTCTGGCCCGCGCTGGG
 GACTCCGCGGGCACCAGCAGGCTTCCCCACCGCCTGTCCCTGCTGCGGCCTGCCGTGTCCCGC
 CGCAGCCTGAGGTCTAATGTGCGGCTGGCGGTGGAGGTGCGAATCAGCCGCGAGCTGCGAGAGAAGCTGG
 CTGAGCCTGGGGCCCGTGGCGGGAGACCGGAGGGGGCGCATCCCCACCATGGGCTGCCTGGACCTGCC
 CGGAGAGGATATGAGGAAGACATGGAGACGATTTGAAGTCCCAACATCCAAGTCACTAATTCAGAGGAT
 GATCTCCCTGAAGATTATCCAGTGGTCAAAAAATGCTTCATAGACTGACAGCCGACCTGACCCTGGACC
 CTGGGACCGCACACCGCCGCTGCTCATCTCCGCCGACCGCCGACGCGTACAACCTGGCCCCACAGGGAC
 GCCCGCGCCCCCTGACGGCCCCAAGCGCTTCGATCAGCTCCAGCTGTGCTGGGTGGCAGGGCTTCGGG
 GCCGGCCGCACTGCTGGGAGGTGGAGACTGCGGACCCGCTCCTGCAGAGACTTTCTGGGAGGATG
 CGGACGACGAGGAGACCACTATGCAGTGGGCGCGCCGCGGAATCAGTGAACGCAAGGGCTGCGTAAG
 GCTGTGCCTGCGGGGGCCGTGTGGGCCGTGGAGGGCCGCGCGCCGCTGTGGCCCTCACGGCACCC
 GAACCCACCTGCTGGGCGGTGTTGAGCCCCGCGCGCGCATTGCGTGGACCTGGACTGGGAGCGGG
 GCCCGTGGCCTTCTACGACGGCCGCTCACTCGACCTGCTTACGCTTCCAGGCGCTGGCCCCCTGGG
 GGAGCGCATTTCCCGCTGTTCTGCACCTGCGACCCTCGTGTCCGCTCCGATTGTACCAGCGAAAGC

ACGCGTACGCGGCCGCTCGAG - GFP Tag - GTTTAA



[View online »](#)

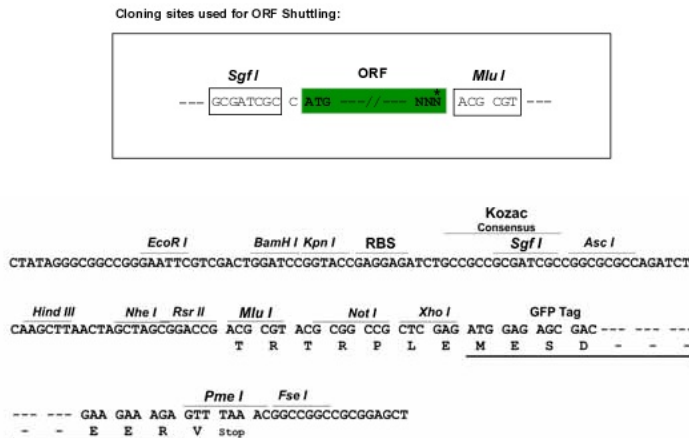
Protein Sequence: >RG219332 representing NM_025236
 Red=Cloning site Green=Tags(s)

MWWRDLTRLRLWLKREAIPEGGRKAAKVNAGVGEKGIYTASSRGGPPSARSKAVTVVAEGAASRSLWLSMD
 APELGPGLVERLEQLATCPLCGGSFEDPVLLACEHSFCRACLARRWGTPPATGTEASPTACPCCLPCPR
 RSLRSNVRLAVEVRISRELREKLAEPGARAGRRRGRIPTMGCLDLPGEDMRKTWRRFEVPTSKSSNSD
 DLPEDYPVVKKMLHRLTADLTLDPGTAHRRLLISADRRSVQLAPPGTPAPPDGPGRFDQLPAVLGAQGF
 AGRHCWEVETADAASCRDSSGEDADDEESHYAVGAAGESVQRKGCVRLCPAGAVWAVEGRGRLWALTAP
 EPTLLGGVEPPRRIRVDLDWGRVAFYDGRSLDLLYAFQAPGPLGERIFPLFCTCDPRAPLRIVPAES

TRTRPLE - GFP Tag - V

Restriction Sites: SgfI-MluI

Cloning Scheme:



ACCN: NM_025236

ORF Size: 1260 bp

OTI Disclaimer: The molecular sequence of this clone aligns with the gene accession number as a point of reference only. However, individual transcript sequences of the same gene can differ through naturally occurring variations (e.g. polymorphisms), each with its own valid existence. This clone is substantially in agreement with the reference, but a complete review of all prevailing variants is recommended prior to use. [More info](#)

OTI Annotation: This clone was engineered to express the complete ORF with an expression tag. Expression varies depending on the nature of the gene.

Components: The ORF clone is ion-exchange column purified and shipped in a 2D barcoded Matrix tube containing 10ug of transfection-ready, dried plasmid DNA (reconstitute with 100 ul of water).

Reconstitution Method:

1. Centrifuge at 5,000xg for 5min.
2. Carefully open the tube and add 100ul of sterile water to dissolve the DNA.
3. Close the tube and incubate for 10 minutes at room temperature.
4. Briefly vortex the tube and then do a quick spin (less than 5000xg) to concentrate the liquid at the bottom.
5. Store the suspended plasmid at -20°C. The DNA is stable for at least one year from date of shipping when stored at -20°C.

RefSeq: [NM_025236.3](#)

RefSeq Size: 2187 bp

RefSeq ORF: 1059 bp

Locus ID: 80352

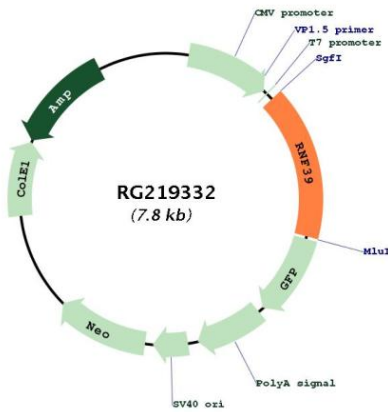
UniProt ID: [Q9H2S5](#)

Cytogenetics: 6p22.1

Protein Families: Druggable Genome

Gene Summary: This gene lies within the major histocompatibility complex class I region on chromosome 6. Studies of a similar rat protein suggest that this gene encodes a protein that plays a role in an early phase of synaptic plasticity. Multiple transcript variants encoding different isoforms have been found for this gene. [provided by RefSeq, Jul 2008]

Product images:



Circular map for RG219332