

Product datasheet for **RG219324**

CDC14A (NM_003672) Human Tagged ORF Clone

Product data:

Product Type:	Expression Plasmids
Product Name:	CDC14A (NM_003672) Human Tagged ORF Clone
Tag:	TurboGFP
Symbol:	CDC14A
Synonyms:	cdc14; DFNB32; DFNB35; DFNB105; hCDC14
Mammalian Cell Selection:	Neomycin
Vector:	pCMV6-AC-GFP (PS100010)
E. coli Selection:	Ampicillin (100 ug/mL)



[View online »](#)

ORF Nucleotide Sequence:

>RG219324 representing NM_003672
 Red=Cloning site Blue=ORF Green=Tags(s)

TTTTGTAATACGACTCACTATAGGGCGGCCGGAATTCGTCGACTGGATCCGGTACCGAGGAGATCTGCC
 GCC**CGGATCGCC**

ATGGCAGCGGAGTCAGGGAACTAATCGGGCTTGTGAGTTCATGAAAGATCGGTTATATTTTGCTACTT
 TAAGGAATAGACCAAAAAGCACAGTAAATACCCACTATTTCTCCATCGATGAGGAGCTGGTCTATGAAAA
 TTTCTATGCAGATTTTGGACCGCTGAACTTGGCAATGGTGTACAGATATTGCTGCAAACTAAACAAGAAA
 CTAANAATCATACAGTTTGTCAAGAAAGAAAATAGTGCCTACACCTGTTTGGACCAACGGAAGAGCAA
 ATGCAGCATTTTGTAGGTGCCTATGCAGTAATCTATTTAAAGAAGACACCAGAAGAAGCCTACAGAGC
 ACTCCTGTCTGGCTCAAACCCCTATCTTCCATTAGGGATGCTTCTTTGAAATTGCACCTACAAT
 CTCACCATTCTGACTGTTTGCAGGGAATCAGAAAGGATTACAACATGGATTTTTGACTTTGAGACAT
 TTGATGTGGATGAATATGAACATTATGAGCGAGTTGAAAATGGTACTTCACTGGATTGTTCCAGGAAA
 ATTTTTAGCATTTAGTGGACCACATCCTAAAAGCAAAATGAGAATGGTTATCCTCTTCAGCCCTGAA
 GCCTACTTTCTTATTTCAAAAAGCATAATGTGACTGCAGTTGTGAGGCTAAACAAAAGATTTATGAGG
 CAAAGCGCTTACAGACGCTGGCTTCGAGCACTATGACCTCTTTCATAGATGGCAGCACACCCAGTGA
 CAACATCGTGCAGGTTTCTGAACATCTGTGAGAACACCGAAGGGGCCATCGCCGTTCACTGCAAAGCT
 GGTCTTGAAGAACAGGGACATTGATAGCCTGTTATGTAATGAAACACTACAGGTTTACACATGCTGAAA
 TAATTGCTTGGATTAGAATATGCCGGCCAGGCTCTATTATAGGACCCAGCAGCACTTCTGGAAGAAA
 ACAAGCATCGTTGGTCCAAGGAGACATTTCCGATCCAACTGAAAAATCGACCATCCAGTGAAGGA
 AGTATTAATAAAATCTTTCTGGCCTAGATGATGTCTATTGGTGGAAATCTTTCAAAAACACAAAACA
 TGGAACGATTTGGAGAGGATAACTTAGAAGATGATGATGTGAAATGAAAAATGGTATAACCCAGGGAGA
 CAAACTACGTGCCTTAAAAAGTCAGAGACGCCAGTACCTCACCATCCTGTGCATTTAGGTCAGATGAT
 ACAAAGGACATCCAAGAGCAGTGTCCAGCCTTTCAGATTAAGTTCATCCCTGCAAGGATCTGCAGTTA
 CTTTGAAGACATCAAAAATGGCACTGTCCCTTCAGCAACGGCCAAGAGGATCAACAGAACTTCTTTGTC
 TTCGGGTGCCACTGTAAGAAGCTTTTCCATAAACTCCCGCTAGCCAGTCTCTAGGGAACTGAAATGCT
 GCAACAGATGATCCAGAGAACAAAAGACCTCCTCATCCTTAAGGCAGGCTTACAGCCAGCCCGTTTA
 CCAACCTCTTGAATGGCAGCTCCAGCCAACTACCAGAAATTACCCTGAGCTCAACAATAATCAGTACAA
 CAGAAGCAGCAACAGCAACGGGGCAACCTGAACAGCCCCCAGGCCCCACAGCGCCAAGACAGAGGAG
 CACACCACATCCTCCGACCTCTACACGGGCTTTCTTCTTTCAGCGAGATTCTGAGCCGTCTA
 TCCCTTCCCTCAGTCTGAATATGTTTCATTAC

ACGCGTACGCGGCCGCTCGAG - GFP Tag - GTTTAA

Protein Sequence:

>RG219324 representing NM_003672
 Red=Cloning site Green=Tags(s)

MAESGELIGACEFMKDRLYFATLRNRPKSTVNTHYFSIDEELVYENFYADFGLNLMVYRYCCKLNKK
 LKSYSLSRKKIVHYTCFDQRKRANAFLIGAYAVIYLKKTPEEAYRALLSGSNPPYLPFRDASFGNCTYN
 LTILDCLQGIKGLQHGFDFETFDVDEYEHYERVENGFNWIWPGKFLAFSGPHPKSKIENGYPLHAPE
 AYFPYFKKHVNTAVVRLNKKIYEAKRFTDAGFEHYDLFFIDGSTPSDNIVRRFLNICENTEGAIIVHCKA
 GLGRTGLTIACYVMKHYRFTAEIIAWIRICRPGSIIGPQQHFLEEKQASLWVQGDIFRSKLNRPSSSEG
 SINKILSGLDDMSIGGNLSKTQNMERFEDNLEDDVEMKNGITQGDKLRLKSRQRPRTSPSCAFRSDD
 TKGHPRAVSQPFRLSSSLQGSVTLKTSKMLSPSATAKRINRTSLSSGATVRSFSINSRLASSLGNLNA
 ATDDPENKKTSSSSKAGFTASPFNLLNGSSQPTRNYPELNNNQYNRSSNSNGGNLNSPPGPHSAKTEE
 HTTILRPSYTGLSSSSARFLSRSIPSLQSEYVHY

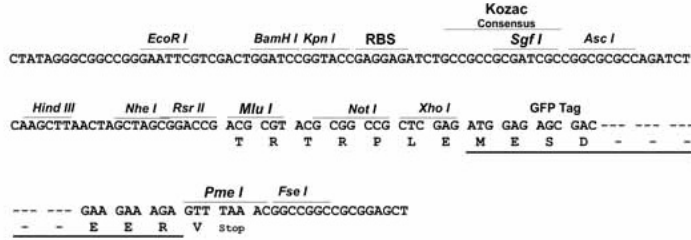
TRTRPLE - GFP Tag - V

Restriction Sites:

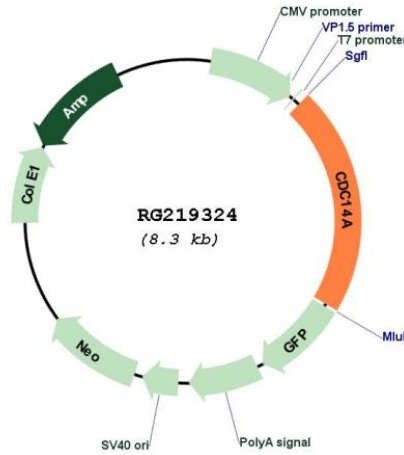
Sgfl-MluI

Cloning Scheme:

Cloning sites used for ORF Shutting:



Plasmid Map:



ACCN: NM_003672

ORF Size: 1782 bp

OTI Disclaimer:	The molecular sequence of this clone aligns with the gene accession number as a point of reference only. However, individual transcript sequences of the same gene can differ through naturally occurring variations (e.g. polymorphisms), each with its own valid existence. This clone is substantially in agreement with the reference, but a complete review of all prevailing variants is recommended prior to use. More info
OTI Annotation:	This clone was engineered to express the complete ORF with an expression tag. Expression varies depending on the nature of the gene.
Components:	The ORF clone is ion-exchange column purified and shipped in a 2D barcoded Matrix tube containing 10ug of transfection-ready, dried plasmid DNA (reconstitute with 100 ul of water).
Reconstitution Method:	<ol style="list-style-type: none">1. Centrifuge at 5,000xg for 5min.2. Carefully open the tube and add 100ul of sterile water to dissolve the DNA.3. Close the tube and incubate for 10 minutes at room temperature.4. Briefly vortex the tube and then do a quick spin (less than 5000xg) to concentrate the liquid at the bottom.5. Store the suspended plasmid at -20°C. The DNA is stable for at least one year from date of shipping when stored at -20°C.
RefSeq:	NM_003672.4
RefSeq Size:	4262 bp
RefSeq ORF:	1785 bp
Locus ID:	8556
UniProt ID:	Q9UNH5
Cytogenetics:	1p21.2
Domains:	Y_phosphatase, DSPc, PTPc_motif
Protein Families:	Druggable Genome, Phosphatase
Protein Pathways:	Cell cycle
Gene Summary:	The protein encoded by this gene is a member of the dual specificity protein tyrosine phosphatase family. It is highly similar to <i>Saccharomyces cerevisiae</i> Cdc14, a protein tyrosine phosphatase involved in the exit of cell mitosis and initiation of DNA replication, suggesting a role in cell cycle control. This protein has been shown to interact with, and dephosphorylate tumor suppressor protein p53, and is thought to regulate the function of p53. Alternative splicing of this gene results in several transcript variants encoding distinct isoforms. [provided by RefSeq, Jul 2008]