

## Product datasheet for **RG219292**

### **DENN (MADD) (NM\_130474) Human Tagged ORF Clone**

#### Product data:

Product Type:	Expression Plasmids
Product Name:	DENN (MADD) (NM_130474) Human Tagged ORF Clone
Tag:	TurboGFP
Symbol:	MADD
Synonyms:	DEEAH; DENN; IG20; NEDDISH; RAB3GEP; RabGEF
Mammalian Cell Selection:	Neomycin
Vector:	pCMV6-AC-GFP (PS100010)
E. coli Selection:	Ampicillin (100 ug/mL)
ORF Nucleotide Sequence:	>RG219292 representing NM_130474 Red=Cloning site Blue=ORF Green=Tags(s)

TTTTGTAATACGACTCACTATAGGGCGGCCGGAATTCGTCGACTGGATCCGGTACCGAGGAGATCTGCC  
GCC**CGATCGCC**

ATGGTGCAAAAGAAGAAGTTCTGTCTCGGTTACTTGACTATCTAGTGATCGTAGGGGCCAGGCACCCGA  
GCAGTGATAGCGTGGCCAGACTCTGAATTGCTACGGCGATACCCCTTGGAGGATCACACTGAGTTTCC  
CCTGCCCCAGATGTAGTGTCTTCTGCCAGCCGAGGGTGCCTGAGCGTGGCGAGCGCGCATGAGC  
CTTCGGGATGATACCTCTTTGTCTTACCCTCACTGACAAGGACTGGAGTACGCGATATGGCATCT  
GTGTTAACTTCTACCGCTCCTTCCAAAAGCGAATCTCTAAGGAGAAGGGGAAGGTGGGGCAGGGTCCCC  
TGGGAAGGAAGGAACCCATGCCACCTGTGCCTCAGAAGAGGGTGGCACTGAGAGCTCAGAGAGTGGCTCA  
TCCTGCAGCCTCTCAGTGCTGACTCTACCCCTGATGTGAACCAGTCTCCTCGGGGCAAACGCCGGCCA  
AGGCGGGGAGCCGCTCCCGCAACAGTACTCTCACGTCCCTGTGCGTGCTCAGCCACTACCCCTTCTTCTC  
CACCTTCCGAGAGTGTGTATACTCTCAAGCGCTGGTGGACTGCTGTAGTGAGCGCCTTCTGGGCAAG  
AACTGGGCATCCCTCGAGGCGTACAAAGGACACCATGTGGCGGATCTTACTGGATCGCTGCTGGTAG  
AGGAGAAGTCAAGTGCCTTCTGCATGACCTTCGAGAGATTGAGGCTGGATCTATCGATTGCTGCGCTC  
CCCAGTACCCGTCTTGGGCAGAAGCGAGTAGACATCGAGTCCCTACCCCAAGAGCTCCAGCCAGCTCTG  
ACCTTTGCTCTTCCAGACCCATCTCGATTACCCCTAGTGGATTTCCCACTGCACCTCCCTGGAACTTC  
TAGGTGTGGACGCGCTGTCTCCAGGTGCTAACCTGCATTCTGTTAGAGCACAAGGTGGTGCTACAGTCCCG  
AGACTACAATGCACTCTCCATGTCTGTGATGGCATTCTGGCAATGATCTACCCACTGGAGTATATGTTT  
CCTGTCATCCCGCTGCTACCCACCTGCATGGCATCAGCAGAGCAGCTGCTGTTGGCTCCAACCCCGTACA  
TCATTGGGGTTCCTGCCAGCTTCTTCTCTACAACTGGACTTCAAAATGCCTGATGATGTATGGCTAGT  
GGATCTGGACAGCAATAGGGTATTGCCCCACCAATGCAGAAGTGTGCCTATCCTGCCAGAACCAGAA  
TCACTAGAGCTGAAAAAGCATTTAAAGCAGGCCTTGGCCAGCATGAGTCTCAACACCCAGCCCATCTCA  
ATCTGGAGAAATTCATGAGGGCCAGGAGATCCCCCTTCTTGGGAAGGCTTCTAATGACCTGCAGTC  
CACACCGTCCACTGAATCAACCCACTCATCTATGGCAATGATGTGGATTCTGTGGATGTTGCAACCAGG



GTTGCCATGGTACGGTTCTTCAATTCGCCAACGTGCTGCAGGGATTTTCAGATGCACACGCGTACCCTGC  
GCCTCTTTCCTCGGCCTGTGGTAGCTTTTCAAGCTGGCTCCTTTCTAGCCTCACGTCCCCGGCAGACTCC  
TTTTGCCGAGAAATTGGCCAGGACTCAGGCTGTGGAGTACTTTGGGGAATGGATCCTTAACCCACCAAC  
TATGCCTTTCAGCGAATTCACAACAATATGTTTGTATCCAGCCCTGATTGGTGACAAGCCAAAGTGGTATG  
CTCATCAGCTGCAGCCTATCCACTATCGCGTCTATGACAGCAATCCCAGCTGGCTGAGGCCCTGAGTGT  
ACCACCAGAGCGGACTCTGACTCCGAACCTACTGATGATAGTGGCAGTGATAGTATGGATTATGACGAT  
TCAAGCTCTTCTACTCCTCCCTTGGTGACTTTGTGAGTAAATGATGAAATGTGACATTAATGGTGATA  
CTCCCAATGTGGACCCTCTGACACATGCAGCACTGGGGGATGCCAGCGAGGTGGAGATTGACGAGCTGCA  
GAATCAGAAGGAAGCAGAAGAGCCTGGCCAGACAGTGAGAATCTCAGGAAAACCCCCACTGCGCTCC  
AGCTCTAGCACCACAGCCAGCAGCAGCCCCAGCACTGTATCCACGGAGCCAACTCTGAACCTGCTGACT  
CTACGGAGATGGATGATAAGGCAGCAGTAGGCGTCTCCAAGCCCCCTCCTTCCGTGCCTCCAGCATTGG  
CAAATCGAACGTGGACAGACGTAGGCAGAAATGGAGAGGGGGCTCAAAGCTGCTGCGGCCAACAGC  
TTGAGACTGGCAAGTACTCAGATGCAGAGTCACTCTCGGGCAAGCTCCCAACTCCACCGTCTCCA  
ACACCAGCACCAGGGCTTCGGGGGCATCATGTCTTTGCCAGCAGCCTCTATCGGAACACAGTACCAG  
CTTCAGTCTTTCAAACCTCACACTGCCACCAAAGGTGCCGAGAGAAGGCCACGCCCTTCCCCAGTCTG  
AAAGGAAACAGGAGGGCTTAGTGGATCAGAAGTCATCTGTCTTAACACAGCCCAACAGTGAAAAGAG  
AACCTCCATACCCCCAGGGTCGATCCAGCAATTCTAGTGAGAACCAGCAGTTCCTGAAGGAGGTGGTGCA  
CAGCGTCTGGACGGCCAGGGAGTTGGCTGGCTCAACATGAAAAAGGTGCGCCGGCTGCTGGAGAGCGAG  
CAGCTGCGAGTCTTTGTCTGAGCAAGCTGAACCCGATGGTGCAGTCAAGGACGATGCCCGCAGGACA  
TCATCCCGGATGTGGAGATCAGTCGGAAGGTGTACAAGGGAATGTTAGACCTCCTCAAGTGTACAGTCT  
CAGCTTGAGCAGTCTATGCCACGCGGGTCTGGGTGGCATGCCAGCATCTTTGGGCTTTTGGAGATT  
GCCAGACCCACTACTATAGTAAAGAACCAGACAAGCGGAAGAGAAGTCCAACAGAAAGTGTAAATACCC  
CAGTTGGCAAGGATCCTGGCCTAGTGGCGGGGGACCCAAAGGCTATGGCACAATGAGAGTTCCACA  
ACTGGGACCTCGGGCACCAAGTGCACAGGAAAGGGTCCTAAGGAACTGGACACCAAGAAGTTTAAAGGAA  
GAAAATTTTATAGCATCTATTGGCCTGAAGTAATCAAACCTGTCTTTGACCTTGGTGAGACAGAGGAGA  
AAAAGTCCAGATCAGCGCAGACAGTGGTGTGAGCCTGACGTCTAGTTCCAGAGGACTGATCAAGACTC  
TGTCTCGGCGTGTGAGTCCAGCTGTTATGATCCGCAGCTCAAGTCAGGATTCTGAAGTTAGCACCGTGGT  
AGTAATAGCTCTGGAGAGACCCTTGGAGCTGACAGTACTTGGAGCAGCAATGCAGGTGATGGACCAGGT  
GCGAGGGCAGTGTTCACCTGGCAAGCTCTCGGGCACTTTGTCTGATAGTAAATGAGACCAACTCTGC  
CACAAGCACCATCTTTGGTAAAGCCACAGCTTGAAGCCAAGCATAAAGGAGAAGCTGGCAGGCAGCCCC  
ATTCGTACTTCTGAAGATGTGAGCCAGCAGTCTATCTCTATGAGGGACTCCTAGGCAAAGAGCGTTCTA  
CTTTATGGGACCAAAATGCAATTCTGGGAAGATGCCTTCTTAGATGCTGTGATGTTGGAGAGAGAAGGGAT  
GGGTATGGACCAGGGTCCCCAGGAAATGATCGACAGGTACCTGTCCCTTGAGAAACATGACCGGAAGCGC  
CTGGAAGATGATGAAGATCGCTTGTGGCCACACTTCTGCACAACCTCATCTCTACATGCTGCTGATGA  
AGGTAATAAGAATGACATCCGCAAGAAGGTGAGGCGCCTAATGGGAAAGTGCACATTGGGCTTGTGTA  
CAGCCAGCAAATCAATGAGGTGCTTGTATCAGCTGGCGAACCTGAATGGACGCGATCTCTCTATCTGGTCC  
AGTGGCAGCCGGCACATGAAGAAGCAGACATTTGTGGTACATGCAGGGACAGATACAAACGGAGATATCT  
TTTTCATGGAGGTGTGCGATGACTGTGTGGTGTTCGCTAGTAAATCGGAACAGTGTATGAGCGCTGGTG  
GTACGAGAAGCTCATCAACATGACCTACTGTCCCAAGCAGGAGGTGTTGTGCTTGTGGCGTAGAAATGGC  
TCTGAGACCCAGCTCAACAAGTTCTATACTAAAAAGTGTGGGAGCTGTACTACTGTGTGAAGGACAGCA  
TGGAGCGCGCTGCCGCCGACAGCAAAGCATCAAACCCGACCTGAATTGGGTGGCGAGTCCCTGTGCA  
GGACCTGAAGACTGGTGAAGGTGGCTGCTGCAGGTGACCCTGGAAGGGATCAACCTCAAATTCATGCAC  
AATCAGTTCCTGAAATTAAGAAGTGG

AGCGGACCGACGCGTACGCGGCCGCTCGAG - GFP Tag - GTTTAA

**Protein Sequence:** >RG219292 representing NM\_130474  
Red=Cloning site Green=Tags(s)

```

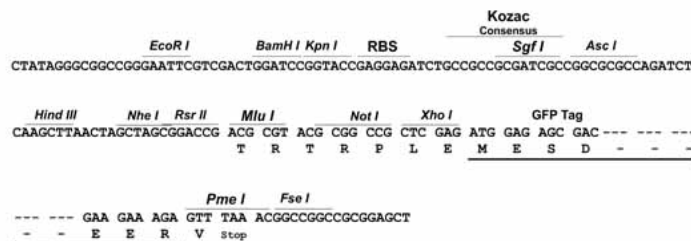
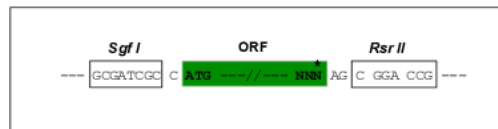
MVQKKKFCPRLLDYLVIIGARHPSSDSVAQTPELLRRYPLEDHTEFFLPPDVVFFCQPEGCLSVRQRMS
LRDDTSFVFTLTDKDTGVTRYGICVNFYRSFQKRISKEKGEAGSRGKEGTHATCASEEGGTESSESGS
SLQPLSADSTPDVNQSPRGKRRKAGSRSRNSTLTSCLVLSHYPPFFSTFRECLYTLKRLVDCCSERLLGK
KLGIPRGVQRDTMWRIFTGSLLEVEEKSSALLHDLREIEAWIYRLLRSPVPVSGQKRVDIIEVLPQELQPAL
TFALPDPSPRFTLVDFPLHLPLELLGVDAQLQVLTICILLEHKVVLQSRDYNALSMSVMAFVAMIYPLEYMF
PVIPLLPCTMASAEQLLLAPTPYIIGVPASFFLYKLDKMPDDVWLVDLDSNRVIAPTNAEVLPIPEPE
SLELKKHLKQALASMSLNTQPIILNLEKFHEGQEIPLLLGRPSNDLQSTPSTEFNLIYGNVDVSDVATR
VAMVRRFNSANVLQGFQMHTRTLRLFPRPVVAFQAGSFLASRPRQTPFAEKLARTQAVEYFGEWILNPTN
YAFQRIHNNMFDPALIGDKPKWYAHQLQPIHYRVYDSNSQLAEALSVPPERDSSEPTDDSGSDSMDYDD
SSSSYSSLGDFVSEMMKCDINGDTPNVDPLTHAALGDASEVEIDELQNQKEAEEPGPDSSENSQENPLRS
SSSTTASSPSTVIHGANSEPADSTEMDDKAAVGVSKPLPSVPPSIGKSNVDRRQAEIGEGAQKLLRPN
LRLASDSDAE SDSRASSPNSTVSNSTSTEGFGGIMSFASSLYRNHSTSFSLSNLTLPTKGAREKATPFPSL
KGNRRALVDQKSSVIKHSPTVKREPPSPQGRSSNSSENQQFLKEVVHSLVDGQGVWLNMKKVRRLLESE
QLRVFVLSKLNRMVQSEDDARQDIIPDVEISRKYVYKGMDDLKCTVLSLEQSYAHAGLGGMASIFGLLEI
AQTHYYSKEPDKRKRSPTESVNTPVGKDPGLAGRGDPKAMAQLRVPQLGPRAPSATGKGPKELDTRSLKE
ENFIASIGPEVIKPVFDLGETEEKSQISADSGVSLTSSSQRTDQDSVIGVSPAVMIRSSSQDSEVSTVV
SNSSGETLGADSDLSSNAGDGGPGGEGSVHLASSRGTLSDSEIETNSATSTIFGKAHSLKPSIKEKLAGSP
IRTSQEDVSQRVYLYEGLLGKERSTLWDQMWFEDAFLDVMLEREGMGMQGPQEMIDRYLSLGEHDRKR
LEDDERLLATLLHNLISYMLLMKVNKNDIRKKVRRMLMGKSHIGLVYSQQINEVLDQLANLNGRDL SIWS
SGSRHMKKQTFVVHAGTDTNGDIFFMVCDCCVLRNSNIGTVYERWYWEKLNMTYCPKTKVLCWRRNG
SETQLNKFYTKKCRELYYCVKDSMERAARQQSISKPGPELGGFFPVQDLKTGEGGLLQVTLLEGINLKFMH
NQFLKLLKKW
    
```

SGPTRRRLE - GFP Tag - V

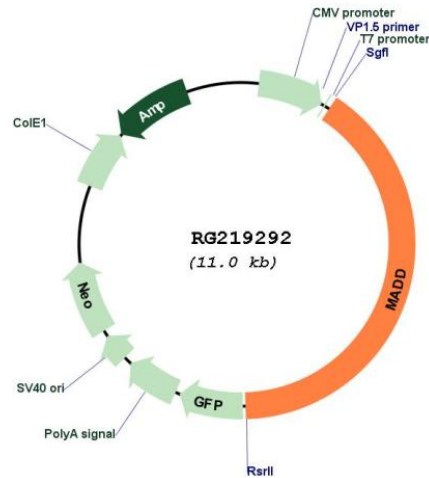
**Restriction Sites:** SgfI-RsrII

**Cloning Scheme:**

Cloning sites used for ORF Shuttling:



Plasmid Map:



ACCN: NM\_130474

ORF Size: 4437 bp

OTI Disclaimer: The molecular sequence of this clone aligns with the gene accession number as a point of reference only. However, individual transcript sequences of the same gene can differ through naturally occurring variations (e.g. polymorphisms), each with its own valid existence. This clone is substantially in agreement with the reference, but a complete review of all prevailing variants is recommended prior to use. [More info](#)

OTI Annotation: This clone was engineered to express the complete ORF with an expression tag. Expression varies depending on the nature of the gene.

Components: The ORF clone is ion-exchange column purified and shipped in a 2D barcoded Matrix tube containing 10ug of transfection-ready, dried plasmid DNA (reconstitute with 100 ul of water).

<b>Reconstitution Method:</b>	<ol style="list-style-type: none"><li>1. Centrifuge at 5,000xg for 5min.</li><li>2. Carefully open the tube and add 100ul of sterile water to dissolve the DNA.</li><li>3. Close the tube and incubate for 10 minutes at room temperature.</li><li>4. Briefly vortex the tube and then do a quick spin (less than 5000xg) to concentrate the liquid at the bottom.</li><li>5. Store the suspended plasmid at -20°C. The DNA is stable for at least one year from date of shipping when stored at -20°C.</li></ol>
<b>RefSeq:</b>	<a href="#">NM_130474.2</a> , <a href="#">NP_569830.2</a>
<b>RefSeq Size:</b>	5655 bp
<b>RefSeq ORF:</b>	4440 bp
<b>Locus ID:</b>	8567
<b>UniProt ID:</b>	<a href="#">Q8WXG6</a>
<b>Cytogenetics:</b>	11p11.2
<b>Domains:</b>	DENN, dDENN, uDENN
<b>Protein Families:</b>	Druggable Genome
<b>Gene Summary:</b>	<p>Tumor necrosis factor alpha (TNF-alpha) is a signaling molecule that interacts with one of two receptors on cells targeted for apoptosis. The apoptotic signal is transduced inside these cells by cytoplasmic adaptor proteins. The protein encoded by this gene is a death domain-containing adaptor protein that interacts with the death domain of TNF-alpha receptor 1 to activate mitogen-activated protein kinase (MAPK) and propagate the apoptotic signal. It is membrane-bound and expressed at a higher level in neoplastic cells than in normal cells. Several transcript variants encoding different isoforms have been described for this gene. [provided by RefSeq, Jul 2008]</p>