

Product datasheet for **RG219285**

IFNA7 (NM_021057) Human Tagged ORF Clone

Product data:

Product Type: Expression Plasmids
Product Name: IFNA7 (NM_021057) Human Tagged ORF Clone
Tag: TurboGFP
Symbol: IFNA7
Synonyms: IFN-alphaJ; IFNA-J
Mammalian Cell Selection: Neomycin
Vector: pCMV6-AC-GFP (PS100010)
E. coli Selection: Ampicillin (100 ug/mL)
ORF Nucleotide Sequence: >RG219285 representing NM_021057
 Red=Cloning site Blue=ORF Green=Tags(s)

TTTTGTAATACGACTCACTATAGGGCGGCCGGAATTCGTCGACTGGATCCGGTACCGAGGAGATCTGCC
 GCC**CGATCGCC**

ATGGCCCGGTCCTTTTCTTTACTGATGGTCGTGCTGGTACTCAGCTACAAATCCATCTGCTCTCTGGGCT
 GTGATCTGCCTCAGACCCACAGCCTGCGTAATAGGAGGGCCTTGATACTCCTGCCACAAATGGGAAGAAT
 CTCTCCTTTCTCTGCTTGAAGGACAGACATGAATTCAGATCCAGAGGAGGAGTTTATGATGCCACCAG
 TTCCAGAAGACTCAAGCCATCTCTGTCTCCATGAGATGATCCAGCAGACCTTCAATCTCTCAGCACAG
 AGGACTCATCTGCTGCTTGGGAACAGAGCCTCCTAGAAAAATTTCCACTGAACCTTACCAGCAACTGAA
 TGACCTGGAAGCATGTGTGATACAGGAGTTGGGGTGGAAAGAGACTCCCTGATGAATGAGGACTTCATC
 CTGGCTGTGAGGAAATACTTCCAAGAATCACTCTTATCTAATGGAGAAGAAATACAGCCCTTGTGCCT
 GGGAGGTTGTCAGAGCAGAAATCATGAGATCCTTCTCTTTTCAACAACTTGAAAAAGGATTAAGGAG
 GAAGGAT

ACGCGTACGCGGCCGCTCGAG - GFP Tag - GTTTAA

Protein Sequence: >RG219285 representing NM_021057
 Red=Cloning site Green=Tags(s)

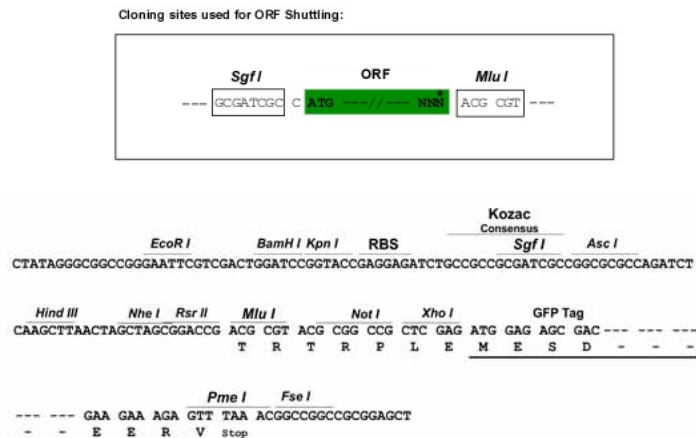
MARFSLLMVVLVLSYKSLGCDLPQTHSLRNRRLILLAQMGRISPFSLKDRHEFRFPEEEFDGHQ
 FQKTQAIISVLHEMIQQTFNLFSTEDSSAAWEQSLLEKFSSTELYQQLNDLEACVIQEVGVEETPLMNEDI
 LAVRKYQRITLYLMEKKYSPCAWEVRAEIMRSFSFSTNLKGLRRKD

TRTRPLE - GFP Tag - V

Restriction Sites: SgfI-MluI



[View online »](#)

Cloning Scheme:


ACCN: NM_021057

ORF Size: 567 bp

OTI Disclaimer: The molecular sequence of this clone aligns with the gene accession number as a point of reference only. However, individual transcript sequences of the same gene can differ through naturally occurring variations (e.g. polymorphisms), each with its own valid existence. This clone is substantially in agreement with the reference, but a complete review of all prevailing variants is recommended prior to use. [More info](#)

OTI Annotation: This clone was engineered to express the complete ORF with an expression tag. Expression varies depending on the nature of the gene.

Components: The ORF clone is ion-exchange column purified and shipped in a 2D barcoded Matrix tube containing 10ug of transfection-ready, dried plasmid DNA (reconstitute with 100 ul of water).

Reconstitution Method:

1. Centrifuge at 5,000xg for 5min.
2. Carefully open the tube and add 100ul of sterile water to dissolve the DNA.
3. Close the tube and incubate for 10 minutes at room temperature.
4. Briefly vortex the tube and then do a quick spin (less than 5000xg) to concentrate the liquid at the bottom.
5. Store the suspended plasmid at -20°C. The DNA is stable for at least one year from date of shipping when stored at -20°C.

RefSeq: [NM_021057.2](#), [NP_066401.2](#)

RefSeq Size: 737 bp

RefSeq ORF: 570 bp

Locus ID: 3444

UniProt ID: [P01567](#)

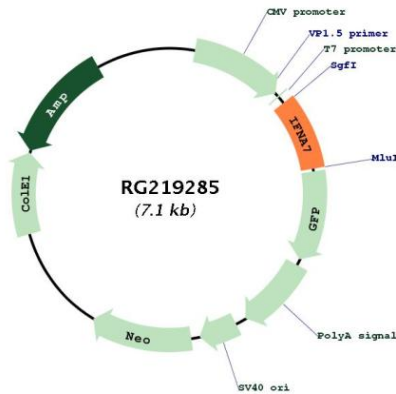
Cytogenetics: 9p21.3

Protein Families: Druggable Genome, Secreted Protein

Protein Pathways: Antigen processing and presentation, Autoimmune thyroid disease, Cytokine-cytokine receptor interaction, Cytosolic DNA-sensing pathway, Jak-STAT signaling pathway, Natural killer cell mediated cytotoxicity, Regulation of autophagy, RIG-I-like receptor signaling pathway, Toll-like receptor signaling pathway

Gene Summary: Produced by macrophages, IFN-alpha have antiviral activities. Interferon stimulates the production of two enzymes: a protein kinase and an oligoadenylate synthetase. [UniProtKB/Swiss-Prot Function]

Product images:



Circular map for RG219285