

## Product datasheet for **RG219284**

### LGR6 (NM\_001017403) Human Tagged ORF Clone

#### Product data:

Product Type:	Expression Plasmids
Product Name:	LGR6 (NM_001017403) Human Tagged ORF Clone
Tag:	TurboGFP
Symbol:	LGR6
Synonyms:	GPCR; VTS20631
Mammalian Cell Selection:	Neomycin
Vector:	pCMV6-AC-GFP (PS100010)
E. coli Selection:	Ampicillin (100 ug/mL)



[View online »](#)

**ORF Nucleotide Sequence:**

>RG219284 representing NM\_001017403  
 Red=Cloning site Blue=ORF Green=Tags(s)

TTTTGTAATACGACTCACTATAGGGCGGCCGGGAATTCGTCGACTGGATCCGGTACCGAGGAGATCTGCC  
 GCC**CGGATCGCC**

ATGCCAGCCCGCCGGGCTCCGGGCGCTATGGCTTTGCGCCGCGCTGTGCGCTTCCCGAGGGCCGGCG  
 GCGCCCCCAGCCCGGCCCGGGGCCACCGCCTGCCCGGCCCTGCCACTGCCAGGAGGACGGCATCAT  
 GCTGTCTGCCGACTGCTCTGAGCTCGGGCTGTCCGCCGTTCCGGGGACCTGGACCCCTGACGGCTTAC  
 CTGGACCTCAGCATGAACAACCTCACAGAGCTTACGCCTGGCCTTCCACCACCTGCGCTTCTGGAGG  
 AGCTGCGTCTCTGGAACCATCTCTCACACATCCCAGGACAAGCATTCTGTGCTCTACAGCCTGAA  
 AATCCTGATGCTGCAGAACAATCAGCTGGGAGGAATCCCCGAGAGGCGCTGTGGAGCTGCCGAGCCTG  
 CAGTCGCTGCGCTAGATGCCAACCTCATCTCCCTGGTCCCGGAGAGGAGCTTTGAGGGGCTGTCTCC  
 TCCGCCACCTCTGGCTGGACGACAATGCACTCACGGAGATCCCTGTGAGGGCCCTCAACAACCTCCCTGC  
 CCTGCAGGCCATGACCCTGGCCCTCAACCGCATCAGCCACATCCCCGACTACGCGTTCCAGAATCTCACC  
 AGCCTTGTGGTGTGCATTTGCATAACAACCGCATCCAGCATCTGGGGACCCACAGCTTCGAGGGGCTGC  
 ACAATCTGGAGACTAGACCTGAATTATAACAAGCTGCAGGAGTTCCCTGTGGCCATCCGGACCCTGGG  
 CAGACTGCAGGAACTGGGGTTCCATAACAACAACATCAAGGCCATCCCAGAAAAGGCCTTCATGGGGAAC  
 CCTCTGTACAGACGATACTTTATGATAACCCAATCCAGTTTGTGGGAAGATCGGCATTCCAGTACC  
 TGCCTAAACTCCACACTATCTCTGAATGGTGCCATGGACATCCAGGAGTTCCAGATCTCAAAGGCAC  
 CACCAGCCTGGAGATCCTGACCTGACCCGCGCAGGCATCCGGCTGTCCCATCGGGATGTGCCAACAG  
 CTGCCAGGCTCCGAGTCTGAACTGTCTCACAATCAAATTGAGGAGCTGCCAGCCTGCACAGGTGTC  
 AGAAATGGAGGAAATCGGCCTCAACAACAACCGCATCTGGGAAATGGAGCTGACACCTCAGCAGGTGTC  
 GAGCTCCCTGCAAGCCCTGGATCTTAGCTGGAACGCCATCCGGTCCATCCACCCGAGGCCCTTCTCCACC  
 CTGCACTCCCTGGTCAAGCTGGACCTGACAGACAACCAGCTGACCACACTGCCCTGGCTGGACTTGGGG  
 GCTTGTGATCTGAAGCTCAAAGGGAACCTTGTCTCTCCAGGCCCTTCTCAAAGGACAGTTTCCAAAA  
 ACTGAGGATCCTGGAGGTGCCTTATGCCTACCAGTGTGTCCCTATGGGATGTGTGCCAGCTTCTCAAG  
 GCCTCTGGGCAGTGGGAGGCTGAAGACCTTACCTTGTGATGAGGAGTCTTCAAAAAGGCCCTGGGCC  
 TCCTTGCCAGACAAGCAGAGAACCCTATGACCAGGACCTGGATGAGCTCCAGCTGGAGATGGAGGACTC  
 AAAGCCACACCCAGTGTCCAGTGTAGCCCTACTCCAGGCCCTTCAAGCCCTGTGAGTACCTCTTTGAA  
 AGCTGGGGCATCCGCCTGGCCGTGTGGCCATCGTGTGCTCTCCGTGCTGCAATGGACTGGTGTGCTGC  
 TGACCGTGTTCGCTGGCGGGCCTGTCCCTGCCCGGTCAGTTCGTTGTGGTAGGTGCGATTGCAGGCGC  
 CAACACCTTGACTGGCATTTCCTGTGGCCTTCTAGCCTCAGTCGATGCCCTGACCTTTGGTCAGTTCTCT  
 GAGTACGGAGCCCGCTGGGAGACGGGGCTAGGCTGCCGGGCCACTGGCTTCTGGCAGTACTTGGGTCCG  
 AGGCATCGGTGTGCTGCTCACTCTGGCCGAGTGCAGTGCAGCGTCTCCGTCTCCTGTGTCGGGCCCTA  
 TGGGAAGTCCCCCTCCCTGGGCAGCGTTCGAGCAGGGGTCTAGGCTGCCTGGCACTGGCAGGGCTGGCC  
 GCCGCGTGCCCTGGCCTCAGTGGGAGAATACGGGGCTCCCCACTCTGCCTGCCCTACGCGCCACCTG  
 AGGTCAGCCAGCAGCCCTGGCTTACCGTGGCCCTGGTGTGATGAACTCTTCTGTTTCTGGTGTGCT  
 GGCCGGTGCCTACATCAAAGTACTGTGACCTGCCCGGGGCGACTTTGAGGCCGTGGGACTGCGCC  
 ATGGTGAGGCACGTGCCCTGGCTCATCTTCGACAGCGGGCTCCTACTGTCCCCTGGCCTTCTCAGCT  
 TTGCCTCCATGTGGCCTTCTCCCTGTACGCCGAGGCGTCAAGTCTGTCCTGCTGGTGGTGTGCTGCC  
 CCTGCCTGCCTGCCTCAACCCACTGCTGTACTGCTCTTCAACCCCACTTCCGGGATGACCTTCCGGCG  
 CTTCCGGCCCCGCGAGGGGACTCAGGGCCCTAGCCTATGCTGCGGCCGGGAGCTGGAGAAGAGCTCCT  
 GTGATTACCCAGGCCCTGGTAGCCTTCTGATGTGGATCTCATTCTGGAAGCTTCTGAAGCTGGGCG  
 GCCCCTGGGCTGGAGACCTATGGCTTCCCTCAGTGACCCTCATCTCCTGTCAGCAGCCAGGGGCCCCC  
 AGGCTGGAGGGCAGCCATTGTGTAGAGCCAGAGGGGAACCACTTTGGGAACCCCAACCTCCATGGATG  
 GAGAAGTGTGCTGAGGGCAGAGGGATCTACGCCAGCAGGTGGAGGCTTGTGAGGGGTGGCGGCTTCA  
 GCCCTCTGGCTTGGCCTTTGCTTACACGTG

AG**CGGACCG**ACGCGTACGCGGCCGCTCGAG - GFP Tag - GTTTAA

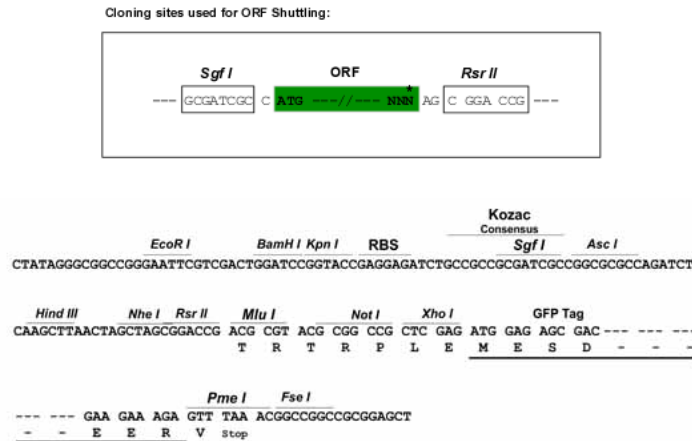
Protein Sequence: >RG219284 representing NM\_001017403  
 Red=Cloning site Green=Tags(s)

MPSPPGLRALWLCAALCASRRAGGAPQPGPGPTACPAPCHCQEDGIMLSADCSELGLSAVPGDLPLTAY  
 LDLSMNNLTELQPLFHHLRFLEELRLSGNHLSHIPGQAFSGLYSLKILMLQNNQLGGIPAEALWELPSL  
 QSLRLDANLISLVPERSFEGLSLRLWLDNLTIPVRALNNLPAQAMTLALNRISHIPDYAFQNL  
 SLVVLHLHNNRIQHLGTHSFEGLNLETLDLNYNKLQEFVPAIRTLGRLQELGFHNNNIKAPEKAFMGN  
 PLLQTIHFYDNP IQFVGRSAFQYLPKHLTSLNGAMDIQEF PDLKGTTSLEILTLTRAGIRLLPSGMCQQ  
 LPRLRVLEL SHNQIEELPSLHRCQKLEEIGLQHNRIWEIGADTFSQLSSLQALDLSWNAIRSIHPEAFST  
 LHSLVKLDLTDNQLTTLPLAGLGGLMHLKLGNLALSQAFSKDSFPKLRILEVPYAYQCCPYGMCASFFK  
 ASGQWEAEDLHLDDEESSKRPLGLLARQAENHYDQDLDELQLEMEDSKPHPSVQCSPTPGPFKCEYLFE  
 SWGIRLAVWAI VLLSVLCNGLVLLTVFAGGPVPLPPVKFVVGAIAGANTLTGISCGLLASVDALTFGQFS  
 EYGARWETGLGCRATGLAVLGSEASVLLLTLAAVQCSVSVSCVRAYGKSPSLGSVRAGVLGCLALAGLA  
 AALPLASVGEYGASPLCLPYAPPEGQPAALGFTVALVMMNSFCFLVAVAGAYIKLYCDLPRGDFEAVWDC  
 MVRHVAVLIFADGLLYCPVAFLSFASMLGLFPVTPEAVKSVLLVVLPLPACLNPLLYLLFNPHFRDDLRR  
 LRPRAGDSGPLAYAAAGELEKSSCDSTQALVAFSDVDLILEASEAGRPPGLETYGFPSVTLISCCQPGAP  
 RLEGSHCVEPEGNHFGNPQPSMDGELLRLRAEGSTPAGGGLSGGGGFQPSGLAFASHV

SGPTRRRLE - GFP Tag - V

Restriction Sites: SgfI-RsrII

Cloning Scheme:

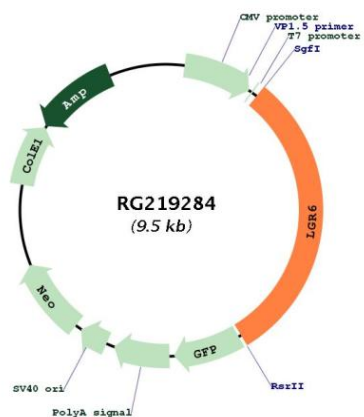


ACCN: NM\_001017403

ORF Size: 2901 bp

<b>OTI Disclaimer:</b>	The molecular sequence of this clone aligns with the gene accession number as a point of reference only. However, individual transcript sequences of the same gene can differ through naturally occurring variations (e.g. polymorphisms), each with its own valid existence. This clone is substantially in agreement with the reference, but a complete review of all prevailing variants is recommended prior to use. <a href="#">More info</a>
<b>OTI Annotation:</b>	This clone was engineered to express the complete ORF with an expression tag. Expression varies depending on the nature of the gene.
<b>Components:</b>	The ORF clone is ion-exchange column purified and shipped in a 2D barcoded Matrix tube containing 10ug of transfection-ready, dried plasmid DNA (reconstitute with 100 ul of water).
<b>Reconstitution Method:</b>	<ol style="list-style-type: none"><li>1. Centrifuge at 5,000xg for 5min.</li><li>2. Carefully open the tube and add 100ul of sterile water to dissolve the DNA.</li><li>3. Close the tube and incubate for 10 minutes at room temperature.</li><li>4. Briefly vortex the tube and then do a quick spin (less than 5000xg) to concentrate the liquid at the bottom.</li><li>5. Store the suspended plasmid at -20°C. The DNA is stable for at least one year from date of shipping when stored at -20°C.</li></ol>
<b>RefSeq:</b>	<a href="#">NM_001017403.1</a> , <a href="#">NP_001017403.1</a>
<b>RefSeq Size:</b>	3458 bp
<b>RefSeq ORF:</b>	2904 bp
<b>Locus ID:</b>	59352
<b>UniProt ID:</b>	<a href="#">Q9HBX8</a>
<b>Cytogenetics:</b>	1q32.1
<b>Protein Families:</b>	Druggable Genome, Transmembrane
<b>Gene Summary:</b>	This gene encodes a member of the leucine-rich repeat-containing subgroup of the G protein-coupled 7-transmembrane protein superfamily. The encoded protein is a glycoprotein hormone receptor with a large N-terminal extracellular domain that contains leucine-rich repeats important for the formation of a horseshoe-shaped interaction motif for ligand binding. Alternative splicing of this gene results in multiple transcript variants. [provided by RefSeq, Jul 2008]

Product images:



Circular map for RG219284