

Product datasheet for **RG219257**

ENO3 (NM_001976) Human Tagged ORF Clone

Product data:

Product Type:	Expression Plasmids
Product Name:	ENO3 (NM_001976) Human Tagged ORF Clone
Tag:	TurboGFP
Symbol:	ENO3
Synonyms:	GSD13; MSE
Mammalian Cell Selection:	Neomycin
Vector:	pCMV6-AC-GFP (PS100010)
E. coli Selection:	Ampicillin (100 ug/mL)
ORF Nucleotide Sequence:	>RG219257 representing NM_001976 Red=Cloning site Blue=ORF Green=Tags(s)

TTTTGTAATACGACTCACTATAGGGCGGCCGGAATTCGTCGACTGGATCCGGTACCGAGGAGATCTGCC
GCC**CGATCGCC**

ATGGCCATGCAGAAAATCTTTGCCGGGAAATCTTGGACTCCAGGGGCAACCCACGGTGGAGGTGGACC
TGCACACGGCCAAGGGCCGATTCCGAGCAGCTGTGCCAGTGGGGCTTCCACGGGTATCTATGAGGCTCT
GGAAGTAAAGAGACGGAGACAAAGGCCGCTACCTGGGAAAGGAGTCTGAAGGCTGTGGAGAATCAAC
AATACTCTGGGCCCTGCTCTGCTGCAAAAGAACTAAGCGTTGCGGATCAAGAAAAAGTTGACAAATTTA
TGATTGAGCTAGATGGGACCGAGAATAAGTCCAAGTTTGGGGCCAATGCCATCCTGGGCGTGTCTTGGC
CGTGTGTAAGGCCGGGAGCAGCTGAGAAGGGGGTCCCCCTGTACCGCCACATCGCAGATCTCGCTGGGAAC
CCTGACCTCATACTCCCAGTGCCAGCCTTCAATGTGATCAACGGGGGCTCCCATGCTGGAACAAGCTGG
CCATGCAGGAGTTCATGATTCTGCCTGTGGGAGCCAGCTCCTCAAGGAAGCCATGCGCATTGGCGCCGA
GGTCTACCACCACCTCAAGGGGGTCAAGGCCAAGTATGGGAAGGATGCCACCAATGTGGGTGATGAA
GGTGGCTTCGCACCCAACATCCTGGAGAACAATGAGGCCCTGGAGCTGCTGAAGACGGCCATCCAGGCGG
CTGGTTACCCAGACAAGGTGGTATCGGCATGGATGTGGCAGCATCTGAGTCTATCGCAATGGGAAGTA
CGATCTTGACTTCAAGTCGCCTGATGATCCCGCACGGCACATCACTGGGAGAAGCTCGGAGAGCTGTAT
AAGAGCTTTATCAAGAATACTCCTGTGGTCTCCATCGAAGACCCCTTTGACCAGGATGACTGGGCCACTT
GGACCTCCTTCTCGGGGTGAACATCCAGATTGTGGGGGATGACTTGACAGTACCAACCCCAAGAG
GATTGCCAGGCCGTTGAGAAGAAGGCCTGCAACTGTCTGCTGCTGAAGGTCAACCAGATCGGCTCGGTG
ACCGAATCGATCCAGGCGTGCAAACTGGCTCAGTCTAATGGCTGGGGGTGATGGTGAAGCCACCGCTCTG
GGGAGACTGAGGACACATTCATTGCTGACCTTGTGGTGGGGCTCTGCACAGGACAGATCAAGACTGGCGC
CCCCTGCCGCTCGGAGCGTCTGGCAAATAACAACCAACTCATGAGGATCGAGGAGGCTCTTGGGGACAAG
GCAATCTTTGCTGGACGCAAGTCCGTAACCCGAAGGCCAAG

ACGCGTACGCGGCCGCTCGAG - GFP Tag - GTTTAA



[View online »](#)

Protein Sequence: >RG219257 representing NM_001976
Red=Cloning site Green=Tags(s)

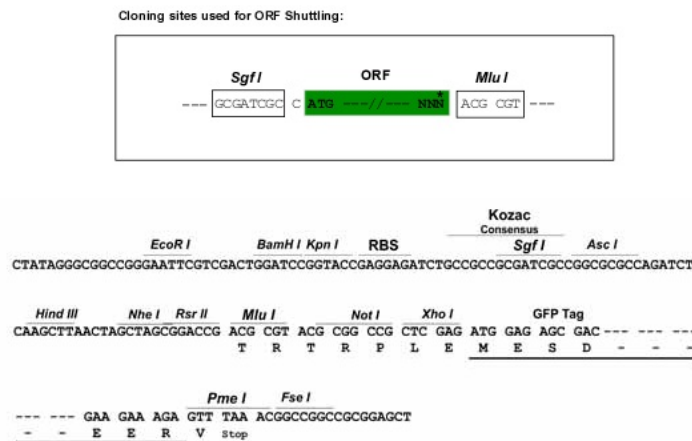
MAMQKIFAREILDSRGNPTVEVDLHTAKGRFRAAVPSGASTGIYEALERDGDGKGRYLKGVKAVENIN
 NTLGPALLQKLSVADQEKVDFMIELDGTENKSKFGANAILGVSLAVCKAGAAEKVPLYRHIADLAGN
 PDLILPVPAFNVINGGSHAGNKLAMQEFMILPVGASSFKEAMRIGAEVYHHLKGVKAKYKDATNVGDE
 GGFAPNILENNEALELLKTAIQAAAGYDPKVVIGMDVAASEFYRNGKYDLDFKSPDDPARHITGEKLGELY
 KSFYKPNYPVVSIEDPFDQDDWATWTSFLSGVNIQIVGDDLTVTNPKRIAQAVEKKACNLLLLKVNQIGSV
 TESIQAACKLAQSNWGMVMVSHRSGETEDTFIADLVVGLCTGQIKTGAPCRSERLAKYNQLMRIEALGDK
 AIFAGRKFRNPKAK

TRTRPLE - GFP Tag - V

Chromatograms: https://cdn.origene.com/chromatograms/ja2715_g03.zip

Restriction Sites: SgfI-MluI

Cloning Scheme:



ACCN: NM_001976

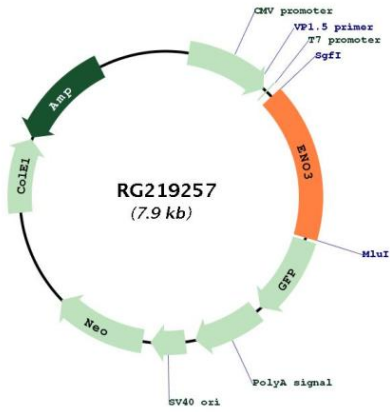
ORF Size: 1302 bp

OTI Disclaimer: Due to the inherent nature of this plasmid, standard methods to replicate additional amounts of DNA in *E. coli* are highly likely to result in mutations and/or rearrangements. Therefore, OriGene does not guarantee the capability to replicate this plasmid DNA. Additional amounts of DNA can be purchased from OriGene with batch-specific, full-sequence verification at a reduced cost. Please contact our customer care team at custsupport@origene.com or by calling 301.340.3188 option 3 for pricing and delivery.

The molecular sequence of this clone aligns with the gene accession number as a point of reference only. However, individual transcript sequences of the same gene can differ through naturally occurring variations (e.g. polymorphisms), each with its own valid existence. This clone is substantially in agreement with the reference, but a complete review of all prevailing variants is recommended prior to use. [More info](#)

OTI Annotation:	This clone was engineered to express the complete ORF with an expression tag. Expression varies depending on the nature of the gene.
Components:	The ORF clone is ion-exchange column purified and shipped in a 2D barcoded Matrix tube containing 10ug of transfection-ready, dried plasmid DNA (reconstitute with 100 ul of water).
Reconstitution Method:	<ol style="list-style-type: none">1. Centrifuge at 5,000xg for 5min.2. Carefully open the tube and add 100ul of sterile water to dissolve the DNA.3. Close the tube and incubate for 10 minutes at room temperature.4. Briefly vortex the tube and then do a quick spin (less than 5000xg) to concentrate the liquid at the bottom.5. Store the suspended plasmid at -20°C. The DNA is stable for at least one year from date of shipping when stored at -20°C.
RefSeq:	NM_001976.2 , NP_001967.1
RefSeq Size:	1494 bp
RefSeq ORF:	1305 bp
Locus ID:	2027
UniProt ID:	P13929
Cytogenetics:	17p13.2
Domains:	enolase
Protein Pathways:	Glycolysis / Gluconeogenesis, Metabolic pathways, RNA degradation
Gene Summary:	This gene encodes one of the three enolase isoenzymes found in mammals. This isoenzyme is found in skeletal muscle cells in the adult where it may play a role in muscle development and regeneration. A switch from alpha enolase to beta enolase occurs in muscle tissue during development in rodents. Mutations in this gene have been associated with glycogen storage disease. Alternatively spliced transcript variants encoding different isoforms have been described. [provided by RefSeq, Jul 2010]

Product images:



Circular map for RG219257