

Product datasheet for **RG219233**

DENN (MADD) (NM_130473) Human Tagged ORF Clone

Product data:

Product Type:	Expression Plasmids
Product Name:	DENN (MADD) (NM_130473) Human Tagged ORF Clone
Tag:	TurboGFP
Symbol:	MADD
Synonyms:	DEEAH; DENN; IG20; NEDDISH; RAB3GEP; RabGEF
Mammalian Cell Selection:	Neomycin
Vector:	pCMV6-AC-GFP (PS100010)
E. coli Selection:	Ampicillin (100 ug/mL)
ORF Nucleotide Sequence:	>RG219233 representing NM_130473 Red=Cloning site Blue=ORF Green=Tags(s)

TTTTGTAATACGACTCACTATAGGGCGCCGGGAATTCGTCGACTGGATCCGGTACCGAGGAGATCTGCC
GCC**CGATCGCC**

ATGGTGCAAAAGAAGAAGTTCTGTCTCGGTTACTTGACTATCTAGTGATCGTAGGGCCAGGCACCCGA
GCAGTGATAGCGTGGCCAGACTCTGAATTGCTACGGCGATACCCCTTGGAGGATCACACTGAGTTTCC
CCTGCCCCAGATGTAGTGTCTTCTGCCAGCCGAGGGCTGCCTGAGCGTGGCGAGCGCGCATGAGC
CTTCGGGATGATACCTCTTTGTCTTACCCTCACTGACAAGGACTGGAGTCACGCGATATGGCATCT
GTGTTAACTTCTACCGCTCCTTCCAAAAGCGAATCTCTAAGGAGAAGGGGAAGGTGGGGCAGGGTCCCC
TGGGAAGGAAGGAACCCATGCCACCTGTGCCTCAGAAGAGGGTGGCACTGAGAGCTCAGAGAGTGGCTCA
TCCTGCAGCCTCTCAGTGCTGACTCTACCCCTGATGTGAACCAGTCTCCTCGGGCAAACGCCGGGCCA
AGGCGGGGAGCCGCTCCCGCAACAGTACTCTCACGTCCCTGTGCGTGCTCAGCCACTACCCCTTCTTCTC
CACCTTCCGAGAGTGTTGTATACTCTCAAGCGCTGGTGGACTGCTGTAGTGAGCGCCTTCTGGGCAAG
AACTGGGCATCCCTCGAGGCGTACAAAGGACACCATGTGGCGGATCTTACTGGATCGCTGCTGGTAG
AGGAGAAGTCAAGTGCCCTTCTGCATGACCTTCGAGAGATTGAGGCTGGATCTATCGATTGCTGCGCTC
CCCAGTACCCGTCTCTGGGCAGAAGCGAGTAGACATCGAGTCCACCCAAAGAGCTCCAGCCAGCTCTG
ACCTTTGCTCTTCCAGACCCATCTCGATTACCCCTAGTGGATTTCCCACTGCACCTTCCCTGGAACCTC
TAGGTGTGGACGCTGTCTCCAGGTGCTAACCTGCATTCTGTTAGAGCACAAGGTGGTGCTACAGTCCCG
AGACTACAATGCACTCTCCATGTCTGTGATGGCATTCTGGCAATGATCTACCCACTGGAGTATATGTTT
CCTGTCATCCCGCTGCTACCCACCTGCATGGCATCAGCAGAGCAGCTGCTGTTGGCTCCAACCCCGTACA
TCATTGGGGTTCCTGCCAGCTTCTTCTCTACAACTGGACTTCAAAATGCCTGATGATGTATGGCTAGT
GGATCTGGACAGCAATAGGGTGATTGCCCCACCAATGCAGAAGTGTGCCTATCCTGCCAGAACCAGAA
TCACTAGAGCTGAAAAAGCATTTAAAGCAGGCCTTGGCCAGCATGAGTCTCAACACCCAGCCCATCTCA
ATCTGGAGAAATTCATGAGGGCCAGGAGATCCCCCTTCTTGGGAAGGCCCTTCTAATGACCTGCAGTC
CACACCGTCCACTGAATCAACCCACTCATCTATGGCAATGATGTGGATTCTGTGGATGTTGCAACCAGG



GTTGCCATGGTACGGTTCTTCAATTCCGCCAACGTGCTGCAGGGATTTTCAGATGCACACGCGTACCCTGC
 GCCTCTTTCCTCGGCCTGTGGTAGCTTTTCAAGCTGGCTCCTTTCTAGCCTCACGTCCCCGGCAGACTCC
 TTTTGCCGAGAAATTGGCCAGGACTCAGGCTGTGGAGTACTTTGGGGAATGGATCCTTAACCCACCAAC
 TATGCCTTTCAGCGAATTCACAACAATATGTTTGTATCCAGCCCTGATTGGTGACAAGCCAAAGTGGTATG
 CTCATCAGCTGCAGCCTATCCACTATCGCGTCTATGACAGCAATCCCAGCTGGCTGAGGCCCTGAGTGT
 ACCACCAGAGCGGACTCTGACTCCGAACCTACTGATGATAGTGGCAGTGATAGTATGGATTATGACGAT
 TCAAGCTCTTCTACTCCTCCCTTGGTGACTTTGTGAGTAAATGATGAAATGTGACATTAATGGTGATA
 CTCCCAATGTGGACCCTCTGACACATGCAGCACTGGGGGATGCCAGCGAGGTGGAGATTGACGAGCTGCA
 GAATCAGAAGGAAGCAGAAGAGCCTGGCCAGACAGTGAGAACTCTCAGGAAAACCCCCACTGCGCTCC
 AGCTCTAGCACCACAGCCAGCAGCAGCCCCAGCACTGTATCCACGGAGCCAACTCTGAACCTGCTGACT
 CTACGGAGATGGATGATAAGGCAGCAGTAGGCGTCTCCAAGCCCCCTCCTTCCGTGCCTCCAGCATTGG
 CAAATCGAACGTGGACAGACGTGAGGCAGAAATGGAGAGGGGTGAGTGCAGCGGCGAATCTATGACAA
 CCATACTCGAGCCCAATATGGCTTTCCCTGAGGAAGATGAGGATGAGCAGGGGAAAGTTACACTC
 CCCGATTCAGCCAACATGTCAGTGGCAATCGGGCTCAAAGCTGCTGCGGCCAACAGCTTGAGACTGGC
 AAGTGACTCAGATGCAGAGTCTGAGTCTCGGGCAAGCTCTCCAACCTCCACCGTCTCCAACACCAGCACC
 GAGGGCTTCGGGGGCATCATGTCTTTTGGCAGCAGCCTCTATCGGAACCACAGTACCAGCTTCAGCTTT
 CAAACCTCACACTGCCCACAAAGGTGCCCGAGAGAAGGCCACGCCCTTCCCAGTCTGAAAGTATTTGG
 GCTAAATACTCTAATGGAGATTGTTACTGAAGCCGGCCCCGGGAGTGGTGAAGGAAAACAGGAGGGCGTTA
 GTGGATCAGAAGTCATCTGTCAATAAACACAGCCCAACAGTGAAGGAGAAACCTCCATCACCCAGGGTC
 GATCCAGCAATTTAGTGAGAACCAGCAGTTCCTGAAGGAGGTGGTGACAGCGTCTGGACGGCCAGGG
 AGTTGGCTGGCTCAACATGAAAAGGTGCGCCGGCTGCTGGAGAGCGAGCAGTGCAGTCTTTGTCTGT
 AGCAAGCTGAACCGCATGGTGCAGTCAAGGACGATGCCCGCAGGACATCATCCCGATGTGGAGATCA
 GTCGGAAGGTGTACAAGGGAATTTAGACTCTCAAGTGTACAGTCTCAGCTTGAGCAGTCCATATGC
 CCACGCGGTCTGGGTGGCATGGCCAGCATCTTTGGGCTTTTGGAGATTGCCAGACCCACTACTATAGT
 AAAGAACCAGACAAGCGGAAGAGAAGTCCAACAGAAAGTGAATAACCCAGTTGGCAAGGATCCTGGCC
 TAGCTGGCGGGGGACCCAAAGGCTATGGCACAACTGAGAGTCCACAACCTGGGACCTCGGGCACCAAG
 TGCCACAGGAAAGGTCCTAAGGAACTGGACACCAGAAGTTAAAGGAAGAAAATTTTATAGCATCTATT
 GGGCTGAAGTAATCAAACCTGTCTTTGACCTTGGTGAGACAGAGGAGAAAAAGTCCCAGATCAGCGCAG
 ACAGTGGTGTGAGCCTGACGTCTAGTCCCAGAGGACTGATCAAGACTCTGTCATCGGCGTGAAGTCCAGC
 TGTTATGATCCGAGCTCAAGTCAGGATCTGAAGTTAGCACCGTGGTGAAGTAAAGTCTGGAGAGACC
 CTTGGAGCTGACAGTACTTGGCAGCAATGCAGGTGATGGACCAGGTGGCGAGGCGAGTGTTCACCTGG
 CAAGCTCTCGGGCACTTTGTCTGATAGTAAATGAGACCAACTCTGCCACAAGCACCATCTTTGGTAA
 AGCCACAGCTTGAAGCCAAGCATAAAGGAGAAGCTGGCAGGCAGCCCCATTCTGACTTCTGAAGATGTG
 AGCCAGCGAGTCTATCTATGAGGGACTCCTAGGCAAAGAGCGTTCTACTTTATGGGACCAATGCAAT
 TCTGGGAAGATGCCTTCTTAGATGTCTGTGATGTTGGAGAGAGAAGGGATGGGTATGGACCAGGGTCCCCA
 GGAAATGATCGACAGGTACCTGTCCCTGGAGAACATGACCGGAAGCGCCTGGAAGATGATGAAGATCGC
 TTGCTGGCCACACTTCTGCACAACCTCATCTCCTACATGCTGCTGATGAAGGTAATAAAGATGACATCC
 GCAAGAAGGTGAGGCGCCTAATGGGAAAGTCGCACATTTGGGCTTGTGTACAGCCAGCAAAATCAATGAGT
 GCTTGTGATCAGCTGGCGAACCTGAATGGACGCGATCTCTATCTGGTCCAGTGGCAGCCGACATGAAG
 AAGCAGACATTTGTGGTACATGCAGGGACAGATACAAACGAGATATCTTTTTCATGGAGGTGTGGATG
 ACTGTGTGGTGTGCGTAGTAACATCGGAACAGTGTATGAGCGCTGGTGTACGAGAAGCTCATCAACAT
 GACCTACTGTCCCAAGACGAAGGTGTTGTGCTTGTGGCGTAGAAATGGCTCTGAGACCCAGCTCAACAAG
 TTCTATACTAAAAAGTGTGCGGAGCTGTACTACTGTGTGAAGGACAGCATGGAGCGCGCTGCCGCCGAC
 AGCAAAGCATCAAACCCGACCTGAATGGGTGGCGAGTTCCTGTGCAGGACCTGAAGACTGGTGAAGG
 TGGCCTGTGCAGGTGACCCTGGAAGGGATCAACCTCAAATTCATGCACAATCAGTTTTTATAGAGCTG
 AATCACATTAAGGATGCAATACAGTTCGAGGCGTCTTTGTCTGGAGGAATTTGTCTGAAATTAAG
 AAGTGGTGAAGCCACAAGTACAAGACACCAATGGCCACGAAATCTGCTACTCCGATTATGTCTCTCTC
 GTACGTGGCTGCAGTTCATAGCAGTGAAGGATCTCAGAACCCCGCCCGGCTGTCTCTAGC

AGCGGACCGACGCGTACGCGGCCGCTCGAG - GFP Tag - GTTTAA

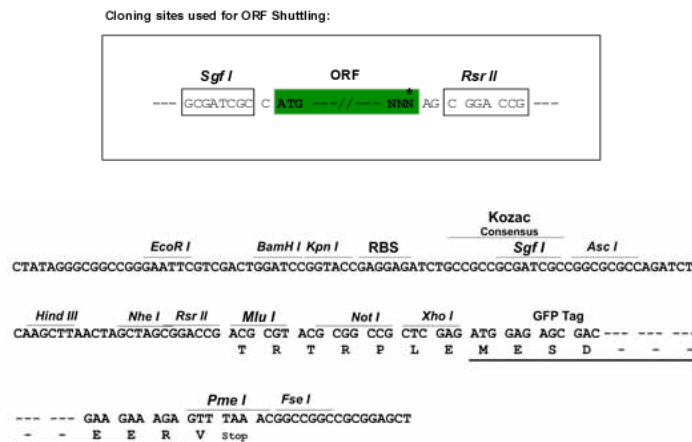
Protein Sequence: >RG219233 representing NM_130473
 Red=Cloning site Green=Tags(s)

MVQKKKFCPRLLDYLVIIGARHPSSDSVAQTPELLRRYPLEDHTEFFLPPDVVFFCQPEGCLSVRQRMS
 LRDDTSFVFTLTDKDTGVTRYGICVNFYRSFQKRISKEKGGGAGSRGKEGTHATCASEEGGTESSESGS
 SLQPLSADSTPDVNQSPRGKRRAKAGSRSRNSTLTSCLVLSHYPPFFSTFRECLYTLKRLVDCSERLLGK
 KLGIPRGVQRDTMWRIFTGSLLEVEKSSALLHDLREIEAWIYRLLRSPVPSGQKRVDIEVLPQELQPAL
 TFALPDPSPRFTLVDFPLHLPLELLGVDAQLQVLTCLLLEHKVVLSQRDYNALSMSVMAFVAMIYPLEYMF
 PVIPLLPCTMASAEQLLLAPTPYIIGVPASFFLYKLDKMPDDVWLVDLDSNRVIAPTNAEVLPIPEPE
 SLELKKHLKQALASMSLNTQPILNLEKFHEGQEIPLLLGRPSNDLQSTPSTEFNLIYGNVDVSDVATR
 VAMVRFNSANVLQGFQMHTRTLRLFPRPVVAFQAGSFLASRPRQTPFAEKLARTQAVEYFGEWILNPTN
 YAFQRIHNNMFDPALIGDKPKWYAHQLQPIHYRVYDSNSQLAEALSVPPERDSDEPTDDSGSDSMDYDD
 SSSSYSSLGDFVSEMMKCDINGDTPNVDPLTHAALGDASEVEIDELQNQKEAEEPGPDSSENSQENPLRS
 SSSTTASSPSTVIHGANSEPADSTEMDDKAAVGVSKPLPSVPPSIGKSNVDRRQAEIGESVRRRIYDN
 PYFEPQYGFPEEDEDQGESYTPRFSQHVSNGRAQKLLRPNSLRLASDSAESDRASSPNSTVSNSTST
 EFGGGIMSFASSLYRNHSTSFSLSNLTLPTKGAREKATPFPSLKVFGNLTLMEIVTEAGPGSGENRRAL
 VDQKSSVIKHSPTVKREPPSPQGRSSNSSENQFLKEVHVSVDGQGVGWLNMKKVRRLESEQLRVFVL
 SKLNRMVQSEDDARQDIIPDVEISRKYKGMDDLKCTVL SLEQSYAHAGLGGMASIFGLLEIAQTHYYS
 KEPDKRKRSPTESVNTVPVKDPLAGRGDPKAMAQLRVPQLGPRAPSATGKGPKELDTRSLKEENFIASI
 GPEVIKPVFDLGETEEKSQISADSGVSLTSSSQRTDQDSVIGVSPAVMIRSSSQDSEVSTVVSNSGET
 LGADSDLSSNAGDGGPGEESVHLASSRGTLSDEIETNSATSTIFGKAHSLKPSIKEKLAGSPIRTSEDV
 SQRVYLYEGLLGKERSTLWDQMWFEDAFLDVAMLEREGMGMDQGPQEMIDRYLSLGEHDRKREDEDED
 LLATLLHNLISYMLLMKVNKNDIRKKVRRLMGKSHIGLVYSQQINEVLDQLANLNGRDL SIWSSGSRHMK
 KQTFVVHAGTDINGDIFFMVDCDCVLRNSNIGTVYERWWYEKLINMTCYCPKTKVLCWRRNGSETQLNK
 FYTKKCRELYYCVKDSMERAARQSQIKGPELGGFPVQDLKTGEGGLLQVTLLEGINLKFMHNVQFIEL
 NHIKKCNTVRGVFVLEEFVPEIKEVVSHPYKTPMAHEICYSVLCVLSYVAAVHSSEEDLRTPPRPVSS

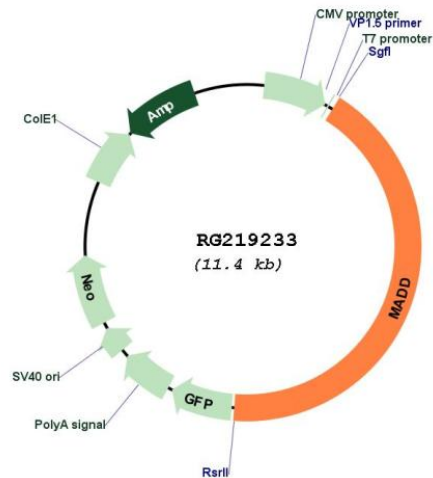
SGPTRRRLE - GFP Tag - V

Restriction Sites: SgfI-RsrII

Cloning Scheme:



Plasmid Map:



ACCN: NM_130473

ORF Size: 4824 bp

OTI Disclaimer: The molecular sequence of this clone aligns with the gene accession number as a point of reference only. However, individual transcript sequences of the same gene can differ through naturally occurring variations (e.g. polymorphisms), each with its own valid existence. This clone is substantially in agreement with the reference, but a complete review of all prevailing variants is recommended prior to use. [More info](#)

OTI Annotation: This clone was engineered to express the complete ORF with an expression tag. Expression varies depending on the nature of the gene.

Components: The ORF clone is ion-exchange column purified and shipped in a 2D barcoded Matrix tube containing 10ug of transfection-ready, dried plasmid DNA (reconstitute with 100 ul of water).

Reconstitution Method:

1. Centrifuge at 5,000xg for 5min.
2. Carefully open the tube and add 100ul of sterile water to dissolve the DNA.
3. Close the tube and incubate for 10 minutes at room temperature.
4. Briefly vortex the tube and then do a quick spin (less than 5000xg) to concentrate the liquid at the bottom.
5. Store the suspended plasmid at -20°C. The DNA is stable for at least one year from date of shipping when stored at -20°C.

RefSeq: [NM_130473.2](#), [NP_569829.2](#)

RefSeq Size: 5914 bp

RefSeq ORF: 4827 bp

Locus ID: 8567

UniProt ID: [Q8WXG6](#)

Cytogenetics: 11p11.2

Protein Families: Druggable Genome

Gene Summary: Tumor necrosis factor alpha (TNF-alpha) is a signaling molecule that interacts with one of two receptors on cells targeted for apoptosis. The apoptotic signal is transduced inside these cells by cytoplasmic adaptor proteins. The protein encoded by this gene is a death domain-containing adaptor protein that interacts with the death domain of TNF-alpha receptor 1 to activate mitogen-activated protein kinase (MAPK) and propagate the apoptotic signal. It is membrane-bound and expressed at a higher level in neoplastic cells than in normal cells. Several transcript variants encoding different isoforms have been described for this gene. [provided by RefSeq, Jul 2008]