

Product datasheet for **RG219204**

CD64 (FCGR1B) (NM_001004340) Human Tagged ORF Clone

Product data:

Product Type: Expression Plasmids
Product Name: CD64 (FCGR1B) (NM_001004340) Human Tagged ORF Clone
Tag: TurboGFP
Symbol: CD64
Synonyms: CD64b; FCG1; Fcgamma1a; FCGR1; FCGR1A; FcRI; IGFR1; IGFRB
Mammalian Cell Selection: Neomycin
Vector: pCMV6-AC-GFP (PS100010)
E. coli Selection: Ampicillin (100 ug/mL)
ORF Nucleotide Sequence: >RG219204 representing NM_001004340
Red=Cloning site Blue=ORF Green=Tags(s)

TTTTGTAATACGACTCACTATAGGGCGGCCGGAATTCGTCGACTGGATCCGGTACCGAGGAGATCTGCC
GCC**CGATCGCC**

ATGTGGTCTTGACAACCTGCTCCTTTGGGGCTGGCTACTACTGCAGGTCTCCAGCAGAGTCTTCATGG
AAGGAGAACCTCTGGCCTTGAGGTGTATGCGTGAAGGATAAGCTGGTGTACAATGTGCTTTACTATCG
AAATGGCAAAGCCTTTAAGTCTTCCACTGGAATTCTAACCTCGCCATTCTGAAAACCAACATAAGTCAC
AATGGCACCTACCATTGCTCAGGCATGGGAAAGCATCGCTACACATCAGCAGGAATATCACAATACACTG
TGAAAGGCCTCCAGTTACCAACTCTGTCTGGTTTCATGTCCTTTCTATCTGGCAGTGGGAATAATGTT
TTTAGTGAACACTGTTCTCTGGGTGACAATACGTAAGAAGTGAAGAAAGAAAAGTGAATTTAGAA
ATCTCTTTGGATTCTGGTTCATGAGAAGAAGTAATTTCCAGCCTTCAAGAAGACAGACATTTAGAAGAAG
AGCTGAAATGTCAGGAACAAAAGAAGAACAGTGCAGGAAGGGGTGCACCGGAAGGAGCCCCAGGGGGC
CACG

ACGCGTACGCGGCCGCTCGAG - GFP Tag - GTTTAA

Protein Sequence: >RG219204 representing NM_001004340
Red=Cloning site Green=Tags(s)

MWFLTLLLLWGWLLLQVSSRVFMEGEPLALRCHAWKDKLYYVNLYYRNGKAFKFFHWSNLAILKTNISH
NGTYHCSGMGKHYTSAGISQYTVKGLQLPTPVWFHVLFYLAVGIMFLVNTVLWVTIRKELKRKKKWNLE
ISLDSGHEKKVISSLQEDRHLEELKCQEKEQLQEGVHRKEPQGAT

TRTRPLE - GFP Tag - V

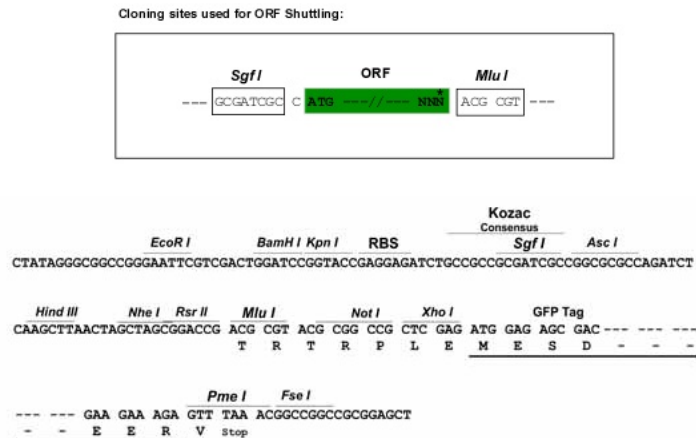
Chromatograms: https://cdn.origene.com/chromatograms/ja2542_a06.zip



[View online »](#)

Restriction Sites: SgfI-MluI

Cloning Scheme:



ACCN: NM_001004340

ORF Size: 564 bp

OTI Disclaimer: Due to the inherent nature of this plasmid, standard methods to replicate additional amounts of DNA in *E. coli* are highly likely to result in mutations and/or rearrangements. Therefore, OriGene does not guarantee the capability to replicate this plasmid DNA. Additional amounts of DNA can be purchased from OriGene with batch-specific, full-sequence verification at a reduced cost. Please contact our customer care team at custsupport@origene.com or by calling 301.340.3188 option 3 for pricing and delivery.

The molecular sequence of this clone aligns with the gene accession number as a point of reference only. However, individual transcript sequences of the same gene can differ through naturally occurring variations (e.g. polymorphisms), each with its own valid existence. This clone is substantially in agreement with the reference, but a complete review of all prevailing variants is recommended prior to use. [More info](#)

OTI Annotation: This clone was engineered to express the complete ORF with an expression tag. Expression varies depending on the nature of the gene.

Components: The ORF clone is ion-exchange column purified and shipped in a 2D barcoded Matrix tube containing 10ug of transfection-ready, dried plasmid DNA (reconstitute with 100 ul of water).

- Reconstitution Method:**
1. Centrifuge at 5,000xg for 5min.
 2. Carefully open the tube and add 100ul of sterile water to dissolve the DNA.
 3. Close the tube and incubate for 10 minutes at room temperature.
 4. Briefly vortex the tube and then do a quick spin (less than 5000xg) to concentrate the liquid at the bottom.
 5. Store the suspended plasmid at -20°C. The DNA is stable for at least one year from date of shipping when stored at -20°C.

RefSeq: [NM_001004340.1](#), [NP_001004340.1](#)

RefSeq Size: 570 bp

RefSeq ORF: 567 bp

Locus ID: 2210

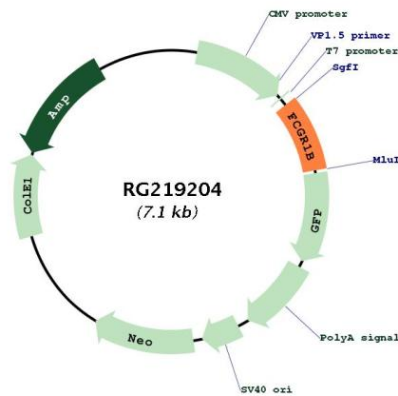
UniProt ID: [Q92637](#)

Cytogenetics: 1p11.2

Protein Families: Transmembrane

Gene Summary: Three distinct, but closely related classes of receptors that bind the Fc portion of IgG have been identified (Fcgamma RI, II and III). The FcgammaRI family consists of three closely related genes termed A, B, and C. This gene likely encodes a non-functional protein that is not detectable at the cell surface and binds ligand with low affinity. [provided by RefSeq, Nov 2019]

Product images:



Circular map for RG219204