

Product datasheet for **RG219174**

DENN (MADD) (NM_130471) Human Tagged ORF Clone

Product data:

Product Type: Expression Plasmids
Product Name: DENN (MADD) (NM_130471) Human Tagged ORF Clone
Tag: TurboGFP
Symbol: MADD
Synonyms: DEEAH; DENN; IG20; NEDDISH; RAB3GEP; RabGEF
Mammalian Cell Selection: Neomycin
Vector: pCMV6-AC-GFP (PS100010)
E. coli Selection: Ampicillin (100 ug/mL)
ORF Nucleotide Sequence: >RG219174 representing NM_130471
Red=Cloning site Blue=ORF Green=Tags(s)

TTTTGTAATACGACTCACTATAGGGCGGCCGGAATTCGTCGACTGGATCCGGTACCGAGGAGATCTGCC
GCC**CGATCGCC**

ATGGTGCAAAAGAAGAAGTTCTGTCTCGGTTACTTGACTATCTAGTGATCGTAGGGCCAGGCACCCGA
GCAGTGATAGCGTGGCCAGACTCTGAATTGCTACGGCGATACCCCTTGGAGGATCACACTGAGTTTCC
CCTGCCCCAGATGTAGTGTCTTCTGCCAGCCGAGGGCTGCCTGAGCGTGGCAGCGGCGCATGAGC
CTTCGGGATGATACCTCTTTGTCTTACCCTCACTGACAAGGACTGGAGTCACGCGATATGGCATCT
GTGTTAACTTCTACCGCTCCTTCCAAAAGCGAATCTCTAAGGAGAAGGGGAAGGTGGGGCAGGGTCCCC
TGGGAAGGAAGGAACCCATGCCACCTGTGCCTCAGAAGAGGGTGGCACTGAGAGCTCAGAGAGTGGCTCA
TCCTGCAGCCTCTCAGTGCTGACTCTACCCCTGATGTGAACCAGTCTCCTCGGGCAAACGCCGGGCCA
AGGCGGGGAGCCGCTCCCGCAACAGTACTCTCACGTCCCTGTGCGTGCTCAGCCACTACCCCTTCTTCTC
CACCTTCCGAGAGTGTTGTATACTCTCAAGCGCTGGTGGACTGCTGTAGTGAGCGCTTCTGGGCAAG
AACTGGGCATCCCTCGAGGCGTACAAAGGACACCATGTGGCGGATCTTACTGGATCGCTGCTGGTAG
AGGAGAAGTCAAGTGCCCTTCTGCATGACCTTCGAGAGATTGAGGCTGGATCTATCGATTGCTGCGCTC
CCCAGTACCCGTCTCTGGCAGAAGCGAGTAGACATCGAGGCTTACCCCAAGAGCTCCAGCCAGCTCTG
ACCTTTGCTCTTCCAGACCCATCTCGATTACCCCTAGTGGATTTCCCACTGCACCTCCCTTGGAACTTC
TAGGTGTGGACGCTGTCTCCAGGTGCTAACCTGCATTCTGTTAGAGCACAAGGTGGTGCTACAGTCCCG
AGACTACAATGCACTCTCCATGTCTGTGATGGCATTCTGGCAATGATCTACCCACTGGAGTATATGTTT
CCTGTCATCCCGCTGCTACCCACCTGCATGGCATCAGCAGAGCAGCTGCTGTTGGCTCCAACCCCGTACA
TCATTGGGGTTCCTGCCAGCTTCTTCTCTACAACTGGACTTCAAAATGCCTGATGATGTATGGCTAGT
GGATCTGGACAGCAATAGGGTGATTGCCCCACCAATGCAGAAGTGTGCCTATCCTGCCAGAACCAGAA
TCACTAGAGCTGAAAAAGCATTTAAAGCAGGCCTTGGCCAGCATGAGTCTCAACACCCAGCCCATCTCA
ATCTGGAGAAATTCATGAGGGCCAGGAGATCCCCCTTCTTGGGAAGGCTTCTAATGACCTGCAGTC
CACACCGTCCACTGAATCAACCCACTCATCTATGGCAATGATGTGGATTCTGTGGATGTTGCAACCAGG



GTTGCCATGGTACGGTTCTTCAATTCGCCAACGTGCTGCAGGGATTTTCAGATGCACACGCGTACCCTGC
 GCCTCTTTCCTCGGCCTGTGGTAGCTTTTCAAGCTGGCTCCTTTCTAGCCTCACGTCCCCGGCAGACTCC
 TTTTGCCGAGAAATTGGCCAGGACTCAGGCTGTGGAGTACTTTGGGGAATGGATCCTTAACCCACCAAC
 TATGCCTTTCAGCGAATTCACAACAATATGTTTATGATCCAGCCCTGATTGGTGACAAGCCAAAGTGGTATG
 CTCATCAGCTGCAGCCTATCCACTATCGCGTCTATGACAGCAATCCCAGCTGGCTGAGGCCCTGAGTGT
 ACCACCAGAGCGGACTCTGACTCCGAACCTACTGATGATAGTGGCAGTGATAGTATGGATTATGACGAT
 TCAAGCTCTTCTACTCCTCCCTTGGTGACTTTGTGTCAGTGAATGATGAAATGTGACATTAATGGTGATA
 CTCCCAATGTGGACCCTCTGACACATGCAGCACTGGGGGATGCCAGCGAGGTGGAGATTGACGAGCTGCA
 GAATCAGAAGGAAGCAGAAGAGCCTGGCCAGACAGTGAGAATCTCAGGAAAACCCCCACTGCGCTCC
 AGCTCTAGCACCACAGCCAGCAGCAGCCCCAGCACTGTATCCACGGAGCCAACTCTGAACCTGCTGACT
 CTACGGAGATGGATGATAAGGCAGCAGTAGGCGTCTCCAAGCCCCCTCCTTCCGTGCCTCCAGCATTGG
 CAAATCGAACGTGGACAGACGTAGGCAGAAATGGAGAGGGGGCTCAAAGCTGCTGCGGCCAACAGC
 TTGAGACTGGCAAGTACTCAGATGCAGAGTCACTCTCGGGCAAGCTCTCCAACTCCACCGTCTCCA
 ACACCAGCACCAGGGCTTCGGGGGCATCATGTCTTTGCCAGCAGCCTCTATCGGAACCACAGTACCAG
 CTTTCAGTCTTTCAAACCTCACACTGCCACCAAAGGTGCCGAGAGAAGGCCACGCCCTTCCCCAGTCTG
 AAAGTATTTGGGCTAAATACTCTAATGGAGATTGTTACTGAAGCCGGCCCGGGAGTGGTGAAGGAAACA
 GGAGGGCGTTAGTGGATCAGAAGTCATCTGTCTATAAACACAGCCCAACAGTGAAGAGAGAACCTCCATC
 ACCCCAGGGTCGATCCAGCAATTCTAGTGAGAACCAGCAGTTCCTGAAGGAGGTGGTGCACAGCGTGTG
 GACGGCCAGGGAGTTGGCTGGCTCAACATGAAAAGGTGCGCCGGCTGCTGGAGAGCGAGCAGCTGCGAG
 TCTTTGTCTGAGCAAGTGAACCGCATGGTGCAGTCAAGGACGATGCCCGGCAGGACATCATCCCGGA
 TGTGGAGATCAGTCGGAAGGTGTACAAGGAATGTTAGACCTCCTCAAGTGTACAGTCTCAGCTTGGAG
 CAGTCTATGCCACGCGGGTCTGGGTGGCATGGCCAGCATCTTTGGGCTTTTGGAGATTGCCAGACCC
 ACTACTATAGTAAGAACCAGACAAGCGGAAGAGAAGTCCAACAGAAAGTGTAAATACCCAGTGGCAA
 GGATCCTGGCCTAGCTGGGCGGGGGACCCAAAGGCTATGGCACAACTGAGAGTTCCACAACCTGGGACCT
 CGGGCACCAAGTCCACAGGAAAGGTCCTAAGGAACTGGACACCAAGTAAAGGAAGAAAATTTTA
 TAGCATCTATTGGGCTGAAGTAATCAAACCTGTCTTTGACCTTGGTGGAGACAGAGGAGAAAAAGTCCCA
 GATCAGCGCAGACAGTGGTGTGAGCCTGACGTCTAGTCCAGAGGACTGATCAAGACTCTGTATCGGC
 GTGAGTCCAGCTGTTATGATCCGACGTCAAGTCAGGATTCTGAAGTAGCACCGTGGTGGTAAAGTCT
 CTGGAGAGACCTTGGAGCTGACAGTACTTGGCAGCAATGCAGGTGATGGACCAGGTGGCAGGGCAG
 TGTTACCTGGCAAGCTCTCGGGCACTTTGTCTGATAGTGAATGAGACCAACTCTGCCACAAGCACC
 ATCTTTGGTAAAGCCACAGCTTGAAGCCAAGCATAAAGGAGAAGCTGGCAGGCAGCCCCATTTCGTA
 CTGAAAGATGTGAGCCAGCGAGTCTATCTATGAGGGACTCCTAGGCAAAGAGCGTTCTACTTTATGGGA
 CCAATGCAATTCTGGGAAGATGCCTTCTTAGATGCTGTGATGTTGGAGAGAGAAGGGATGGGTATGGAC
 CAGGGTCCCAGGAAATGATCGACAGGTACCTGTCCCTTGGAGAACATGACCCGGAAGCGCCTGGAAGATG
 ATGAAGATCGCTTGTGGCCACACTTCTGCACAACCTCATCTCCTACATGCTGCTGATGAAGGTAATAA
 GAATGACATCCGCAAGAAGGTGAGGCGCCTAATGGGAAAGTGCACATTTGGGCTTGTGTACAGCCAGCAA
 ATCAATGAGGTGCTTGTGATCAGCTGGCGAACCTGAATGGACCGCATCTCTATCTGGTCCAGTGGCAGCC
 GGCACATGAAGAAGCAGACATTTGTGGTACATGCAGGGACAGATACAAACGGAGATATCTTTTTCATGGA
 GGTGTGCGATGACTGTGGTGTTCGTAGTAAACATCGGAACAGTGTATGAGCGTGGTGGTACGAGAAG
 CTCATCAACATGACCTACTGTCCCAAGACGAAGGTGTTGTGCTTGTGGCGTAGAAATGGCTCTGAGACCC
 AGCTCAACAAGTTCTATACTAAAAAGTGTGGGAGCTGTACTACTGTGTGAAGGACAGCATGGAGCGCGC
 TGCCGCCCGACAGCAAAGCATCAAACCCGACCTGAATTGGGTGGCGAGTTCCTGTGCAGGACCTGAAG
 ACTGGTGAAGGTGGCCTGCTGCAGGTGACCCTGGAAGGGATCAACCTCAAATTCATGCACAATCAGGTTT
 TCATAGAGCTGAATCACATTAATAAGTGAATACAGTTCGAGGCGTCTTTGCTCTGGAGGAATTTGTTCC
 TGAAATTAAGAAGTGGTGGCCACAAGTACAAGACCAATGGCCACGAAATCTGCTACTCCGTATTA
 TGTCTCTCTCGTACGTGGCTGCAGTTCATAGCAGTGAGGAAGATCTCAGAACCCCGCCCGGCTGTCT
 CTAGC

AGCGGACCGACGCGTACGCGGCCGCTCGAG - GFP Tag - GTTTAA

Protein Sequence: >RG219174 representing NM_130471
 Red=Cloning site Green=Tags(s)

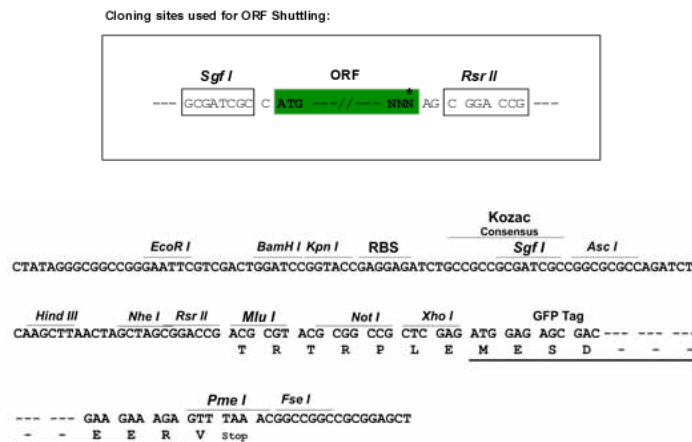
```

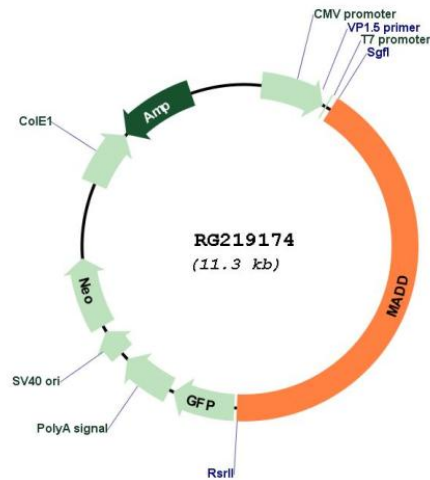
MVQKKKFCPRLLDYLVIIGARHPSSDSVAQTELLRRYPLEDHTEFFLPPDVVFFCQPEGCLSVRQRMS
LRDDTSFVFTLTDKDTGVTRYGICVNFYRSFQKRISKEKGGGAGSRGKEGTHATCASEEGGTESSESGS
SLQPLSADSTPDVNQSPRGKRRKAGSRSRNSTLTSCLVLSHYPPFFSTFRECLYTLKRLVDCSERLLGK
KLGIPRGVQRDTMWRIFTGSLLEVEKSSALLHDLREIEAWIYRLLRSPVPSGQKRVDIEVLPQELQPAL
TFALPDPSPRFTLVDFPLHLPLELLGVDAQLQVLTCLLLEHKVVQLSRDYNALSMSVMAFVAMIYPLEYMF
PVIPLLPCTMASAEQLLLAPTPYIIGVPASFFLYKLDKMPDDVWLVDLDSNRVIAPTNAEVLPIPEPE
SLELKKHLKQALASMSLNTQPIILNLEKFHEGQEIPLLLGRPSNDLQSTPSTEFNLIYGNVDVSDVATR
VAMVRRFNSANLVQGFQMHTRTLRLFPRPVVAFQAGSFLASRPRQTPFAEKLARTQAVEYFGEWILNPTN
YAFQRIHNNMFDPALIGDKPKWYAHQLQPIHYRVYDSNSQLAEALSVPPERDSDEPTDSDSGSDSMDYDD
SSSSYSSLGDFVSEMMKCDINGDTPNVDPLTHAALGDASEVEIDELQNQKEAEEPGPDSSENSQENPLRS
SSSTTASSPSTVIHGANSEPADSTEMDDKAAVGVSKPLPSVPPSIGKSNVDRRQAEIGEGAQKLLRPN
LRLASDSDAESDRASSPNSTVSNSTSTEGFGGIMSFASSLYRNHSTFSLSNLTLPKLGAREKATPFPSL
KVFGLNLTMEIVTEAGPGSGEGNRRLVDQKSSVIKHSPTVKREPPSPQGRSSNSSENQQLKEVHVSVL
DGQGVGWLNMKKVRRLESEQLRVFVLSKLNRMVQSEDDARQDIIPDVEISRKYVYKMLDLLKCTVLSLE
QSYAHAGLGGMASIFGLLEIAQTHYYSKEPDKRKRSPTESVNTVPVKDPLAGRDPKAMAQLRVPQLGP
RAPSATGKGPKELDTRSLKEENFIASIGPEVIKPVFDLGETEEKKSQISADSGVSLTSSSQRTDQDSVIG
VSPAVMIRSSSQDSEVSTVVSNSSETLGDSDLSSNAGDGGPGGEGSVHLASSRGTLSDEIETNSATST
IFGKAHSLKPSIKEKLAGSPIRTSEDVSQRVYLYEGLLGERSTLWDQMFWEDAFDAVMLEREGMGMD
QGPQEMIDRYLSLGEHDRKREDEDRLLATLLHNLISYMLLMKVNKNDIRKKVRRMLMGKSHIGLVYSQQ
INEVLDQLANLNGRDL SIWSSGSRHMKKQTFVHAGDTNGDIFMEVCDDCVVLRSNIGTVYERWYWEK
LINMTCYCPKTKVLCWRNGSETQLNKFYTKKRELYCYCKDSMERAAARQQSIKPGPELGGFFPVQDLK
TGEGLLQVTLEGINLKFMHNQVFIELNHKCCNTVRGVFVLEEFVPEIKEVSSHKYKTPMAHEICYSVL
CLFSYVAAVHSSEEDLRTPPRPVSS
    
```

SGPTRTRRLE - GFP Tag - V

Restriction Sites: SgfI-RsrII

Cloning Scheme:



Plasmid Map:


ACCN: NM_130471

ORF Size: 4695 bp

OTI Disclaimer: The molecular sequence of this clone aligns with the gene accession number as a point of reference only. However, individual transcript sequences of the same gene can differ through naturally occurring variations (e.g. polymorphisms), each with its own valid existence. This clone is substantially in agreement with the reference, but a complete review of all prevailing variants is recommended prior to use. [More info](#)

OTI Annotation: This clone was engineered to express the complete ORF with an expression tag. Expression varies depending on the nature of the gene.

Components: The ORF clone is ion-exchange column purified and shipped in a 2D barcoded Matrix tube containing 10ug of transfection-ready, dried plasmid DNA (reconstitute with 100 ul of water).

Reconstitution Method:

1. Centrifuge at 5,000xg for 5min.
2. Carefully open the tube and add 100ul of sterile water to dissolve the DNA.
3. Close the tube and incubate for 10 minutes at room temperature.
4. Briefly vortex the tube and then do a quick spin (less than 5000xg) to concentrate the liquid at the bottom.
5. Store the suspended plasmid at -20°C. The DNA is stable for at least one year from date of shipping when stored at -20°C.

RefSeq: [NM_130471.2](#), [NP_569827.2](#)

RefSeq Size: 5785 bp

RefSeq ORF: 4698 bp

Locus ID: 8567

UniProt ID: [Q8WXG6](#)

Cytogenetics: 11p11.2

Protein Families: Druggable Genome

Gene Summary: Tumor necrosis factor alpha (TNF-alpha) is a signaling molecule that interacts with one of two receptors on cells targeted for apoptosis. The apoptotic signal is transduced inside these cells by cytoplasmic adaptor proteins. The protein encoded by this gene is a death domain-containing adaptor protein that interacts with the death domain of TNF-alpha receptor 1 to activate mitogen-activated protein kinase (MAPK) and propagate the apoptotic signal. It is membrane-bound and expressed at a higher level in neoplastic cells than in normal cells. Several transcript variants encoding different isoforms have been described for this gene. [provided by RefSeq, Jul 2008]