

Product datasheet for **RG219149**

CFAP92 (NM_020741) Human Tagged ORF Clone

Product data:

Product Type:	Expression Plasmids
Product Name:	CFAP92 (NM_020741) Human Tagged ORF Clone
Tag:	TurboGFP
Symbol:	CFAP92
Synonyms:	FAP92; KIAA1257
Mammalian Cell Selection:	Neomycin
Vector:	pCMV6-AC-GFP (PS100010)
E. coli Selection:	Ampicillin (100 ug/mL)
ORF Nucleotide Sequence:	>RG219149 representing NM_020741 Red=Cloning site Blue=ORF Green=Tags(s)

TTTTGTAATACGACTCACTATAGGGCGGCCGGAATTCGTCGACTGGATCCGGTACCGAGGAGATCTGCC
GCC**CGATCGCC**

ATGTCGCTACATGCCTGGGAGTGGGAAGAGGACCCGCAAGCATAGAGCCCATCTCCTCCATCACTAGCT
TTTACCAGTCCACGAGCGAGTGTGACGTGGAGGAACACCTGAAGGCCAAGGCCAGGGCCAGGAGTCTGA
CTCTGACCGCCCGTGCAGCAGCATCGAGTCTCATCTGAGCCTGCCAGCACTTTCAGCTCCGACGTGCC
CACGTGGTCCCCTGCAAATTCACCATCTCACTGGCCTTCCCTGTGAATATGGGTGAGAAGGGAAAAATG
CAAGTTTGATTGAAAAATAAGAAACACCCCTAAAACAGACAGTCTGTGTTACAAAGATGCGTCGTTTTTA
CCACATTGAGTATTTCTTCTGCCGACGATGAAGAACCCTAAAAAGTTGACATATTGCTATTTCCAATG
GTGGCCAAAGTATTCTGGAGTCAGGAGTAAAGACTGTGAAGCCGTGGCAGGAAGGTGACAAAGCCTGGG
TGTCTGGGAGCAGACTTTAATATCACTGTGACAAAGGAATTATTAAGAAAAATAAATTTCCACAAAAAT
CACCTTGAGGCTCTGGAACACTAAAGACAAGATGTCAAGAAAAGTCAGATATTACCGATTAAGACTGCC
GGCTTCACAGACGACGTGGGAGCTTTTCATAAGTCAGAAGTGAGACATTTGGTTTTAAATCAGAGAAAAAT
TATCTGAACAGGGCATTGAGAATACCAACATTGTGAGAGAAGAGTCGAACCAGGAACATCCGCCAGGAAA
ACAAGAAAAAACAGAAAAACACCCAAAGTCTTTGCAAGTTCTCACCAAGCAGAGCCCGAAACTTCTCC
AAGAACAGTGAGGAATATGAGAAGTCCCTCAAAATGGACGATTCTCCACGATTCATGGAGTGTTCAC
GAACACCAACCTTTCTTTGGCAGGAGCAAGCATGATGGAGATCAAGGAATTAATTGAGAGTGAATCACT
TAGCAGCTTAACAAACATATTAGACAGACAAAGTCTCAAAATTAAGGGAAAGATTGAGAGGGAAGAAGG
AAAATCCAGAGGAGACATAAGAAGCCCCTGGCAGAAAGAGGACAGCCACGCTGACAGGCCCCAGGA
AGCAGAGCGCTTTCTCCATCCAGCTGGCCGTCATGCCGCTCCTTGCCGGTACCCACTGCTTGCCCTGTT
CCAGCAGCTCCTGCTTGTCTGTGGCCAGAACGGCCA

ACGCGTACGCGGCCGCTCGAG - GFP Tag - GTTTAA



[View online »](#)

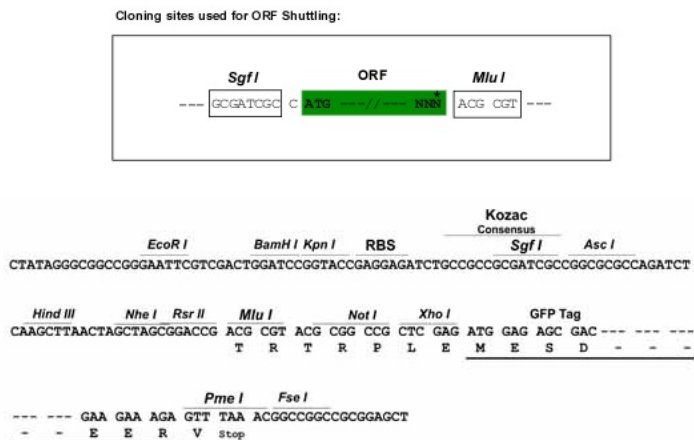
Protein Sequence: >RG219149 representing NM_020741
 Red=Cloning site Green=Tags(s)

MSLHAWEEEDPASIEPISSITSFYQSTSECDVEEHLKAKARAQESDSDRPCSSIESSSEPASTFSSDVP
 HVVPCKFTISLAFPVNMGQKGYASLIEKYKKHPKTDSSVTKMRRFYHIEYFLLPDDEEPPKVDILLFPM
 VAKVFLESGVKTVKPWHEGDKAWVSWEQTFNITVTKELLKINFKITLRLWNTKDKMSRKVRYRRLKTA
 GF TDDVGAFAHKSEVRHLVLNQRKLESEQGIENTNIVREESNQEHPGKQEKTEKHPKSLQGS HQAEPETSS
 KNSEYEKSLKMDDSSTIQWSVSRPTIISLAGASMMIEIKELIESESLSSLTNILDRQRSQIKGKDSEGRR
 KIQRHKKPLAEEEEADPTLTGPRKQSAFSIQLAVMPLLAGTHCLPCSQQLLLVLPERP

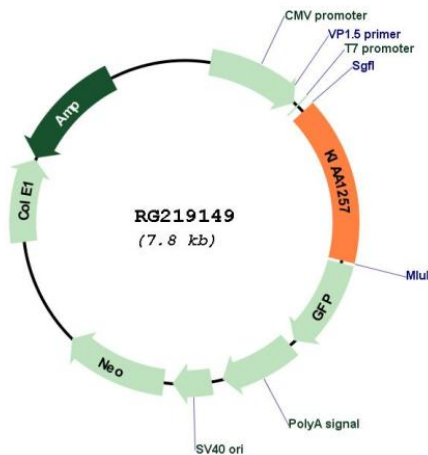
TRTRPLE - GFP Tag - V

Restriction Sites: SgfI-MluI

Cloning Scheme:



Plasmid Map:



ACCN: NM_020741

ORF Size:	1227 bp
OTI Disclaimer:	The molecular sequence of this clone aligns with the gene accession number as a point of reference only. However, individual transcript sequences of the same gene can differ through naturally occurring variations (e.g. polymorphisms), each with its own valid existence. This clone is substantially in agreement with the reference, but a complete review of all prevailing variants is recommended prior to use. More info
OTI Annotation:	This clone was engineered to express the complete ORF with an expression tag. Expression varies depending on the nature of the gene.
Components:	The ORF clone is ion-exchange column purified and shipped in a 2D barcoded Matrix tube containing 10ug of transfection-ready, dried plasmid DNA (reconstitute with 100 ul of water).
Reconstitution Method:	<ol style="list-style-type: none">1. Centrifuge at 5,000xg for 5min.2. Carefully open the tube and add 100ul of sterile water to dissolve the DNA.3. Close the tube and incubate for 10 minutes at room temperature.4. Briefly vortex the tube and then do a quick spin (less than 5000xg) to concentrate the liquid at the bottom.5. Store the suspended plasmid at -20°C. The DNA is stable for at least one year from date of shipping when stored at -20°C.
RefSeq:	NM_020741.3
RefSeq Size:	1746 bp
RefSeq ORF:	1230 bp
Locus ID:	57501
UniProt ID:	Q9ULG3
Cytogenetics:	3q21.3