

## Product datasheet for **RG219120**

### USP40 (NM\_018218) Human Tagged ORF Clone

#### Product data:

Product Type:	Expression Plasmids
Product Name:	USP40 (NM_018218) Human Tagged ORF Clone
Tag:	TurboGFP
Symbol:	USP40
Mammalian Cell Selection:	Neomycin
Vector:	pCMV6-AC-GFP (PS100010)
E. coli Selection:	Ampicillin (100 ug/mL)
ORF Nucleotide Sequence:	>RG219120 representing NM_018218 Red=Cloning site Blue=ORF Green=Tags(s)

TTTTGTAATACGACTCACTATAGGGCGGCCGGGAATTCGTCGACTGGATCCGGTACCGAGGAGATCTGCC  
GCC**CGATCGCC**

ATGTCACCTTTTTTAAGGGTAGTATTTAGTTTCACAATGTTTGGGGACCTGTTTGAAGAGGAGTATTCCA  
CTGTGTCTAATAATCAGTATGGAAAAGGGAAGAAATTAAGACTAAAGCTTTGGAGCCACCTGCTCCTAG  
AGAATTCACCAATTTAAGCGGAATCAGAAATCAGGGTGGAACTGTTACCTCAATTCCTTCTTCAGACT  
CTTCATTTACACCTGAATTCAGAGAAGCTCTATTTCTCTTGGCCCAGAAGAGCTTGGTTTGTGAAG  
ATAAGGATAAACCCGATGCAAAGGTTTCAATCATCCCTTTACAGTTACAGCGCTTGTTCAGCTTCT  
GCTCTTAGACCAGGAAGCTGCATCCACAGCAGACCTCACTGACAGCTTTGGGTGGACCAGTAATGAGGAA  
ATGAGGCAACATGATGTGCAGGAAGTGAATCGAATCCTCTTCAGCGCTTTGGAACTTCTTTAGTTGGGA  
CCTCCGGTCATGACCTCATCTATCGTCTGTACCATGGAACCATTTGTTAACAGATTGTTTGTAAAGAATG  
TAAGAAGTTAGCGAGAGGCAGGAAGACTTCTTAGATCTAACAGTAGCAGTCAAAAATGTATCCGGTTTG  
GAAGATGCTCTGGAACATGTATGTAGAAGAGGAAGTTTTGATTGTGACAACCTGTACCACTGTGGAA  
CTTGTGACAGGCTGGTTAAAGCAGCAAAGTCGGCCAAATTACGTAAGCTGCCTCTTTTCTACTGTTTC  
ATTACTAAGATTTAATTTTGTGAAATGCGAACGCTACAAGGAACTAGCTGTTATACATCCCT  
CTCCGGATTAATCTCAAGCCCTTTGTGAACAGAGTGAATTGGATGACTTAGAATATATATGACCTCT  
TCTCAGTTATTATACACAAAGGTGGCTGCTACGGAGGCCATTACCATGTATATATTAAGATGTTGATCA  
TTTGGGAACTGGCAGTTTCAAGAGGAAAAAGTAAACCAGATGTGAATCTGAAAGATCTCCAGAGTGAA  
GAAGAGATTGATCATCCACTGATGATTCTAAAAGCAATCTTATTAGAGGAGAATAATCTAATTCCTGTTG  
ATCAGCTGGGCCAGAACTTTTGAAGAAAGTAGGAATATCTTGGAAACAAGAAGTACAGAAAAACAGCATGG  
ACCATTGCGGAAGTTCTTACAGCTCCATTCTCAGATATTTCTACTCAGTTCAGATGAAAGTACAGTTCGT  
CTCTTGAAGAATAGTTCTCTCCAGGCTGAGTCTGATTTCCAAAGGAATGACCAGCAAATTTCAAGATGC  
TTCTCCAGAATCCCCAGGTTTAAACAATAGCATCTCCTGTCCCCACTGGTTTGATATAAATGATTCTAA  
AGTCCAGCAATCAGGGAAAAGGATTTGAACAGCAATTTCAAGGTAAGAAAGTGCCTACATGTTGTTT  
TATCGGAAATCCCAGTTGCAGAGACCCCTGAAGCTCGAGCTAATCCAAGATATGGGGTTCCATGTCTAT  
TACTGAATGAAATGGATGCAGCTAACATTGAACTGCAAACCAAAAAGGCGAGAATGTGATTCTGCAAACAA



[View online »](#)

TACTTTTGAATTGCATCTTCACCTGGGCCCTCAGTATCATTTTCTCAATGGGGCTCTGCACCCAGTAGTC  
TCTCAAACAGAAAGCGTGTGGGATTTGACCTTTGATAAAAAGAAAACTTTAGGAGATCTCCGGCAGTCAA  
TATTTTCAGCTGTTAGAATTTTGGGAAGGAGACATGGTTCTTAGTGTTGCAAAGCTTGACCAGCAGGACT  
TCACATTTACCAGTCACTTGGCGGGGATGAACTGACACTGTGTGAAACTGAAATTGCTGATGGGGAAGAC  
ATCTTTGTGTGGAATGGGGTGGAGTTGGTGGAGTCCACATTCAACTGGTATTGACTGCGAACCTCTAC  
TTTTAAATGTTCTTCATCTAGACACAAGCAGTGATGGAGAAAAGTGTTCAGGTGATAGAATCTCCACA  
TGTCTTTCCAGCTAATGCAGAAGTGGCCTGTCTCACAGCCTTAGCAATCCCAGCAGGTGTCATCTTC  
ATCAACAGTGCTGGATGTCCAGGTGGGGAGGGTTGGACGGCCATCCCCAAGGAAGACATGAGGAAGACGT  
TCAGGGAGCAAGGGCTCAGAAATGGAAGCTCAATTTTAATTCAGGATTCTCATGATGATAACAGCTTGT  
GACCAAGGAAGAGAAATGGGTCAGTATGAATGAGATTGACTGGCTCCACGTTAAAAATTTATGCCAG  
TTAGAATCTGAAGAGAAGCAAGTAAAAATACAGCAACTGTTAACACAATGGTGTGTTGATTCGAATTA  
AAGCCATAAAGGAATTAATAATGAAGGAAGTACTGACAACAGCTGTTTGGACCTATTGATAGAAA  
TGGGAAGCTTCTTTGTCCAGTCCCGACAGCTATACTTTGAAGGAAGCAGAATTGAAGATGGGAAGTTCA  
TTGGGACTGTGTCTTGGAAAAGCACCAAGTTCGTCTCAGTTGTTCTGTTTTTTGCAATGGGGAGTGACG  
TTCAACCTGGGACAGAAATGAAATCGTAGTAGAAGAAACAATATCTGTGAGAGATTGTTTAAAGTTAAT  
GCTGAAGAAATCTGGCCTACAAGGAGATGCCTGGCATTACGAAAAATGGATTGGTGCTATGAAGCTGGA  
GAGCCTTTATGTGAAGAAGATGCAACACTGAAAGAACTTCTGATATGTTCTGGAGATACTTTGCTTTTAA  
TTGAAGGACAACCTCCTCCTCTGGGTTTCTGAAGGTGCCCATCTGGTGGTACCAGCTTCAGGGTCCCTC  
AGGACTGGGAGAGTCAATCAGGACCAGACCAACTGTACTTCGTCTTGGGGCAGAGTTTGGAGAGCCACT  
TCCAGCCAAGGTGCTTCTGGGAACGAGCCTGCGCAAGTTTCTCTCCTCTACTTGGGAGACATAGAGATCT  
CAGAAGATGCCACGCTGGCGGAGCTGAAGTCTCAGGCCATGACCTTGCCCTCTTCTGGAGTTCGGTGT  
CCCGTCCCAGCCACCTCAGAGCCTGGACGGTGGAGAGGAAGCGCCAGGCAGGCTTTTACGAACCTGAC  
CGGACGCCACTCAGGGAATATAAACTAGGACGGAGAATTGAGATCTGCTTAGAGCCCTTCAGAAAGGCG  
AAAACCTGGGCCCCAGGACGTGCTGCTGAGGACACAGGTGCGCATCCCTGGTGAGAGGACCTATGCCCC  
TGCCCTGGACCTGGTGTGGAACGCGGCCAGGGTGGGACTGCCGGCTCCCTGAGGCAGAGAGTTGCCGAT  
TTCTATCGTCTTCCCGTGGAGAAGATTGAAATTGCCAAATACTTTCCCGAAAAGTTCGAGTGGCTCCGA  
TATCTAGCTGGAACCAACAAATAACCAAGAGGAAAAAGAAAAAACAAGATTATTTGCAAGGGGCACC  
GTATTACTTGAAGACGGAGATACTATTGGTGTAAAGAATCTCCTGATTGACGACGATGATGATTCAGT  
ACAATCAGAGATGACACTGGAAGAAAAGCAGAAACAACGGGCCCTGGGAGAAAGGAAAAGCCAAGAAG  
CCCTCCATGAGCAGAGCAGCTACATCCTCTCCAGTGCAGAGACGCTGCCGGCCCCGAGCCCCGAAAC  
TTCTCTCCATCCAGTGGGGAGCTTCAGA

ACGCGTACGCGGCCGCTCGAG - GFP Tag - GTTTAA

**Protein Sequence:** >RG219120 representing NM\_018218  
 Red=Cloning site Green=Tags(s)

```

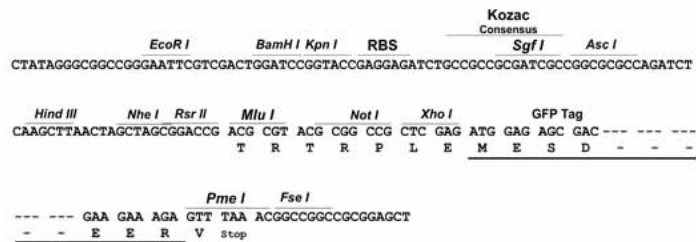
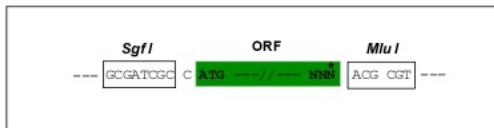
MSLFLRVVFSFTMFGDLFEEYSTVSNNQYGGKGLKTKALEPPAPREFTNL SGIRNQGGTCYLNSLLQT
LHFTPEFREALFSLGPEELGLFEDKDKPDAKVRIIPLQLQRLFAQLLLLDQEAASTADL TDSFGWTSNEE
MRQHDVQELNRIILFSALETSLVGTS GHDLIYRL YHGTIVNQIVCKECKNVSERQEDFLDL TVAVKNVSGL
EDALWNMYVEEVEVFDCDNL YHCGTCDRL VKAAKS AKLRKLP PFL TVSLLRFNDFV KCCERYKETS CYTFP
LRINLKPFC EQSELDDLEYIYDLF SVIIHKGGCYGGHYHYIKD VDH LGNWQFQEEKSKPDVNLKDLQSE
EEIDHPLMILKAILLEENNLIPVDQLGQKLLKKIGISWNKKYRKQHGPLRKFQLHSQIFLLSSDESTVR
LLKNSSLQAESDFQRNDQQIFKMLPPESPGLNNSISCPHWFDINDSKVQPIREKDIEQQFQKESAYMLF
YRKSQ LQRPEARANPRYGVPC HLLNEMDAANIELQTKRAECDSANNTFELHLHLGPQYHFFNGALHPVV
SQTESVWDLTFDKRKTLDLRSIFQLLEFWEGDMVL SVAKLVPAGLHIYQSLGGDELTLCETEIADGED
IFVWNGVEVGGVHIQTGIDCEPLLLNLVHLD TSSDGEKCCQVIESPHVFPANA EVGTVL TALAIPAGVIF
INSAGCPGGEGWTAIPKEDMRKTFREQGLRNGSSILIQD SHDDNSLLTKEEKWVTSMNEIDWLHVKNLCQ
LESEEKQVKISATVNTMVFDIRIKAIKELKLMKELADNSCLRPIDRNGKLLCPVPD SYTLKEAELKMSS
LGLCLGKAPSSSQLFLFFAMGSDVQPGTEMEIVVEETISVRDCLKMLKKSGLQGD AWHLRKMDWCYEAG
EPLCEEDATLKELLICSGDTLLLI EGQLPPLGFLKVP IWWYQLQGPSGHWESHQDQTNCTSSWGRVWRAT
SSQGASGNEPAQVSLLYLGDIEI SEDATLAE LKSQAMTLP PFLFEGVPSPAHLRAWTVERKRPGRLLRTD
RQPLREYKLGRRIEICLEPLQKGENLGPQDVLLR TQVRIPGERTYAPALDLVWNAAQGGTAGSLRQRVAD
FYRLPVEKIEIAKYFPEKFEWLP ISSWNQQITKRKKKKKQDY LQGAPYYLKG DGTIGVKNLLIDDDDDFS
TIRDDTGKEKQKQRALGRRKSQEALHEQSSYILSSAETPARPRAPETSLSIHVGSFR
  
```

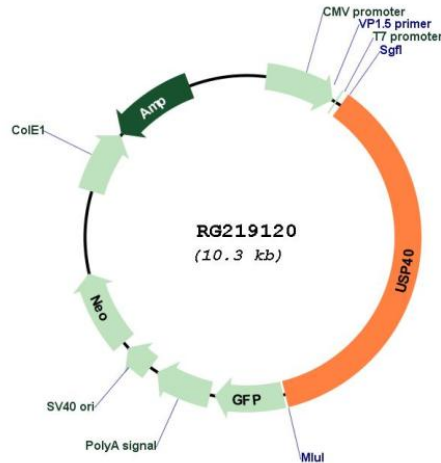
TRTRPLE - GFP Tag - V

**Restriction Sites:** SgfI-MluI

**Cloning Scheme:**

Cloning sites used for ORF Shutting:



**Plasmid Map:**


**ACCN:** NM\_018218

**ORF Size:** 3741 bp

**OTI Disclaimer:** The molecular sequence of this clone aligns with the gene accession number as a point of reference only. However, individual transcript sequences of the same gene can differ through naturally occurring variations (e.g. polymorphisms), each with its own valid existence. This clone is substantially in agreement with the reference, but a complete review of all prevailing variants is recommended prior to use. [More info](#)

**OTI Annotation:** This clone was engineered to express the complete ORF with an expression tag. Expression varies depending on the nature of the gene.

**Components:** The ORF clone is ion-exchange column purified and shipped in a 2D barcoded Matrix tube containing 10ug of transfection-ready, dried plasmid DNA (reconstitute with 100 ul of water).

**Reconstitution Method:**

1. Centrifuge at 5,000xg for 5min.
2. Carefully open the tube and add 100ul of sterile water to dissolve the DNA.
3. Close the tube and incubate for 10 minutes at room temperature.
4. Briefly vortex the tube and then do a quick spin (less than 5000xg) to concentrate the liquid at the bottom.
5. Store the suspended plasmid at -20°C. The DNA is stable for at least one year from date of shipping when stored at -20°C.

**RefSeq:** [NM\\_018218.1](#), [NP\\_060688.1](#)

**RefSeq Size:** 3744 bp

**RefSeq ORF:** 3708 bp

**Locus ID:** 55230

**UniProt ID:** [Q9NVE5](#)

**Cytogenetics:** 2q37.1

**Protein Families:** Protease

**Gene Summary:** Modification of cellular proteins by ubiquitin is an essential regulatory mechanism controlled by the coordinated action of multiple ubiquitin-conjugating and deubiquitinating enzymes. USP40 belongs to a large family of cysteine proteases that function as deubiquitinating enzymes (Quesada et al., 2004 [PubMed 14715245]).[supplied by OMIM, Mar 2008]