

## Product datasheet for **RG219098**

### MAST3 (NM\_015016) Human Tagged ORF Clone

#### Product data:

Product Type:	Expression Plasmids
Product Name:	MAST3 (NM_015016) Human Tagged ORF Clone
Tag:	TurboGFP
Symbol:	MAST3
Mammalian Cell Selection:	Neomycin
Vector:	pCMV6-AC-GFP (PS100010)
E. coli Selection:	Ampicillin (100 ug/mL)
ORF Nucleotide Sequence:	>RG219098 representing NM_015016 Red=Cloning site Blue=ORF Green=Tags(s)

TTTTGTAATACGACTCACTATAGGGCGGCCGGGAATTCGTCGACTGGATCCGGTACCGAGGAGATCTGCC  
GCC**CGATCGCC**

ATGGACGAGTCGAGCCTCCTGCGGCGCCGCGGGCTCCAGAAGGAGCTGAGCCTGCCACGCCGAGGACGTG  
GCTGCCGAGCGGGAACCGCAAGAGCTTGGTGGTAGGAACGCCCTCCCCGACCCTCTCCCGCCCTGTG  
GCCATTGTCGGTCCCAACGGCAGGCAGCAGCCCTTGGATAGTCTCGGAATTTCTCGGCTGCCTTGCC  
CTAAATTTCCCTTTGCCCGAGGGCAGACGGCAGAAGATGGTCCCTCGGTCTCTCCATCTTCCGGT  
ATGGAACCAACACACCCAGCTCCACCTCTCGTCAAGCTCATCTCCCGGGAACGTCTCCACCGATTCC  
CTTCCAGCCGACGCCGACGAGCTGCACCTTCTGTCCAAGCACTTCCGACGCTCAGAGAATGTGCTTGT  
GAGGAAGGCGCCGGTCAACCCGCTCCGACCCGCTCTCGCAGTCTCAGCCCGGCCGTGCAACGGGGA  
CCTTCGACAATGAGATTGTATGATGAATCACGTGTACCGGAGAGGTTCCCAAGGCCACAGCACAGAT  
GGAGGGCCGTCTGCAGGAGTTCTGACGGCCTACGCGCCGCGCCGGCTGGCGCTGGCTGATGGCGTC  
TTGGGCTTCATCCACCACAGATCGTCGAGCTGGCCGAGACTGCTTGGCCAAGTCTGGCGAGAACCTCG  
TCACCTCCGCTACTTCTAGAGATGCAGGAGAAGCTGGAGCGGCTTCTGCAGGATGCCATGAGCGTTC  
GGACAGTGAAGGTCAGCTTCATCGTCCAGCTTGTCCGAAACTGCTGATCATCATCTCACGGCCAGCT  
CGGCTGCTGGAGTGTCTGGAGTTTGACCCTGAGGAATTTACCACCTGCTGGAGGCGGCTGAGGGCCATG  
CGCGGGAGGGCCAAGGCATTAAGACTGACCTTCCACAGTACATCATTGGGAGCTGGGCCTGGCCAAGGA  
CCCCCTGGAGGAGATGGTGCCACTGAGTCACCTCGAAGAAGAACAGCCCCCAGCACCTGAGTCCCCAGAG  
AGCCGCGCCCTGGTGGCCAGTACGGAGGAAGCCATGCGAAAGCGACTTTGAGACCATCAAACCTATTA  
GCAACGGAGCCTATGGGGCCGTCTACCTGGTGGCCACCGTGACACACGGCAGCGCTTTGCCATCAAGAA  
GATCAACAACAGAACTGATCTGCGTAACAGATCCAGCAGGCTTTGTGGAGCGTGACATTCTCACC  
TTTGCCGAGAACCCTTTGTGGTCAGCATGTTCTGCTCCTTTGAGACCCGGCCACCTATGATGGTCA  
TGAATACGTGGAAGGCGGCGACTGCGCCACGCTCCTGAAGAACATGGGCCCGCTGCCCGTGACATGGC  
CCGCTGTACTTCGCCGAGACGGTGTGGCGCTGGAGTACCTGCATAACTATGGCATCGTGCACCCGTGAC  
CTCAAACAGACAATCTGCTCATCACCTCGCTTGGCCACATCAAGCTCACGGACTTCGGCCCTGTCCAAGA  
TCGGCCTCATGAGCATGGCCACCAACCTCTATGAGGGCCACATCGAGAAGGACGCCCGAGAGTTCATCGA



[View online »](#)

CAAGCAGGTGTGTGGGACGCCGGAGTACATAGCCCCGAGGTGATCTTCCGCCAGGGCTATGGGAAGCCA  
GTGGACTGGTGGGCCATGGGCGTCGTCCTATGAGTTTCTGGTGGGCTGCGTGCCTTTCTTTGGAGATA  
CCCCGAGGAAGCTTTCGGTCAGGTGGTCAGCGATGAGATCATGTGGCCAGAGGGAGATGAGGCCCTTC  
AGCAGACGCCAGGACCTCATCACCAGGTTGCTCCGGCAGAGCCCGTGGACCGTCTGGGCACTGGTGGC  
ACCCACGAAGTGAAGCAGCACCCCTTTTCTGGCCCTGGACTGGGCAGGGCTTCTCCGACACAAAGCCG  
AGTTCGTGCCCGAGCTCGAAGCTGAGGATGATACCAGCTACTTTGACACACGTTCCGAACGTTACCGCCA  
TCTGGGCTCCGAGGACGACGAGACCAATGATGAAGAATCGTCCACAGAGATCCCCAGTTCTCCTCTGTC  
TCCCACCGGTTACGAAGGTCTACAGCAGCTCTGAGTTCTGGCCGTCCAGCCCACTCCTACCTTCGCTG  
AAAGGAGCTTCAGTGAAGACCGGAGGAGGGTGGGAGCGCAGCGAAGTGGACTATGGCCCGCGGTGAG  
TGCTGACATCCGGCTGAGGTCTGGACATCCTCTGGATCCTCTGTGAGTCACTTTCGTCAGTCACTTTCGTC  
CGGGTCCAGCCATCTCTCTGAATACCATCAGCCTGGACACAATGCCAAGTTTGCCTTCTCATCAG  
AGGATGAGGGGTAGGCCAGGCCCTGCAGGCCCAAGAGGCCGTCTTATTCTAGGGAGCCTGACCC  
CCCACAGCGCCACCCAGTGTGCCAAGCCCTCGAGCCTTTCTGCCGACACAGCTGCTCTAGCCAC  
GCCCGCTACGGAGCAATAGCATCGGCGCCGACACTCCACCAAGGCCCTTGGATGCCGGCCGGGGCC  
GCCGCTTGGGGCCCAAGAGACCCAGCCCTGAGAAGTCCAGAGCCTCCTCCAGCGGTGGCAGTGGTGG  
CGGCAGTGGGGCCGCGTGCCTAAGTACGCTCTGTCTGCCCCTCATCATCACGGCAGATGAT  
GGCAGCGCGGCCCTCATGAGCCCCCTTCCCGCGCTCTCTGTCTCGAACCCTGCTCCCGTACT  
CTTCGCCGAGCCGAGACCCGTCCCCGTGTGTGGCAGCCTGCGGCCCCCATCGTTATCCACAGCTGTGG  
CAAGAAGTACGGCTTCAGCCTGCGGGGATCCGCGTCTACATGGGTGATAGCGACGTCTACACTGTGCAC  
CACGTCGTCTGGAGTGTGGAGGACGGAAGCCCCAGGAGGGCCCTGCGGGCTGGGGACCTCATCA  
CCCACATCAACGGGGAGTCAAGTGTGGGCTGGTGCACATGGACGTCGTGGAGTGTCTGCTGAAGAGCGG  
CAACAAGATATCCCTGCGGACCACAGCCCTGGAGAACACCTCCATCAAGGTGGGCCCGCCGGAAGAAT  
GTGGCCAAGGGCCGATGGCACGACGAGCAAGAGGAGCCGTGCGGGGAGACCCAGGATCGGCGGAAGT  
CACTTTTCAAGAAGATCTCCAAGCAGACCTCCGTGCTGCACACCAGCCGAGCTTCTCCTCGGACTCCA  
CCTACTACTGTATCCAGTGAAGCCTCCCGGCTCGCCACCCACAGCCTTCCCCAGCCCCACCACT  
CCCTGCCAAGCCAGCCCTGATGTCCAGCAGATACCACTGCATCCCCACCCAGCGCATCCCCGAGCT  
CCAGCAGCCCCGCTCCCCAGTGTCTGGCCACACCCGCCCCAGCTCCCTGCACGGCCTGGTGCCAA  
GCTTGGGCCACCCGCCCCAAGACTGGCCGCCGAAGTCCACCAGCAGCATCCCGCCTCCCCGCTGGCC  
TGCCCGCCATCTCCGCGCCCCACCCGCTCGCCCTCGCCCTGCCGGGACCCGCCCCGACCTGCC  
GATCCCCGCGGTGCGCCGGGGCAGTCAAGTGGGCACAGGGGAGCGGCTGGATGGGGAGGC  
GGGGCGGCGCACTCGTGGCCAGAGGCCGAGCTCGTGGTATGCGGCGGCTGCACCTGTCCGAGCGCCGA  
GACTCCTTCAAGAAGCAGGAGCCGTGCAGGAGTTAGCTTCGATGAGCCGACGAGGAGGCCACTGGGC  
TGCCACCTCAGTGCCACAGATCGCCGTGGAGGGCGAGGAAGCCGTGCCAGTAGCTCTCGGGCCACCGG  
AAGAGAC

ACGCGTACGCGGCCGCTCGAG - GFP Tag - GTTAA

**Protein Sequence:** >RG219098 representing NM\_015016  
 Red=Cloning site Green=Tags(s)

```

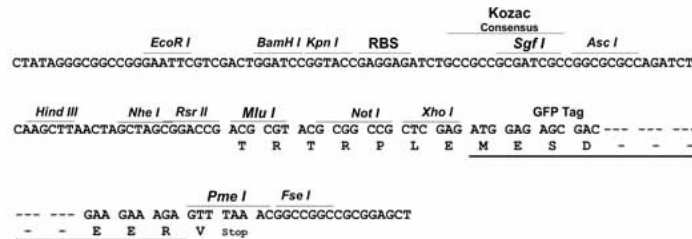
MDESSLRRRGLQKELSLPRRGRGCRSGNRKSLVVGTPSPTLSRPLSPLSVPTAGSSPLDSPRNFAASA
LNFPFARRADGRRWSLALPSSGYGTNTPSSTLSSSSSRERLHQLPFQPTDELHFLSKHFRSSENVLD
EEGGRSPRLRPRSRLSPGRATGTFDNEIVMMNHVYRERFPKATAQMEGRLQEFLTAYAPGARLALADGV
LGFIIHQIIVELARDCLAKSGENLVTSRYFLEMQEKLERLLQDAHERSDSEEVSFIVQLVRKLLIIISPA
RLLECLEFDPEEFYHLLAAEGHAREGQGIKTDLPQYIIGQLGLAKDPLEEMVPLSHLEEEQPPAPESPE
SRALVGQSRKPCESDFETIKLISNGAYGAVYLVRHRDTRQRFQAIKKINKQNLILRNQIQQVFVERDILT
FAENPFVYSMFCSFETRRLCMVMEYVEGGDCATLLKNMGPLPVDMARLYFAETVLALEYLHNYGIVHRD
LKPNDLLITSLGHIKLTDGLSKIGLMSMATNLYEGHIEKDAREFIDKQVCGTPEYIAPEVIFRQGYGKP
VDWWMAMGVVLYEFLVGCVPFFGDTPEELFGQVVSDEIMWPEGDEALPADAQDLITRLLRQSPDLRGTGG
THEVKQHPFFLALDWAGLLRHKAIEFVQLEAEDDTSYFDTRSERYRHLGSEDETNDEESSTEIPQFSSC
SHRFKVVYSSSEFLAVQPTPTFAERSFSEDREEGWERSEVDYGRRLSADIRLSWTSSGSSCQSSSSQPE
RGPSPSLLNTISLDTMPKFASFSEDEGVGPGPAGPKRPVIFLGEPPPPAATPVMPKPSLSDTAALSH
ARLRSNSIGARHSTPRPLDAGRRLGGPRDPAPEKSRASSSGSGGGSGGRVPKSASVSALSLIITADD
GSGGPLMSPLSPRSLSSNPSSRDSSPSRDPSPVCGSLRPPIVIHSSGKKYGFSLRRAIRVYMGSDVYTVH
HYVWSVEDGSPAQEAAGLRAGDLITHINGESVLGLVHMDVVELLLKSGNKISLRTTALENTSIKVGPARKN
VAKGRMARRSKRSRRRETQDRRSLFKKISKQTSVLHTSRFSGLHHSLSSESLEPGSPHSLSPSPTT
PCRSPADVPADTTASPPSASPSSSPASPAAGHTRPSSLHGLAAKLGPPRPKTGRRKSTSSIPPSPLA
CPPISAPPPRSPSPLPGHPPAPARSPRLRRGQSADKLGTERLDGEAGRRTRGPEAELVVMRRLHLSERR
DSFKKQEAUVQEVSFDEPQEEATGLPTSVPQIAVEGEEAVPVALGPTGRD
  
```

TRTRPLE - GFP Tag - V

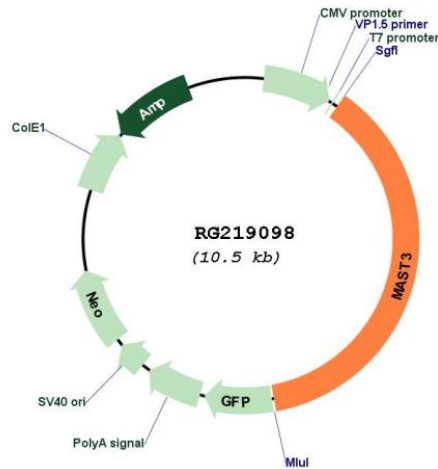
**Restriction Sites:** SgfI-MluI

**Cloning Scheme:**

Cloning sites used for ORF Shutting:



## Plasmid Map:



ACCN: NM\_015016

ORF Size: 3927 bp

**OTI Disclaimer:** Due to the inherent nature of this plasmid, standard methods to replicate additional amounts of DNA in *E. coli* are highly likely to result in mutations and/or rearrangements. Therefore, OriGene does not guarantee the capability to replicate this plasmid DNA. Additional amounts of DNA can be purchased from OriGene with batch-specific, full-sequence verification at a reduced cost. Please contact our customer care team at [custsupport@origene.com](mailto:custsupport@origene.com) or by calling 301.340.3188 option 3 for pricing and delivery.

The molecular sequence of this clone aligns with the gene accession number as a point of reference only. However, individual transcript sequences of the same gene can differ through naturally occurring variations (e.g. polymorphisms), each with its own valid existence. This clone is substantially in agreement with the reference, but a complete review of all prevailing variants is recommended prior to use. [More info](#)

**OTI Annotation:** This clone was engineered to express the complete ORF with an expression tag. Expression varies depending on the nature of the gene.

**Components:** The ORF clone is ion-exchange column purified and shipped in a 2D barcoded Matrix tube containing 10ug of transfection-ready, dried plasmid DNA (reconstitute with 100 ul of water).

**Reconstitution Method:**

1. Centrifuge at 5,000xg for 5min.
2. Carefully open the tube and add 100ul of sterile water to dissolve the DNA.
3. Close the tube and incubate for 10 minutes at room temperature.
4. Briefly vortex the tube and then do a quick spin (less than 5000xg) to concentrate the liquid at the bottom.
5. Store the suspended plasmid at -20°C. The DNA is stable for at least one year from date of shipping when stored at -20°C.

RefSeq: [NM\\_015016.2](#)  
RefSeq Size: 5893 bp  
RefSeq ORF: 3930 bp  
Locus ID: 23031  
UniProt ID: [O60307](#)  
Cytogenetics: 19p13.11  
Protein Families: Druggable Genome, Protein Kinase