

Product datasheet for **RG219089**

JIP2 (MAPK8IP2) (NM_016431) Human Tagged ORF Clone

Product data:

Product Type:	Expression Plasmids
Product Name:	JIP2 (MAPK8IP2) (NM_016431) Human Tagged ORF Clone
Tag:	TurboGFP
Symbol:	MAPK8IP2
Synonyms:	IB2; JIP2; PRKM8IPL
Mammalian Cell Selection:	Neomycin
Vector:	pCMV6-AC-GFP (PS100010)
E. coli Selection:	Ampicillin (100 ug/mL)



[View online »](#)

ORF Nucleotide Sequence:

>RG219089 representing NM_016431
 Red=Cloning site Blue=ORF Green=Tags(s)

TTTTGTAATACGACTCACTATAGGGCGGCCGGGAATTCGTCGACTGGATCCGGTACCGAGGAGATCTGCC
 GCC**CGGATCGCC**

ATGCTCCCGATTTCCTTCTCCTAGCACCTGGGCCCTGGGCTACTGCTGCCCTTGCCACGCCCTGC
 TATCTCCCTCCGTCCTGCAGGACAGCCTCTCCCTGGGGCGCTCGAGCAGCCGCACCCCATCTGCTCCTT
 CCAGGATGACTTCCAGGATTTGAGATGATCGATGACAATGAAGAGGAGGACGATGAGGACGAGGAAGAG
 GAGGAGGAGGAGGAGGGAGATGGGAAGGCCAGGAGGGAGGAGACCCTGGCTCAGAGGCACCTGCC
 CCGGGCCCTTATCCCTCCCTTCCGTGGAGGAGCCCAACAAGCACCGGCCACCACCCTCCGTCTGAC
 CAACTGGGGGCCAGGACTCCCTAAACAACAACGGAGGCTTTGACTGGTGCCTCCGGCTCCTGGCAG
 GAGACAGCGCTATGCTACCCGCCCGGAGGCCCTCAGAGAGCTCCCGGGCCCTCCCTGCCACGGACA
 CCGGGCCCGGGGCGCAGTCGCCAGTCGCCCGGGTTGCGACTGCGAAGGGAACCGGCCTGCGGAACC
 CCCTGCGCCAGGGGGACTTCGCCCTCCTCAGATCCCGGCATCGAGGCTGACCTGAGAAGCCGCTCGAGC
 GCGGGCCCGGGGACGTGCGCAGCAGCCAGGAGCTGTCTCGCCCGGCTCCGACTCGGAGGACGCGGGCG
 GCGCGCGCTGGGGCGCATGATCTCGTCCATCTCGGAGACGGAGCTGGAGCTGAGCAGCGATGGCGGAAG
 CAGCAGCAGCGCGCTCCTCGCACCTACCAACTCCATCGAGGAGGCCCTCGTCGCCCGCTCGGAGCCG
 GAGCCCCCGCGCAACCCCGCGCCCGCCGCCTTCTGCCCGTGGGCCCGACGACACCAACAGCGAGT
 ACGAGTCGGGGTCGGAGTCGGAGCCGACTCAGCAGGACGCGGACTCGCCCTGGCTGCTCAGCAACCT
 GGTGAGCCGATGATCTCCGAGGGCTCCTCGCCATCCGCTGCCCGGCCAGTGCCTGTCTCCTGCGCCG
 CGCCCGCCCGGGAGCCCGTGTGCGCGCCCGGGGGCCCGCCAGGACTCCAGGACCCCGAGCCGGCCG
 CGGGCCCGGGCGGTGGAGCTGGTGGACATGGAGACGCTGTGCGCGCCCGCCCGCCCGCCCGCCG
 GCCTCGACCCGGCCCGCGCAGCCCGGCCCTGCCTATTCTCAGCAACCCACGCGTGACACCATCACG
 CCGCTGTGGGCCGCGCCCGCCGCGCCCGCCCGGGACGAGCCTGCTCCGCGCCTGCTCCGAGGAGG
 AGGACGAAGAGGACGACGAGGAAGAGGAGGATGCCGAGGACAGTGGGGGTCCCCGGGGCAGGGGCAC
 GGGCCCTCGGCGCCGCGGACGCGTGGTGTACGACGCGGTCAAGTACACGCTGGTGGTGGATGAG
 CACACGACGCTGGAGCTGGTGGCTGCGGCGCTGTGCTGGGCTGGGCCACGACGGAAGAGGACAGCG
 GCGGGGAGGCCAGCGAGGAGGAGCGGGCGCGCGCTGCTAGGCGCGGTGAGTCTCGGGGACACCTC
 GCCGACAGCCCTGACCTCACTTCTCCAAGAAGTTCTCAATGTCTTGTCAACAGCACATCTCGGTCC
 TCCAGCACCGAGTCTTTGGCCTTTCTCCTGTCTGGTCAACGGCGAGGAGCGAGAGCAGACTCACCGGG
 CTGTGTTCAAGTTCATCCCGCGCATCCAGACGAGCTGGAGCTGGATGTGGATGACCCTGTGTTGGTGG
 GGCCGAGGAGGACGACTTCTGGTTCGTGGCTTCAACATGCGCACGGGGGAGCGCGGTGTGTTTCTGCC
 TTCTACGCCATGCGGTGCCCGCCCTGCCAAGGACCTGCTGGGGAGTAAGCGGAGCCCTGCTGGGTGG
 AGCGCTTTGACGTGACGTTCTGGGCTCCGTGGAGGTGCCCTGCCACCAGGGCAACGGCATCCTGTGTGC
 AGCCATGACAGAAGATTGCCACTGCCCGAAACTGACCGTCCACCTGCGCCCTCCTGCCTCCTGTGACCTC
 GAGATCTCTTTCGGGGGTCAAGCTGAGTCTGAGCGGAGGAGGGCCGAGTTCAGCGCTGCAGCCATT
 TCTTCCAGATGAAGAATCTCCTTCTGCGGCTGCCATCCCGCAACAGCTGCTATTTCCGCTTATCAC
 CAAACACCCCTGCTGAGCCGCTTCGCTGCCACGCTTTGTCTCCAGGAGTCCATGAGGCCGGTGGCG
 CAGAGTGTGGCCGCGCCTTCTGGAGTACTACCAAGAGCACCTGGCGTACGCTGCCCCACGGAGGACA
 TCTACCTGGAG

AG**CGGACCG**ACGCGTACGCGGCCGCTCGAG - GFP Tag - GTTTAA

Protein Sequence: >RG219089 representing NM_016431
 Red=Cloning site Green=Tags(s)

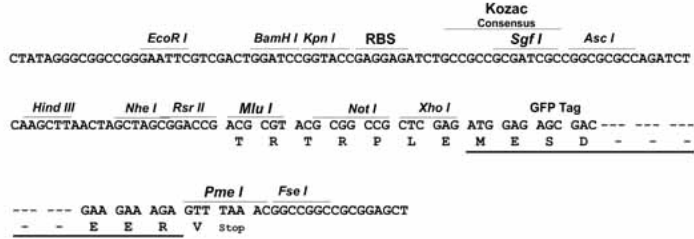
```
MLPDFPSPSTWAPGLLLPSGPALLSPSVLQDSLGRSEQPHPICSFQDDFQEFEMIDDNEEEDDEDEEE
EEEEEGDGEGQEGGDPGSEAPAGPLIPSPSVEEPHKHRPTTLRLTTLGAQDSLNNNGGFDLVRPASWQ
ETALCSPAPEALRELPGLPATDTGPGGAQSPVRPGDCCEGNRPAEPPAPGGTSPSSDPGIEADLRSS
GGRGGRRSSQELSSPGSDSEDAGGARLGRMISSISETELELSSDGGSSSSGRSSHLTNSIEEASSPASEP
EPPREPPRRPAFLPVGPDDTNSYEESGSESEPDLESDADSPWLLSNLVSRMISEGSSPIRCPGQCLSPAP
RPPGEPVSPAGGAAQDSQDPEAAAAGPGGVELVDMETLCAPPPAPAAPRPGPAQPGPCLFLSNPTRDIT
PLWAAPGRAARPGRACSAACSEEEDEEDDEEEEDAEDSAGSPGGRGTGPSAPRDASLVYDAVKYTLVYDE
HTQLELVSLRRCAGLGHSEEDSGGEASEEEAGAALLGGGQVSGDTPDSDPDLTFSKKFLNVFVNSTSR
SSTESFGLFSCLVNGEEREQTHRAVFRFIPRHPDELELDVDDPVLVEAEEDDFWFRGFNMRTGERGVFPA
FYAHAVPGPAKDLLGSKRSPCWVERFDVQFLGSVEVPCHQNGILCAAMQKIATARKLTVHLRPPASCDL
EISLRGVKLSLGGGPEFQRCSHFFQMKNISFCGCHPRNSCYFGFITKHPLLSRFACHVFSQESMRPVA
QSVGRAFLEYQEHLAYACPTEDIYLE
```

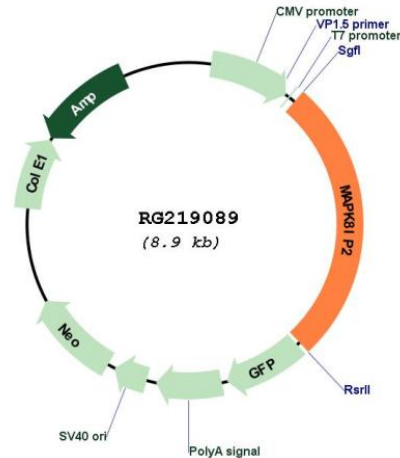
SGPTRRRLE - GFP Tag - V

Restriction Sites: Sgfl-RsrII

Cloning Scheme:

Cloning sites used for ORF Shuttling:



Plasmid Map:


ACCN: NM_016431

ORF Size: 2391 bp

OTI Disclaimer: The molecular sequence of this clone aligns with the gene accession number as a point of reference only. However, individual transcript sequences of the same gene can differ through naturally occurring variations (e.g. polymorphisms), each with its own valid existence. This clone is substantially in agreement with the reference, but a complete review of all prevailing variants is recommended prior to use. [More info](#)

OTI Annotation: This clone was engineered to express the complete ORF with an expression tag. Expression varies depending on the nature of the gene.

Components: The ORF clone is ion-exchange column purified and shipped in a 2D barcoded Matrix tube containing 10ug of transfection-ready, dried plasmid DNA (reconstitute with 100 ul of water).

Reconstitution Method:

1. Centrifuge at 5,000xg for 5min.
2. Carefully open the tube and add 100ul of sterile water to dissolve the DNA.
3. Close the tube and incubate for 10 minutes at room temperature.
4. Briefly vortex the tube and then do a quick spin (less than 5000xg) to concentrate the liquid at the bottom.
5. Store the suspended plasmid at -20°C. The DNA is stable for at least one year from date of shipping when stored at -20°C.

RefSeq: [NM_016431.3](#), [NP_057515.1](#)

RefSeq Size: 3216 bp

RefSeq ORF: 2393 bp

Locus ID: 23542

Cytogenetics: 22q13.33

Protein Families: Druggable Genome

Protein Pathways: MAPK signaling pathway

Gene Summary: This gene encodes a scaffold protein that is thought to be involved in the regulation of the c-Jun amino-terminal kinase signaling pathway. This protein has been shown to interact with and regulate the activity of MAPK8/JNK1 and MAP2K7/MKK7 kinases. [provided by RefSeq, Jun 2017]