

## Product datasheet for **RG219085**

### **ABCF1 (NM\_001025091) Human Tagged ORF Clone**

#### **Product data:**

Product Type:	Expression Plasmids
Product Name:	ABCF1 (NM_001025091) Human Tagged ORF Clone
Tag:	TurboGFP
Symbol:	ABCF1
Synonyms:	ABC27; ABC50
Mammalian Cell Selection:	Neomycin
Vector:	pCMV6-AC-GFP (PS100010)
E. coli Selection:	Ampicillin (100 ug/mL)



[View online »](#)

**ORF Nucleotide Sequence:**

>RG219085 representing NM\_001025091  
 Red=Cloning site Blue=ORF Green=Tags(s)

TTTTGTAATACGACTCACTATAGGGCGGCCGGGAATTCGTCGACTGGATCCGGTACCGAGGAGATCTGCC  
 GCC**CGGATCGCC**

ATGCCGAAGGCGCCCAAGCAGCAGCCGCCGGAGCCCGAGTGGATCGGGGACGGAGAGAGCACGAGCCCAT  
 CAGACAAAAGTGGTGAAGAAAGGGAAGAAGGACAAGAAGATCAAAAAACGTTCTTTGAAGAGCTGGCAGT  
 AGAAGATAAACAGGCTGGGGAAGAAGAGAAAGTCTCAAGGAGAAGGAGCAGCAGCAGCAACAGCAA  
 CAGCAGCAAAAAAAGCGAGATACCCGAAAAGGCAGGCCGAAGAAGGATGTGGATGATGATGGAGAAG  
 AGAAAGAGCTCATGGAGCGTCTTAAAGACTCTCAGTGCCAACCAGTGTAGGAGGATGAAGTACCCGC  
 CCCAAAACCCCGGAGGGAAGAAAACCAAGGGTGGTAATGTTTTGCAGCCCTGATTCAGGATCAGAGT  
 GAGGAAGAGGAGGAGGAAGAAAACATCCTCCTAAGCCTGCCAAGCCGGAAGAATCGGATCAATAAGG  
 CCGTATCTGAGGAACAGCAGCCTGCACTCAAGGGCAAAAAGGAAAGGAAGAAGTCAAAGGGAAGGC  
 TAAGCCTCAAAATAAATTCGCTGCTCTGGACAATGAAGAGGAGGATAAAGAAGAAGAAATTAATAAGGAA  
 AAGGAGCCTCCCAACAAGGGAAGGAGAAGGCCAAGAAGGCAGAGCAGGGTTAGAGGAAGAAGGAGAAG  
 GGAAGAAGAGGAGGAGGAAGGAGGAGAGTCTAAGGCAGATGATCCCTATGCTCATCTTAGCAAAAAGGA  
 GAAGAAAAGCTGAAAAACAGATGGAGTATGAGCGCCAAGTGGCTTCATTAAGCAGCCAATGCAGCT  
 GAAAATGACTTCTCCGTGTCCCAGGCGGAGATGTCCTCCCGCAAGCCATGTTAGAAAATGCATCTGACA  
 TCAAGCTGGAGAAGTTCAGCATCTCCGCTCATGGCAAGGAGCTGTTGTCATGCAGACCTGTACATTGT  
 AGCCGGCCCGCTACGGGCTGGTAGGCCAATGGCAAGGGCAAGACCACACTCCTCAAGCACATTGCC  
 AACCGAGCCCTGAGCATCCCTCCAACATTGATGTGTTGCTGTGTGAGCAGGAGGTGGTAGCAGATGAGA  
 CACCAGCAGTCCAGGCTTCTTCGAGCTGACACCAAGCGATTGAAGCTGCTGGAAGGAGCGGGCGCT  
 TCAGGGACAGCTGGAACAAGGGGATGACACAGCTGCTGAGAGGCTAGAGAAGGTGTATGAGGAATTGCGG  
 GCCACTGGGGCGCAGCTGCAGAGGCCAAAGCACGGCGGATCCTGGCTGGCCTGGGCTTTGACCCTGAAA  
 TGCAGAATCGACCACACAGAAGTTCTCAGGGGCTGGCGCATGCGTGTCTCCCTGGCCAGGGCACTGTT  
 CATGGAGCCCACTGCTGATGCTGGATGAGCCCAACACCTGGACCTCAACGCTGTCATCTGGCTT  
 AATAACTACCTCCAGGGCTGGCGGAAGACCTTGTGATCGTCTCCATGACCAGGGCTTCTGGATGATG  
 TCTGCACTGATATCATCCACCTCGATGCCAGCGGCTCCACTACTATAGGGCAATTACATGACCTTCAA  
 AAAGATGTACCAGCAGAAGCAGAAAGAAGTCTGAAACAGTATGAGAAGCAAGAGAAAAAGCTGAAGGAG  
 CTGAAGGCAGGGGAAGTCCACCAAGCAGGGCAAAAACAACGAAGGAAGCCCTGACTCGGAAGCAGC  
 AGAAATGCCGACGAAAAACCAAGATGAGGAATCCAGGAGGCCCTGAGCTCCTGAAGCCCTAAGGA  
 GTACACTGTGCGCTTCACTTTCCAGACCCCCACCCTCAGCCCTCCAGTGTGGGTGCTGCATGGTGTG  
 ACATTCGGCTACCAGGGACAGAAACCCTCTTTAAGAAGTGGATTTTGGCATCGACATGGATTCAAGGA  
 TTTGCATTGTGGGCCCTAATGGTGTGGGAAGAGTACGCTACTCTGCTGCTGACTGGCAAGCTGACACC  
 GACCCATGGGGAATGAGAAAGAACCACCGGCTGAAAATTGGCTTCTTCAACCAGCAGTATGCAGAGCAG  
 CTGCGCATGGAGGAGACGCCACTGAGTACCTGCAGCGGGGCTTCAACCTGCCCTACCAGGATGCCCGCA  
 AGTGCTGGGCCGCTTCGGCTGGAGAGTCACGCCACACCATCCAGATGCAAACTCTCTGGTGGTCA  
 GAAGGCGCGAGTTGTGTTGCTGAGCTGGCCTGTCGGAAACCTGATGTCCTCATCTTGGACGAGCCAACC  
 AATAACCTGGACATAGAGTCTATTGATGCTCTAGGGGAGGCCATCAATGAATACAAGGGTCTGTGATCG  
 TTGTCAGCCATGATGCCGACTCATCACAGAAACCAATTGCCAGCTGTGGGTGGTGGAGGAGCAGAGTGT  
 TAGCCAAATCGATGGTACTTTGAAGACTACAAGCGGGAGGTGTTGGAGCCCTGGGTGAAGTCATGGTC  
 AGCCGGCCCCGAGAG

**ACGGTACGCGGCCGCTCGAG** – GFP Tag – GTTTAA

**Protein Sequence:** >RG219085 representing NM\_001025091  
 Red=Cloning site Green=Tags(s)

```

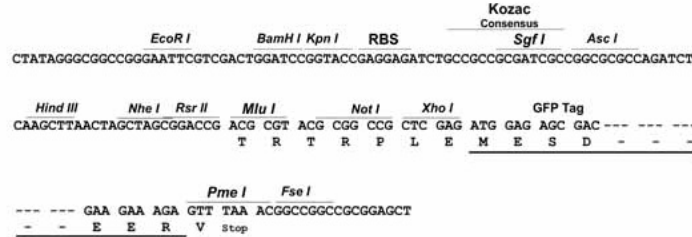
MPKAPKQQPPEPEWIGDGESTSPSDKVVKKGKKDKKIKKTFEELAVEDKQAGEEEEKVLKEKEQQQQQQQ
QQQKKRDRTRKGRRKDVDDGEEKELMERLKKLSVPTSDEEDEVPAKPRGGKTKGGNVFAALIQDQS
EEEEEEKHPPKPAKPEKNRINKAVSEEQPALGKGGKKEEKSKGKAKPQNKFAALDNEEEDKEEIIKE
KEPPKQKKEKAKKAEQGSEEEEGEEEEEEGGESKADDPY AHL SKKEKKLKKQMEYERQV ASLKAANAA
ENDFSV SQAEMSSRQAMLENASDIKLEKFSI SAHGKELFVNADLYIVAGRRYGLVGPNGKGTTL LKHIA
NRALSIPPNI DVLLCEQE VVADETPAVQAVLRADTKRLK LLEEERLQQGLEQGGDTAAERLEKVY EELR
ATGAAAAEAKARRILAGLGFDPENRPTQKFSGGWRMRVSLARALFMEPTLLMLDEPTNHLDLNAVIWL
NNYLQGWRTLLIVSHDQGLDDVCTDI IHLDAQRLHYRGNMYTFKKMYQQKQKELLKQYEQEKKLKE
LKAGGKSTKQAEKQTKEALTRKQKCR RNQDEESQEAPELLKRPKEYTVRFTFPDPPPLSPPVLGLHG V
TFGYQQKPLFKNLDFGIDMSR ICIVGPNGVGKSTLLLLLTGKLTPTHGEMRKNHRLKIGFFNQYAEQ
LRMEETPTEYLQ RGFNL PYQDARKCLGRFGLESHAHTIQICKL SGGQKARVVF AELACREPDVLI LDEPT
NNLDIESIDALGEAINEYKGA VIVVSHDARLITETNCQLWVVEEQSVSQIDGDFEDYKREVLEALGEVMV
SRPRE
  
```

TRTRPLE - GFP Tag - V

**Restriction Sites:** Sgfl-Mlul

**Cloning Scheme:**

Cloning sites used for ORF Shutting:


**ACCN:** NM\_001025091

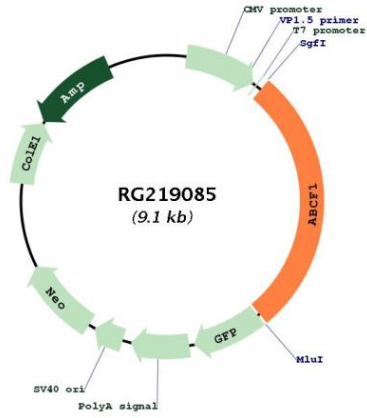
**ORF Size:** 2535 bp

**OTI Disclaimer:** Due to the inherent nature of this plasmid, standard methods to replicate additional amounts of DNA in *E. coli* are highly likely to result in mutations and/or rearrangements. Therefore, OriGene does not guarantee the capability to replicate this plasmid DNA. Additional amounts of DNA can be purchased from OriGene with batch-specific, full-sequence verification at a reduced cost. Please contact our customer care team at [custsupport@origene.com](mailto:custsupport@origene.com) or by calling 301.340.3188 option 3 for pricing and delivery.

The molecular sequence of this clone aligns with the gene accession number as a point of reference only. However, individual transcript sequences of the same gene can differ through naturally occurring variations (e.g. polymorphisms), each with its own valid existence. This clone is substantially in agreement with the reference, but a complete review of all prevailing variants is recommended prior to use. [More info](#)

<b>OTI Annotation:</b>	This clone was engineered to express the complete ORF with an expression tag. Expression varies depending on the nature of the gene.
<b>Components:</b>	The ORF clone is ion-exchange column purified and shipped in a 2D barcoded Matrix tube containing 10ug of transfection-ready, dried plasmid DNA (reconstitute with 100 ul of water).
<b>Reconstitution Method:</b>	<ol style="list-style-type: none"><li>1. Centrifuge at 5,000xg for 5min.</li><li>2. Carefully open the tube and add 100ul of sterile water to dissolve the DNA.</li><li>3. Close the tube and incubate for 10 minutes at room temperature.</li><li>4. Briefly vortex the tube and then do a quick spin (less than 5000xg) to concentrate the liquid at the bottom.</li><li>5. Store the suspended plasmid at -20°C. The DNA is stable for at least one year from date of shipping when stored at -20°C.</li></ol>
<b>RefSeq:</b>	<u><a href="#">NM_001025091.2</a></u>
<b>RefSeq Size:</b>	3474 bp
<b>RefSeq ORF:</b>	2538 bp
<b>Locus ID:</b>	23
<b>UniProt ID:</b>	<u><a href="#">Q8NE71</a></u>
<b>Cytogenetics:</b>	6p21.33
<b>Protein Families:</b>	Druggable Genome
<b>Gene Summary:</b>	The protein encoded by this gene is a member of the superfamily of ATP-binding cassette (ABC) transporters. ABC proteins transport various molecules across extra- and intra-cellular membranes. ABC genes are divided into seven distinct subfamilies (ABC1, MDR/TAP, MRP, ALD, OABP, GCN20, White). This protein is a member of the GCN20 subfamily. Unlike other members of the superfamily, this protein lacks the transmembrane domains which are characteristic of most ABC transporters. This protein may be regulated by tumor necrosis factor-alpha and play a role in enhancement of protein synthesis and the inflammation process. [provided by RefSeq, Jul 2008]

Product images:



Circular map for RG219085