

## Product datasheet for **RG219039**

### DENND4C (NM\_017925) Human Tagged ORF Clone

#### Product data:

**Product Type:** Expression Plasmids  
**Product Name:** DENND4C (NM\_017925) Human Tagged ORF Clone  
**Tag:** TurboGFP  
**Symbol:** DENND4C  
**Synonyms:** bA513M16.3; C9orf55; C9orf55B; RAB10GEF  
**Mammalian Cell Selection:** Neomycin  
**Vector:** pCMV6-AC-GFP (PS100010)  
**E. coli Selection:** Ampicillin (100 ug/mL)  
**ORF Nucleotide Sequence:** >RG219039 representing NM\_017925  
Red=Cloning site Blue=ORF Green=Tags(s)

TTTTGTAATACGACTCACTATAGGGCGGCCGGAATTCGTCGACTGGATCCGGTACCGAGGAGATCTGCC  
GCC**CGATCGCC**

ATGGGAGCTACTATTGAGTGCTGGGATCCTGAAACCAATATCCACTTCCAGTTTTTTCACTTTTGTCT  
TGACAGGTTCTTCAGCCAAAAGGTATATGGAGCTGCCATTTCAGTTTTATGAACCTTACTCTCGGGA  
TCTATCAGAGAACAGCTTATGCACCTGGGCTTGTGACGCTGTGGAGAGAAAAATGGTCTCCAAATCC  
ATCAATACAAACAAATGCATTTGTTTACTCTCACACTGGCCTTTTTTTGAAGCTTTTAGGAAATTTCTTA  
TGTTTATCTACAACTTTCTGTGCTGGACCACATCCTCTCCCATTGAAAAGCACATTTACATTTTAT  
GCAAAACATCCCTTTTCCTTACCACAAAAGACCGAGAATCCTTGTCCAGCTGTCAGTCCATGATGATTA  
ATATTATCACAGCCAGTTTCTACACCTTACCCTAAGTGGAGCCAACCTTAGCACCTTGCTAATGAATC  
TGGGTCCTGAGAAATGTGCAACACTGCTGCTCTTTGTTTTACTTGAGAGTAAAATCTGCTGCATTTCT  
TAGGCCAGCTGTCTTACTGGGGTAGCTGAAGCTGTTGTAGCTATGATCTTTCCATTTTCAGTGGCAATGC  
CCATATATCCCTTTGTCTCTTCACTGGCTGCAGTGTAGTGCACCTTACCATTTATAGTTGGAG  
TTGACTCAAGGTATTTGATCTTCATGACCCACCACAAGATGTTGTTGCATTGACTGGATACGAACAT  
GTTATATGTATCAGATGAAAAGAAGAATGAAGTGAAGCAACTCCCAAAAAGCCGTGCAAAAATCTA  
CTTAGCACCTTAAAGAAATGTATCCCCAGCTGTCTTCAGTTCACCAAAAACCTCAAGAAGCTCAGCGA  
TTGACATGACTCCAATTGAAGCAGATTTCTCTGGCAAAAAGAGATGACACAGCTTGAGATGGAATTC  
AGAGGCATTTTTGCGCTTTATGGCGTCTATTTTAAAAGGATATAGAACATATCTCAGACCAATCACAGAG  
GCTCCTTCAAATAAGCCACAGCTGCTGATTCATTGTTTGACCGACAGGGATTTTTAAAAAGTCGAGATC  
GTGCTATGCAAAATCTATACCCTTTTATCCAAAACACAGATTTTTATTCGTTTCATTGAAGAATGCAG  
TTTTGTAAGTGATAAAGATACTGGATTAGCATTTTTTGATGACTGCATAGAAAAGTTGTTTCCTGATAAA  
GGCACAGAGAAAACAGATAAGGTTGATTTGATTCAGCAGAAGATACCAGATTGATAGAAGTATGATGATT  
CACAGAAAAGTGAGCATACTGTATTTAATGCCGCCAGAGCCACCTCCTGATGATGAAAAGGACCTGTC  
ACCAAAGTACAGTTACAAATACTTTCCAAGACTGGACCTTAAGCTTTTTGACAGACCGCAGGAGTTGAAA



[View online »](#)

CTTTGTTTTAGTAGACACCCTACTGGAATAGCATTACAAAGAGTCCACCTCTCATGGCTAAGAGAACTA  
 AACAGGAAATAAAAAACAGCTCATAAATTGGCGAAGAGATGTTATACAAATCCACCACAGTGGGCCAAGTG  
 TCTGTTTAGTCATTGTTACAGTTTATGGTTTATTTGTCTTCCGGCCTATGTTAGAGTTTCTCATCTAAA  
 GTCAGAGCACTTCAGCAGGCATATGATGTACTTATTAAGATGAGGAAAACAGATGGATCCCTTAGATG  
 AGGTGTGCTATCGAGTAGTGATGCAGCTTTGTGGACTTTGGGGTCATCCTGTTTTAGCAGTGAGAGTCTT  
 ATTTGAAATGAAAACGCTAGGATAAAGCCTAATGTCTTACTTATGGTTATTATAAAGGTAGTCTTG  
 GAGAGCCCGTGGCCTAGCAGTACCCGCACTGGTATTTTCTTATGGACGAAGGTACGGAATGGTACGCTG  
 GCTTGGCACAGTTTAGGCAGCCGCTTAAAAAGACTGTGCAAAGGTCACAGGTCTCCTCAATATCAGGTGG  
 TCAGTCTGACCAAGGATACGGGTCTAAGGATGAACTTATAAAGGATGATGCAGAAATTCATGTGCCTGAA  
 GAACAGGCAGCAAGAGAATTGATAACTAAAAACAAAATGCAAACAGAAGAGGTGTGTGATGCCTCTGCTA  
 TTGTGGCAAAAACATTCACAACCTAGTCCAGAGCCTCACAGTCTACTGAACCTCTGCATGGGGCAGCAG  
 TATTGTGAAAGTCCGTCTGGTATATTTGATGTCAACAGCAGGAAAAGTAGCACTGGTAGTATATCAAAAT  
 GTGCTGTTTTCTACTCAAGATCCAGTTGAAGATGCAGTCTTTGGCGAAGCTACTAATCTCAAGAAGAATG  
 GTGATAGAGGAGAAAAAGACAAAAGCATTTCCTGAGAGGAGTTGTAGTTTTAGTTCTGAAAGTCGAGC  
 AGGAATGTTGCTTAAGAAGAGTAGTTTGGATTGCAATTCAAGTGAATGGCTATCATGATGGGAGCAGAT  
 GCCAAGATTCTCACAGCAGCATTGACATGCTCTAAGACTTCTCTACTTCAATATTGCAAGAACCCATAGCT  
 TTGAGAATGTTAGCTGTACCTACCTGATAGTAGGACTTGTATGTCTGAAAGCACTTGAATCCTGAGCA  
 CAGATCATCTCCGGTGCCAGAGATGCTTGAGGAAAGCCAGAAGCTCCTTGAGCCTGTGGTTGATGACGTA  
 CCTAAAACACTGCAACAGTAGATACATATGAGAGTCTACTAAGTATAGTAAACAGTAATCAGTCCAGAG  
 ACTTGAAAACAGTATCCAAGATCTGAGGAATAAGAGAAGTAGTTTATATGGTATTGCTAAGGTGGTTCA  
 GAGGGAAGATGTTGAACTGGACTAGATCCTTTGTCTCTTTAGCCACTGAATGTACAGGAGGAAAAACT  
 CCTGATCTGAAGATAAGTTGTTTTCTCCAGTTATTGCACGTAATCTGGCTGATGAAATGAAAAGCTATA  
 TGACCTAAAAAGTCCCCTAGGTAGTAAATCTTCTAGTATGGAATTACACAGAGAGGAAAACAGAGAGTC  
 TGGCATGACTACTGCATTTATTCATGCTCTAGAGAGGAGATCAAGCCTACCTTTAGATCATGGTTACCA  
 GCACAGGAAAATCCTGAAAGTGAAGAGCTCACCTGCAGTGCCAGGTCTAAAACCTTTTACTGGCGTT  
 TCAAGCAGCAAACCCCTCTCGAACTCATAAAGAAGCTTCAACTTCTTTGTGAGCACTGGTGCCTCTTC  
 GCCACATGGCTCGTTGGGTTCTGTAGTAAATCTTTGTGACGGCTAAAGCTGGATAATACTCTCAGGG  
 CCCAAGATAGATGCTGAAATCTGGTATGAAACAAGCAGCGACAGTAGCCAGTAAGATGTGGGTAGCTG  
 TTGCGTCTGCCTACAGCTACTCAGATGATGAGGAAGAACTAATAGAGACTACAGCTTCCAGCTGGCCT  
 AGAAGACCATATTTGGGGGAGAATATATCGCCTAACACAAGTATCTCAGGGTTGGTCCCAGTGAACCT  
 ACCCAGAGCAACAAGTCTTGGCAGTAGCAGCAGTAGTGGAGATGTAGGAAAACGCATTATCCAACAG  
 GTGAAGTTCATTTCCAAGAGGCATGAAAGGGCAAGACTTTGAAAATCAGATCATGGTTCTTCTCAAAA  
 TACCAGCATGTCTAGCATCTATCAGAATTGTGCAATGGAGGTTTTGATGTCCAGTTGTTACAGTGTAGA  
 GCTTGTGGAGCTTTAGTTTATGATGAAGAAATTATGGCTGGATGGACAGCAGATGACTCAAAATTTGAATA  
 CAGCTTGTCCATTCTGTAAAAGCAACTTCTGCCTCTTCTCAATATAGAATTCAAAGATTTGAGAGGTTT  
 TGCAAGCTTTTCTGAAACCAAGTACCTCTGGTGACAGTTTACAAGTGGAAAGCATTCCATTGGCAAAAT  
 GAATCCTTGGAGCACAAACCTGTATCCAGTTTAGCAGAACCTGACTTGATCAACTTTATGGACTTCCCAA  
 AACATAACCAGATCATAACTGAAGAAAACAGGCTCTGCAGTTGAACCAAGTATGAAATAAGAGAGCCAG  
 TGGAGATGTCCAAACTATGAAAATTTTCTCTGTGCCTAATAGTTTATCAAAGCGAAATGTGTCTTTGACT  
 CGAAGTACAGTGTGGAGGCCATTGCAGAAATTGACTTTACCCAGCGACCGTTTTCATGGCATCTCAA  
 CAGTTAGTCTTCCAAATAGTCTGCAGGAAGTTGTGGATCCTTTAGGAAAAAGACCAATCCTCCCCTGT  
 TTCTGTGCCCTACTTGAGTCTCTAGTACTCCGTAAGAAGTGAATCTTTGCTAGAAAAAGAGGTGAT  
 CAGGTGATTACATACATCTTCTTTCATCAATCAACATCCAATCATTTTCTGGAACCTCGTTTGGTATTTC  
 GACGTTTGGACCTTCTAGTAACTTCCAGGACTTATCCTCACATCTGAACATTGTAATGAAGGTGTACA  
 GCTTCTCTGTCTCTGTCCCAGGATAGCAAACCTGTGTATATTCAGCTGTTATGGGATAATATCAAC  
 CTTTCATCAGGAACCAAGAGAACCTCTGTATGTCTCATGGAGGAATTTAATTCTGAAAAGAAATCATCTC  
 TCCTGTGACAGGAACAACAAGAAACAAGCACTTTAGTAGAAACCATCAGGCAGAGTATTCAGCACATAA  
 TGTTCTTAAACCCATCAACCTACTTTCACAGCAAATGAAGCCAGGCATGAAAAGCAAAGGAGTTTATAC  
 AGAGAAATCCTCTTCTTATCATTAGTGTCTCTAGGAAGAGAGAATATTGATATTGAGGCATTTGACAATG  
 AATATGGAATTGCATACAATAGTCTGTCTTTCAGAGATTCTTGAAGGTTGCAGAAAATGATGCTCCACC  
 AAGTGCCAGTGTGAGTGGTGCAGGAAGTGTGGAGCGCCTCTCATT

ACGCGTACGCGGCCGCTCGAG - GFP Tag - GTTTAA

Protein Sequence:

>RG219039 representing NM\_017925  
 Red=Cloning site Green=Tags(s)

MGATIECWDPETKYPLPVFSTFVLTGSSAKKVYGAAIQFYEPYSRELLSEKQLMHLGLLTPVERKMVSKS  
 INTNKCICLLSHWPFFAEFRKFLMFIYKLSVSGPHPLPIEKHISHFMQNI PFPSPQRPRILVQLSVHDAL  
 ILSQPVSTPLPLSGANFSTLLMNLGPENCATLLLFVLLSKILLHSLRPAVLTGVAEAVVAMIFPFQWQC  
 PYIPLCPLSLAAVLSAPLPFIVGVDSRYFDLHDPQDVVCCIDLDTNMLYVSDKKNMNWKQLPKKPKCNL  
 LSTLKKLYPQLSSVHQKTEGSAIDMTPIEADFSWQKKMTQLEMEIQEAFLRFMASILKGYRTYLRPITE  
 APSNKATAADSLFDRQGFKSRDRAYAKFYTL SKTQIFIRFIEECFVSDKDTGLAFFDDCIEKLPDK  
 GTEKTDKVDVDFSAEDTRLIELDDSQKSEHTVFIMPPEPPDDGKDLSPKYSYKYFPRDLKLFDRPQELK  
 LCFSRHPTGNSITKSPPLMAKRTKQEIKAHKLAKRCYTNPPQWAKCLF SHCYSLWFICLPAYVVRVSHPK  
 VRALQQAYDVL IKMRKTDVDPDEV CYRVVMQLCGLWGHVPLAVRVL FEMKTARIKPNAITGYGNKVVL  
 ESPWPSSTRSGIFLWTKVRNVVRLA QFRQPLKKT VQRSQVSSI SGGQSDQGYGSKDEL IKDDAEIHVPE  
 EQAARELITKTKMQTEEVCDASAI VAKHSQPSPEPHSPTPEPPAWGSSI VKVPSGIFDVNSRKSSTGSISN  
 VLFSTQDPVEDAVFGEATNLKKNDRGEKRQKHFPERSCSFSSES RAGMLLKKSSLDNSNSEMAIMMGAD  
 AKILTAALTCPKTSLLHIARTHSFENVSCHLPDSRTCMESESTWNPEHRSSPVPEMLEESQELLEPVDDV  
 PKTTATVDTYESLLSDSNSNQRDLKTVSKDLNRKSSLYGIKVVQREDVETGLDPLSLLATECTGGKT  
 PDESKLFPVIAARNLADEIESYMNLSPLGSKSSMELHREENRESGMTAFIHALERRSSLPLDHGSP  
 AQENPESEKSSPAVSRSKTFTGRFKQTPSRTHKERSTLSALVRSSPHGSLGSVNSLSGLKLDNILSG  
 PKIDVLSGKMQAATVASKMWWAVASAYSYSDDDEETNRDYSFPAGLEDHILGENISPNTISGLVPSEL  
 TQSNLSLGSSSSGDVGKLHYPTGEVPPRGMKGQDFEKSDHGSSQNTSMSSIYQNCAMEVLMSSCSQCR  
 ACGALVYDEEIMAGWTADSNLNTACPFCKSNFLPLLNI EFKDLRGSASFFLKPSTSGDSLQSGSIPLAN  
 ESLEHKPVSSLAEPDLINFMDFPKHNIITEETGSAVEPSDEIKRASGDVQTMKISSVPNSLSKRNVS LT  
 RSHSVGGPLQNI DFTQRPFHGISTVSLPNSLQEVVDPLGKRPNPPVSVPYLSPLVLRKELESLENEGD  
 QVIHTSSFINQHP IIFWNLVWYFRRLDLPNL PGLILTSEHCNEGVQLPLSSLSQDSKLVYIQLLWDNIN  
 LHQEPREPLYVSWRNFNSEKSSLLSEEQETSTLVETIRQSIQHNNVLKPINLLSQMKPMKQRSLY  
 REILFLSLVSLGRENIDIEAFDNEYGIAYNSLSSEILERLQKIDAPPSASVEWCRKCFGAPLI

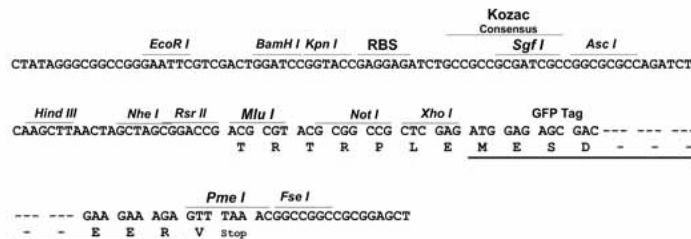
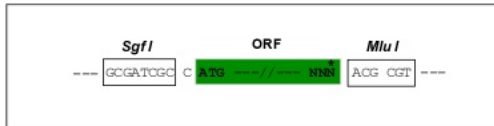
TRTRPLE - GFP Tag - V

Restriction Sites:

Sgfl-MluI

Cloning Scheme:

Cloning sites used for ORF Shutting:

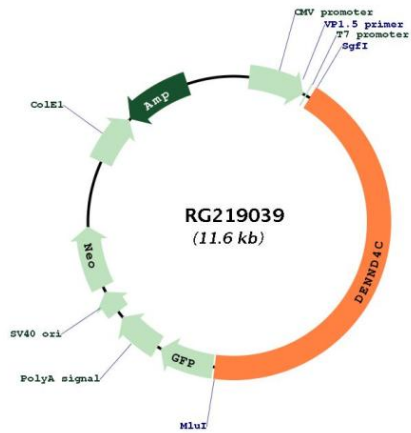


ACCN:

NM\_017925

<b>ORF Size:</b>	5019 bp
<b>OTI Disclaimer:</b>	<p>Due to the inherent nature of this plasmid, standard methods to replicate additional amounts of DNA in E. coli are highly likely to result in mutations and/or rearrangements. Therefore, OriGene does not guarantee the capability to replicate this plasmid DNA. Additional amounts of DNA can be purchased from OriGene with batch-specific, full-sequence verification at a reduced cost. Please contact our customer care team at <a href="mailto:custsupport@origene.com">custsupport@origene.com</a> or by calling 301.340.3188 option 3 for pricing and delivery.</p> <p>The molecular sequence of this clone aligns with the gene accession number as a point of reference only. However, individual transcript sequences of the same gene can differ through naturally occurring variations (e.g. polymorphisms), each with its own valid existence. This clone is substantially in agreement with the reference, but a complete review of all prevailing variants is recommended prior to use. <a href="#">More info</a></p>
<b>OTI Annotation:</b>	This clone was engineered to express the complete ORF with an expression tag. Expression varies depending on the nature of the gene.
<b>Components:</b>	The ORF clone is ion-exchange column purified and shipped in a 2D barcoded Matrix tube containing 10ug of transfection-ready, dried plasmid DNA (reconstitute with 100 ul of water).
<b>Reconstitution Method:</b>	<ol style="list-style-type: none"> <li>1. Centrifuge at 5,000xg for 5min.</li> <li>2. Carefully open the tube and add 100ul of sterile water to dissolve the DNA.</li> <li>3. Close the tube and incubate for 10 minutes at room temperature.</li> <li>4. Briefly vortex the tube and then do a quick spin (less than 5000xg) to concentrate the liquid at the bottom.</li> <li>5. Store the suspended plasmid at -20°C. The DNA is stable for at least one year from date of shipping when stored at -20°C.</li> </ol>
<b>RefSeq:</b>	<a href="#">NM_017925.4</a> , <a href="#">NP_060395.4</a>
<b>RefSeq Size:</b>	7023 bp
<b>RefSeq ORF:</b>	5730 bp
<b>Locus ID:</b>	55667
<b>UniProt ID:</b>	<a href="#">Q5VZ89</a>
<b>Cytogenetics:</b>	9p22.1
<b>Gene Summary:</b>	Guanine nucleotide exchange factor (GEF) activating RAB10. Promotes the exchange of GDP to GTP, converting inactive GDP-bound RAB10 into its active GTP-bound form. Thereby, stimulates SLC2A4/GLUT4 glucose transporter-enriched vesicles delivery to the plasma membrane in response to insulin.[UniProtKB/Swiss-Prot Function]

Product images:



Circular map for RG219039