

Product datasheet for **RG219036**

KAT3A / CBP (CREBBP) (NM_004380) Human Tagged ORF Clone

Product data:

Product Type:	Expression Plasmids
Product Name:	KAT3A / CBP (CREBBP) (NM_004380) Human Tagged ORF Clone
Tag:	TurboGFP
Symbol:	KAT3A / CBP
Synonyms:	CBP; KAT3A; MKHK1; RSTS; RSTS1
Mammalian Cell Selection:	Neomycin
Vector:	pCMV6-AC-GFP (PS100010)
E. coli Selection:	Ampicillin (100 ug/mL)
ORF Nucleotide Sequence:	>RG219036 representing NM_004380 Red=Cloning site Blue=ORF Green=Tags(s)

TTTTGTAATACGACTCACTATAGGGCGGCCGGAATTCGTCGACTGGATCCGGTACCGAGGAGATCTGCC
GCC**CGATCGCC**

ATGGCTGAGAACTTGCTGGACGGACCGCCCAACCCAAAAGAGCCAAACTCAGCTCGCCCGTTTCTCGG
CGAATGACAGCACAGATTTGGATCATTGTTTGACTTGGAAAATGATCTTCTGATGAGCTGATACCCAA
TGGAGGAGAATTAGGCCTTTTAAACAGTGGGAACCTTGTCCAGATGCTGCTTCAAACATAAACA
TCGGAGCTTCTACGAGGAGGCAGCGGCTCTAGTATCAACCCAGGAATAGGAAATGTGAGCGCCAGCAGCC
CCGTGCAGCAGGGCCTGGGTGGCCAGGCTCAAGGGCAGCCGAACAGTGTAAACATGGCCAGCCTCAGTGC
CATGGGCAAGAGCCCTCTGAGCCAGGGAGATTCTTCAGCCCCAGCCTGCCTAAACAGGCAGCCAGCACC
TCTGGGCCACCCCGCTGCCTCCCAAGCACTGAATCCGCAAGCACAAGCAAGTGGGGCTGGCGACTA
GCAGCCCTGCCACGTACAGACTGGACCTGGTATCTGCATGAATGCTAACTTTAACCCAGACCCACCCAGG
CCTCCTCAATAGTAACTCTGGCCATAGCTTAATTAATCAGGCTTCACAAGGGCAGGCGCAAGTCAAT
GGATCTCTTGGGGCTGCTGGCAGAGGAAGGGGAGCTGGAATGCCGTACCCACTCCAGCCATGCAGGGCG
CCTCGAGCAGCGTGTGGCTGAGACCCTAACGCAGGTTTCCCCGAAATGACTGGTCACGCGGGACTGAA
CACCCGACAGGCAGGAGGCATGGCCAAGATGGGAATAACTGGGAACACAAGTCCATTTGGACAGCCCTTT
AGTCAAGCTGGAGGGCAGCCAATGGGAGCCACTGGAGTGAACCCAGTTAGCCAGAAACAGAGCATGG
TCAACAGTTTGGCCACCTTCCCTACAGATATCAAGAATACTTCAGTCACCAACGTGCCAAATATGTCTCA
GATGCAAACATCAGTGGGAATTGTACCCACACAAGCAATTGCAACAGGCCCCACTGCAGATCCTGAAAA
CGCAAACCTGATACAGCAGCAGCTGGTTCTACTGCTTCATGCTCATAAGTGTGAGAGCAGAGCAAGCAA
ACGGAGAGGTTTCGGGCTGCTCGCTCCCGCATTGTGCAACCATGAAAAACGTTTTGAATCACATGACGCA
TTGTCAGGCTGGGAAAGCCTGCCAAGTTGCCATTGTGCATCTTACGACAAATCATCTCTCATTGGAAG
AACTGCACACGACATGACTGTCTGTTTGCCTCCCTTTGAAAAATGCCAGTGACAAGCGAAACCAACAAA
CCATCCTGGGGTCTCCAGCTAGTGAATTCAAAACACAATTGGTTCTGTTGGCACAGGGCAACAGAATGC
CACTTCTTAAGTAACCCAAATCCCATAGACCCAGCTCCATGCAGCGAGCCTATGCTGCTCTCGGACTC



[View online »](#)

CCCTACATGAACCCAGCCCCAGACGCAGCTGCAGCCTCAGGTTCTTGCCAGCAACCAGCACAGCCTCAAA
CCCACCAGCAGATGAGGACTCTCAACCCCTGGGAAATATCCAATGAACATTCCAGCAGGAGGAATAAC
AACAGATCAGCAGCCCCAACTTGATTTGAGAATCAGCTCTTCCGACTTCCCTGGGGGCCAAACCCA
CTGATGAACGATGGCTCCAACCTTGGAACATTGGAACCTCAGCACTATACCAACAGCAGCTCCTCCTT
CTAGCACCGGTGTAAGGAAAGGCTGGCAGCAACATGCTACTCAGGACCTGCGGAGCCATCTAGTGCATAA
ACTCGTCCAAGCCATCTCCCAACACCTGATCCCGCAGCTCTAAGGATCGCCGCATGGAAACCTGGTA
GCCTATGCTAAGAAAGTGAAGGGGACATGTACGAGTCTGCCAACAGCAGGGATGAATATATCATTAT
TAGCAGAGAAAACTACAAGATACAAAAAGAACTAGAAGAAAAACGGAGGTCGCGTTTACATAAAACAAGG
CATCTTGGGGAACCCAGCCAGCCTTACCAGCCCCGGGGCTCAGCCCCCTGTGATTCCACAGGCACAACT
GTGAGACCTCAAATGGACCCCTGTCCCTGCCAGTGAATCGCATGCAAGTTTCTCAAGGGATGAATTCAT
TTAACCCCATGTCCTTGGGGAACGTCCAGTTGCCACAAGCACCCATGGGACCTCGTGACGCTCCCAAT
GAACCACTCTGTCCAGATGAACAGCATGGGCTCAGTGCCAGGGATGGCCATTTCTCCTCCCGAATGCC
CAGCCTCCGAACATGATGGGTGCACACCAACAACATGATGGCCAGGCGCCGCTCAGAGCCAGTTTC
TGCCACAGAACAGTTCCCGTCATCCAGCGGGGCGATGAGTGTGGGCATGGGCAGCCGCCAGCCAAAC
AGGCGTGTACAGGGACAGGTGCCTGGTGTGCTCTTCTAACCTCTCAACATGCTGGGGCTCAGGCC
AGCCAGCTACCTTGCCCTCCAGTGACACAGTACCAGTGCACCAACACCCGCTCCTGCTCCACCGCTG
CTGGCATGCCATCTCTCCAGCACACGACACCACCTGGGATGACTCCTCCCGAGCCAGCAGCTCCCACTCA
GCCATCAACTCCTGTGTCGTCTTCCGGGCAGACTCCCACCCGACTCCTGGCTCAGTGCCAGTGCTACC
CAAACCCAGAGCACCCCTACAGTCCAGGCAGCAGCCAGGCCAGGTGACCCCGCAGCCTCAAACCCAG
TTCAGCCCCGCTGTGGCTACCCCTCAGTCAATCGCAGCAACAGCCGACGCTGTGCACGCCAGCCTCC
TGGCACACCGCTTCCAGGCAGCAGCCAGCATTGATAACAGAGTCCCTACCCCTCCTCGTGGCCAGC
GCAGAAACCAATCCCAGCAGCCAGGACCTGACGTACCTGTGCTGGAAATGAAGACGGAGACCCAAAGCAG
AGGACACTGAGCCCGATCCTGGTGAATCCAAAGGGGAGCCAGGTCTGAGATGATGGAGGAGATTGCA
AGGAGCTTCCCAAGTAAAGAAGAAACAGACATAGCAGAGCAGAAATCAGAACCAATGGAAGTGGATGAA
AAGAAACCTGAAGTGAAGTGAAGTAAAGAGGAAGAAGAGAGTAGCAGTAACGGCACAGCCTCTCAGT
CAACATCTCCTTCGACAGCCGCGCAAAAAATCTTAAACAGAGGAGTACGCCAGGCCCTCATGCCAAC
CCTAGAAGCACTGTATCGACAGGACCCAGAGTCATTACCTTTCGGCAGCCTGTAGATCCCAGCTCCTC
GGAATTCAGACTATTTTGACATCGTAAAGAATCCCATGGACCTCTCCACCATCAAGCGGAAGCTGGACA
CAGGGCAATACCAAGAGCCCTGGCAGTACGTGGACGACGCTGGCTCATGTTCAACAATGCCTGGCTCTA
TAATCGCAAGACATCCCAGTCTATAAGTTTTGCAGTAAGCTTGCAGAGGCTTTTGAGCAGGAAATTGAC
CCTGTCATGCAGTCCCTGGATATTGCTGTGGACGCAAGTATGAGTTTTCCACAGACTTTGTGCTGCT
ATGGGAAGCAGCTGTGTACCATTCTCGGATGCTGCCTACTACAGCTATCAGAAATAGGTATCATTCTG
TGAGAAGTGTTCACAGAGATCCAGGGCGAGAATGTGACCCTGGGTGACGACCCTTACAGCCCCAGACG
ACAATTTCAAAGGATCAGTTTGAAGAAGAAGAAAAATGATACCTTAGACCCCGAACCTTTCGTTGATTGCA
AGGAGTGTGGCCGGAAGATGCATCAGATTTGCGTTCTGCACTATGACATCATTGGCCTTCAGGTTTTGT
GTGCGACAACCTGCTTGAAGAAAACCTGGCAGACCTCGAAAAGAAAACAAATTCAGTGCTAAGAGGCTGCAG
ACCACAAGACTGGGAAACCACTTGAAGACCGAGTGAACAAATTTTTGCGGCGCCAGAATCACCTGAAG
CCGGGGAGGTTTTGTCCGAGTGGTGGCCAGCTCAGACAAGACGGTGGAGGTCAAGCCCGGATGAAGTCA
ACGTTTTGTGGATTCTGGGAAATGTCTGAATCTTCCCATATCGAACCAAGCTCTGTTTGGCTTTGAG
GAAATGACGGCGTGGATGTCTGCTTTTTTGAATGCACGTCGAAGAATACGGCTCTGATTGCCCCCTC
CAAACACGAGGCGTGTGTACATTTCTTATCTGGATAGTATTTCATTTCTTCCGGCCACGTTGCCTCCGCAC
AGCCGTTTACCATGAGATCCTTATTGGATATTTAGAGTATGTGAAGAAATTAGGGTATGTGACAGGGCAC
ATCTGGGCTGTCTCCAAGTGAAGGAGATGATTACATCTTCCATTGCCACCCACCTGATCAAAAAATAC
CCAAGCCAAAACGACTGCAGGAGTGGTACAAAAAGATGCTGGACAAGGCGTTTGCAGAGCGGATCATCCA
TGACTACAAGGATATTTCAAACAAGCAACTGAAGACAGGCTCACCAGTGCCAAGGAACTGCCATTTTT
GAAGGTGATTTCTGGCCCAATGTGTTAGAAGAGAGCATTAAAGAACTAGAACAAGAAGAAGAGGAGAGGA
AAAAGGAAGAGAGCACTGCAGCCAGTGAACCCTGAGGGCAGTCAAGGGCAGCAGCAAGAATGCCAAGAA
GAAGAACAACAAGAAAACCAACAAGAACAAGCAGCATCAGCCGCGCAACAAGAAGAAGCCAGCATG
CCCAACGTGTCCAATGACCTGTCCAGAAAGCTGTATGCCACCATGGAGAAGCACAAGGAGGTCTTCTTCG
TGATCCACCTGCACGCTGGGCTGTATCAACACCCTGCCCCCATCGTCGACCCCGACCCCTGTCTCAG
CTGTGACCTCATGGATGGGCGGACGCCTTCTCACCCCTGCCAGAGACAAGCACTGGGAGTTCTCCTCC
TTGCGCCGCTCCAAGTGGTCCACGCTCTGCATGCTGGTGGAGCTGCACACCCAGGGCCAGGACCGCTTG

TCTACACCTGCAACGAGTGCAAGCACCACGTGGAGACGCGCTGGCACTGCACTGTGTGCGAGGACTACGA
 CCTCTGCATCAACTGCTATAACACGAAGAGCCATGCCATAAGATGGTGAAGTGGGGGCTGGGCCTGGAT
 GACGAGGGCAGCAGCCAGGGCGAGCCACAGTCAAAGAGCCCCAGGAGTACGCCGGGTGAGCATCCAGC
 GCTGCATCCAGTCGCTGGTGCACGCGTGCCAGTGCCGCAACGCCAACTGCTCGTGCCATCCTGCCAGAA
 GATGAAGCGGGTGGTGCAGCACCAAGGGCTGCAAACGCAAGACCAACGGGGCTGCCCGGTGTGCAAG
 CAGTTCATCGCCCTCTGCTGTACCACGCCAAGCACTGCCAAGAAAACAAATGCCCGTGCCTTTTGCC
 TCAACATCAAACACAAGCTCCGCCAGCAGCAGATCCAGCACCCGCTGCAGCAGGCCAGCTCATGCCGCC
 GCGGATGGCCACCATGAACACCCGCAACGTGCCTCAGCAGAGTCTGCCTTCTCCTACCTCAGCACCGCC
 GGGACCCCCACACAGCAGCCAGCACACCCAGACGCGCGAGCCCTGCCAGCCCAACCCTCACCCG
 TGAGCATGTACCAGCTGGCTTCCCCAGCGTGGCCGGACTCAGCCCCCACCACGGTGTCCACAGGGAA
 GCCTACCAGCCAGGTGCCGGCCCCCACCCCGGCCAGCCCCCTCTGCAGCGGTGGAAGCGGCTCGG
 CAGATCGAGCGTGAGGCCAGCAGCAGCAGCACCTGTACCGGGTGAACATCAACAACAGCATGCCCCAG
 GACGCACGGGCATGGGGACCCGGGGAGCCAGATGGCCCCGTGAGCCTGAATGTCCCCGACCCAAACCA
 GGTGAGCGGGCCCGTCATGCCAGCATGCCTCCGGGCGAGTGGCAGCAGGCGCCCTTCCCAGCAGCAG
 CCCATGCCAGGCTTGCCAGGCCTGTGATATCCATGCAGGCCAGCGGGCGTGGCTGGGCCCGGATGC
 CCAGCGTGCAGCCACCCAGGAGCATCTCACCAGCGCTCTGCAAGACCTGCTGCGGACCCTGAAGTCGCC
 CAGCTCCCTCAGCAGCAACAGCAGGTGCTGAACATTCTCAAATCAAACCCGAGCTAATGGCAGCTTTC
 ATCAAACAGCGCACAGCCAAGTACGTGGCCAATCAGCCCGGCATGCAGCCCAGCCTGGCCTCCAGTCCC
 AGCCCGGCATGCAACCCAGCCTGGCATGCACCAGCAGCCAGCCTGCAGAACCTGAATGCCATGCAGGC
 TGGCGTGCCCGGGCCCGGTGTGCCTCCACAGCAGCAGGCGATGGGAGGCCTGAACCCCAAGGCCAGGCC
 TTGAACATCATGAACCCAGGACACAACCCCAACATGGCGAGTATGAATCCACAGTACCGAGAAATGTTAC
 GGAGGCAGCTGCTGCAGCAGCAGCAGCAACAGCAGCAGCAACAACAGCAGCAACAGCAGCAGCAGCAAGG
 GAGTGCCGGCATGGCTGGGGGCATGGCGGGCACGGCCAGTTCAGCAGCCTCAAGGACCCGGAGGCTAC
 CCACCGGCATGCAGCAGCAGCAGCGCATGCAGCAGCATCTCCCTCCAGGGCAGCTCCATGGGCCAGA
 TGGCGGCTCAGATGGGACAGTTGGCCAGATGGGGCAGCCGGGGCTGGGGCAGACAGCACCCCAACAT
 CCAGCAAGCCCTGCAGCAGCGGATTCTGCAGCAACAGCAGATGAAGCAGCAGATTGGTCCCCAGGCCAG
 CCGAACCCCATGAGCCCCAGCAACACATGCTCTCAGGACAGCCACAGGCCTCGCATCTCCTGGCCAGC
 AGATCGCCACGTCCCTTAGTAACCAGGTGCGGTCTCCAGCCCTGTCCAGTCTCCACGGCCCCAGTCCCA
 GCCTCCACATTCAGCCCGTCACCACGGATACAGCCCCAGCCTTCGCCACACCACGTCTCACCCAGACT
 GGTCCCCCACCCTGGACTCGCAGTACCATGGCCAGTCCATAGATCAGGGACACTTGGGGAACCCCG
 AACAGAGTGCAATGCTCCCCAGCTGAACACCCAGCAGGAGTGCCTGTCCAGCGAAGTCCCTGGT
 CGGGGACACCACGGGGACAGCTAGAGAAGTTTGTGGAGGGCTTG

ACGGGCCGCTCGAG - GFP Tag - GTTTAA

Protein Sequence: >RG219036 representing NM_004380
 Red=Cloning site Green=Tags(s)

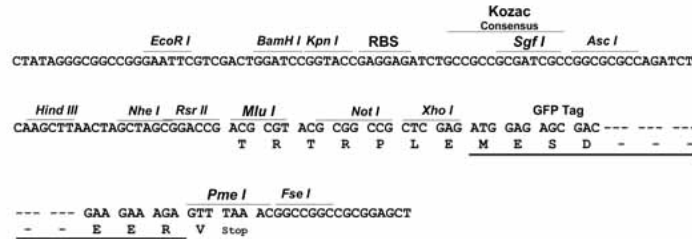
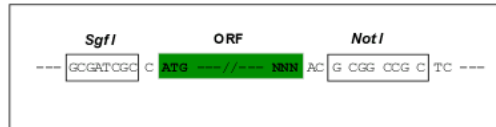
MAENLLDGPNNPKRAKLSSPGFSANDSTDFGSLFDLENDLPDELIPNGGELGLLNSGNLVPDAASKHKQL
 SELLRGGSGSSINPGIGNVSASSPVQQGLGGQAQGGQPNANMASL SAMGKSPLSQGDSSAPSLPKQAAS
 SGPTPAASQALNPQAQKQVGLATSSPATSTGPGICMNNANFNQTHPGLLNSNSGHSLINQASQGGQAQVMN
 GSLGAAGRGRGAGMPYPTPAMQGASSVLAETLTQVSPQMTGHAGLNTAQAGGMAMGKITGNTSPFGQPF
 SQAGGQPMGATGVNPQLASKQSMVNSLPTFPTDIKNTSVTNVPMNSQMOTSVGIVPTQAIATGPTADPEK
 RKLIIQQQLVLLHHAHKCQRREQANGEVRACSLPHCRTMKNVNLNMTHTCQAGKACQVAHCASSRQIISHWK
 NCTRHDCPVCLPLKNASDKRNQQTILGSPASGIQNTIGSVGTGQQNATSLSNPNPIDPSSMQRAYAALGL
 PYMNQPQTQLQPQVPGQQAQPQTHQQMRTLNLGNNPMNIPAGGITTDQPPNLI SESALPTSLGATNP
 LMNDGSNSGNIGTLSTIPTAAPPSTGVRKGWHEHVTQDLRSHLVHKL VQAI FPTPDPAALKDRRMENLV
 AYAKKVEGDMYESANSRDEYYHLLAEKIYKIQKELEEKRRSRLHKQGILGNQPALPAPGAQPPVIPQAQP
 VRPPNGPLSLPVNRMQVSGMNSFNPMQLGNVQLPQAPMGPRASPMNHSVQMNSMGSVPGMAISPSRMP
 QPPNMMGAHTNNMAQAPAQSQFLPQNQFPSSSGAMSVGMGQPPAQTGVSQGVPGAALPNLNLMLGPQA
 SQLPCPPVTQSPLHPTPPASTAAGMPSLQHTTTPPGMTPPQPAAPTQPSTPVSSSQTPPTPGSVSAT
 QTQSTPTVQAAAQAVTPQPQTPVQPPSVATPQSSQQQTPVHAQPPGTPLSQAASIDNRVTPSSVAS
 AETNSQQPGPDVPLEMKTETQAEDTEPDGEGESKGEPRSEMMEEDLQGASQVKEETDIAEQSEPMEVDE
 KKPEVKEVEKEEEEESSNGTASQSTSPSQPRKIFKPEELRQALMPTLEALYRQDPESLFRQPVDPQLL
 GIPDYFDIVKNPMDLSTIKRKLDTGQYQEPWQYVDDVWLMFNNAWLYNRKTSRVYKFCSLAEVFEQEID
 PVMQSLGYCCGRKYEFSPQTLCCYQKQLCTIPRDAAYSYQNRHYFCEKCFTEIQGENVLGDDPSQPQT
 TISKDQFEKKNNDTLDPEPFVDCKECGRKMHQICVLHYDI IWPVSGFVCDNCLKKTRPRKENKFSAKRLQ
 TTRLGNHLEDRVNFLLRRQNHPEAGEVFRVVASSDKTVEVKPGMKSRLFVDSGEMSESFYRTKALFAFE
 EIDGVDVCFFGMHVQEYGSDCPPNTRRYYISYLDSEIHFPRPRCLRTAVYHEILIGYLEYVKKLGYVTGH
 IWACPPSEGGDYIFHCHPPDQKIPKPKRLQEYWKMLDKAFAERI IHDYKDIKQATEDRLTSAKELPYF
 EGDVFNWVLEESIKELEQEEERKKEESTAASETTEGSQGDSKNAKKNKNTKNKSSISRANKKPSM
 PNVSNDSLQKLYATMEKHKEVFFVIHLHAGPVINTLPPIVDPDLLSCDLMGDRDAFLTLARDKHWEFSS
 LRRSKWSTLCMLVELHTQGQDRFVYTCNECKHHVETRWHTVCEYDLCINCYNTKSHAHKMVKWGLGLD
 DEGSSQGEQSKSPQESRRVSIQRCIQSLVHACQCRNANCSLPSQKMKRVVQHTKGCKRKTNGGCPVCK
 QLIALCCYHAKHCQENKCPVPFLNIKHKL RQQIQHRLQQAQLMRRMATMNTNVPQQSLPSPTSAPP
 GTPTQQPSTPQTQPPAQPQPSVMSPAQFSPVARTQPPTTVSTGKPTSQVPAPPPPAQPPAAVEAAR
 QIEREAQQQHL YRVNINNSMPPGRTGMGTGPGSMAVSLNVPRPNQVSGPVMPMPGQWQQAPLQQQ
 PMPGLPRPVI SMQAQAAVAGPRMPSVQPPRSISPSALQDLLRTLKSPSSPQQQQVNLILKSNPQLMAAF
 IKQRTAKYVANQPGMQPQPLQSQPGMQPQPMHQQPSLQNLNAMQAGVPRPGVPPQQQAMGGLNPQGQA
 LNIMNPGHNPNMASMNQYREMLRRQLLQQQQQQQQQQQQQQQGSAGMAGGMAGHGQFQQPGGGY
 PPAMQQQRMQQHLPLQGSMMQMAAQMGQLGQMGQPLGADSTPNIQQALQQRILQQQQMKQQIGSPGQ
 PNPMSPPQHMLSGQPQASHLPQQIATSLSNQVRSPAPVQSPRPQSPPHSSPSRIQPQSPHHVSPQT
 GSPHPGLAVTMASSIDQGH LGNPEQSAMPLQLNTPSRSALSSEL SLVGDTTGDTLEKFFVEGL

TRPLE - GFP Tag - V

Restriction Sites: SgfI-NotI

Cloning Scheme:

Cloning sites used for ORF Shutting:


ACCN: NM_004380

ORF Size: 7326 bp

OTI Disclaimer: Due to the inherent nature of this plasmid, standard methods to replicate additional amounts of DNA in E. coli are highly likely to result in mutations and/or rearrangements. Therefore, OriGene does not guarantee the capability to replicate this plasmid DNA. Additional amounts of DNA can be purchased from OriGene with batch-specific, full-sequence verification at a reduced cost. Please contact our customer care team at custsupport@origene.com or by calling 301.340.3188 option 3 for pricing and delivery.

The molecular sequence of this clone aligns with the gene accession number as a point of reference only. However, individual transcript sequences of the same gene can differ through naturally occurring variations (e.g. polymorphisms), each with its own valid existence. This clone is substantially in agreement with the reference, but a complete review of all prevailing variants is recommended prior to use. [More info](#)

OTI Annotation: This clone was engineered to express the complete ORF with an expression tag. Expression varies depending on the nature of the gene.

Components: The ORF clone is ion-exchange column purified and shipped in a 2D barcoded Matrix tube containing 10ug of transfection-ready, dried plasmid DNA (reconstitute with 100 ul of water).

- Reconstitution Method:**
1. Centrifuge at 5,000xg for 5min.
 2. Carefully open the tube and add 100ul of sterile water to dissolve the DNA.
 3. Close the tube and incubate for 10 minutes at room temperature.
 4. Briefly vortex the tube and then do a quick spin (less than 5000xg) to concentrate the liquid at the bottom.
 5. Store the suspended plasmid at -20°C. The DNA is stable for at least one year from date of shipping when stored at -20°C.

RefSeq: [NM_004380.1, NP_004371.1](#)

RefSeq Size: 8694 bp

RefSeq ORF: 7329 bp

Locus ID: 1387

UniProt ID: [Q92793](#)

Cytogenetics: 16p13.3

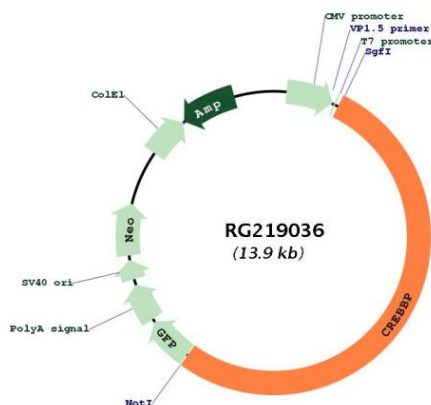
Domains: zf-TAZ, ZnF_ZZ, BROMO, KIX

Protein Families: Druggable Genome

Protein Pathways: Adherens junction, Cell cycle, Huntington's disease, Jak-STAT signaling pathway, Long-term potentiation, Melanogenesis, Notch signaling pathway, Pathways in cancer, Prostate cancer, Renal cell carcinoma, TGF-beta signaling pathway, Wnt signaling pathway

Gene Summary: This gene is ubiquitously expressed and is involved in the transcriptional coactivation of many different transcription factors. First isolated as a nuclear protein that binds to cAMP-response element binding protein (CREB), this gene is now known to play critical roles in embryonic development, growth control, and homeostasis by coupling chromatin remodeling to transcription factor recognition. The protein encoded by this gene has intrinsic histone acetyltransferase activity and also acts as a scaffold to stabilize additional protein interactions with the transcription complex. This protein acetylates both histone and non-histone proteins. This protein shares regions of very high sequence similarity with protein p300 in its bromodomain, cysteine-histidine-rich regions, and histone acetyltransferase domain. Mutations in this gene cause Rubinstein-Taybi syndrome (RTS). Chromosomal translocations involving this gene have been associated with acute myeloid leukemia. Alternative splicing results in multiple transcript variants encoding different isoforms. [provided by RefSeq, Feb 2009]

Product images:



Circular map for RG219036