

## Product datasheet for **RG219033**

### TFPI (NM\_006287) Human Tagged ORF Clone

#### Product data:

Product Type:	Expression Plasmids
Product Name:	TFPI (NM_006287) Human Tagged ORF Clone
Tag:	TurboGFP
Symbol:	TFPI
Synonyms:	EPI; LACI; TFI; TFPI1
Mammalian Cell Selection:	Neomycin
Vector:	pCMV6-AC-GFP (PS100010)
E. coli Selection:	Ampicillin (100 ug/mL)
ORF Nucleotide Sequence:	>RG219033 representing NM_006287 Red=Cloning site Blue=ORF Green=Tags(s)

TTTTGTAATACGACTCACTATAGGGCGGCCGGAATTCGTCGACTGGATCCGGTACCGAGGAGATCTGCC  
GCC**CGATCGCC**

ATGATTTACACAATGAAGAAAGTACATGCACTTTGGGCTTCTGTATGCCTGCTGCTTAATCTTGCCCTG  
CCCCTCTAATGCTGATTCTGAGGAAGATGAAGAACACACAATTATCACAGATACGGAGTTGCCACCACT  
GAACTTATGCATTCATTTGTGCATTCAAGGCGGATGATGGCCCATGAAAGCAATCATGAAAAGATT  
TTCTTCAATATTTCACTCGACAGTGCGAAGAATTTATATATGGGGATGTGAAGGAAATCAGAATCGAT  
TTGAAAGTCTGGAAGAGTGCAAAAAATGTGTACAAGAGATAATGCAAACAGGATTATAAAGACAACATT  
GCAACAAGAAAAGCCAGATTTCTGCTTTTTGGAAGAAGATCCTGGAATATGTCGAGGTTATATTACCAGG  
TATTTTTATAACAATCAGACAAAACAGTGTGAACGTTTCAAGTATGGTGGATGCCTGGGCAATATGAACA  
ATTTTGAGACACTGGAAGAATGCAAGAACATTTGTGAAGATGGTCCGAATGGTTTCCAGGTGGATAATTA  
TGGAAACCAGCTCAATGCTGTGAATAACTCCCTGACTCCGCAATCAACCAAGGTTCCAGCTTTTTGAA  
TTTCACGGTCCCTCATGGTGTCTCACTCCAGCAGACAGAGGATTTGTGTCGTGCCAATGAGAACAGATTCT  
ACTACAATTCAGTCATTGGGAAATGCCGCCATTTAAGTACAGTGGATGTGGGGAAATGAAAACAATTT  
TACTTCCAAAACAAGAATGTCTGAGGGCATGTAAAAAGGTTTCATCCAAGAATATCAAAAGGAGGCCTA  
ATTAACCAAAAAGAAAAGAAAAGCAAGCAGAGAGTGAAAATAGCATATGAAGAAATTTTGTAAAAATA  
TG

**ACGCGT**ACGCGGCCGCTCGAG - GFP Tag - GTTTAA



[View online »](#)

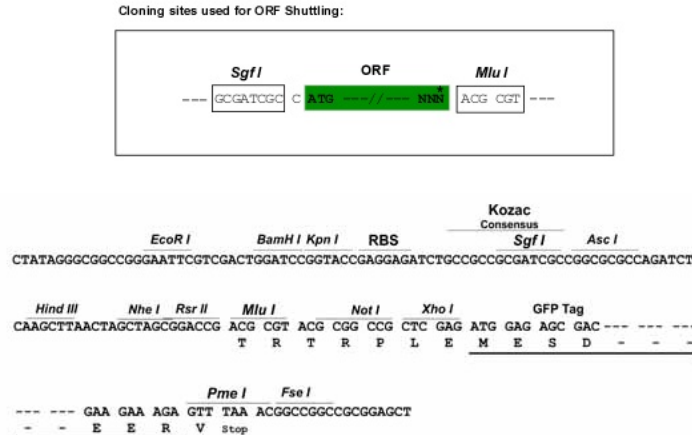
**Protein Sequence:** >RG219033 representing NM\_006287  
Red=Cloning site Green=Tags(s)

MIYTMKKVHALWASVCLLLNLAPLADSEDEEHTIITDELPLPLKLMHSFCAFKADDGPCKAIMKRF  
 FFNIFTRQCEEF IYGGCEGNQRFESLEECKMCTRDNANRI IKTTLQQEKPDFCFLEEDPGICRGYITR  
 YFYNNQTKQCERFKYGGCLGNMNNFETLEECKNICEDGPNGFQVDNYGTQLNAVNNSLTPQSTKVP  
 SLFE FHGSPWCLTPADRGLCRANENRFYNSVIGKCRPFKYSGCGNENNF TSKQECLRACKKGF  
 IQRISKGGL IKTKRKRKKQRVKIAYEEIFVKNM

TRTRPLE - GFP Tag - V

**Restriction Sites:** SgfI-MluI

**Cloning Scheme:**



**ACCN:** NM\_006287

**ORF Size:** 912 bp

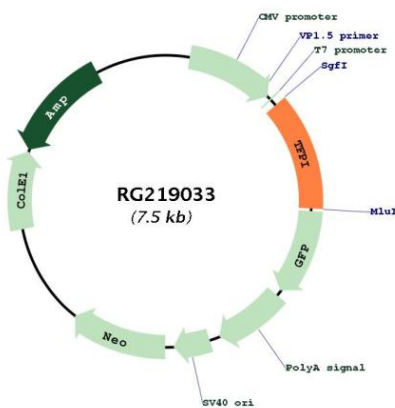
**OTI Disclaimer:** The molecular sequence of this clone aligns with the gene accession number as a point of reference only. However, individual transcript sequences of the same gene can differ through naturally occurring variations (e.g. polymorphisms), each with its own valid existence. This clone is substantially in agreement with the reference, but a complete review of all prevailing variants is recommended prior to use. [More info](#)

**OTI Annotation:** This clone was engineered to express the complete ORF with an expression tag. Expression varies depending on the nature of the gene.

**Components:** The ORF clone is ion-exchange column purified and shipped in a 2D barcoded Matrix tube containing 10ug of transfection-ready, dried plasmid DNA (reconstitute with 100 ul of water).

<b>Reconstitution Method:</b>	<ol style="list-style-type: none"><li>1. Centrifuge at 5,000xg for 5min.</li><li>2. Carefully open the tube and add 100ul of sterile water to dissolve the DNA.</li><li>3. Close the tube and incubate for 10 minutes at room temperature.</li><li>4. Briefly vortex the tube and then do a quick spin (less than 5000xg) to concentrate the liquid at the bottom.</li><li>5. Store the suspended plasmid at -20°C. The DNA is stable for at least one year from date of shipping when stored at -20°C.</li></ol>
<b>RefSeq:</b>	<a href="#">NM_006287.6</a>
<b>RefSeq Size:</b>	1431 bp
<b>RefSeq ORF:</b>	915 bp
<b>Locus ID:</b>	7035
<b>UniProt ID:</b>	<a href="#">P10646</a>
<b>Cytogenetics:</b>	2q32.1
<b>Domains:</b>	KU
<b>Protein Families:</b>	Secreted Protein
<b>Protein Pathways:</b>	Complement and coagulation cascades
<b>Gene Summary:</b>	This gene encodes a Kunitz-type serine protease inhibitor that regulates the tissue factor (TF)-dependent pathway of blood coagulation. The coagulation process initiates with the formation of a factor VIIa-TF complex, which proteolytically activates additional proteases (factors IX and X) and ultimately leads to the formation of a fibrin clot. The product of this gene inhibits the activated factor X and VIIa-TF proteases in an autoregulatory loop. Inhibition of the encoded protein restores hemostasis in animal models of hemophilia. This gene encodes multiple protein isoforms that differ in their inhibitory activity, specificity and cellular localization. [provided by RefSeq, Jul 2016]

## Product images:



Circular map for RG219033